

Boletín N° : 334
Mes : Febrero
Año : 2006

DE : JAVIER NARBONA NARANJO
ING. JEFE DEPARTAMENTO DE HIDROLOGIA

*INFORMACION PLUVIOMETRICA, FLUVIOMETRICA,
ESTADO DE EMBALSES Y AGUAS SUBTERRANEAS*

Contenido :

- 1.- Informe pluviométrico
- 2.- Volúmenes de embalses
- 3.- Informe fluviométrico
- 4.- Informe aguas subterráneas

En Internet (www.dga.cl) se publica: .

- Los informes de este boletín
- Caudales en tiempo real

NOTA: Datos provisorios sujetos a modificaciones posteriores

INFORME PLUVIOMETRICO NACIONAL N°02

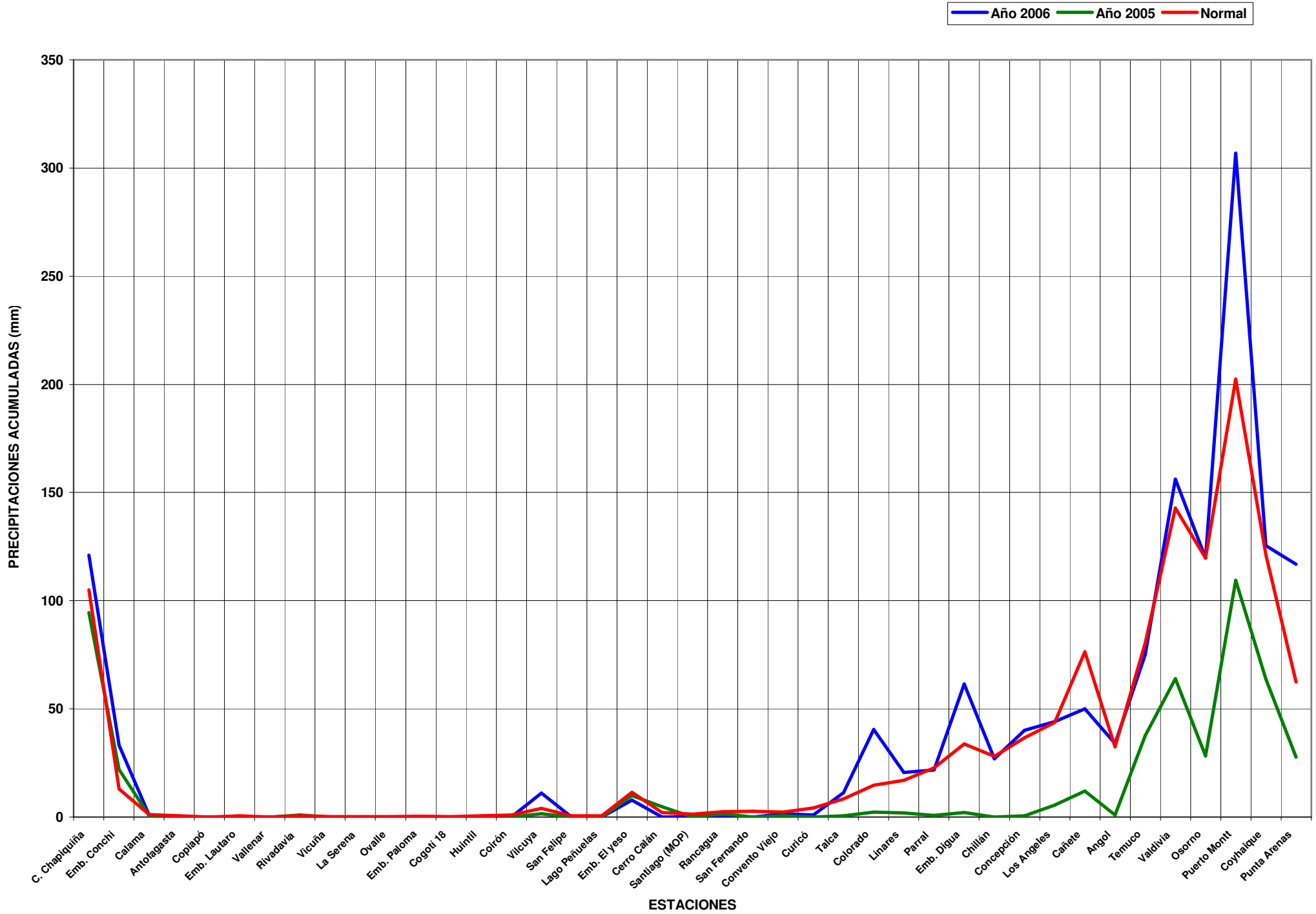
ESTACIONES	FEBRERO	TOTALES AL 28 DE FEBRERO			EXCESO O DÉFICIT (%)
		2006 (mm)	2005 (mm)	PROMEDIO (mm)	
CENTRAL CHAPIQUIÑA	95.0	121.0	94.5	105.0	15
EMBALSE CONCHI	24.2	33.2	22.0	13.0*	156
CALAMA	0.5	0.7	0.5	1.2	- 40
ANTOFAGASTA	0.0	0.0	0.0	0.5	-100
COPIAPÓ	0.0	0.0	0.0	0.0	-100
EMBALSE LAUTARO	0.0	0.0	0.0	0.6	-100
VALLENAR	0.0	0.0	0.0	0.0	0
RIVADAVIA	0.0	0.0	1.0	0.6	-100
VICUÑA	0.0	0.0	0.0	0.1	-100
LA SERENA	0.0	0.0	0.0	0.1	-100
OVALLE	0.0	0.0	0.0	0.1	-100
EMBALSE PALOMA	0.0	0.0	0.0	0.3	-100
COGOTÍ 18	0.0	0.0	0.0	0.1	-100
HUINTIL	0.0	0.0	0.0	0.7	-100
COIRÓN	0.0	0.0	0.0	1.0	-100
VILCUYA	11.0	110	1.5	4.0	178
SAN FELIPE	0.0	0.0	0.0	0.5	-100
LAGO PEÑUELAS	0.0	0.0	0.0	0.7	-100
EMBALSE EL YESO	0.5	7.8	10.0	11.5	- 32
CERRO CALAN	0.0	0.0	4.8	2.2	-100
SANTIAGO (MOP)	0.1	0.1	0.0	1.4	- 90
RANCAGUA	0.0	0.0	1.5	2.4	-100
SAN FERNANDO	0.0	0.0	0.0	2.6	-100
CONVENTO VIEJO	1.5	1.5	0.5	2.3	- 34
CURICO	1.0	1.0	0.0	4.2	- 76
TALCA	3.8	11.3	0.5	8.3	35
COLORADO	8.0	40.5	2.2	14.8	174
LINARES	9.0	20.7	1.9	17.0	22
PARRAL	2.8	21.8	0.8	22.8	- 4
EMBALSE DIGUA	14.3	61.5	2.1	33.8	82
CHILLÁN	3.0	27.0	0.0	28.0	- 4
CONCEPCIÓN	1.0	40.1	0.6	36.6	10
LOS ÁNGELES	11.1	44.1	5.5	43.6	1
CAÑETE	4.0	50.0	12.0	76.3	- 35
ANGOL	2.5	34.0	1.0	32.5	4
TEMUCO	21.0	75.1	37.7	80.5	- 7
VALDIVIA	22.3	156.2	63.9	142.8	9
OSORNO	15.3	119.7	28.2	119.8	0
PUERTO MONTT	92.9	306.8	109.5	202.4	52
COYHAIQUE	35.5	125.5	63.7	121.3*	3
PUNTA ARENAS	27.4	116.8	27.6	62.5	87

Promedios acumulados para el período 1961-1990 (D.G.A)

* : Promedios calculados para períodos inferiores a 30 años

Valores expresados en milímetros (1 mm = 1 lt x m2)

TOTALES DE LLUVIA HASTA EL 28 de Febrero del 2006



ESTADO DE EMBALSES

Ultimo día del mes
(Volúmenes en mill-m³)

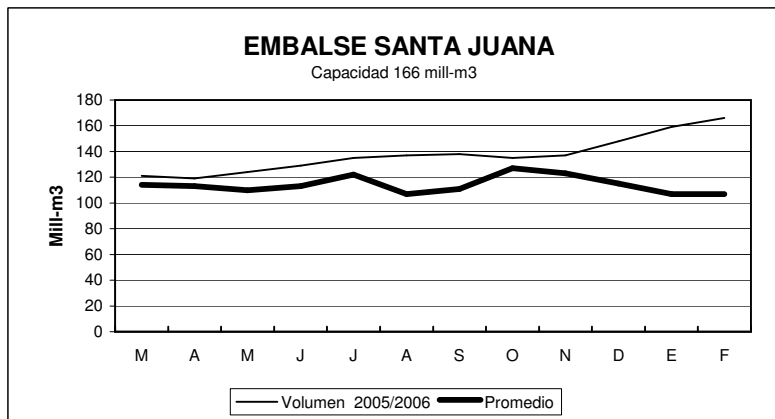
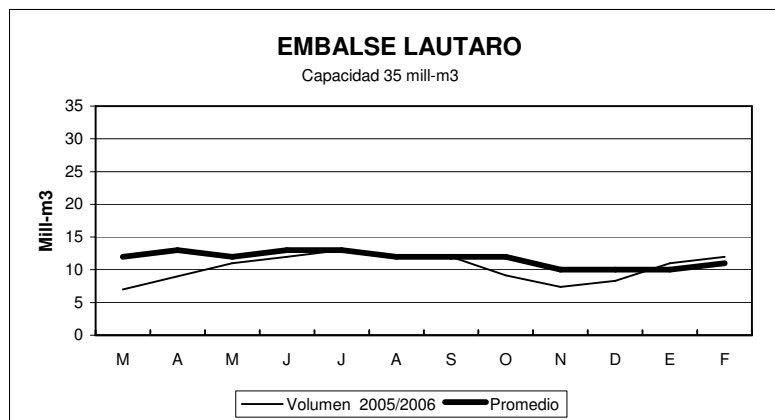
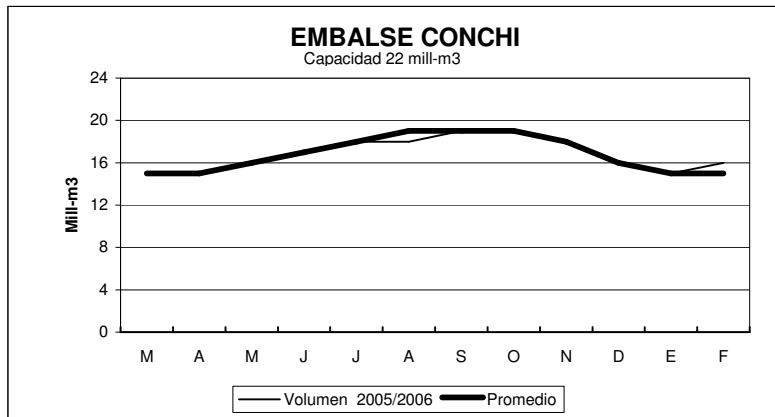
EMBALSE	REGION	CUENCA	CAPACIDAD	PROMEDIO	Febrero	
				HISTORICO MENSUAL	2006	2005
Conchi	II	Loa	22	15	16	15
Lautaro	III	Copiapó	35	11	12	7
Santa Juana	III	Huasco	166	107	166	125
La Laguna	IV	Elqui	40	23	31	30
Puclaro	IV	Elqui	200	73	200	142
Recoleta	IV	Limarí	100	62	100	72
La Paloma	IV	Limarí	748	402	559	453
Cogotí	IV	Limarí	150	79	92	60
Culimo	IV	Quilimarí	10	3.5	1.2	1.96
Corrales	IV	Illapel	50	35	49	40
Peñuelas	V	Peñuelas	95	23	24	31
El Yeso	RM	Maipo	256	203	246	228
Rungue	RM	Maipo	2.2	0.5	0.6	0.4
Rapel	VI	Rapel	695	614	605	579
Colbún	VII	Maule	1544	1252	1462	1195
Lag. Maule	VII	Maule	1420	991	1134	849
Bullileo	VII	Maule	60	19	24	16
Digua	VII	Maule	220	48	34	28
Tutuvén	VII	Maule	15	3.8	4	4
Coihueco	VIII	Itata	29	13	14	13
Lago Laja (&)	VIII	Bio-Bio	5582	3517	2966	2108

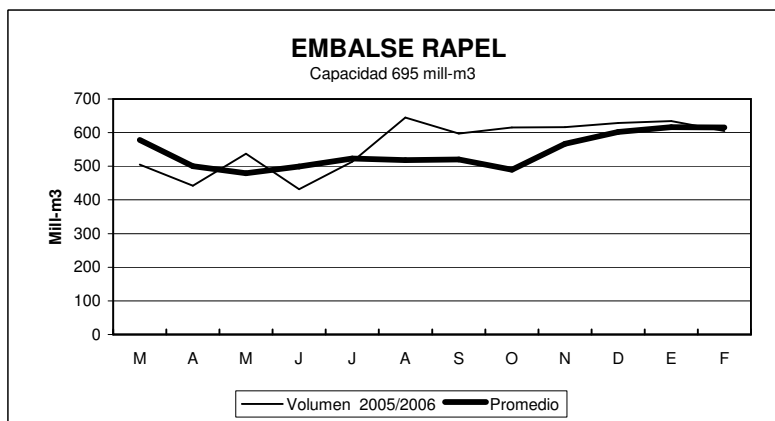
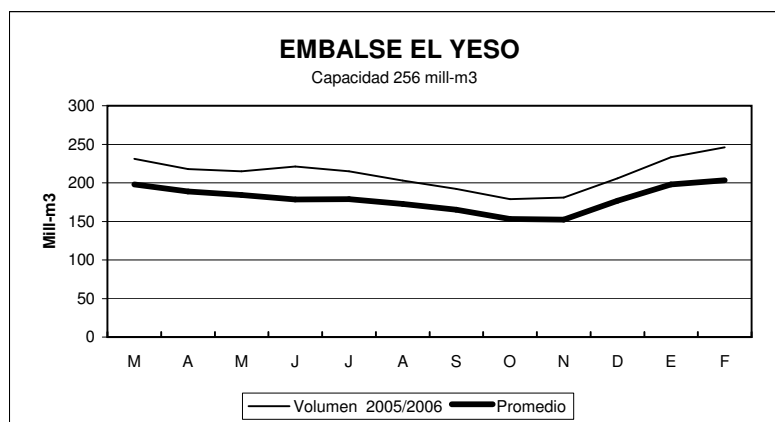
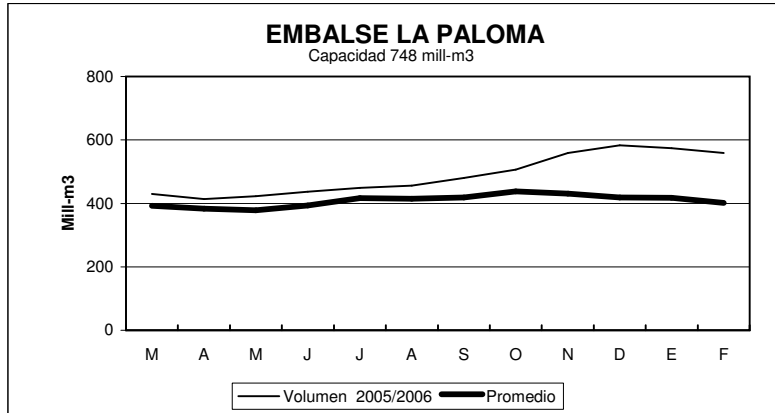
RESUMEN ANUAL

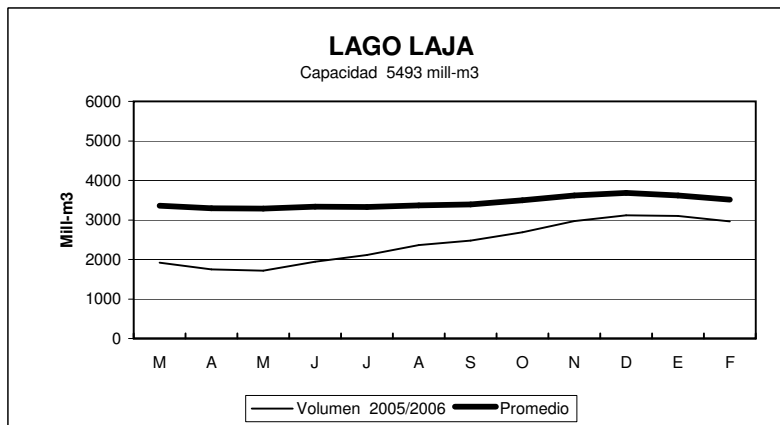
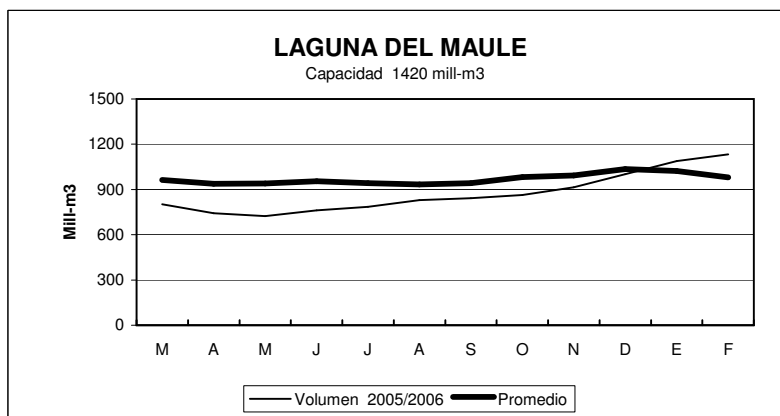
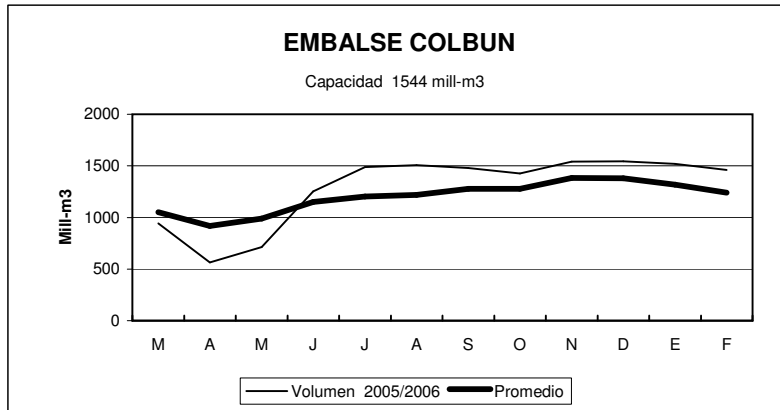
EMBALSE	2005-2006											
	M	A	M	J	J	A	S	O	N	D	E	F
Conchi	15	15	16	17	18	18	19	19	18	16	15	16
Lautaro	7	9	11	12	13	12	12	9	7	8	11	12
Santa Juana	121	119	124	129	135	137	138	135	137	148	159	166
La Laguna	25	26	25	27	29	31	32	36	37	38	36	31
Puclaro	134	128	133	137	140	140	141	142	155	189	200	200
Recoleta	68	65	69	73	75	77	80	81	86	91	91	100
La Paloma	430	414	423	437	449	456	480	506	559	583	574	559
Cogotí	56	53	54	58	61	63	73	80	100	104	98	92
Culimo	0.6	0.0	0.0	0.0	0.0	1.3	3.1	3.7	2.9	2.4	1.9	1.2
Corrales	33	31	31	32	32	37	42	43	44	46	49	49
Peñuelas	29	27	28	29	30	35	35	34	32	29	27	24
El Yeso	231	218	215	221	215	203	192	179	181	206	233	246
Rungue	0.2	0.1	0.1	0.6	1.2	2.0	2.1	2.0	1.9	2.2	1.0	0.6
Rapel	505	442	537	432	514	645	597	615	616	629	634	605
Colbún	942	565	714	1253	1488	1506	1480	1425	1542	1544	1519	1462
Lag. Maule	802	743	723	761	786	829	843	863	914	1001	1088	1134
Bullileo	1.3	0	19	44	60	60	60	60	60	60	49	24
Digua	6.5	4.0	28	105	160	219	220	220	199	220	93	34
Tutuvén	2.1	0	3	15	13	15	13	12	12	15	6.1	4
Coihueco	6	1.4	1.6	13.4	24	28.3	29	29	29	28	22	14
Lago Laja (&)	1923	1748	1716	1943	2110	2365	2480	2690	2970	3119	3104	2966

(&) : Volumen sobre cota 1300 msnm

ESTADO DE EMBALSES



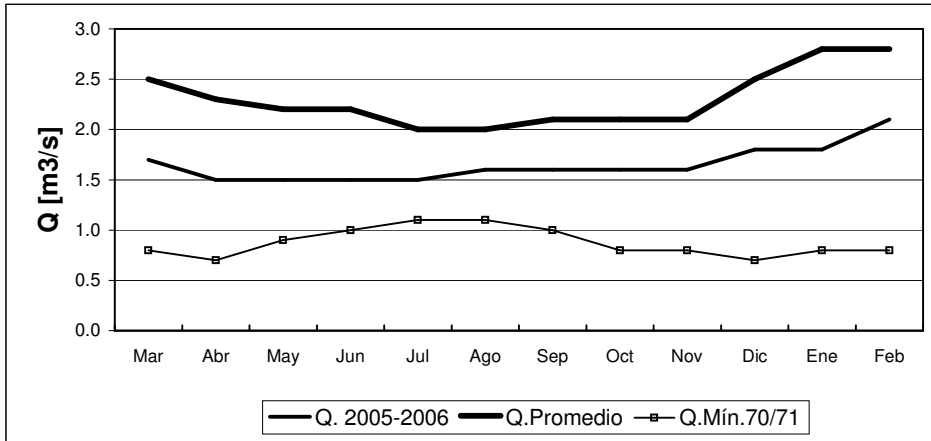




INFORME FLUVIOMETRICO
Caudales medios mensuales en m3/seg

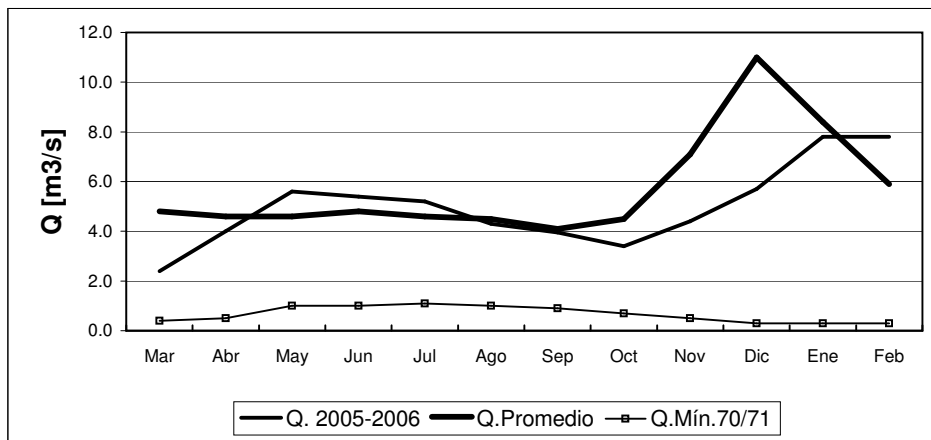
Feb-06

RIO COPIAPO EN LA PUERTA



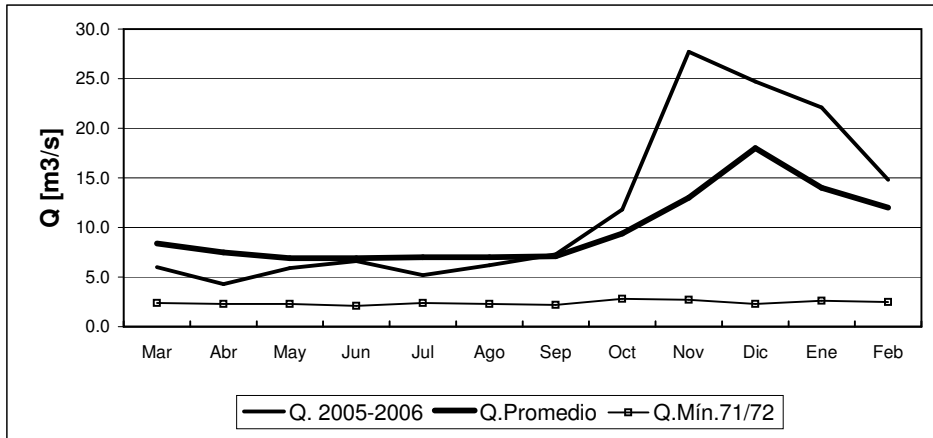
	Mar	Abr	May	Jun	Jul	Ago	Sep	Oct	Nov	Dic	Ene	Feb
Q. 2005-2006	1.7	1.5	1.5	1.5	1.5	1.6	1.6	1.6	1.6	1.8	1.8	2.1
Q. Promedio	2.5	2.3	2.2	2.2	2.0	2.0	2.1	2.1	2.1	2.5	2.8	2.8
Q. Mín.70/71	0.8	0.7	0.9	1.0	1.1	1.1	1.0	0.8	0.8	0.7	0.8	0.8

RIO HUASCO EN ALGODONES



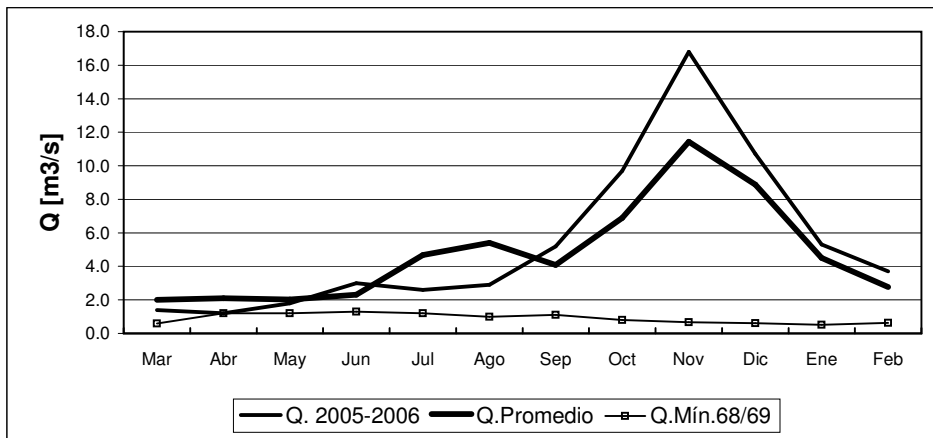
	Mar	Abr	May	Jun	Jul	Ago	Sep	Oct	Nov	Dic	Ene	Feb
Q. 2005-2006	2.4	4.0	5.6	5.4	5.2	4.3	4.0	3.4	4.4	5.7	7.8	7.8
Q. Promedio	4.8	4.6	4.6	4.8	4.6	4.5	4.1	4.5	7.1	11.0	8.4	5.9
Q. Mín.70/71	0.4	0.5	1.0	1.0	1.1	1.0	0.9	0.7	0.5	0.3	0.3	0.3

RIO ELQUI EN ALGARROBAL



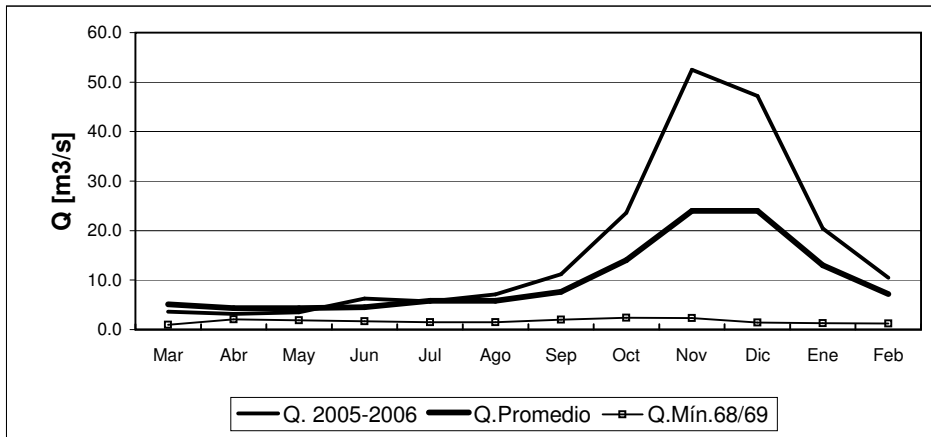
	Mar	Abr	May	Jun	Jul	Ago	Sep	Oct	Nov	Dic	Ene	Feb
Q. 2005-2006	6.0	4.3	5.9	6.6	5.2	6.2	7.3	11.8	27.7	24.7	22.1	14.8
Q. Promedio	8.4	7.5	6.9	6.9	7.0	7.0	7.1	9.4	13.0	18.0	14.0	12.0
Q. Mín. 71/72	2.4	2.3	2.3	2.1	2.4	2.3	2.2	2.8	2.7	2.3	2.6	2.5

RIO GRANDE EN LAS RAMADAS



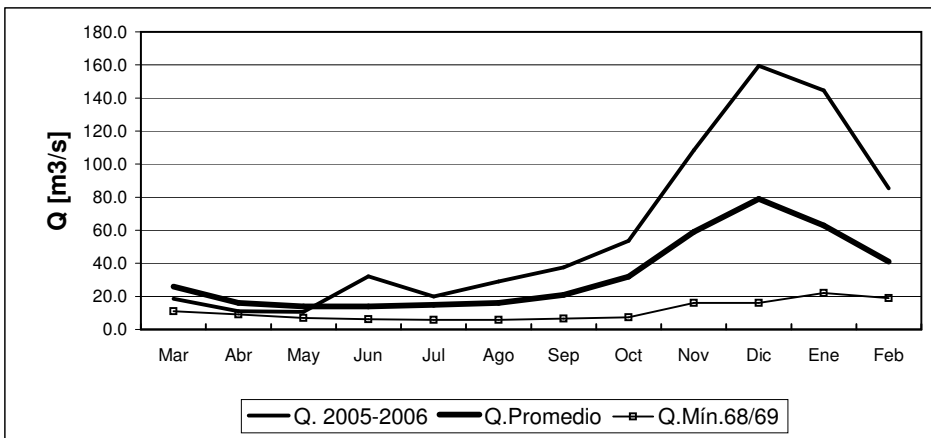
	Mar	Abr	May	Jun	Jul	Ago	Sep	Oct	Nov	Dic	Ene	Feb
Q. 2005-2006	1.4	1.2	1.8	3.0	2.6	2.9	5.2	9.7	16.8	10.7	5.3	3.7
Q. Promedio	2.0	2.1	2.0	2.3	4.7	5.4	4.1	6.9	11.4	8.9	4.5	2.8
Q. Mín. 68/69	0.6	1.2	1.2	1.3	1.2	1.0	1.1	0.8	0.7	0.6	0.5	0.6

RIO CHOAPA EN CUNCUMEN



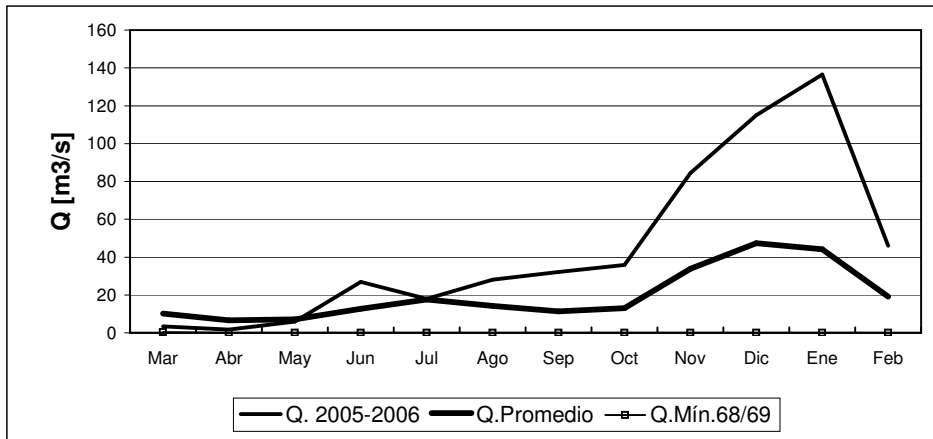
	Mar	Abr	May	Jun	Jul	Ago	Sep	Oct	Nov	Dic	Ene	Feb
Q. 2005-2006	3.6	3.2	3.5	6.3	5.7	7.1	11.2	23.6	52.5	47.2	20.4	10.5
Q.Promedio	5.1	4.3	4.3	4.5	5.8	5.8	7.6	14.0	24.0	24.0	13.0	7.2
Q.Mín.68/69	1.0	2.1	1.9	1.7	1.5	1.5	2.0	2.4	2.3	1.4	1.3	1.2

RIO ACONCAGUA EN CHACABUQUITO



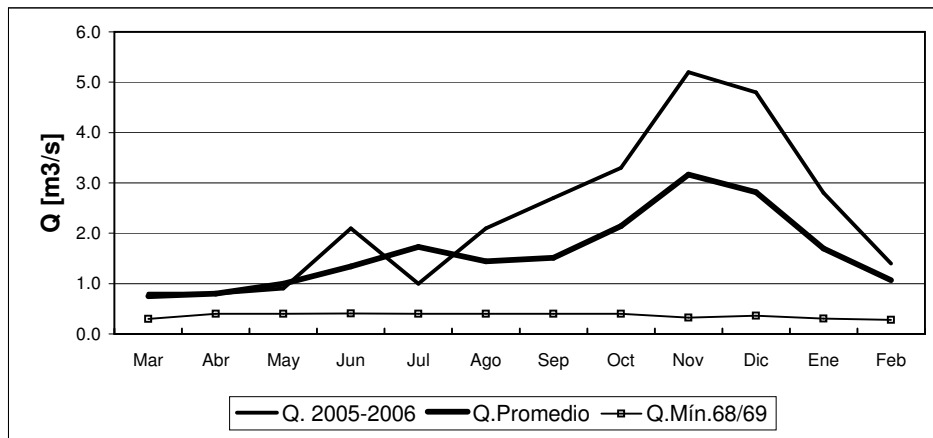
	Mar	Abr	May	Jun	Jul	Ago	Sep	Oct	Nov	Dic	Ene	Feb
Q. 2005-2006	18.5	11.1	10.6	32.2	20.0	29.1	37.5	53.7	108.4	159.5	144.6	85.3
Q.Promedio	26.0	16.0	14.0	14.0	15.0	16.0	21.0	32.0	59.0	79.0	63.0	41.0
Q.Mín.68/69	11.0	9.1	6.9	6.2	5.9	5.9	6.6	7.4	16.0	16.0	22.0	19.0

RIO ACONCAGUA EN SAN FELIPE



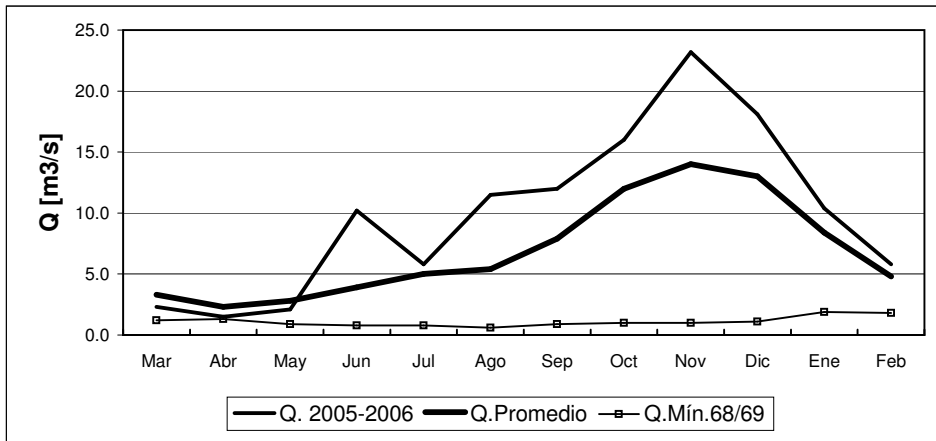
	Mar	Abr	May	Jun	Jul	Ago	Sep	Oct	Nov	Dic	Ene	Feb
Q. 2005-2006	3.4	1.7	6.0	26.9	18.0	28	32.2	35.8	84.4	115.0	136.5	46
Q.Promedio	10.2	6.7	7.1	12.7	17.6	14.2	11.3	13.0	33.8	47.3	44.1	19.1
Q.Mín.68/69	0.3	0.0	0.0	0.0	0.0	0.0	0.0	0.0	0.0	0.0	0.0	0.0

ESTERO ARRAYAN EN LA MONTOSA



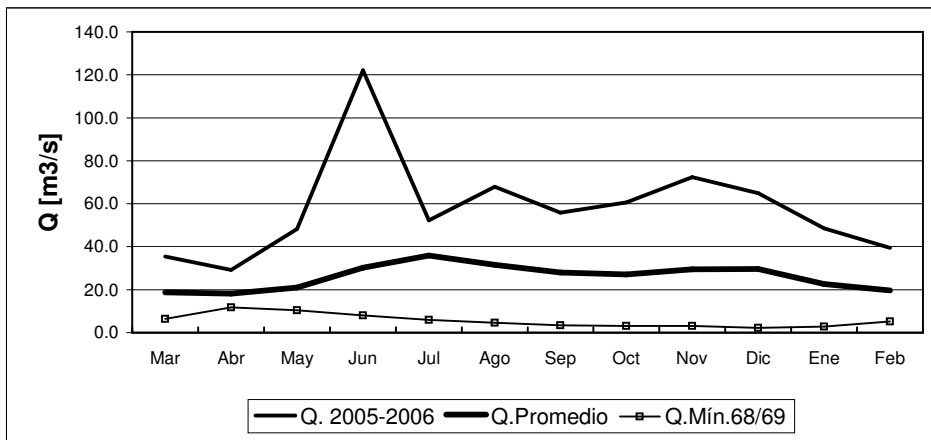
	Mar	Abr	May	Jun	Jul	Ago	Sep	Oct	Nov	Dic	Ene	Feb
Q. 2005-2006	0.8	0.8	0.9	2.1	1.0	2.1	2.7	3.3	5.2	4.8	2.8	1.4
Q.Promedio	0.8	0.8	1.0	1.3	1.7	1.4	1.5	2.1	3.2	2.8	1.7	1.1
Q.Mín.68/69	0.3	0.4	0.4	0.4	0.4	0.4	0.4	0.4	0.3	0.4	0.3	0.3

RIO MAPOCHO EN LOS ALMENDROS



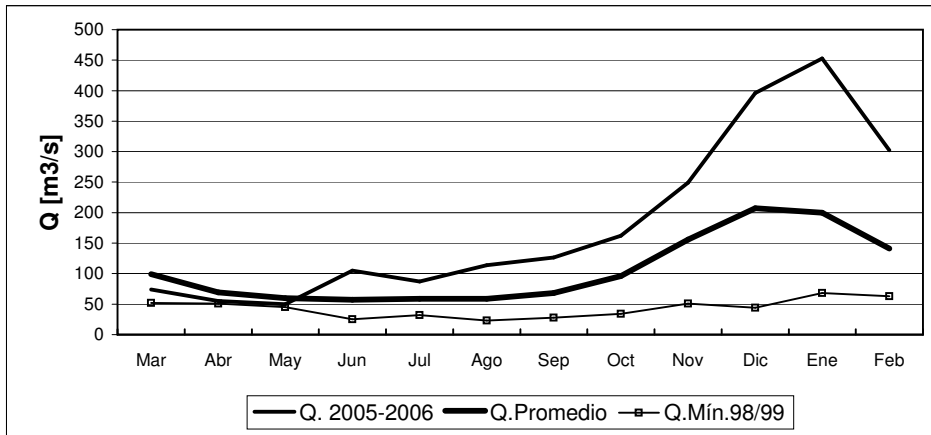
	Mar	Abr	May	Jun	Jul	Ago	Sep	Oct	Nov	Dic	Ene	Feb
Q. 2005-2006	2.3	1.5	2.1	10.2	5.8	11.5	12.0	16.0	23.2	18.1	10.4	5.8
Q.Promedio	3.3	2.3	2.8	3.9	5.0	5.4	7.9	12.0	14.0	13.0	8.4	4.8
Q.Mín.68/69	1.2	1.3	0.9	0.8	0.8	0.6	0.9	1.0	1.0	1.1	1.9	1.8

RIO MAPOCHO EN RINCONADA DE MAIPU



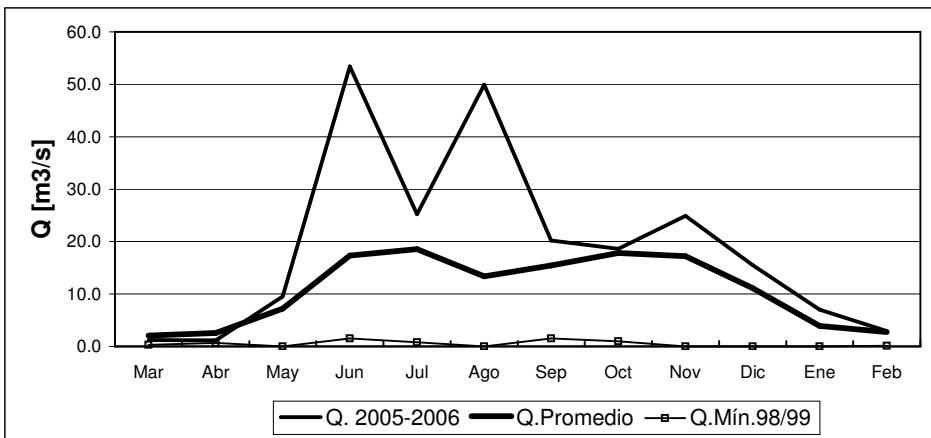
	Mar	Abr	May	Jun	Jul	Ago	Sep	Oct	Nov	Dic	Ene	Feb
Q. 2005-2006	35.5	29.2	48.2	122.1	52.3	67.9	55.9	60.6	72.4	64.9	48.6	39.5
Q.Promedio	18.7	18.1	21.0	30.3	35.9	31.6	28.0	27.1	29.5	29.7	22.6	19.6
Q.Mín.68/69	6.5	11.8	10.4	8.1	6.0	4.6	3.4	3.2	3.1	2.2	2.9	5.3

RIO MAIPO EN EL MANZANO



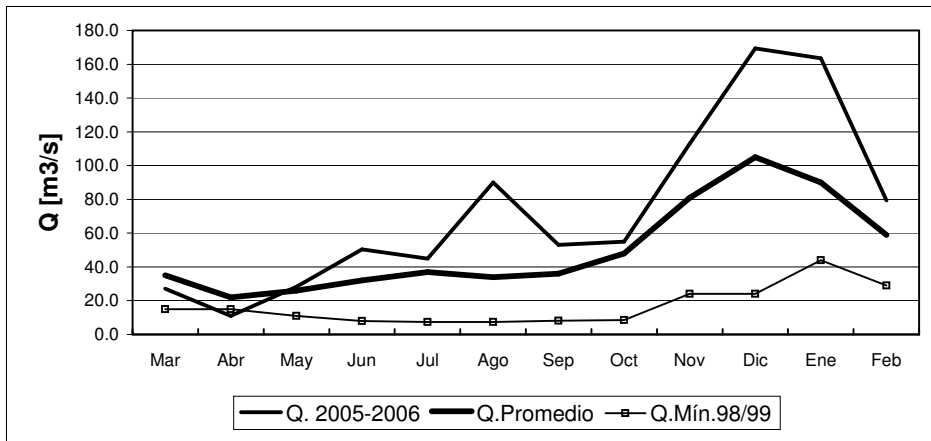
	Mar	Abr	May	Jun	Jul	Ago	Sep	Oct	Nov	Dic	Ene	Feb
Q. 2005-2006	74	55	50	105	87	114	126	162	249	396	453	302
Q. Promedio	99	69	60	57	59	59	68	96	156	207	200	141
Q. Mín.98/99	52	51	45	25	32	23	28	34	51	44	68	63

RIO CLARO EN EL VALLE 2



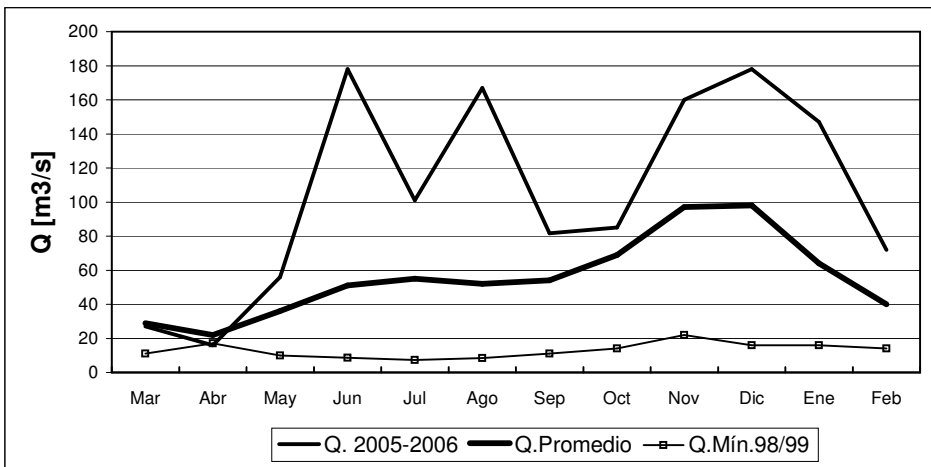
	Mar	Abr	May	Jun	Jul	Ago	Sep	Oct	Nov	Dic	Ene	Feb
Q. 2005-2006	1.2	1.1	9.5	53.4	25.2	49.9	20.2	18.6	24.9	15.5	7.0	2.9
Q. Promedio	2.1	2.6	7.2	17.3	18.6	13.4	15.5	17.9	17.2	11.1	3.9	2.7
Q. Mín.98/99	0.3	0.7	0.0	1.5	0.8	0.0	1.5	1.0	0.0	0.0	0.0	0.1

RIO TINGUIRIRICA BAJO BRIONES



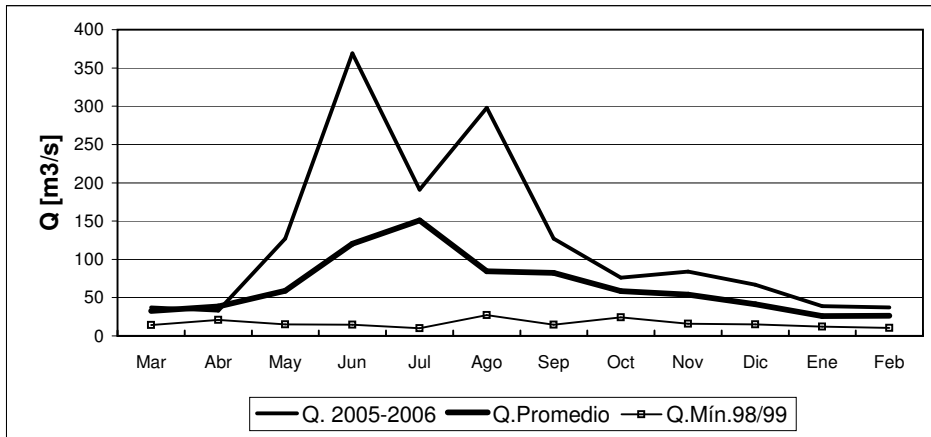
	Mar	Abr	May	Jun	Jul	Ago	Sep	Oct	Nov	Dic	Ene	Feb
Q. 2005-2006	27.1	11.0	28.2	50.5	44.9	90.0	53.0	55.0	113.0	169.4	163.5	79.3
Q. Promedio	35.0	22.0	26.0	32.0	37.0	34.0	36.0	48.0	81.0	105.0	90.0	59.0
Q. Mín.98/99	15.0	15.0	11.0	8.0	7.4	7.4	8.2	8.5	24.0	24.0	44.0	29.0

RIO TENO DESPUES DE JUNTA



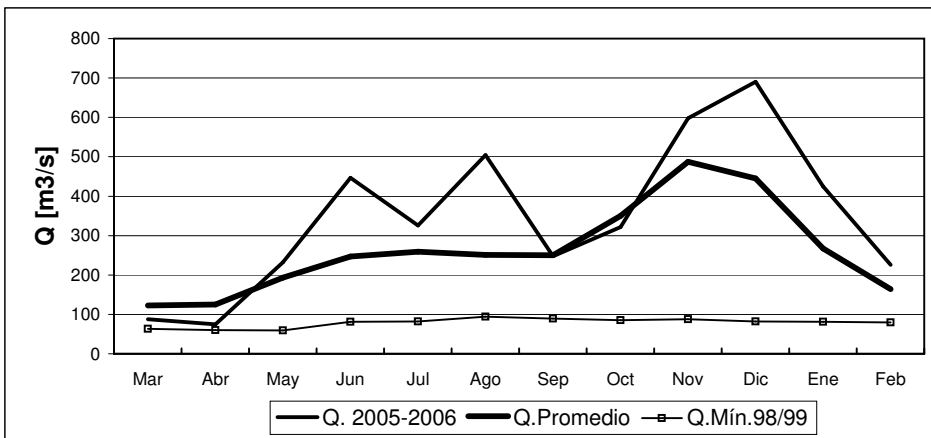
	Mar	Abr	May	Jun	Jul	Ago	Sep	Oct	Nov	Dic	Ene	Feb
Q. 2005-2006	27	16	56	178	101	167	82	85	160	178	147	72
Q. Promedio	29	22	36	51	55	52	54	69	97	98	64	40
Q. Mín.98/99	11	17	10	8.6	7.4	8.4	11	14	22	16	16	14

RIO CLARO EN RAUQUEN



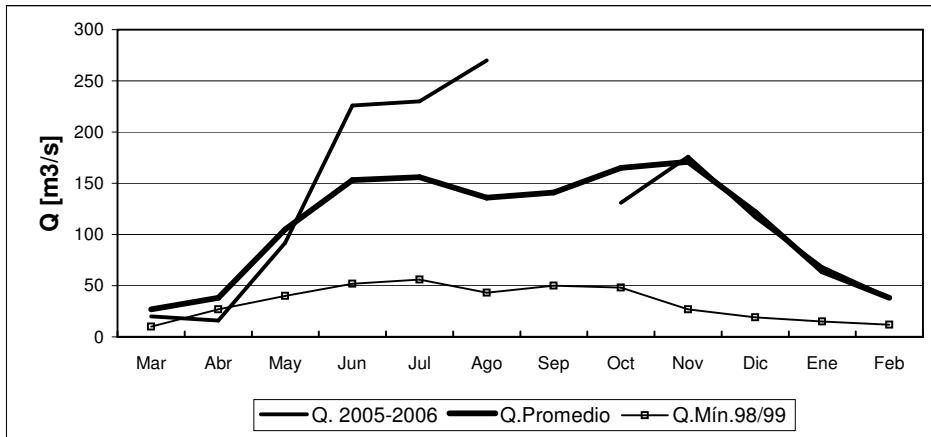
	Mar	Abr	May	Jun	Jul	Ago	Sep	Oct	Nov	Dic	Ene	Feb
Q. 2005-2006	37	33	127	369	191	298	127	76	84	67	39	37
Q. Promedio	33	39	59	121	151	84	82	58	54	41	26	26
Q. Mín.98/99	14	21	15	15	10	27	15	24	16	15	12	10

RIO MAULE EN ARMERILLO



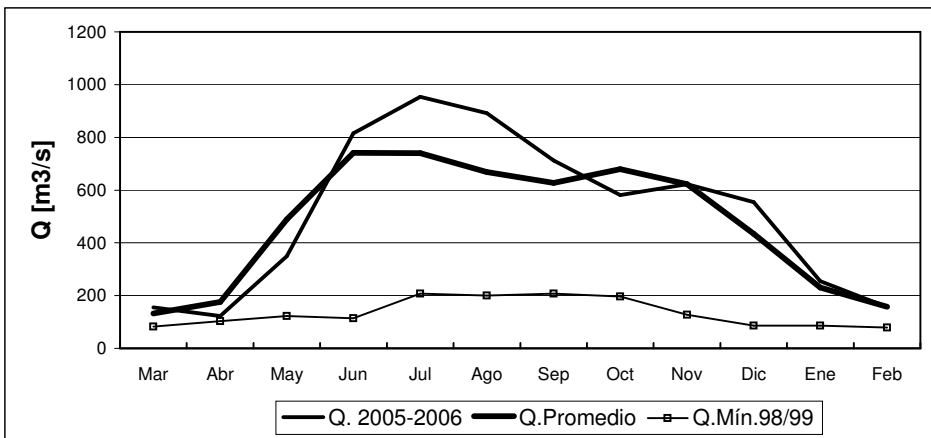
	Mar	Abr	May	Jun	Jul	Ago	Sep	Oct	Nov	Dic	Ene	Feb
Q. 2005-2006	88	75	232	447	326	504	248	322	598	690	425	226
Q. Promedio	123	125	193	247	259	251	250	350	487	445	267	164
Q. Mín.98/99	63	60	59	81	82	94	89	85	88	82	81	80

RIO ÑUBLE EN SAN FABIAN



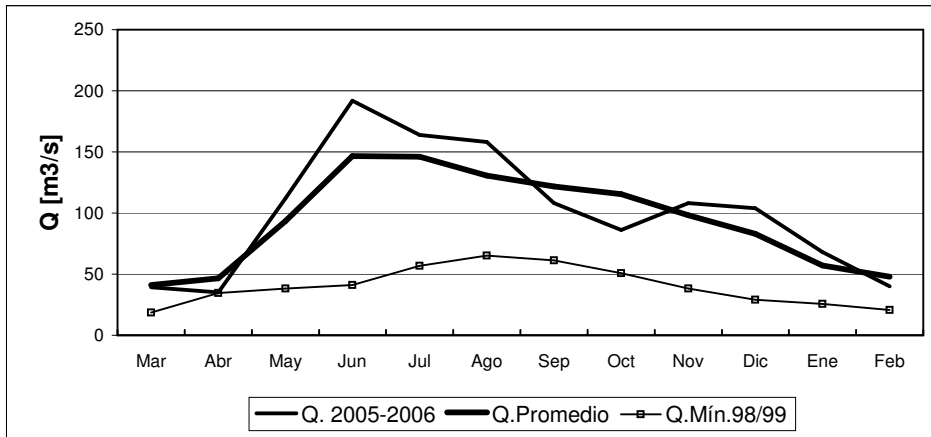
	Mar	Abr	May	Jun	Jul	Ago	Sep	Oct	Nov	Dic	Ene	Feb
Q. 2005-2006	20	16	92	226	230	270	141	131	176	117	68	38
Q. Promedio	27	38	105	153	156	136	141	165	171	122	64	38
Q. Mín.98/99	10	27	40	52	56	43	50	48	27	19	15	12

RIO BIO-BIO EN RUCALHUE



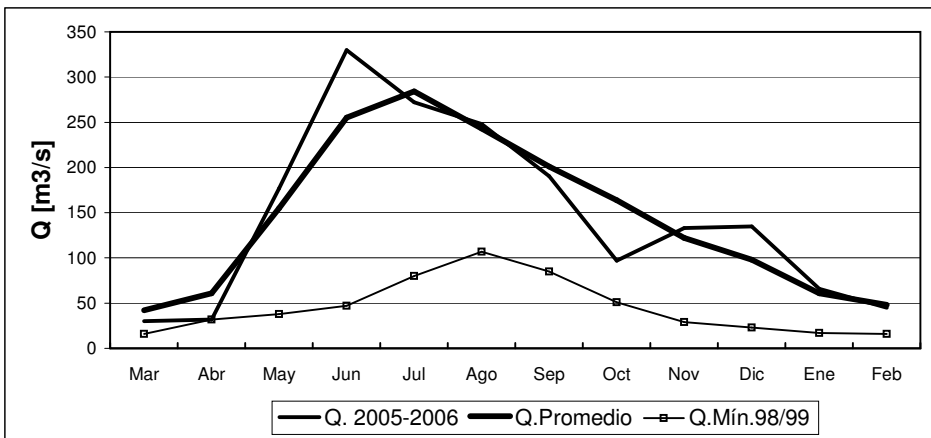
	Mar	Abr	May	Jun	Jul	Ago	Sep	Oct	Nov	Dic	Ene	Feb
Q. 2005-2006	155	123	350	815	954	892	713	581	622	554	255	157
Q. Promedio	132	176	489	741	740	668	627	679	622	434	231	158
Q. Mín.98/99	82	103	122	114	207	200	208	197	127	86	86	79

RIO CAUTIN EN RARI-RUCA



	Mar	Abr	May	Jun	Jul	Ago	Sep	Oct	Nov	Dic	Ene	Feb
Q. 2005-2006	39	35	112	192	164	158	108	86	108	104	68	40
Q. Promedio	41	47	93	147	146	131	122	116	98	83	57	48
Q. Mín.98/99	19	35	38	41	57	65	61	51	38	29	26	21

RIO CAUTIN EN CAJON

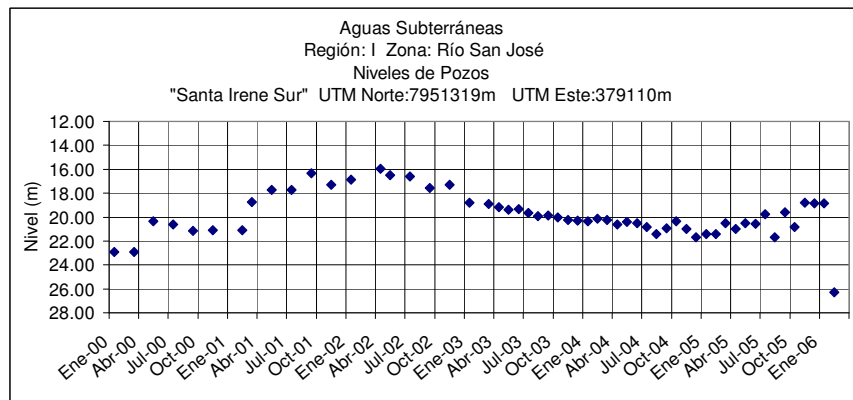


	Mar	Abr	May	Jun	Jul	Ago	Sep	Oct	Nov	Dic	Ene	Feb
Q. 2005-2006	30	32	177	330	272	248	190	97	133	135	66	45
Q. Promedio	42	61	155	255	284	243	201	164	122	98	61	48
Q. Mín.98/99	16	32	38	47	80	107	85	51	29	23	17	16

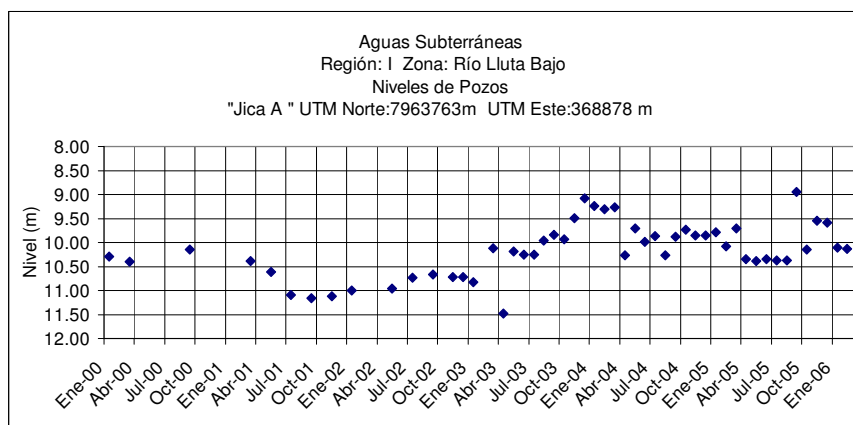
Informe de Aguas Subterráneas

Niveles de Pozos en metros

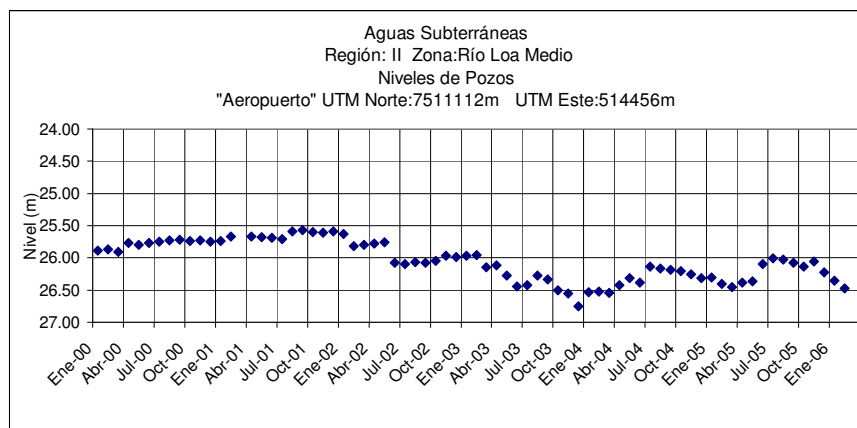
*Gráficos de últimos Seis años.



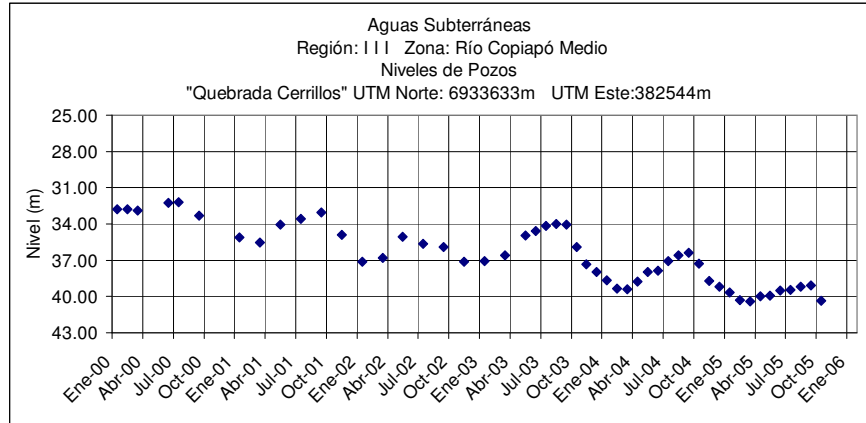
	Mar	Abr	May	Jun	Jul	Ago	Sep	Oct	Nov	Dic	Ene	Feb
2005 - 2006	20.50	21.00	20.52	20.54	19.75	21.67	19.60	20.82	18.78	18.86	18.84	26.30



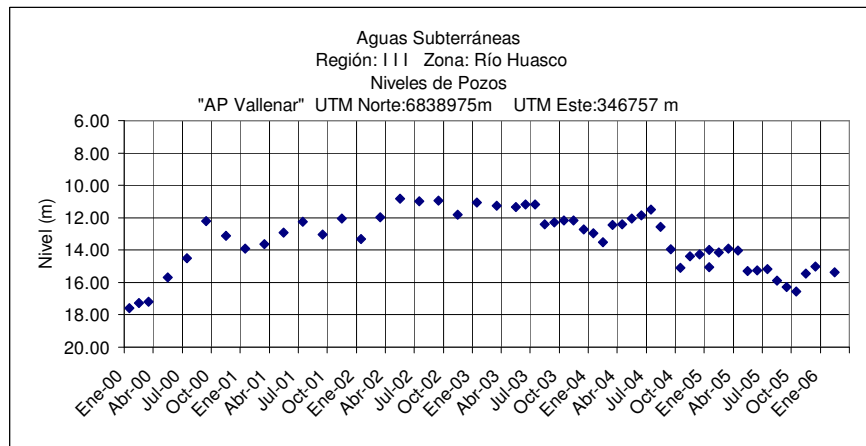
	Mar	Abr	May	Jun	Jul	Ago	Sep	Oct	Nov	Dic	Ene	Feb
2005 - 2006	9.71	10.34	10.39	10.35	10.37	10.37	8.95	10.15	9.55	9.58	10.11	10.13



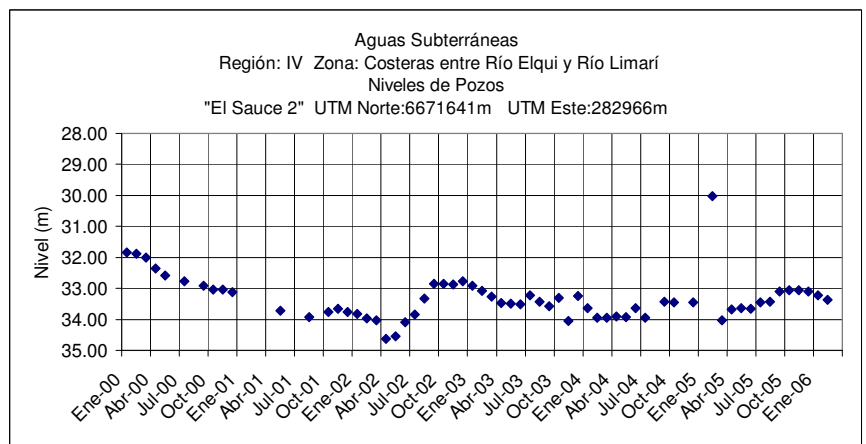
	Mar	Abr	May	Jun	Jul	Ago	Sep	Oct	Nov	Dic	Ene	Feb
2005 - 2006	26.45	26.38	26.36	26.10	26.01	26.03	26.08	26.14	26.06	26.23	26.35	26.47



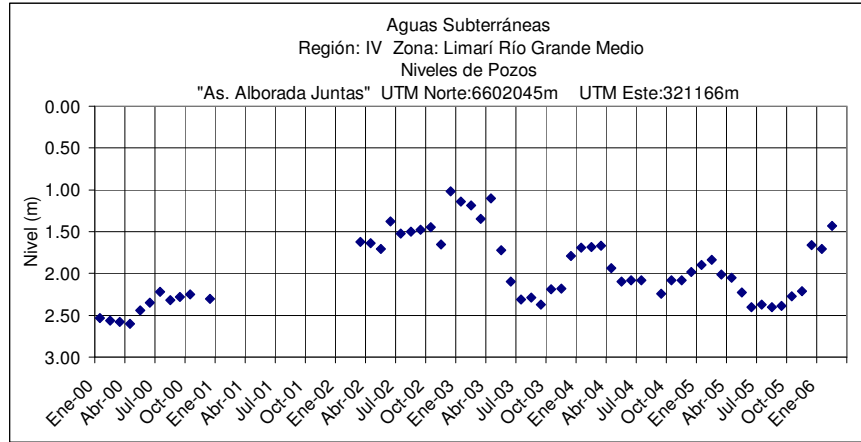
Year	Mar	Abr	May	Jun	Jul	Ago	Sep	Oct	Nov	Dic	Ene	Feb
2005 - 2006	40.42	39.98	39.92	39.51	39.46	39.19	39.06	40.36	-	-	-	-



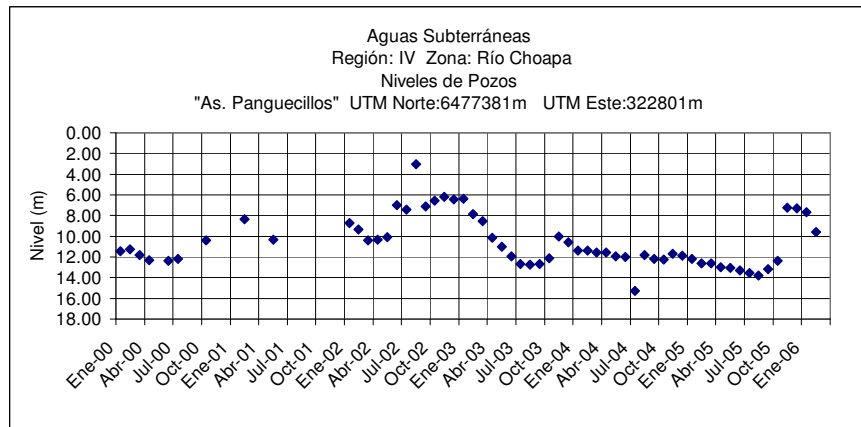
Year	Mar	Abr	May	Jun	Jul	Ago	Sep	Oct	Nov	Dic	Ene	Feb
2005 - 2006	13.90	14.02	15.28	15.26	15.17	15.87	16.29	16.56	15.45	15.03	15.37	15.07



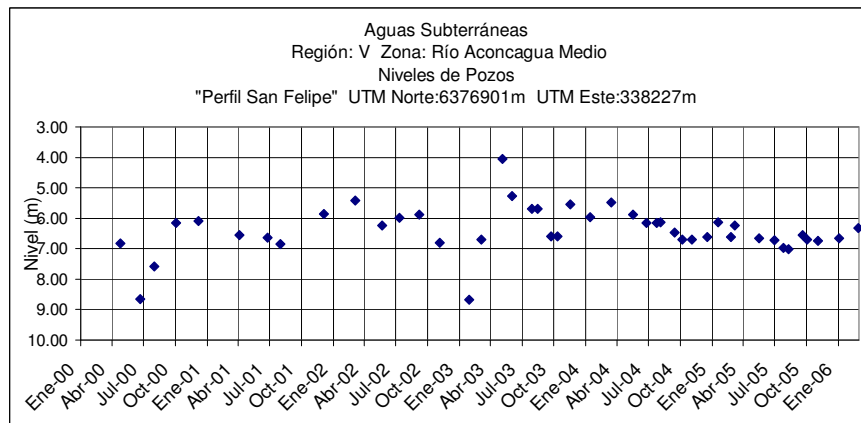
Year	Mar	Abr	May	Jun	Jul	Ago	Sep	Oct	Nov	Dic	Ene	Feb
2005 - 2006	34.03	33.68	33.64	33.66	33.46	33.43	33.10	33.06	33.05	33.10	33.23	33.36



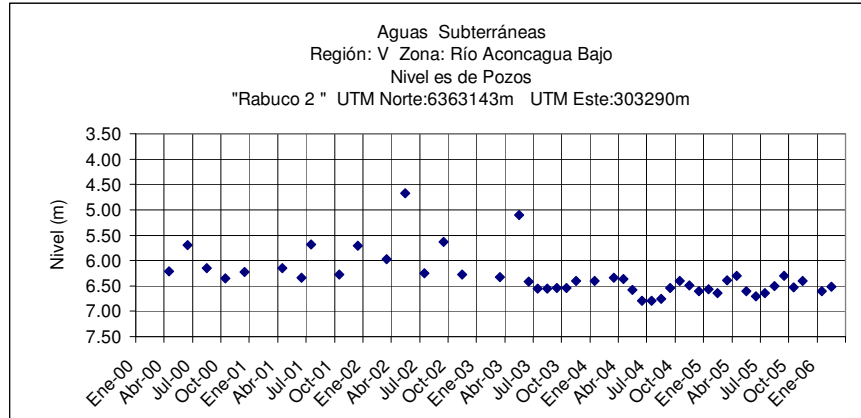
Year	Mar	Abr	May	Jun	Jul	Ago	Sep	Oct	Nov	Dic	Ene	Feb
2005 - 2006	2.01	2.05	2.23	2.40	2.37	2.40	2.39	2.27	2.21	1.66	1.71	1.43



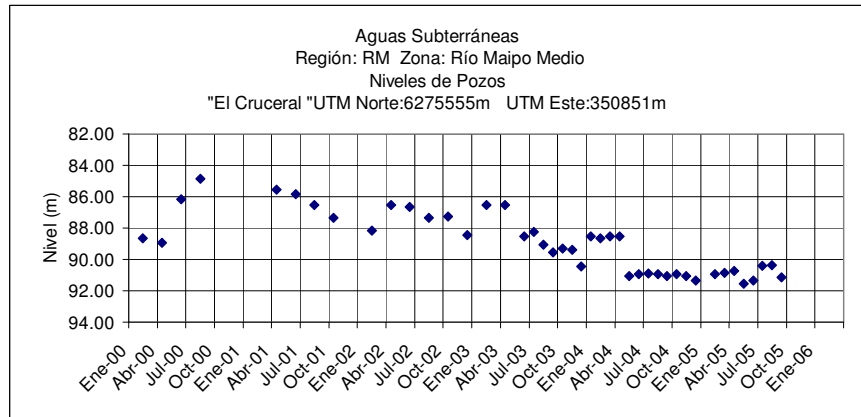
Year	Mar	Abr	May	Jun	Jul	Ago	Sep	Oct	Nov	Dic	Ene	Feb
2005 - 2006	12.60	12.96	13.08	13.27	13.55	13.78	13.16	12.39	7.24	7.21	7.68	9.61



Year	Mar	Abr	May	Jun	Jul	Ago	Sep	Oct	Nov	Dic	Ene	Feb
2005 - 2006	6.24	.	6.65	6.72	6.97	7.02	6.55	6.70	6.75	.	5.71	6.33

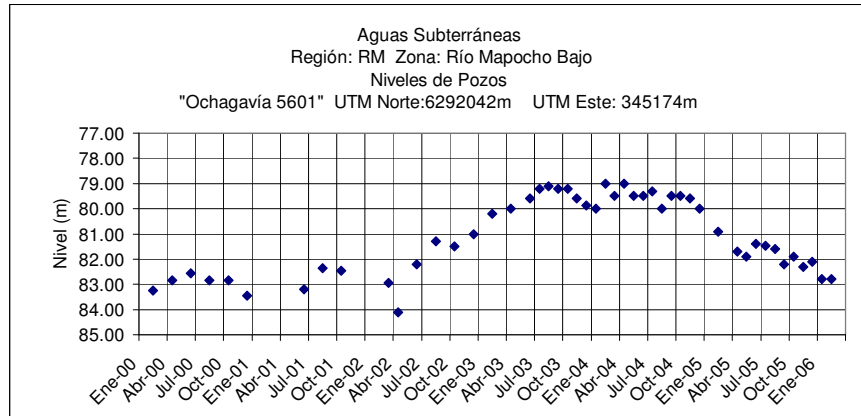


	Mar	Abr	May	Jun	Jul	Ago	Sep	Oct	Nov	Dic	Ene	Feb
2005 - 2006	6.39	6.30	6.61	6.70	6.64	6.50	6.30	6.53	6.40	.	6.61	6.52

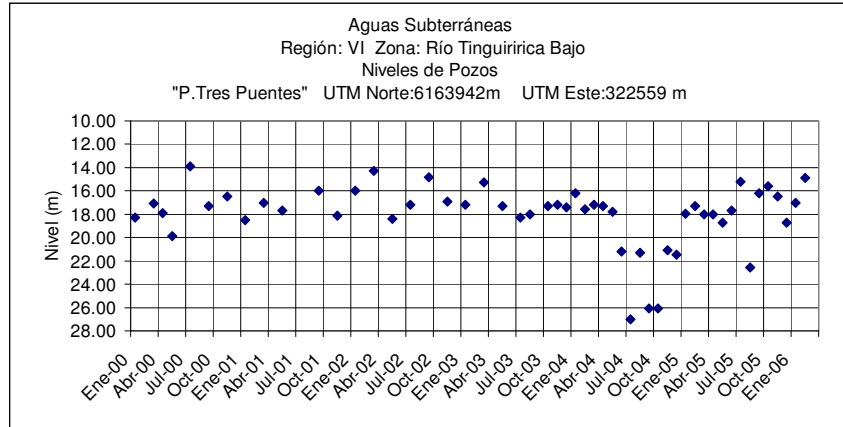


	Mar	Abr	May	Jun	Jul	Ago	Sep	Oct	Nov	Dic	Ene	Feb
2005 - 2006	90.85	90.75	91.55	91.35	90.40	90.35	91.15

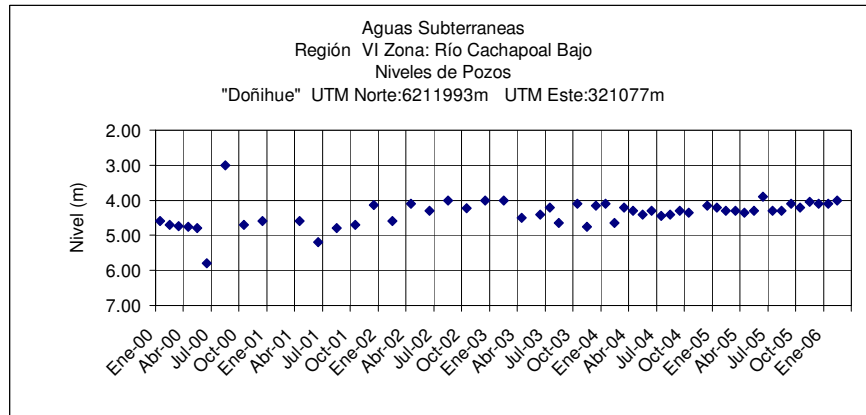
(Emb= Embancado)



	Mar	Abr	May	Jun	Jul	Ago	Sep	Oct	Nov	Dic	Ene	Feb
2005 - 2006	.	81.70	81.90	81.40	81.47	81.60	82.20	81.90	82.30	82.10	82.80	82.80



	Mar	Abr	May	Jun	Jul	Ago	Sep	Oct	Nov	Dic	Ene	Feb
2005 - 2006	18.00	18.00	18.75	17.70	15.20	22.55	16.20	15.60	16.50	18.75	17.00	14.90



	Mar	Abr	May	Jun	Jul	Ago	Sep	Oct	Nov	Dic	Ene	Feb
2005 - 2006	4.30	4.35	4.30	3.90	4.30	4.30	4.10	4.20	4.05	4.10	4.10	4.00