

Boletín N° : 335
Mes : Marzo
Año : 2006

DE : JAVIER NARBONA NARANJO
ING. JEFE DEPARTAMENTO DE HIDROLOGIA

*INFORMACION PLUVIOMETRICA, FLUVIOMETRICA,
ESTADO DE EMBALSES Y AGUAS SUBTERRANEAS*

Contenido :

- 1.- Informe pluviométrico
- 2.- Volúmenes de embalses
- 3.- Informe fluviométrico
- 4.- Informe aguas subterráneas

En Internet (www.dga.cl) se publica: .

- Los informes de este boletín
- Caudales en tiempo real

NOTA: Datos provisorios sujetos a modificaciones posteriores

INFORME PLUVIOMETRICO NACIONAL N°03

ESTACIONES	MARZO	TOTALES AL 31 DE MARZO			EXCESO O DÉFICIT (%)
		2006 (mm)	2005 (mm)	PROMEDIO (mm)	
CENTRAL CHAPIQUIÑA	34.5	155.5	96.5	129.0	21
EMBALSE CONCHI	0.0	33.2	23.0	15.7*	111
CALAMA	0.0	0.7	0.5	1.5	- 54
ANTOFAGASTA	0.0	0.0	0.0	0.6	-100
COPIAPÓ	0.0	0.0	0.0	0.5	-100
EMBALSE LAUTARO	0.0	0.0	0.0	1.1	-100
VALLENAR	0.0	0.0	0.0	0.7	-100
RIVADAVIA	0.0	0.0	4.0	1.1	-100
VICUÑA	0.0	0.0	0.0	0.9	-100
LA SERENA	0.0	0.0	0.0	0.4	-100
OVALLE	0.0	0.0	0.0	0.4	-100
EMBALSE PALOMA	0.0	0.0	0.0	0.4	-100
COGOTÍ 18	0.0	0.0	2.0	0.5	-100
HUINTIL	0.0	0.0	5.5	1.8	-100
COIRÓN	0.0	0.0	3.0	2.6	-100
VILCUYA	0.0	11.0	45.0	7.3	52
SAN FELIPE	0.0	0.0	16.6	1.8	-100
LAGO PEÑUELAS	0.0	0.0	18.5	4.4	-100
EMBALSE EL YESO	2.5	10.3	52.7	19.3	- 47
CERRO CALAN	0.0	0.0	27.8	5.9	-100
SANTIAGO (MOP)	0.0	0.2	20.0	4.7	- 96
RANCAGUA	0.0	0.0	13.5	9.7	-100
SAN FERNANDO	0.0	0.0	14.0	13.7	-100
CONVENTO VIEJO	0.0	1.5	15.5	12.4	- 88
CURICO	0.0	1.0	13.0	17.4	- 94
TALCA	0.0	11.3	32.2	22.0	- 49
COLORADO	0.0	40.5	26.2	42.7	- 5
LINARES	0.0	20.7	29.9	35.6	- 42
PARRAL	2.3	32.6	25.3	43.4	- 25
EMBALSE DIGUA	5.0	66.5	22.3	63.0	6
CHILLÁN	14.0	41.0	18.2	55.3	- 26
CONCEPCIÓN	10.1	50.2	22.4	66.9	- 25
LOS ÁNGELES	21.9	66.0	29.7	69.4	- 5
CAÑETE	83.7	133.7	58.0	99.8	34
ANGOL	16.6	50.6	34.1	59.8	- 15
TEMUCO	68.5	143.6	112.1	131.2	9
VALDIVIA	73.0	229.2	176.9	222.0	3
OSORNO	61.5	181.2	120.9	182.3	- 1
PUERTO MONTT	177.7	484.5	329.3	309.5	57
COYHAIQUE	124.1	249.6	180.3	188.6*	32
PUNTA ARENAS	50.0	166.8	98.9	94.6	76

Promedios acumulados para el período 1961-1990 (D.G.A)

* : Promedios calculados para períodos inferiores a 30 años

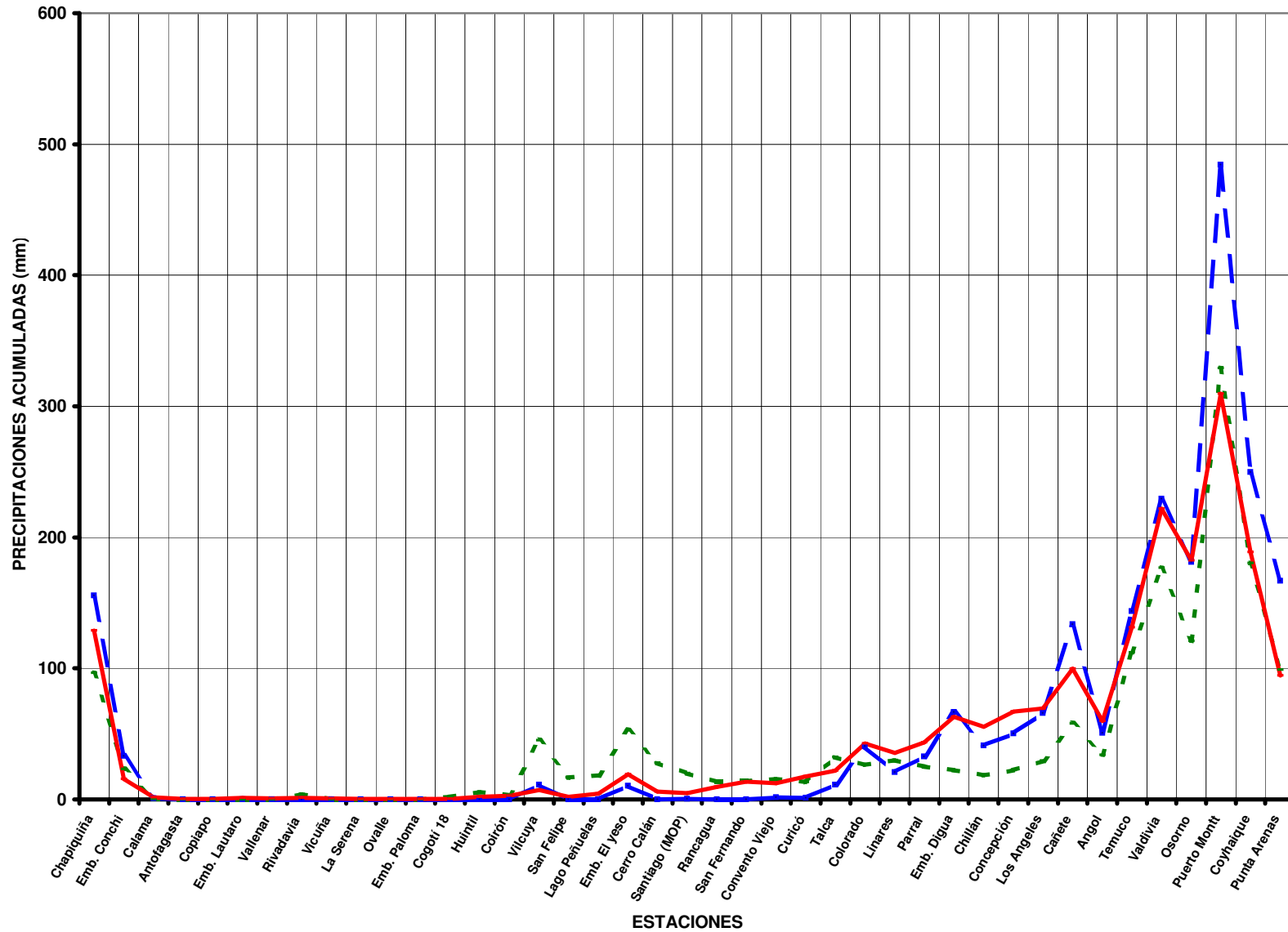
Valores expresados en milímetros (1 mm = 1 lt x m2)

TOTALES DE LLUVIA HASTA EL
31 de Marzo del 2006

Normal

Año 2006

Año 2005



ESTADO DE EMBALSES

Ultimo día del mes
(Volúmenes en mill-m³)

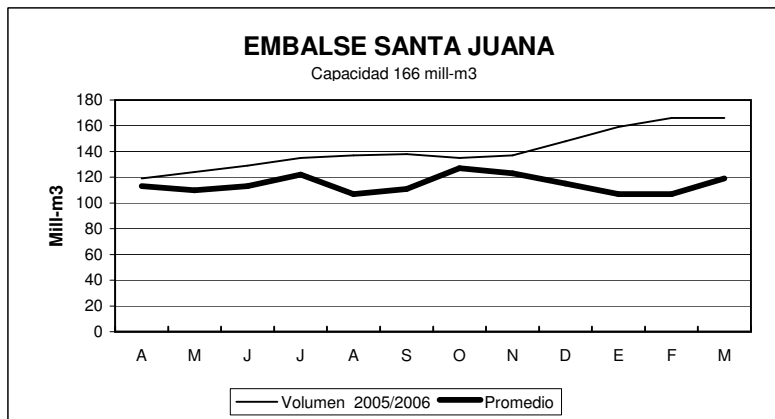
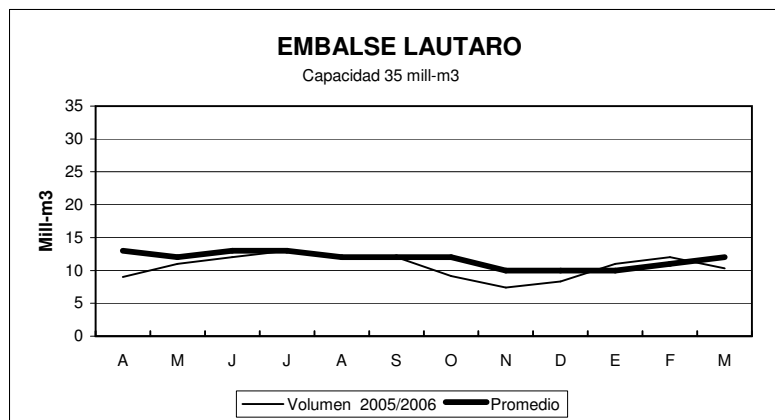
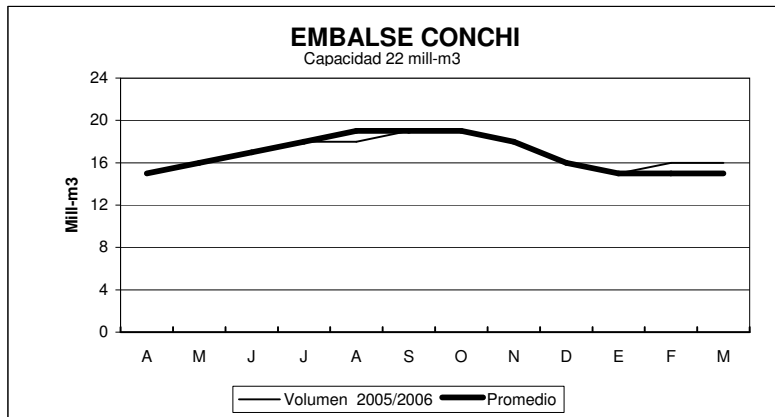
EMBALSE	REGION	CUENCA	CAPACIDAD	PROMEDIO	Marzo	
				HISTORICO MENSUAL	2006	2005
Conchi	II	Loa	22	15	16	15
Lautaro	III	Copiapó	35	12	10	7
Santa Juana	III	Huasco	166	119	166	121
La Laguna	IV	Elqui	40	24	28	25
Puclaro	IV	Elqui	200	117	200	134
Recoleta	IV	Limarí	100	58	92	68
La Paloma	IV	Limarí	748	395	542	430
Cogotí	IV	Limarí	150	75	86	56
Culimo	IV	Quilimarí	10	3.0	0.4	0.6
Corrales	IV	Illapel	50	39	49	33
Peñuelas	V	Peñuelas	95	22	22	29
El Yeso	RM	Maipo	256	200	249	231
Rungue	RM	Maipo	2.2	0.3	0.3	0.2
Rapel	VI	Rapel	695	579	530	505
Colbún	VII	Maule	1544	1057	1148	942
Lag. Maule	VII	Maule	1420	968	1144	802
Bullileo	VII	Maule	60	3	0	1.3
Digua	VII	Maule	220	28	11	6.5
Tutuvén	VII	Maule	15	2.0	2.0	2.1
Coihueco	VIII	Itata	29	7	6.6	6
Lago Laja (&)	VIII	Bio-Bio	5582	3361	2709	1923

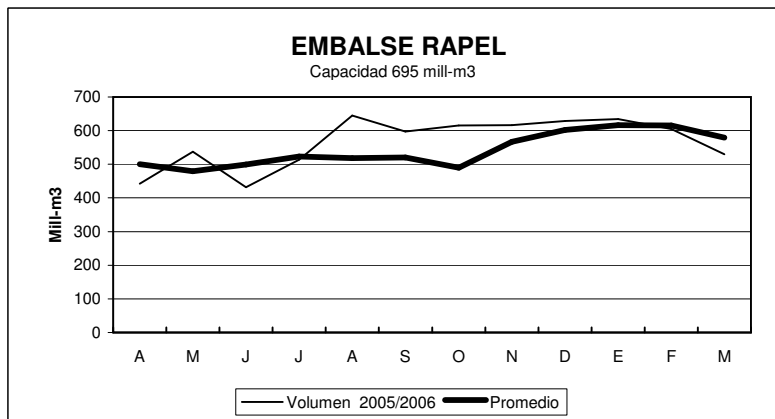
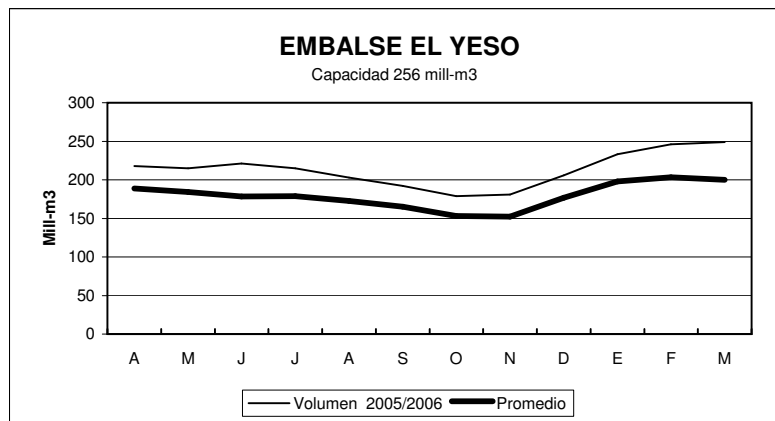
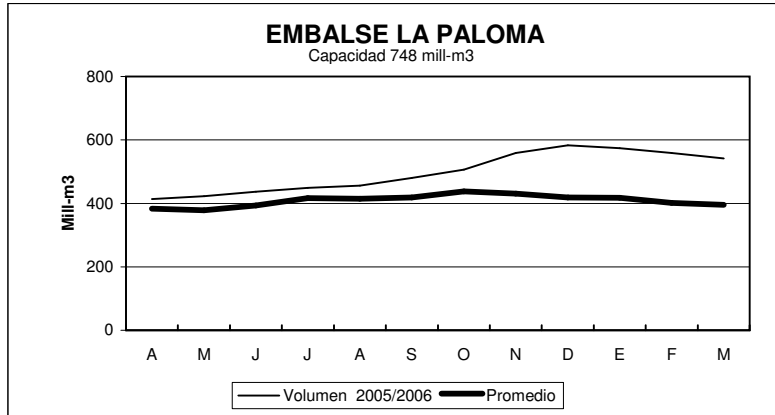
RESUMEN ANUAL

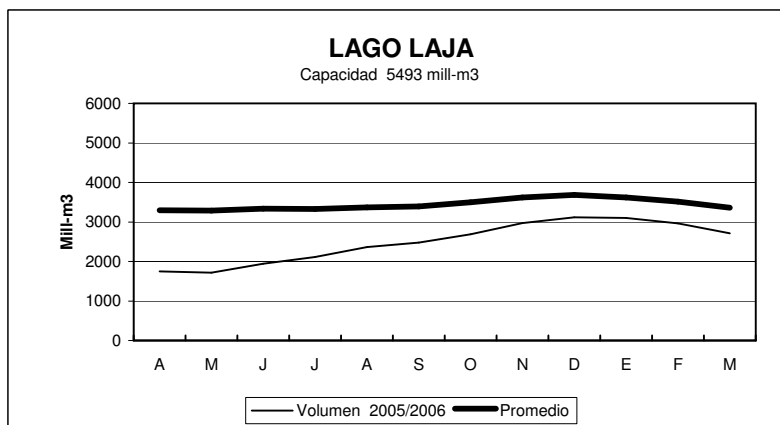
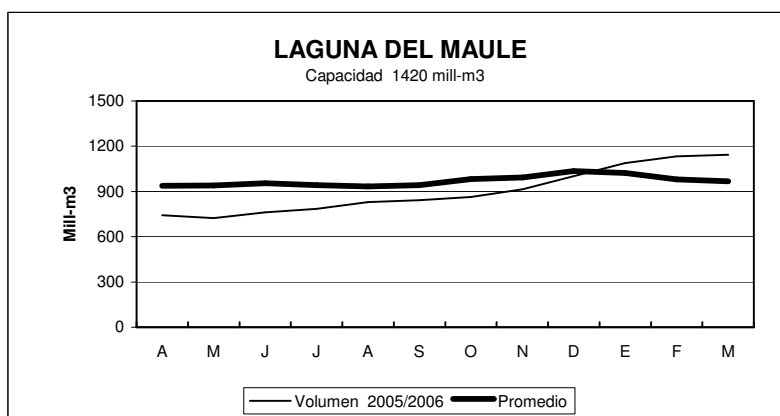
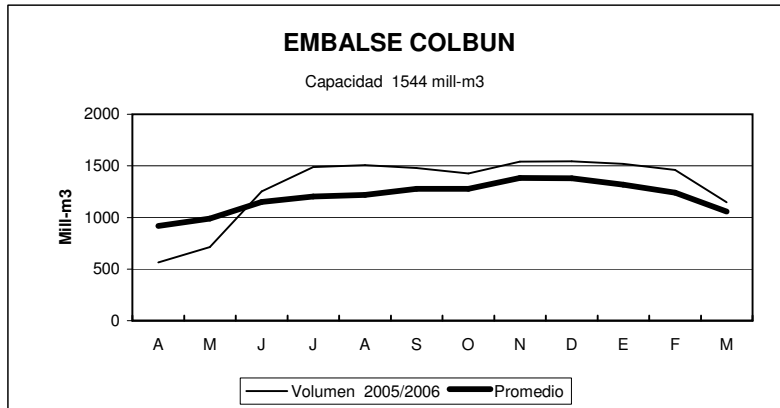
EMBALSE	2005-2006											
	A	M	J	J	A	S	O	N	D	E	F	M
Conchi	15	16	17	18	18	19	19	18	16	15	16	16
Lautaro	9	11	12	13	12	12	9	7	8	11	12	10
Santa Juana	119	124	129	135	137	138	135	137	148	159	166	166
La Laguna	26	25	27	29	31	32	36	37	38	36	31	28
Puclaro	128	133	137	140	140	141	142	155	189	200	200	200
Recoleta	65	69	73	75	77	80	81	86	91	91	100	92
La Paloma	414	423	437	449	456	480	506	559	583	574	559	542
Cogotí	53	54	58	61	63	73	80	100	104	98	92	86
Culimo	0.0	0.0	0.0	0.0	1.3	3.1	3.7	2.9	2.4	1.9	1.2	0.4
Corrales	31	31	32	32	37	42	43	44	46	49	49	49
Peñuelas	27	28	29	30	35	35	34	32	29	27	24	22
El Yeso	218	215	221	215	203	192	179	181	206	233	246	249
Rungue	0.1	0.1	0.6	1.2	2.0	2.1	2.0	1.9	2.2	1.0	0.6	0.3
Rapel	442	537	432	514	645	597	615	616	629	634	605	530
Colbún	565	714	1253	1488	1506	1480	1425	1542	1544	1519	1462	1148
Lag. Maule	743	723	761	786	829	843	863	914	1001	1088	1134	1144
Bullileo	0	19	44	60	60	60	60	60	60	49	24	0
Digua	4.0	28	105	160	219	220	220	199	220	93	34	11
Tutuvén	0	3	15	13	15	13	12	12	15	6.1	4	2.0
Coihueco	1.4	1.6	13.4	24	28.3	29	29	29	28	22	14	6.6
Lago Laja (&)	1748	1716	1943	2110	2365	2480	2690	2970	3119	3104	2966	2709

(&) : Volumen sobre cota 1300 msnm

ESTADO DE EMBALSES



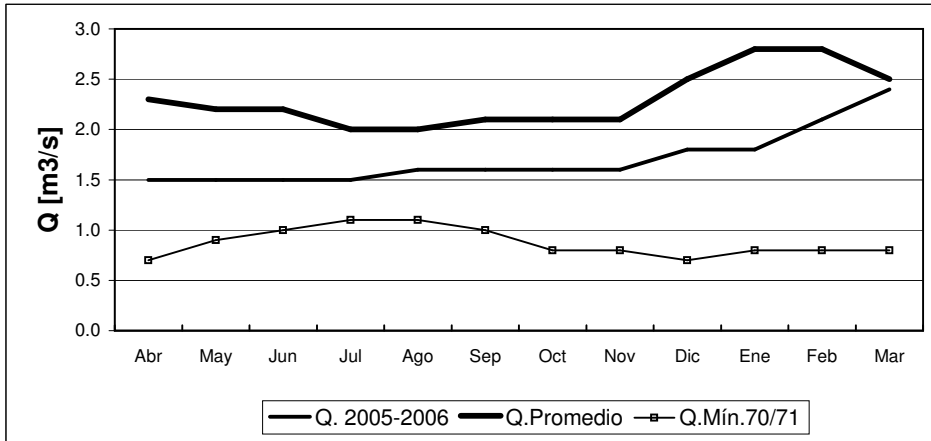




INFORME FLUVIOMETRICO
Caudales medios mensuales en m3/seg

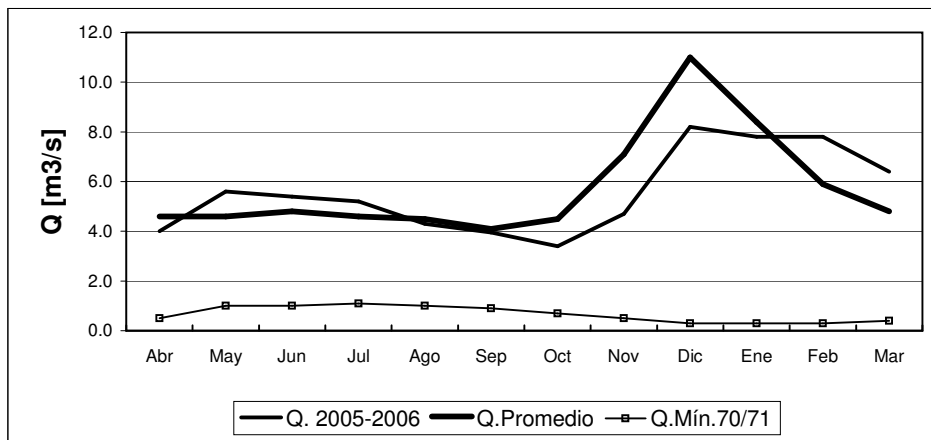
Mar-06

RIO COPIAPO EN LA PUERTA



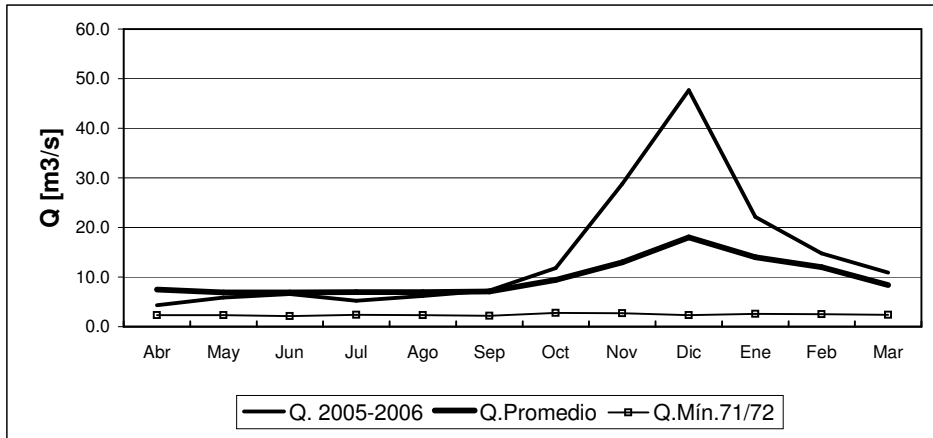
	Abr	May	Jun	Jul	Ago	Sep	Oct	Nov	Dic	Ene	Feb	Mar
Q. 2005-2006	1.5	1.5	1.5	1.5	1.6	1.6	1.6	1.6	1.8	1.8	2.1	2.4
Q.Promedio	2.3	2.2	2.2	2.0	2.0	2.1	2.1	2.1	2.5	2.8	2.8	2.5
Q.Mín.70/71	0.7	0.9	1.0	1.1	1.1	1.0	0.8	0.8	0.7	0.8	0.8	0.8

RIO HUASCO EN ALGODONES



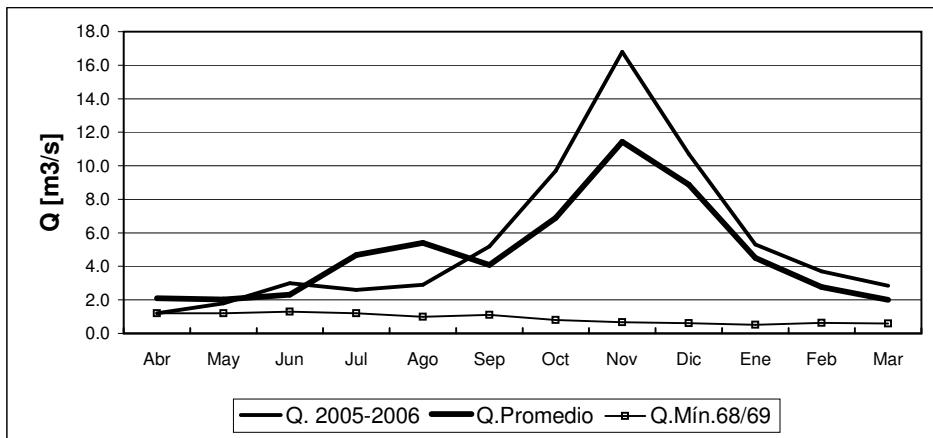
	Abr	May	Jun	Jul	Ago	Sep	Oct	Nov	Dic	Ene	Feb	Mar
Q. 2005-2006	4.0	5.6	5.4	5.2	4.3	4.0	3.4	4.7	8.2	7.8	7.8	6.4
Q.Promedio	4.6	4.6	4.8	4.6	4.5	4.1	4.5	7.1	11.0	8.4	5.9	4.8
Q.Mín.70/71	0.5	1.0	1.0	1.1	1.0	0.9	0.7	0.5	0.3	0.3	0.3	0.4

RIO ELQUI EN ALGARROBAL



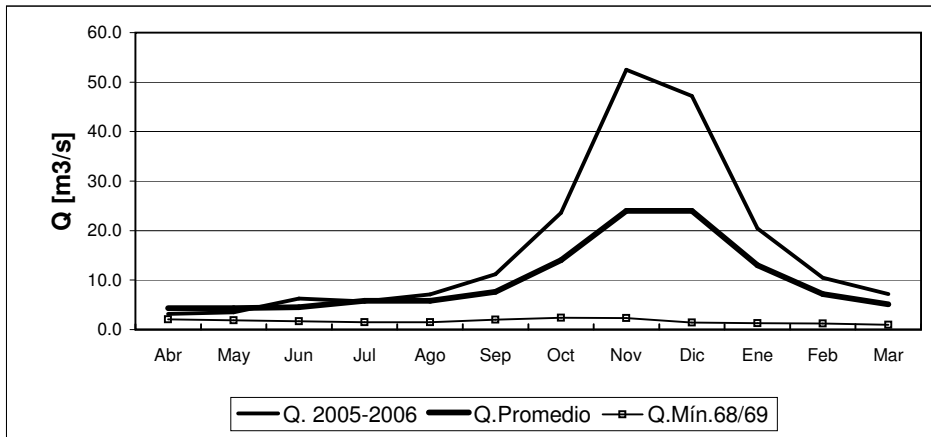
	Abr	May	Jun	Jul	Ago	Sep	Oct	Nov	Dic	Ene	Feb	Mar
Q. 2005-2006	4.3	5.9	6.6	5.2	6.2	7.3	11.8	28.8	47.7	22.1	14.8	10.9
Q. Promedio	7.5	6.9	6.9	7.0	7.0	7.1	9.4	13.0	18.0	14.0	12.0	8.4
Q. Mín. 71/72	2.3	2.3	2.1	2.4	2.3	2.2	2.8	2.7	2.3	2.6	2.5	2.4

RIO GRANDE EN LAS RAMADAS



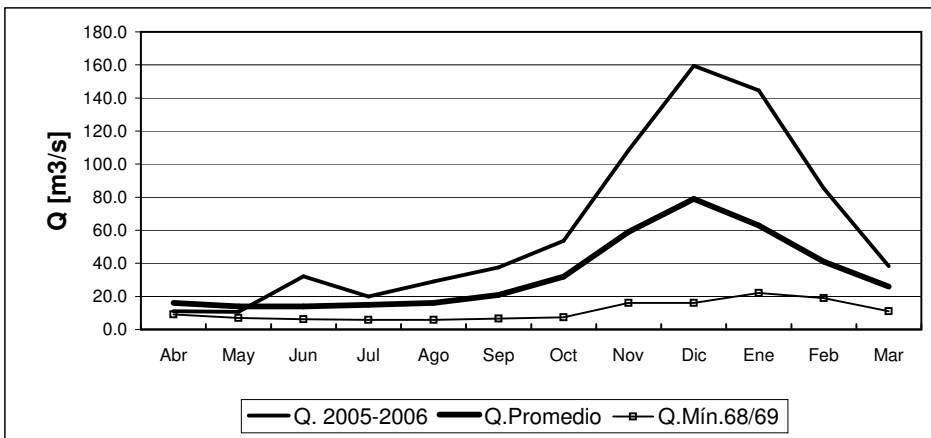
	Abr	May	Jun	Jul	Ago	Sep	Oct	Nov	Dic	Ene	Feb	Mar
Q. 2005-2006	1.2	1.8	3.0	2.6	2.9	5.2	9.7	16.8	10.7	5.3	3.7	2.9
Q. Promedio	2.1	2.0	2.3	4.7	5.4	4.1	6.9	11.4	8.9	4.5	2.8	2.0
Q. Mín. 68/69	1.2	1.2	1.3	1.2	1.0	1.1	0.8	0.7	0.6	0.5	0.6	0.6

RIO CHOAPA EN CUNCUMEN



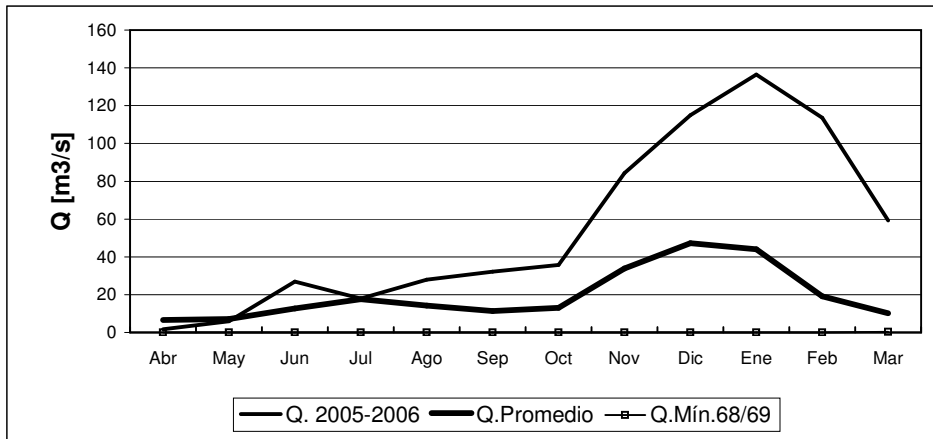
	Abr	May	Jun	Jul	Ago	Sep	Oct	Nov	Dic	Ene	Feb	Mar
Q. 2005-2006	3.2	3.5	6.3	5.7	7.1	11.2	23.6	52.5	47.2	20.4	10.5	7.2
Q.Promedio	4.3	4.3	4.5	5.8	5.8	7.6	14.0	24.0	24.0	13.0	7.2	5.1
Q.Mín.68/69	2.1	1.9	1.7	1.5	1.5	2.0	2.4	2.3	1.4	1.3	1.2	1.0

RIO ACONCAGUA EN CHACABUQUITO



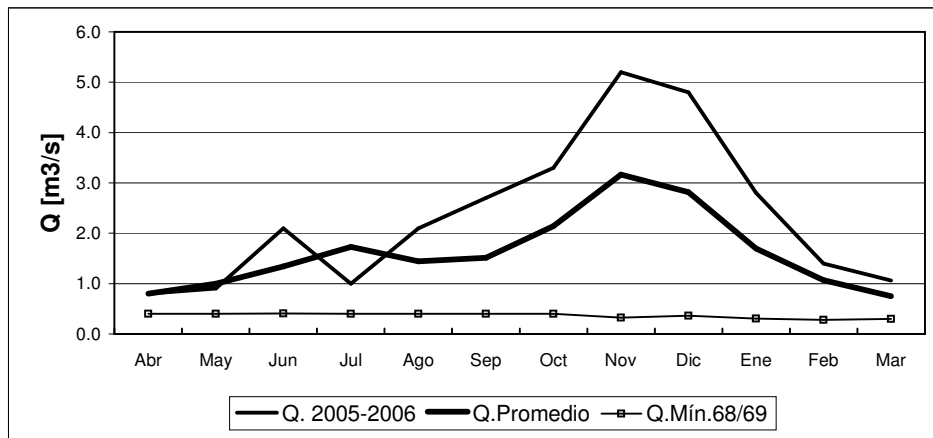
	Abr	May	Jun	Jul	Ago	Sep	Oct	Nov	Dic	Ene	Feb	Mar
Q. 2005-2006	11.1	10.6	32.2	20.0	29.1	37.5	53.7	108.4	159.5	144.6	85.3	38.3
Q.Promedio	16.0	14.0	14.0	15.0	16.0	21.0	32.0	59.0	79.0	63.0	41.0	26.0
Q.Mín.68/69	9.1	6.9	6.2	5.9	5.9	6.6	7.4	16.0	16.0	22.0	19.0	11.0

RIO ACONCAGUA EN SAN FELIPE



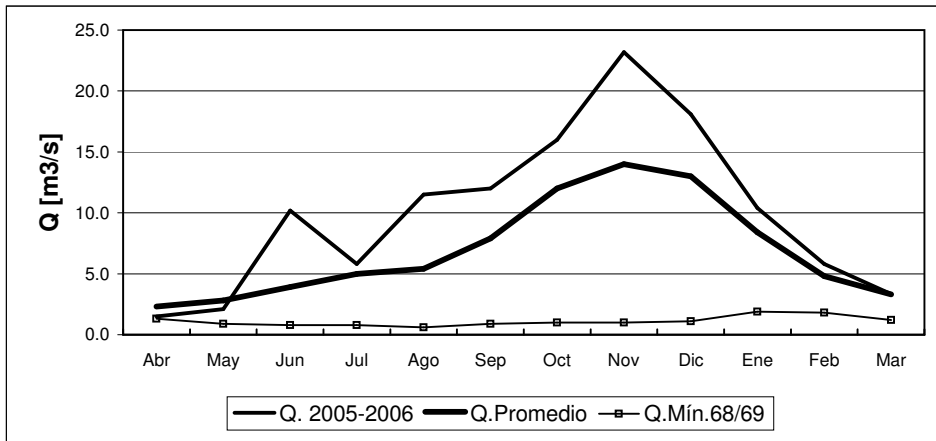
	Abr	May	Jun	Jul	Ago	Sep	Oct	Nov	Dic	Ene	Feb	Mar
Q. 2005-2006	1.7	6.0	26.9	18.0	28	32.2	35.8	84.4	115.0	136.5	113.6	59.2
Q.Promedio	6.7	7.1	12.7	17.6	14.2	11.3	13.0	33.8	47.3	44.1	19.1	10.2
Q.Mín.68/69	0.0	0.0	0.0	0.0	0.0	0.0	0.0	0.0	0.0	0.0	0.0	0.3

ESTERO ARRAYAN EN LA MONTOSA



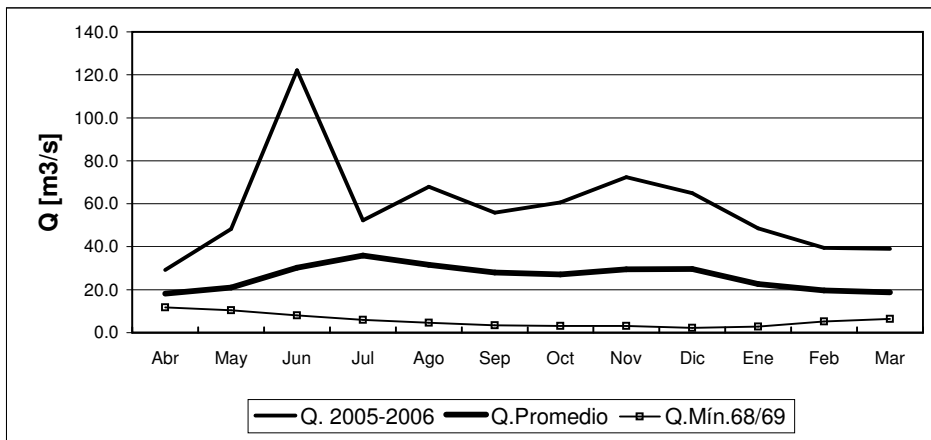
	Abr	May	Jun	Jul	Ago	Sep	Oct	Nov	Dic	Ene	Feb	Mar
Q. 2005-2006	0.8	0.9	2.1	1.0	2.1	2.7	3.3	5.2	4.8	2.8	1.4	1.1
Q.Promedio	0.8	1.0	1.3	1.7	1.4	1.5	2.1	3.2	2.8	1.7	1.1	0.8
Q.Mín.68/69	0.4	0.4	0.4	0.4	0.4	0.4	0.4	0.3	0.4	0.3	0.3	0.3

RIO MAPOCHO EN LOS ALMENDROS



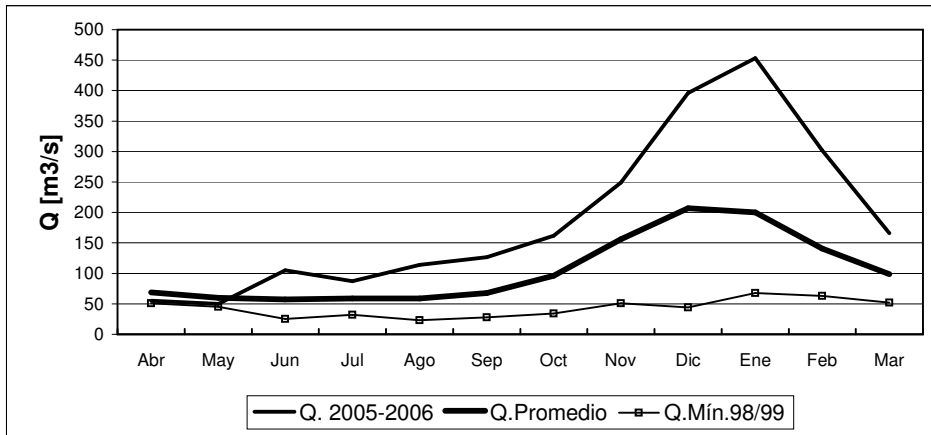
	Abr	May	Jun	Jul	Ago	Sep	Oct	Nov	Dic	Ene	Feb	Mar
Q. 2005-2006	1.5	2.1	10.2	5.8	11.5	12.0	16.0	23.2	18.1	10.4	5.8	3.3
Q.Promedio	2.3	2.8	3.9	5.0	5.4	7.9	12.0	14.0	13.0	8.4	4.8	3.3
Q.Mín.68/69	1.3	0.9	0.8	0.8	0.6	0.9	1.0	1.0	1.1	1.9	1.8	1.2

RIO MAPOCHO EN RINCONADA DE MAIPU



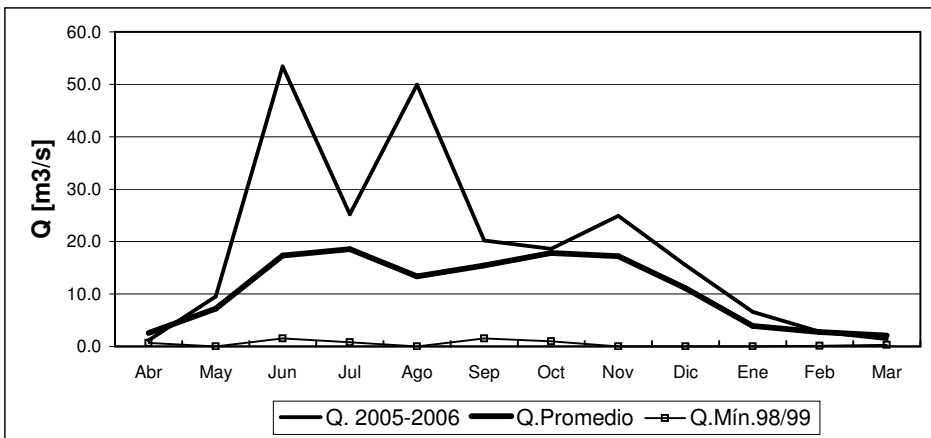
	Abr	May	Jun	Jul	Ago	Sep	Oct	Nov	Dic	Ene	Feb	Mar
Q. 2005-2006	29.2	48.2	122.1	52.3	67.9	55.9	60.6	72.4	64.9	48.6	39.5	39.0
Q.Promedio	18.1	21.0	30.3	35.9	31.6	28.0	27.1	29.5	29.7	22.6	19.6	18.7
Q.Mín.68/69	11.8	10.4	8.1	6.0	4.6	3.4	3.2	3.1	2.2	2.9	5.3	6.5

RIO MAIPO EN EL MANZANO



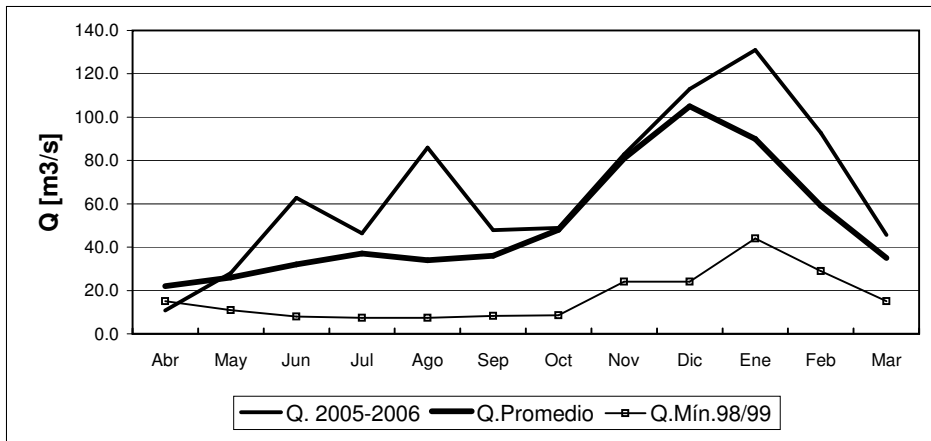
	Abr	May	Jun	Jul	Ago	Sep	Oct	Nov	Dic	Ene	Feb	Mar
Q. 2005-2006	55	50	105	87	114	126	162	249	396	453	302	166
Q.Promedio	69	60	57	59	59	68	96	156	207	200	141	99
Q.Mín.98/99	51	45	25	32	23	28	34	51	44	68	63	52

RIO CLARO EN EL VALLE 2



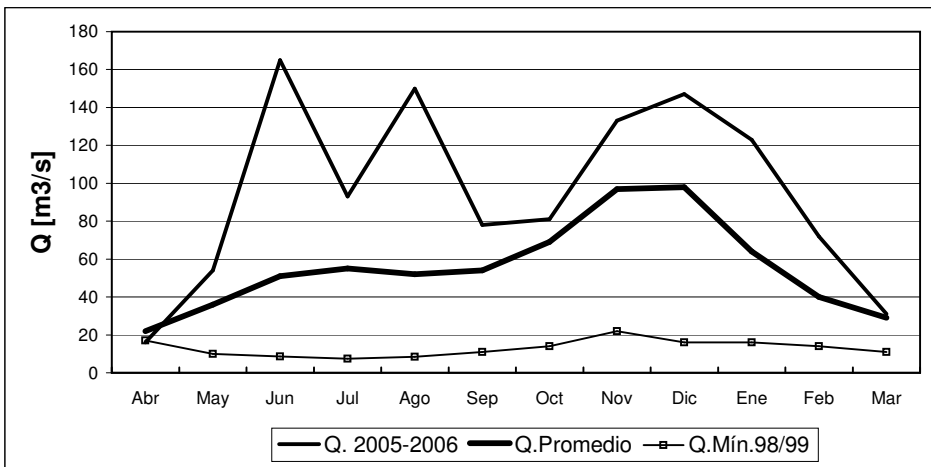
	Abr	May	Jun	Jul	Ago	Sep	Oct	Nov	Dic	Ene	Feb	Mar
Q. 2005-2006	1.1	9.5	53.4	25.2	49.9	20.2	18.6	24.9	15.5	6.6	2.8	1.4
Q.Promedio	2.6	7.2	17.3	18.6	13.4	15.5	17.9	17.2	11.1	3.9	2.7	2.1
Q.Mín.98/99	0.7	0.0	1.5	0.8	0.0	1.5	1.0	0.0	0.0	0.0	0.1	0.3

RIO TINGUIRIRICA BAJO BRIONES



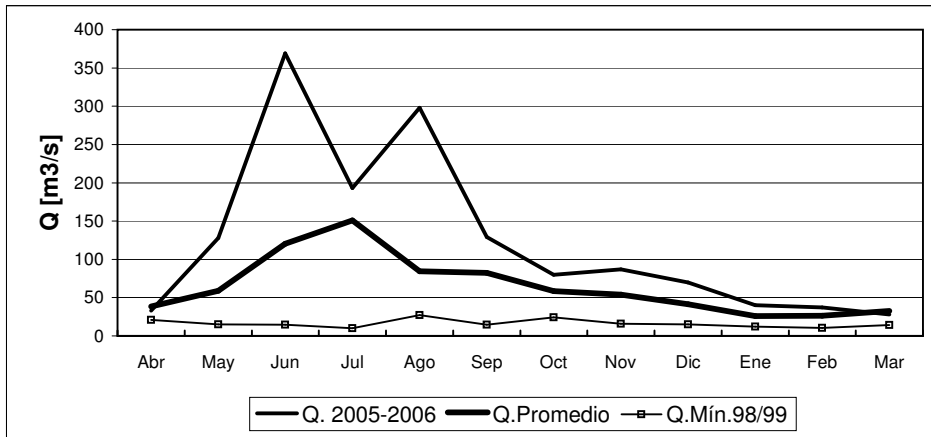
	Abr	May	Jun	Jul	Ago	Sep	Oct	Nov	Dic	Ene	Feb	Mar
Q. 2005-2006	10.8	28.1	62.8	46.3	86.0	47.9	48.9	82.8	113.0	131.0	92.7	45.7
Q. Promedio	22.0	26.0	32.0	37.0	34.0	36.0	48.0	81.0	105.0	90.0	59.0	35.0
Q. Mín. 98/99	15.0	11.0	8.0	7.4	7.4	8.2	8.5	24.0	24.0	44.0	29.0	15.0

RIO TENO DESPUES DE JUNTA



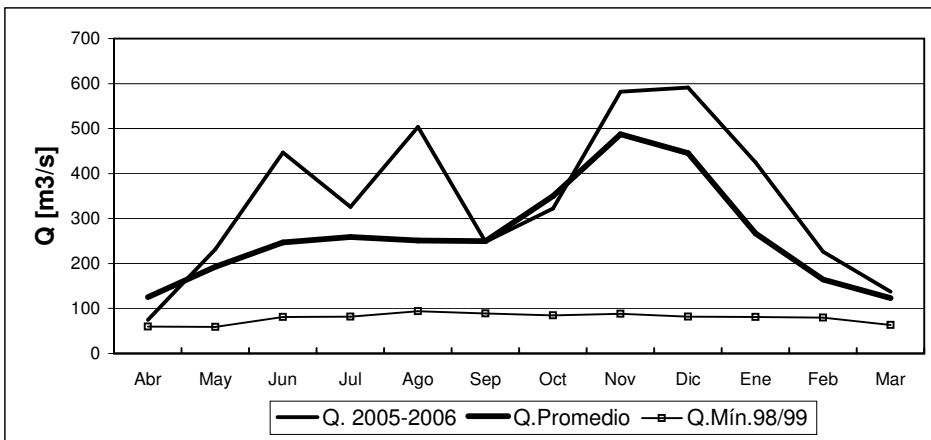
	Abr	May	Jun	Jul	Ago	Sep	Oct	Nov	Dic	Ene	Feb	Mar
Q. 2005-2006	16	54	165	93	150	78	81	133	147	123	72	31
Q. Promedio	22	36	51	55	52	54	69	97	98	64	40	29
Q. Mín. 98/99	17	10	8.6	7.4	8.4	11	14	22	16	16	14	11

RIO CLARO EN RAUQUEN



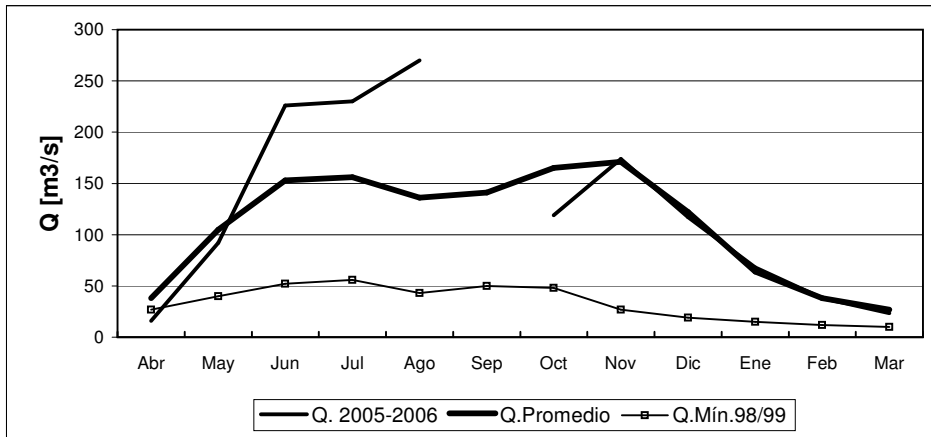
	Abr	May	Jun	Jul	Ago	Sep	Oct	Nov	Dic	Ene	Feb	Mar
Q. 2005-2006	33	128	369	193	298	129	80	87	70	40	37	28
Q. Promedio	39	59	121	151	84	82	58	54	41	26	26	33
Q. Mín.98/99	21	15	15	10	27	15	24	16	15	12	10	14

RIO MAULE EN ARMERILLO



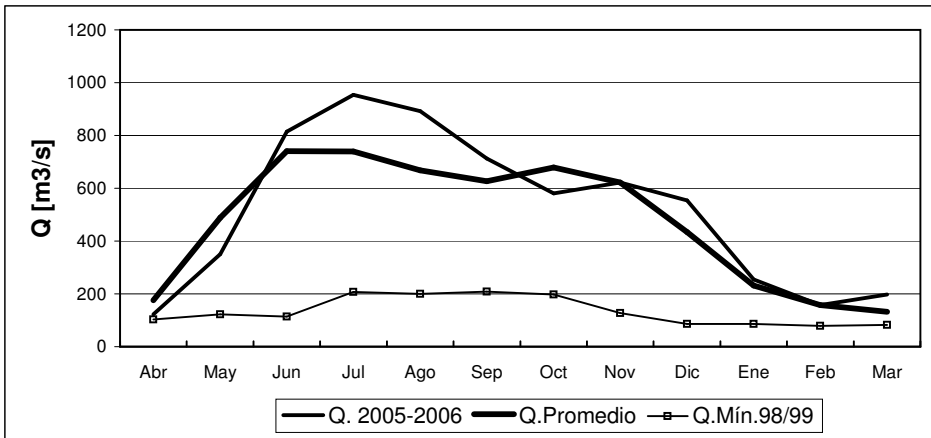
	Abr	May	Jun	Jul	Ago	Sep	Oct	Nov	Dic	Ene	Feb	Mar
Q. 2005-2006	75	232	447	326	504	248	322	582	591	425	226	137
Q. Promedio	125	193	247	259	251	250	350	487	445	267	164	123
Q. Mín.98/99	60	59	81	82	94	89	85	88	82	81	80	63

RIO ÑUBLE EN SAN FABIAN



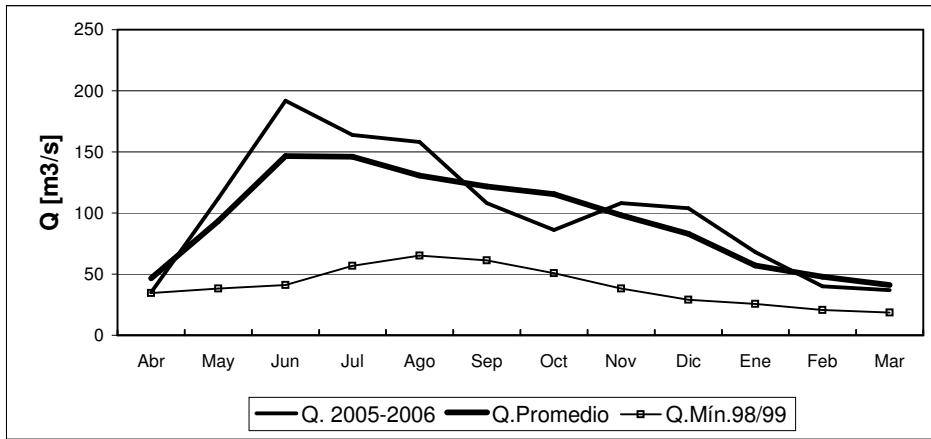
	Abr	May	Jun	Jul	Ago	Sep	Oct	Nov	Dic	Ene	Feb	Mar
Q. 2005-2006	16	92	226	230	270	141	119	174	117	68	38	23
Q. Promedio	38	105	153	156	136	141	165	171	122	64	38	27
Q. Mín.98/99	27	40	52	56	43	50	48	27	19	15	12	10

RIO BIO-BIO EN RUCALHUE



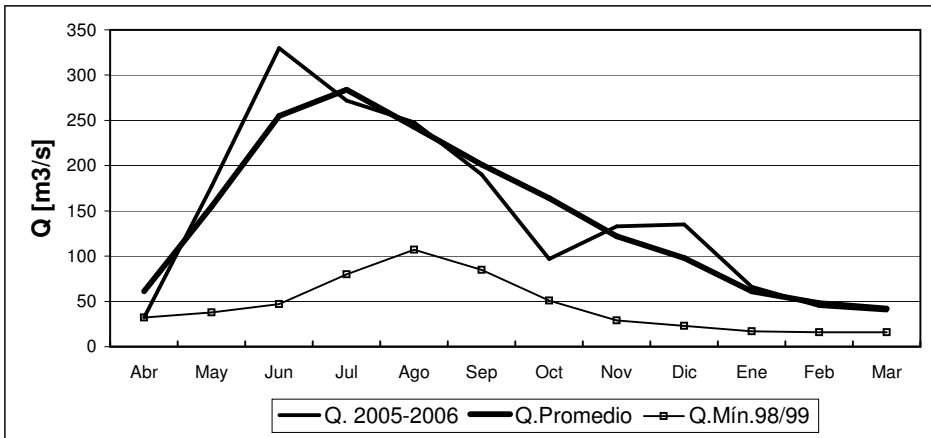
	Abr	May	Jun	Jul	Ago	Sep	Oct	Nov	Dic	Ene	Feb	Mar
Q. 2005-2006	123	350	815	954	892	713	581	622	554	255	157	198
Q. Promedio	176	489	741	740	668	627	679	622	434	231	158	132
Q. Mín.98/99	103	122	114	207	200	208	197	127	86	86	79	82

RIO CAUTIN EN RARI-RUCA



	Abr	May	Jun	Jul	Ago	Sep	Oct	Nov	Dic	Ene	Feb	Mar
Q. 2005-2006	35	112	192	164	158	108	86	108	104	68	40	37
Q.Promedio	47	93	147	146	131	122	116	98	83	57	48	41
Q.Mín.98/99	35	38	41	57	65	61	51	38	29	26	21	19

RIO CAUTIN EN CAJON

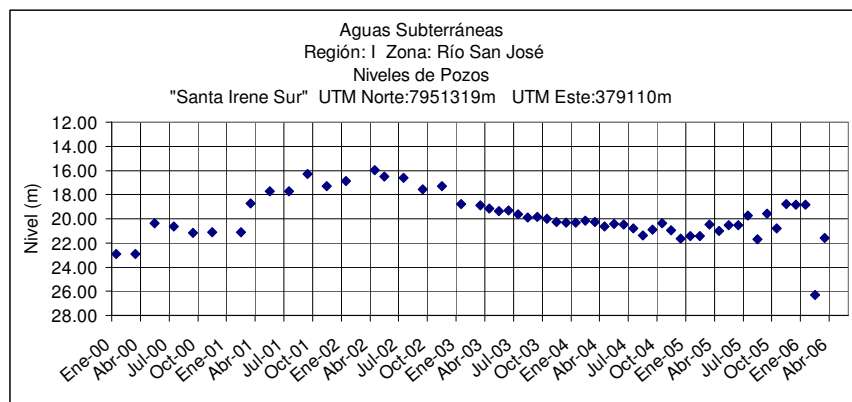


	Abr	May	Jun	Jul	Ago	Sep	Oct	Nov	Dic	Ene	Feb	Mar
Q. 2005-2006	32	177	330	272	248	190	97	133	135	66	45	40
Q.Promedio	61	155	255	284	243	201	164	122	98	61	48	42
Q.Mín.98/99	32	38	47	80	107	85	51	29	23	17	16	16

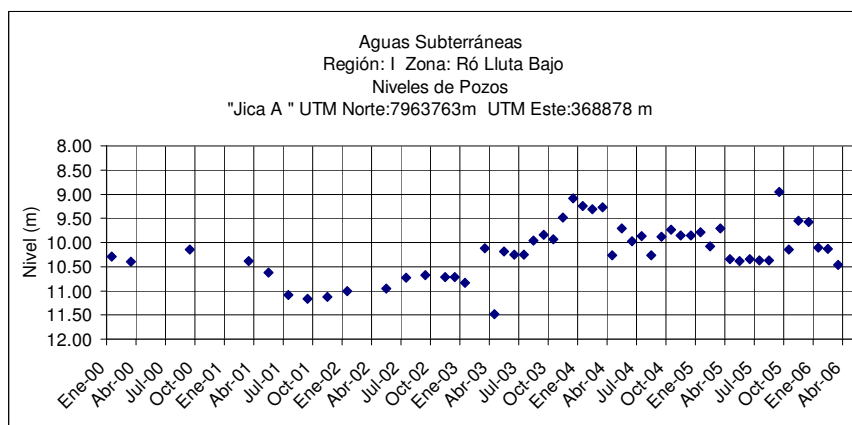
Informe de Aguas Subterráneas

Niveles de Pozos en metros

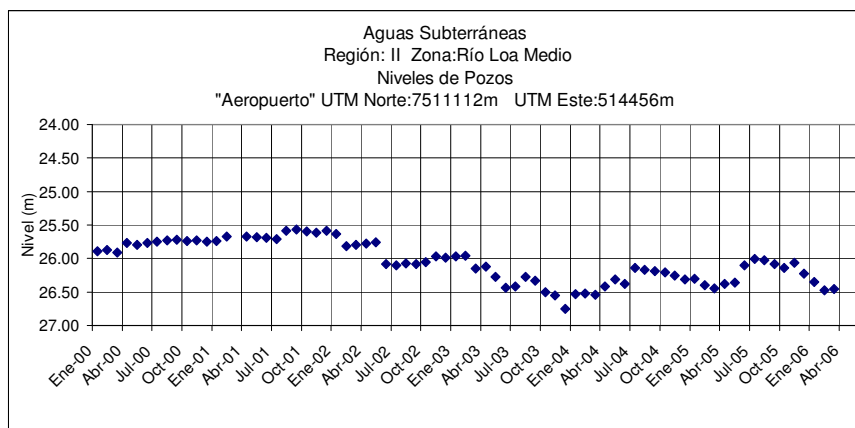
*Gráficos de últimos cinco años.



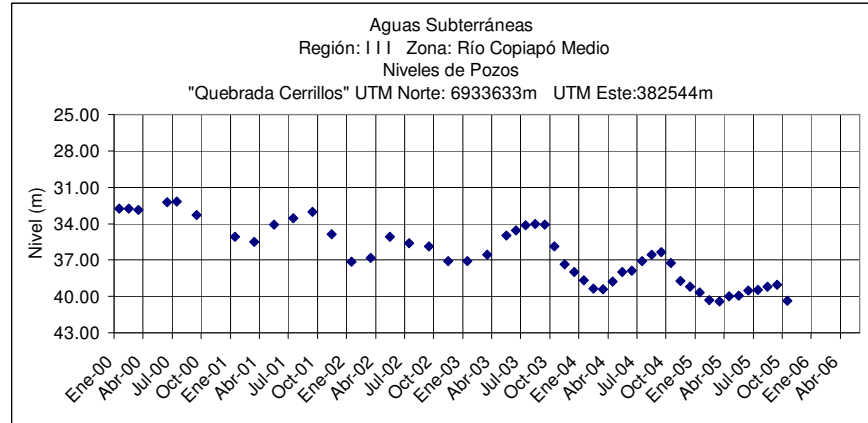
	Abr	May	Jun	Jul	Ago	Sep	Oct	Nov	Dic	Ene	Feb	Mar
2005-2006	21.00	20.52	20.54	19.75	21.67	19.60	20.82	18.78	18.86	18.84	26.30	21.59



	Abr	May	Jun	Jul	Ago	Sep	Oct	Nov	Dic	Ene	Feb	Mar
2005-2006	10.34	10.39	10.35	10.37	10.37	8.95	10.15	9.55	9.58	10.11	10.13	10.46

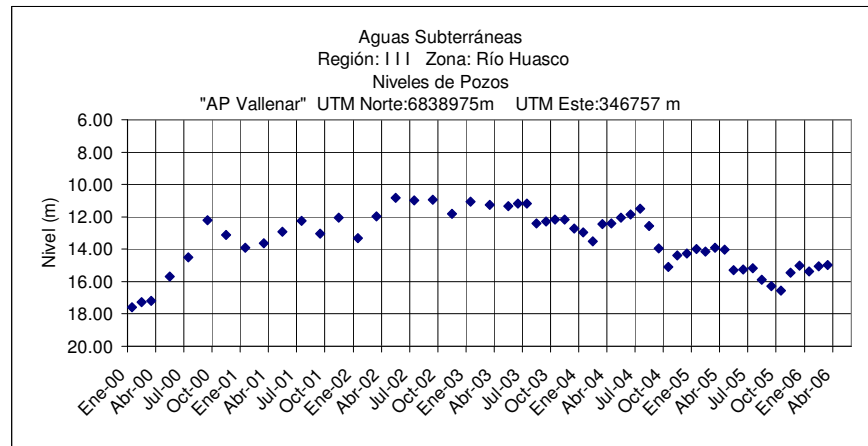


	Abr	May	Jun	Jul	Ago	Sep	Oct	Nov	Dic	Ene	Feb	Mar
2005-2006	26.38	26.36	26.10	26.01	26.03	26.08	26.14	26.06	26.23	26.35	26.47	26.46

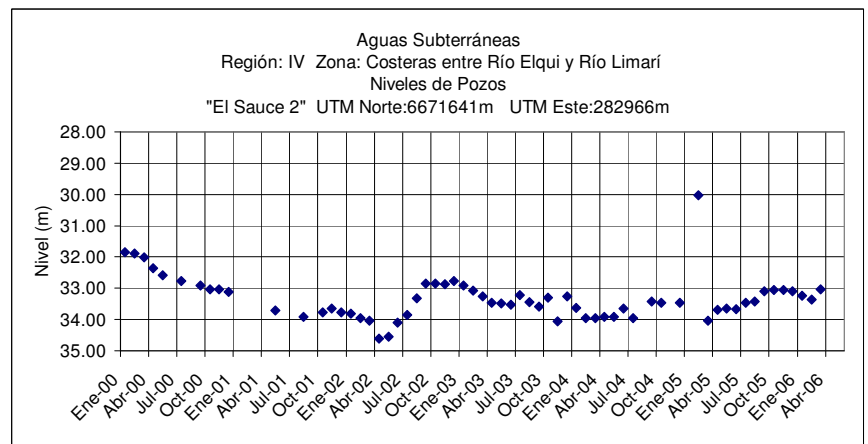


	Abr	May	Jun	Jul	Ago	Sep	Oct	Nov	Dic	Ene	Feb	Mar
2005-2006	39.98	39.92	39.51	39.46	39.19	39.06	40.36

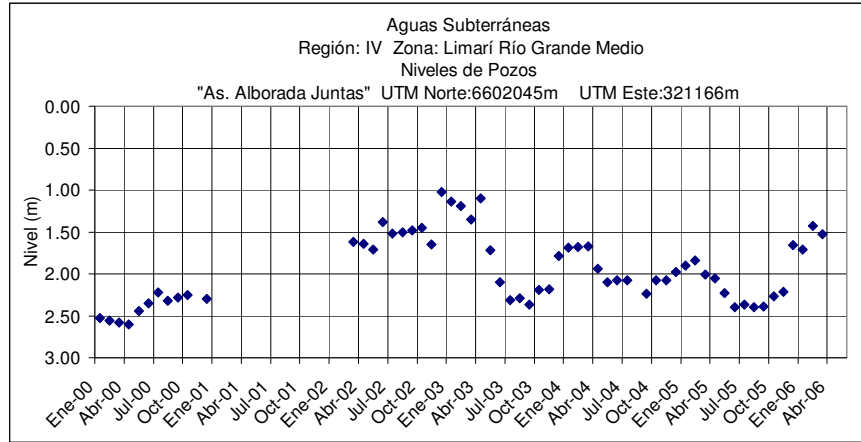
(.) Embancado



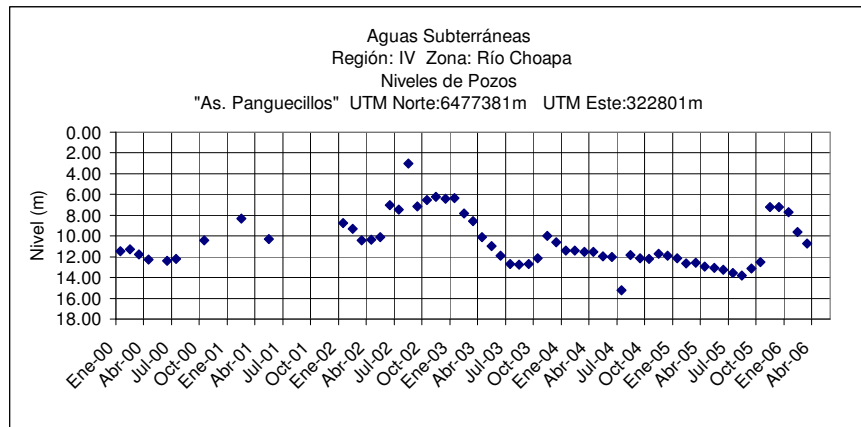
	Abr	May	Jun	Jul	Ago	Sep	Oct	Nov	Dic	Ene	Feb	Mar
2005-2006	14.02	15.28	15.26	15.17	15.87	16.29	16.56	15.45	15.03	15.37	15.07	14.97



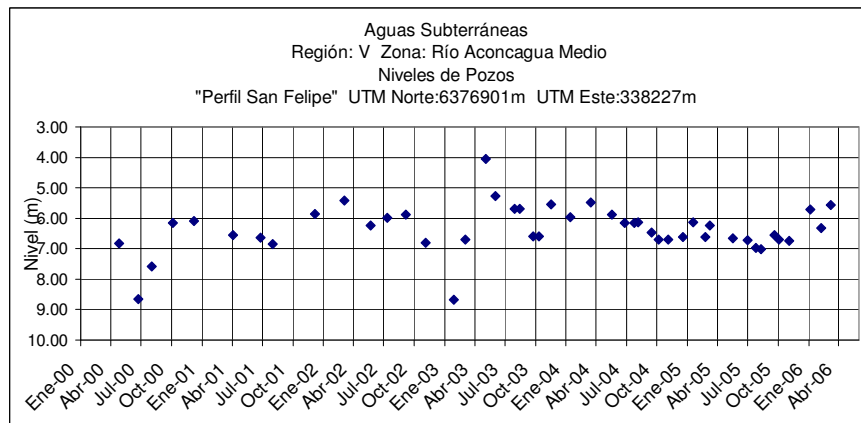
	Abr	May	Jun	Jul	Ago	Sep	Oct	Nov	Dic	Ene	Feb	Mar
2005-2006	33.68	33.64	33.66	33.46	32.56	33.10	33.06	33.05	33.10	33.23	33.36	33.04



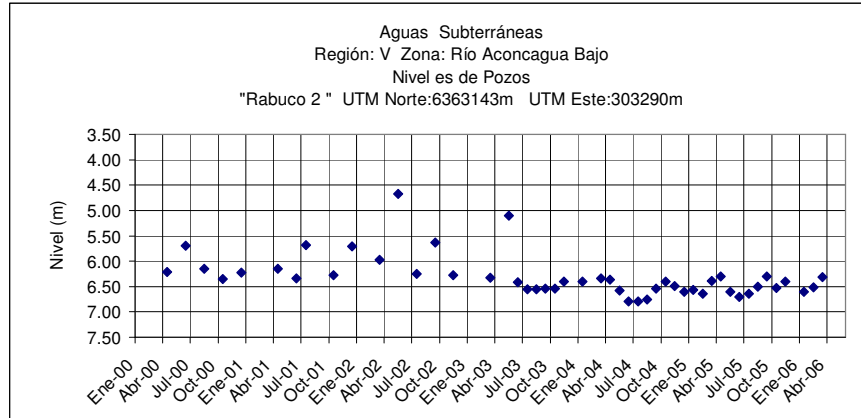
	Abr	May	Jun	Jul	Ago	Sep	Oct	Nov	Dic	Ene	Feb	Mar
2005-2006	2.05	2.23	2.40	2.37	2.40	2.39	2.27	2.21	1.66	1.71	1.43	1.53



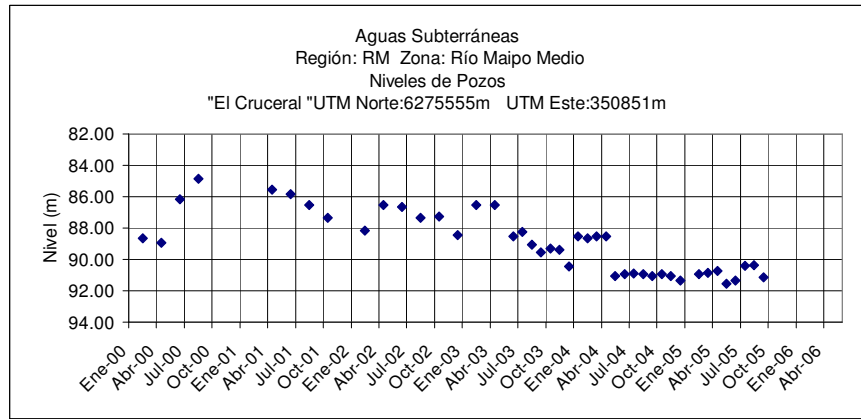
	Abr	May	Jun	Jul	Ago	Sep	Oct	Nov	Dic	Ene	Feb	Mar
2005-2006	12.96	13.08	13.27	13.55	13.78	13.16	12.49	7.24	7.21	7.68	9.61	10.72



	Abr	May	Jun	Jul	Ago	Sep	Oct	Nov	Dic	Ene	Feb	Mar
2005-2006	.	6.65	6.72	6.97	7.02	6.55	6.70	6.75	.	5.71	6.33	5.57

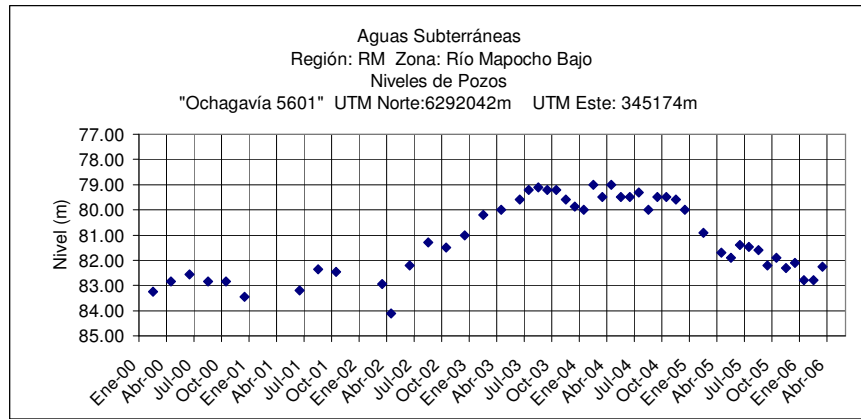


	Abr	May	Jun	Jul	Ago	Sep	Oct	Nov	Dic	Ene	Feb	Mar
2005-2006	6.30	6.61	6.70	6.64	6.50	6.30	6.53	6.40	.	6.61	6.52	6.32

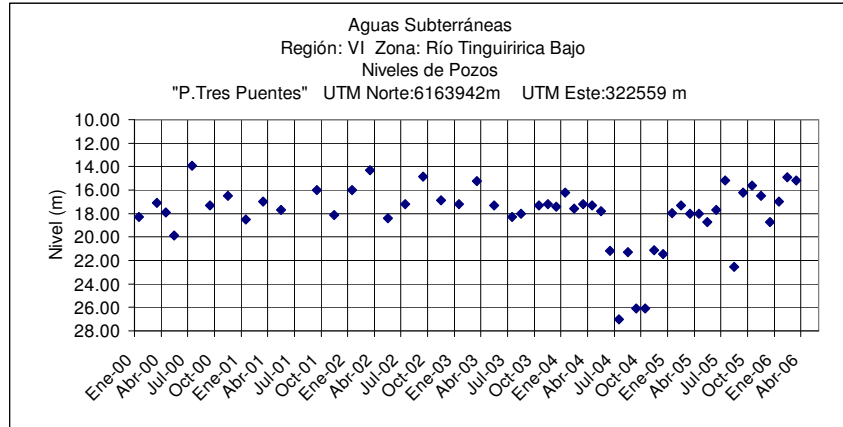


	Abr	May	Jun	Jul	Ago	Sep	Oct	Nov	Dic	Ene	Feb	Mar
2005-2006	90.75	91.55	91.35	90.40	90.35	91.15

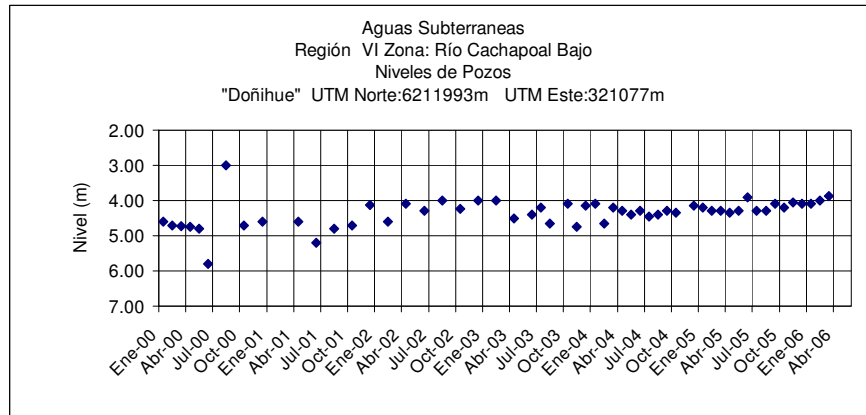
(.) Embancado



	Abr	May	Jun	Jul	Ago	Sep	Oct	Nov	Dic	Ene	Feb	Mar
2005-2006	81.70	81.90	81.40	81.47	81.60	82.20	81.90	82.30	82.10	82.80	82.80	82.25



	Abr	May	Jun	Jul	Ago	Sep	Oct	Nov	Dic	Ene	Feb	Mar
2005-2006	18.00	18.75	17.70	15.20	22.55	16.20	15.60	16.50	18.75	17.00	14.90	15.20



	Abr	May	Jun	Jul	Ago	Sep	Oct	Nov	Dic	Ene	Feb	Mar
2005-2006	4.35	4.30	3.90	4.30	4.30	4.10	4.20	4.05	4.10	4.10	4.00	3.88