

Boletín N° : 336
Mes : Abril
Año : 2006

DE : JAVIER NARBONA NARANJO
ING. JEFE DEPARTAMENTO DE HIDROLOGIA

*INFORMACION PLUVIOMETRICA, FLUVIOMETRICA,
ESTADO DE EMBALSES Y AGUAS SUBTERRANEAS*

Contenido :

- 1.- Informe pluviométrico
- 2.- Volúmenes de embalses
- 3.- Informe fluviométrico
- 4.- Informe aguas subterráneas

En Internet (www.dga.cl) se publica: .
-Los informes de este boletín
-Caudales en tiempo real

NOTA: Datos provisorios sujetos a modificaciones posteriores

INFORME PLUVIOMETRICO NACIONAL N°04

ESTACIONES	ABRIL	TOTALES AL 30 DE ABRIL			EXCESO O DÉFICIT (%)
		2006 (mm)	2005 (mm)	PROMEDIO (mm)	
CENTRAL CHAPIQUIÑA	0.0	155.5	96.5	130.2	19
EMBALSE CONCHI	0.0	33.2	23.0	15.7*	111
CALAMA	0.0	0.7	4.0	2.0	- 65
ANTOFAGASTA	0.0	0.0	0.5	0.6	-100
COPIAPÓ	0.0	0.0	1.8	0.5	-100
EMBALSE LAUTARO	0.0	0.0	15.5	2.5	-100
VALLENAR	0.0	0.0	0.0	1.7	-100
RIVADAVIA	0.0	0.0	12.0	3.9	-100
VICUÑA	0.0	0.0	3.9	3.2	-100
LA SERENA	0.0	0.0	0.9	1.5	-100
OVALLE	0.0	0.0	0.0	3.7	-100
EMBALSE PALOMA	0.0	0.0	0.0	5.0	-100
COGOTÍ 18	0.0	0.0	6.0	7.2	-100
HUINTIL	0.0	0.0	9.0	8.3	-100
COIRÓN	0.5	0.5	18.5	12.9	- 96
VILCUYA	0.0	11.0	65.0	17.4	- 37
SAN FELIPE	0.3	0.3	24.9	7.8	- 96
LAGO PEÑUELAS	5.0	5.0	19.5	27.6	- 82
EMBALSE EL YESO	6.5	16.8	78.9	40.0	- 66
CERRO CALAN	1.5	1.5	31.5	20.1	- 93
SANTIAGO (MOP)	1.7	1.9	29.3	15.5	- 88
RANCAGUA	36.0	36.0	23.2	27.0	33
SAN FERNANDO	42.1	42.1	17.7	39.1	8
CONVENTO VIEJO	41.5	43.0	20.5	44.2	- 3
CURICO	13.5	14.5	17.3	49.9	- 71
TALCA	34.5	45.8	32.8	53.2	- 14
COLORADO	65.5	106.0	26.2	107.9	- 2
LINARES	68.3	89.0	36.9	84.2	6
PARRAL	85.5	118.1	37.8	92.1	28
EMBALSE DIGUA	130.7	197.2	35.4	138.6	42
CHILLÁN	72.0	113.0	29.0	107.9	5
CONCEPCIÓN	139.3	189.5	36.6	127.7	48
LOS ÁNGELES	132.4	198.6	51.2	134.5	48
CAÑETE	188.0	321.7	113.8	173.3	86
ANGOL	119.9	170.5	66.1	112.3	52
TEMUCO	142.5	286.1	172.5	209.0	37
VALDIVIA	268.1	497.3	252.7	362.8	37
OSORNO	111.4	292.6	192.5	303.0	- 3
PUERTO MONTT	265.4	749.9	487.3	458.8	63
COYHAIQUE	138.0	387.6	308.6	302.4*	28
PUNTA ARENAS	111.1	277.9	189.7	141.4	96

Promedios acumulados para el período 1961-1990 (D.G.A)

* : Promedios calculados para períodos inferiores a 30 años

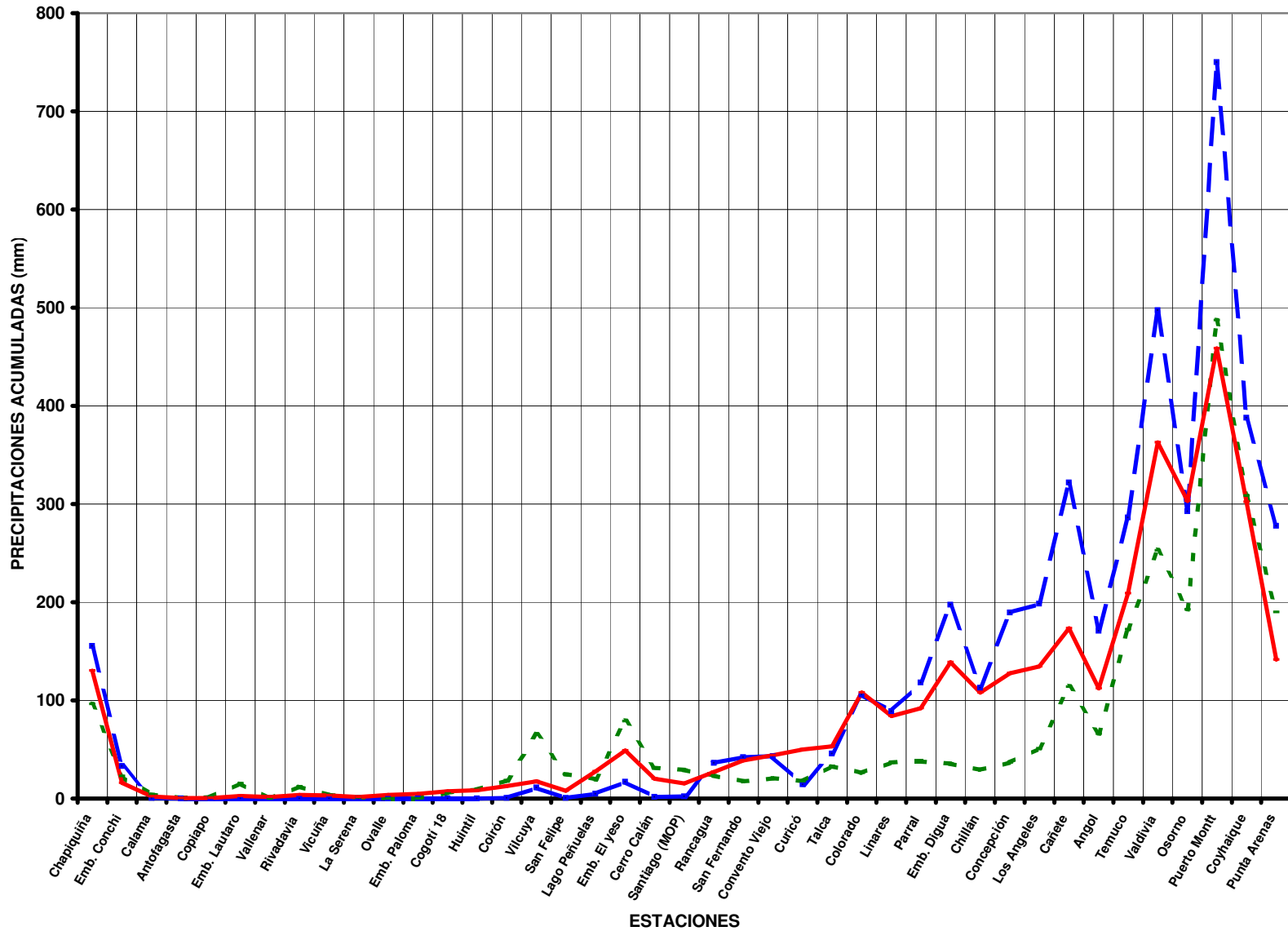
Valores expresados en milímetros (1 mm = 1 lt x m2)

TOTALES DE LLUVIA HASTA EL
30 de Abril del 2006

Normal

Año 2006

Año 2005



ESTADO DE EMBALSES

Ultimo día del mes
(Volúmenes en mill-m³)

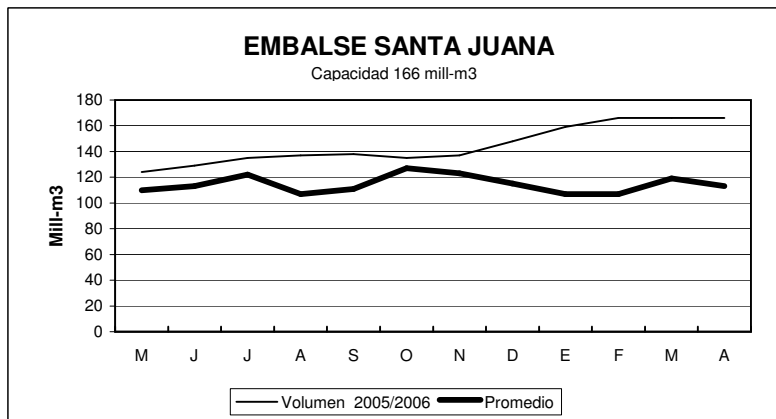
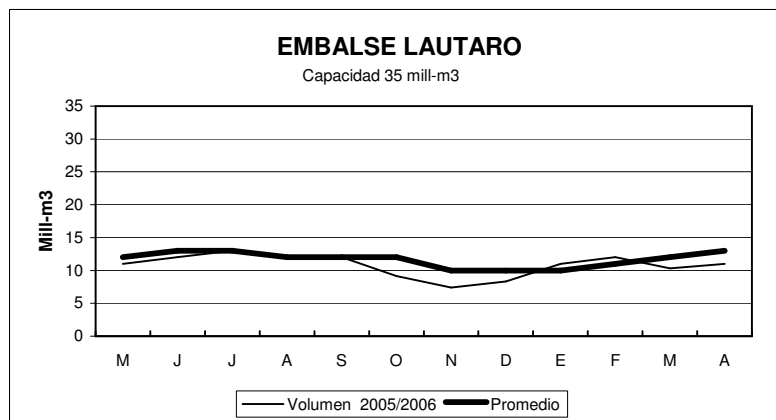
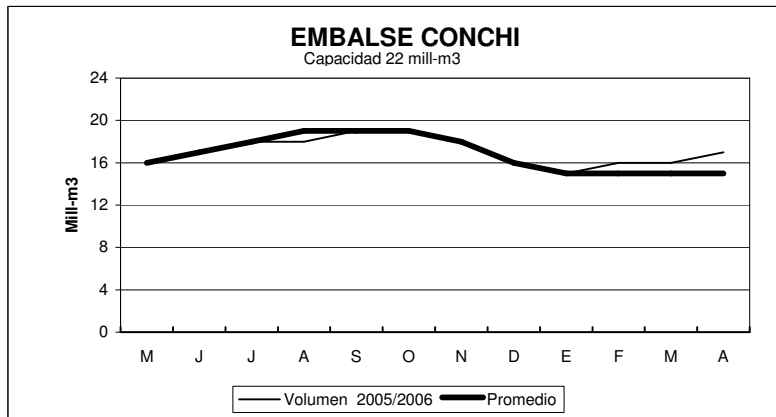
EMBALSE	REGION	CUENCA	CAPACIDAD	PROMEDIO	Abril	
				HISTORICO MENSUAL	2006	2005
Conchi	II	Loa	22	15	17	15
Lautaro	III	Copiapó	35	13	11	9
Santa Juana	III	Huasco	166	113	166	119
La Laguna	IV	Elqui	40	21	32	26
Puclaro	IV	Elqui	200	99	200	128
Recoleta	IV	Limarí	100	58	94	65
La Paloma	IV	Limarí	748	383	536	414
Cogotí	IV	Limarí	150	71	82	53
Culimo	IV	Quilimarí	10	3.0	0.1	0.0
Corrales	IV	Illapel	50	37	48	31
Peñuelas	V	Peñuelas	95	21	21	27
El Yeso	RM	Maipo	256	189	243	218
Rungue	RM	Maipo	2.2	0.0	0.2	0.1
Rapel	VI	Rapel	695	500	479	442
Colbún	VII	Maule	1544	918	905	565
Lag. Maule	VII	Maule	1420	937	1127	743
Bullileo	VII	Maule	60	2	0	0
Digua	VII	Maule	220	31	8.6	4.0
Tutuvén	VII	Maule	15	2.0	3.4	0
Coihueco	VIII	Itata	29	4	3.9	1.4
Lago Laja (&)	VIII	Bio-Bio	5582	3292	2566	1748

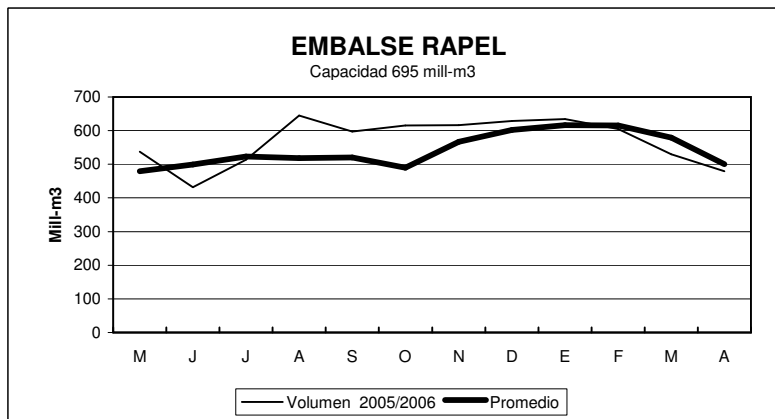
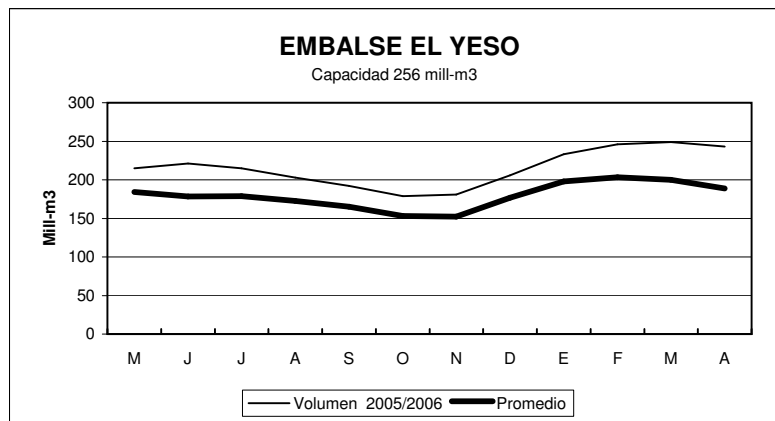
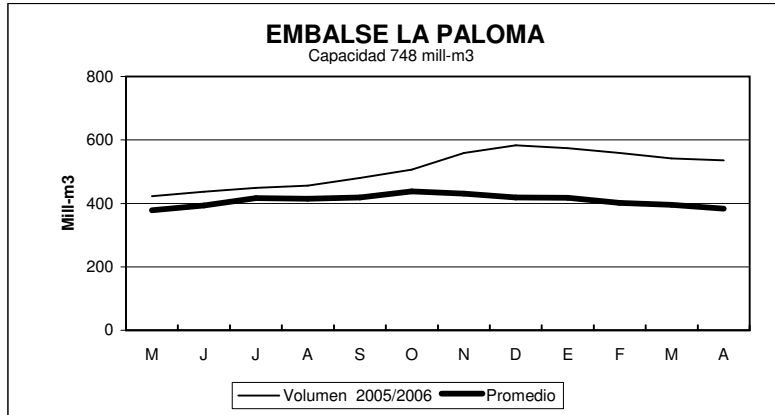
RESUMEN ANUAL

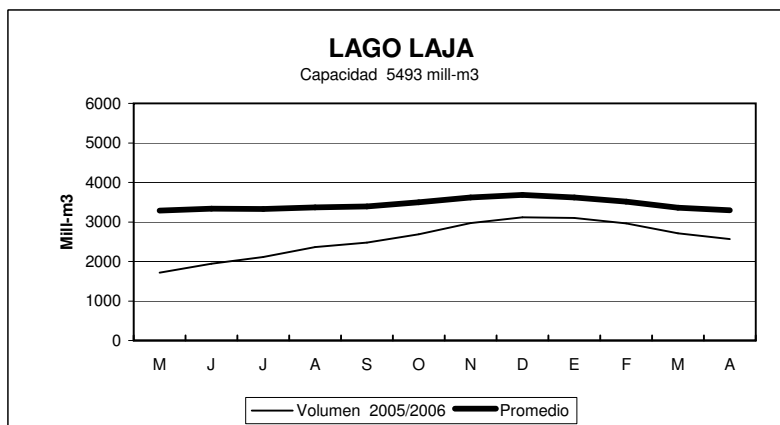
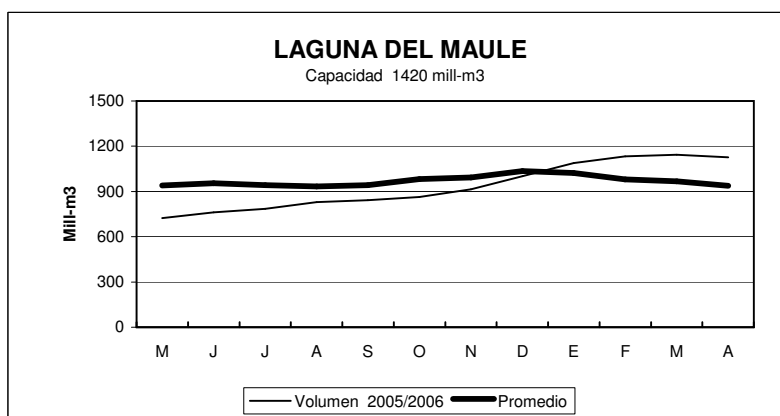
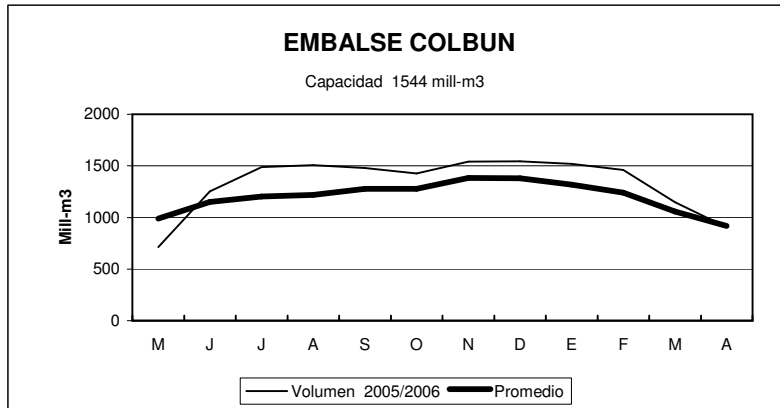
EMBALSE	2005-2006											
	M	J	J	A	S	O	N	D	E	F	M	A
Conchi	16	17	18	18	19	19	18	16	15	16	16	17
Lautaro	11	12	13	12	12	9	7	8	11	12	10	11
Santa Juana	124	129	135	137	138	135	137	148	159	166	166	166
La Laguna	25	27	29	31	32	36	37	38	36	31	28	32
Puclaro	133	137	140	140	141	142	155	189	200	200	200	200
Recoleta	69	73	75	77	80	81	86	91	91	100	92	94
La Paloma	423	437	449	456	480	506	559	583	574	559	542	536
Cogotí	54	58	61	63	73	80	100	104	98	92	86	82
Culimo	0.0	0.0	0.0	1.3	3.1	3.7	2.9	2.4	1.9	1.2	0.4	0.1
Corrales	31	32	32	37	42	43	44	46	49	49	49	48
Peñuelas	28	29	30	35	35	34	32	29	27	24	22	21
El Yeso	215	221	215	203	192	179	181	206	233	246	249	243
Rungue	0.1	0.6	1.2	2.0	2.1	2.0	1.9	2.2	1.0	0.6	0.3	0.2
Rapel	537	432	514	645	597	615	616	629	634	605	530	479
Colbún	714	1253	1488	1506	1480	1425	1542	1544	1519	1462	1148	905
Lag. Maule	723	761	786	829	843	863	914	1001	1088	1134	1144	1127
Bullileo	19	44	60	60	60	60	60	60	49	24	0	0
Digua	28	105	160	219	220	220	199	220	93	34	11	8.6
Tutuvén	3	15	13	15	13	12	12	15	6.1	4	2.0	3.4
Coihueco	1.6	13.4	24	28.3	29	29	29	28	22	14	6.6	3.9
Lago Laja (&)	1716	1943	2110	2365	2480	2690	2970	3119	3104	2966	2709	2566

(&) : Volumen sobre cota 1300 msnm

ESTADO DE EMBALSES



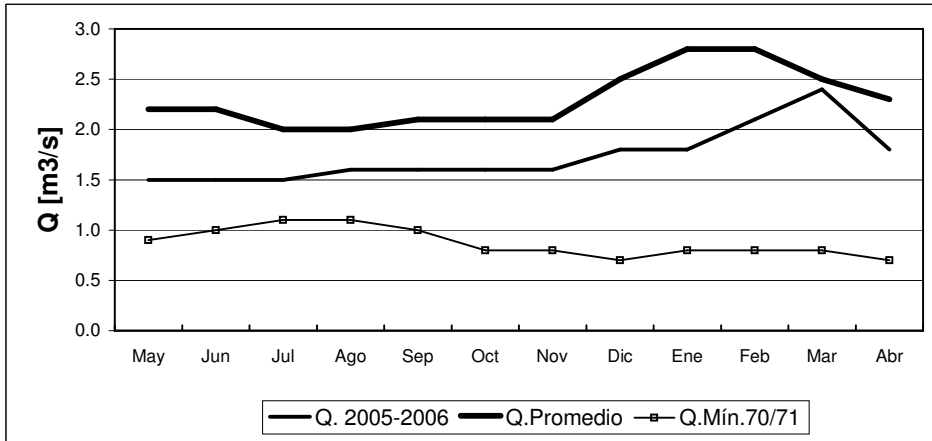




INFORME FLUVIOMETRICO
Caudales medios mensuales en m3/seg

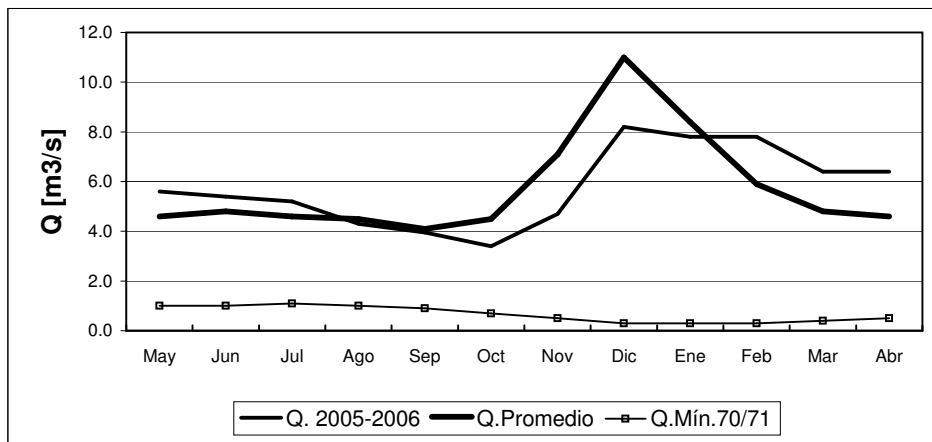
Abr-06

RIO COPIAPO EN LA PUERTA



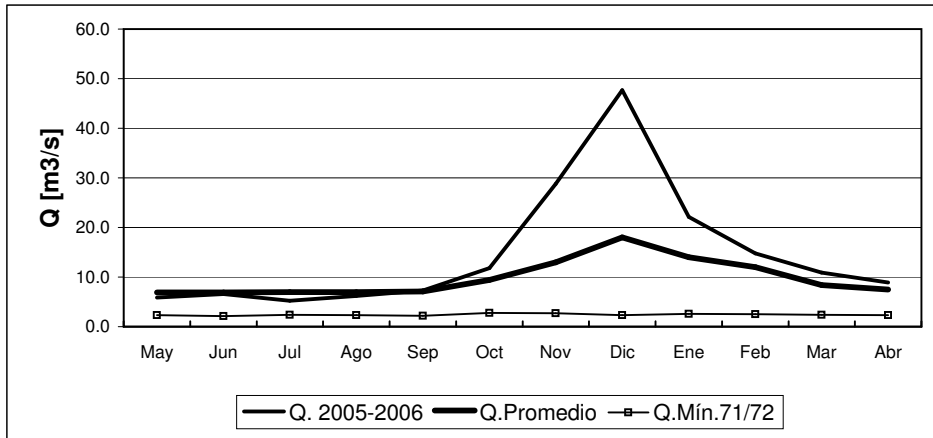
	May	Jun	Jul	Ago	Sep	Oct	Nov	Dic	Ene	Feb	Mar	Abr
Q. 2005-2006	1.5	1.5	1.5	1.6	1.6	1.6	1.6	1.8	1.8	2.1	2.4	1.8
Q. Promedio	2.2	2.2	2.0	2.0	2.1	2.1	2.1	2.5	2.8	2.8	2.5	2.3
Q. Mín.70/71	0.9	1.0	1.1	1.1	1.0	0.8	0.8	0.7	0.8	0.8	0.8	0.7

RIO HUASCO EN ALGODONES



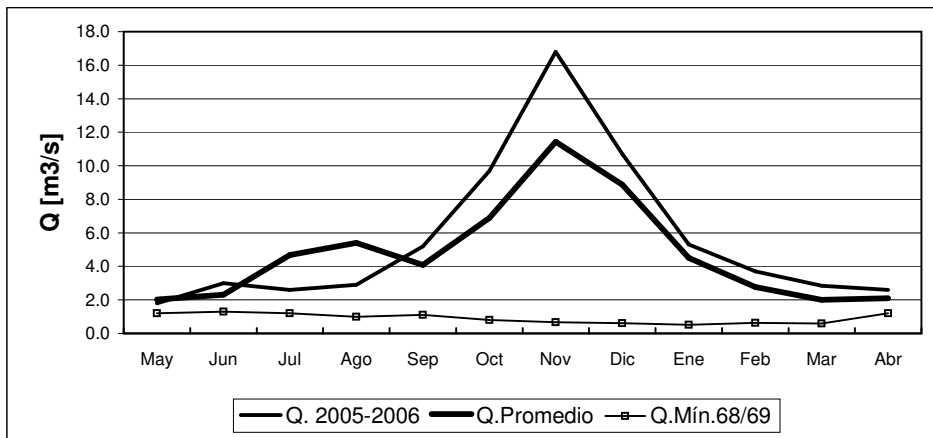
	May	Jun	Jul	Ago	Sep	Oct	Nov	Dic	Ene	Feb	Mar	Abr
Q. 2005-2006	5.6	5.4	5.2	4.3	4.0	3.4	4.7	8.2	7.8	7.8	6.4	6.4
Q. Promedio	4.6	4.8	4.6	4.5	4.1	4.5	7.1	11.0	8.4	5.9	4.8	4.6
Q. Mín.70/71	1.0	1.0	1.1	1.0	0.9	0.7	0.5	0.3	0.3	0.3	0.4	0.5

RIO ELQUI EN ALGARROBAL



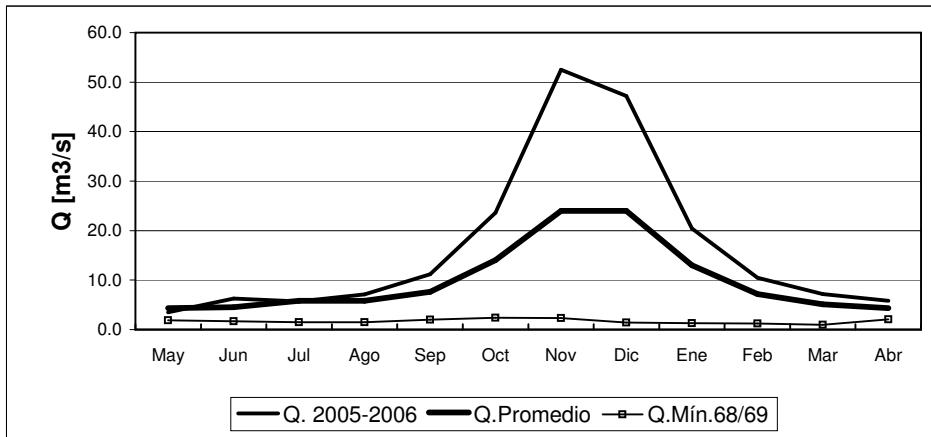
	May	Jun	Jul	Ago	Sep	Oct	Nov	Dic	Ene	Feb	Mar	Abr
Q. 2005-2006	5.9	6.6	5.2	6.2	7.3	11.8	28.8	47.7	22.1	14.8	10.9	8.9
Q. Promedio	6.9	6.9	7.0	7.0	7.1	9.4	13.0	18.0	14.0	12.0	8.4	7.5
Q. Mín. 71/72	2.3	2.1	2.4	2.3	2.2	2.8	2.7	2.3	2.6	2.5	2.4	2.3

RIO GRANDE EN LAS RAMADAS



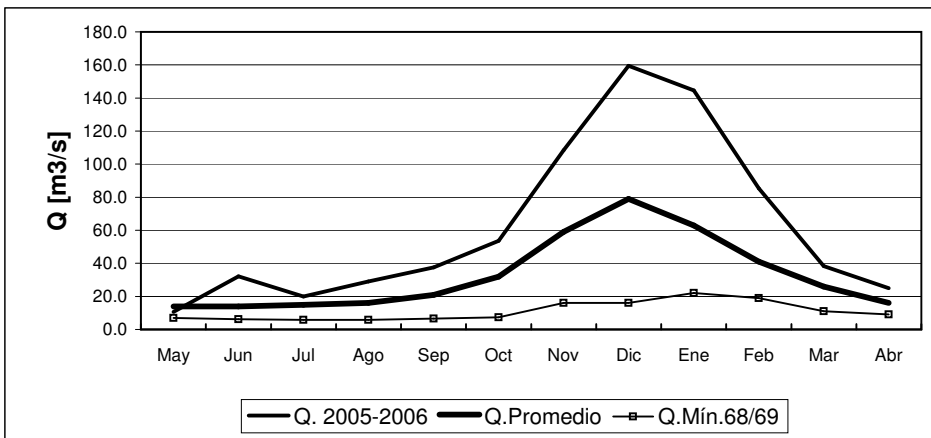
	May	Jun	Jul	Ago	Sep	Oct	Nov	Dic	Ene	Feb	Mar	Abr
Q. 2005-2006	1.8	3.0	2.6	2.9	5.2	9.7	16.8	10.7	5.3	3.7	2.9	2.6
Q. Promedio	2.0	2.3	4.7	5.4	4.1	6.9	11.4	8.9	4.5	2.8	2.0	2.1
Q. Mín. 68/69	1.2	1.3	1.2	1.0	1.1	0.8	0.7	0.6	0.5	0.6	0.6	1.2

RIO CHOAPA EN CUNCUMEN



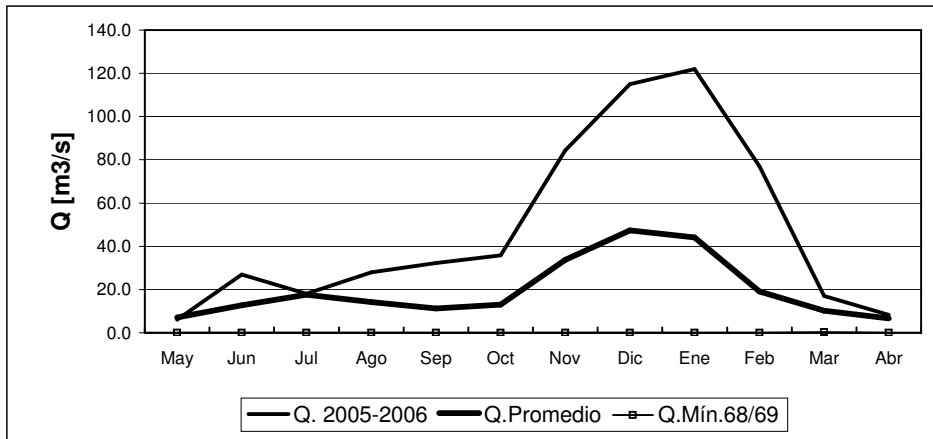
	May	Jun	Jul	Ago	Sep	Oct	Nov	Dic	Ene	Feb	Mar	Abr
Q. 2005-2006	3.5	6.3	5.7	7.1	11.2	23.6	52.5	47.2	20.4	10.5	7.2	5.8
Q.Promedio	4.3	4.5	5.8	5.8	7.6	14.0	24.0	24.0	13.0	7.2	5.1	4.3
Q.Mín.68/69	1.9	1.7	1.5	1.5	2.0	2.4	2.3	1.4	1.3	1.2	1.0	2.1

RIO ACONCAGUA EN CHACABUQUITO



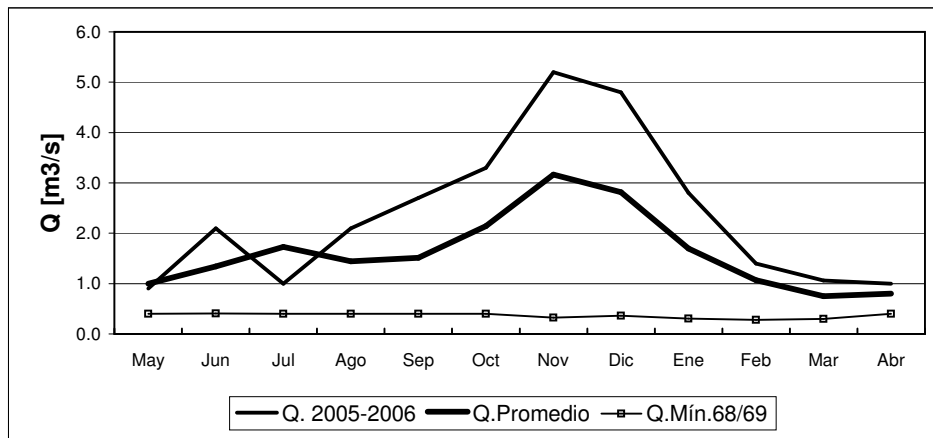
	May	Jun	Jul	Ago	Sep	Oct	Nov	Dic	Ene	Feb	Mar	Abr
Q. 2005-2006	10.6	32.2	20.0	29.1	37.5	53.7	108.4	159.5	144.6	85.3	38.3	24.9
Q.Promedio	14.0	14.0	15.0	16.0	21.0	32.0	59.0	79.0	63.0	41.0	26.0	16.0
Q.Mín.68/69	6.9	6.2	5.9	5.9	6.6	7.4	16.0	16.0	22.0	19.0	11.0	9.1

RIO ACONCAGUA EN SAN FELIPE



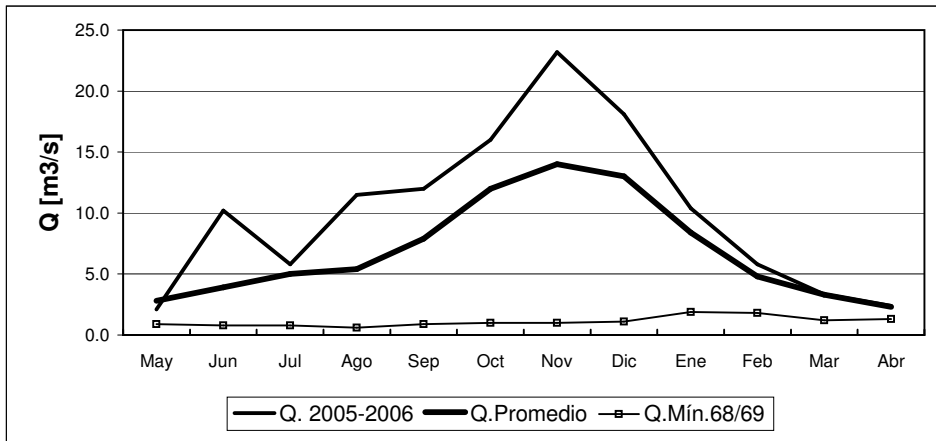
	May	Jun	Jul	Ago	Sep	Oct	Nov	Dic	Ene	Feb	Mar	Abr
Q. 2005-2006	6.0	26.9	18.0	28	32.2	35.8	84.4	115.0	122	77	17	8.3
Q. Promedio	7.1	12.7	17.6	14.2	11.3	13.0	33.8	47.3	44.1	19.1	10.2	6.7
Q. Mín.68/69	0.0	0.0	0.0	0.0	0.0	0.0	0.0	0.0	0.0	0.0	0.3	0.0

ESTERO ARRAYAN EN LA MONTOSA



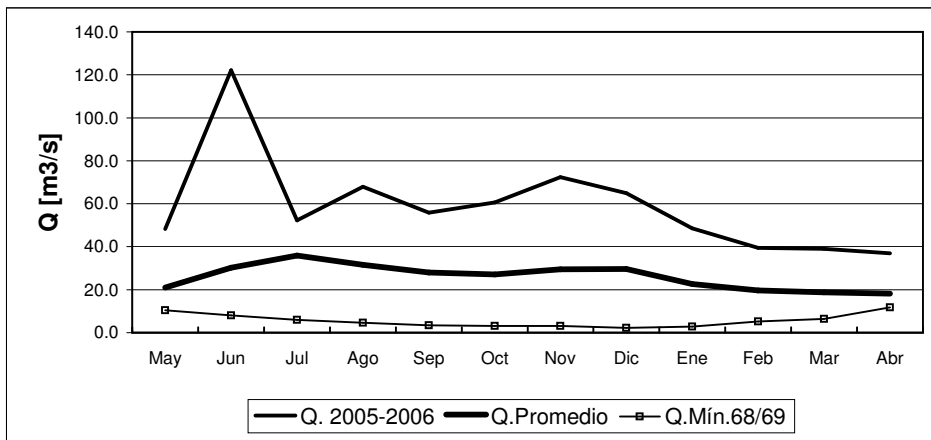
	May	Jun	Jul	Ago	Sep	Oct	Nov	Dic	Ene	Feb	Mar	Abr
Q. 2005-2006	0.9	2.1	1.0	2.1	2.7	3.3	5.2	4.8	2.8	1.4	1.1	1.0
Q. Promedio	1.0	1.3	1.7	1.4	1.5	2.1	3.2	2.8	1.7	1.1	0.8	0.8
Q. Mín.68/69	0.4	0.4	0.4	0.4	0.4	0.4	0.3	0.4	0.3	0.3	0.3	0.4

RIO MAPOCHO EN LOS ALMENDROS



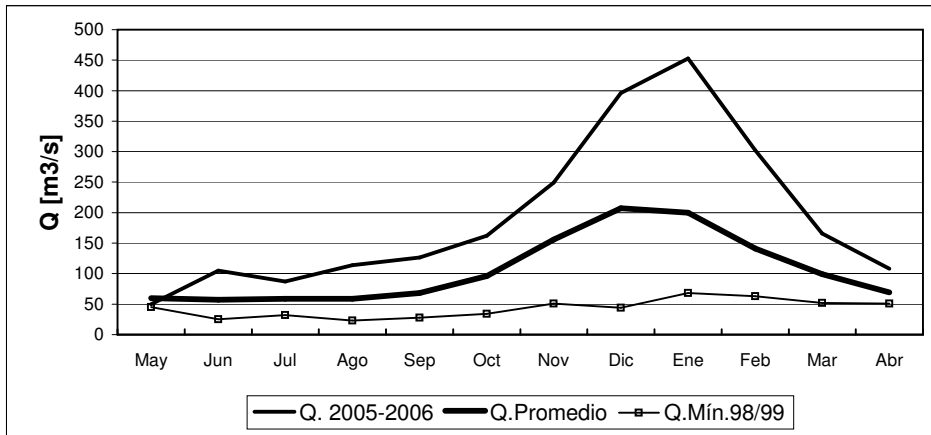
	May	Jun	Jul	Ago	Sep	Oct	Nov	Dic	Ene	Feb	Mar	Abr
Q. 2005-2006	2.1	10.2	5.8	11.5	12.0	16.0	23.2	18.1	10.4	5.8	3.3	2.4
Q. Promedio	2.8	3.9	5.0	5.4	7.9	12.0	14.0	13.0	8.4	4.8	3.3	2.3
Q. Mín. 68/69	0.9	0.8	0.8	0.6	0.9	1.0	1.0	1.1	1.9	1.8	1.2	1.3

RIO MAPOCHO EN RINCONADA DE MAIPU



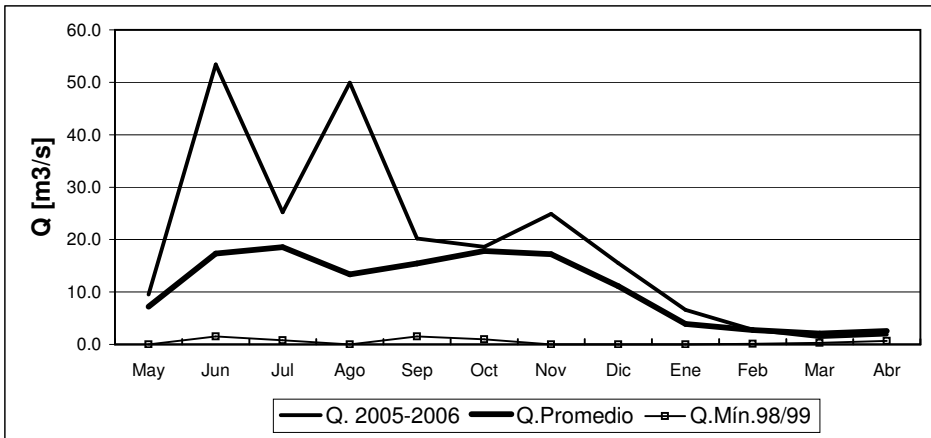
	May	Jun	Jul	Ago	Sep	Oct	Nov	Dic	Ene	Feb	Mar	Abr
Q. 2005-2006	48.2	122.1	52.3	67.9	55.9	60.6	72.4	64.9	48.6	39.5	39.0	37.0
Q. Promedio	21.0	30.3	35.9	31.6	28.0	27.1	29.5	29.7	22.6	19.6	18.7	18.1
Q. Mín. 68/69	10.4	8.1	6.0	4.6	3.4	3.2	3.1	2.2	2.9	5.3	6.5	11.8

RIO MAIPO EN EL MANZANO



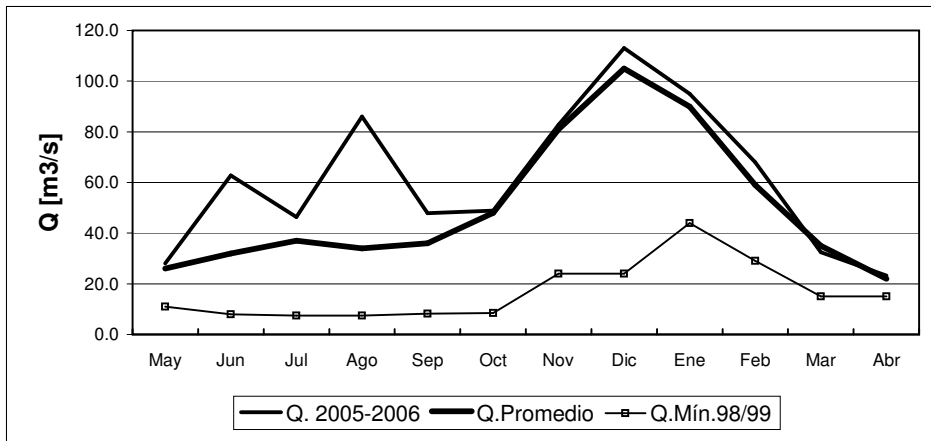
	May	Jun	Jul	Ago	Sep	Oct	Nov	Dic	Ene	Feb	Mar	Abr
Q. 2005-2006	50	105	87	114	126	162	249	396	453	302	166	108
Q. Promedio	60	57	59	59	68	96	156	207	200	141	99	69
Q. Mín. 98/99	45	25	32	23	28	34	51	44	68	63	52	51

RIO CLARO EN EL VALLE 2



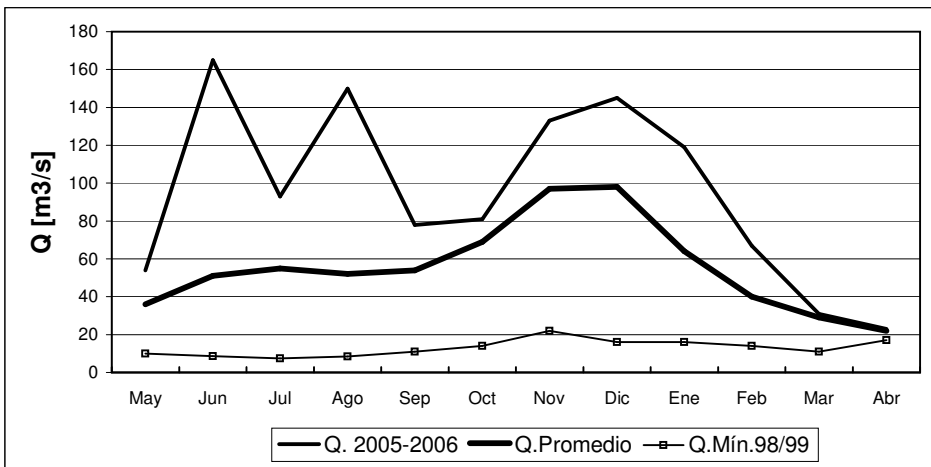
	May	Jun	Jul	Ago	Sep	Oct	Nov	Dic	Ene	Feb	Mar	Abr
Q. 2005-2006	9.5	53.4	25.2	49.9	20.2	18.6	24.9	15.5	6.6	2.8	1.4	1.9
Q. Promedio	7.2	17.3	18.6	13.4	15.5	17.9	17.2	11.1	3.9	2.7	2.1	2.6
Q. Mín. 98/99	0.0	1.5	0.8	0.0	1.5	1.0	0.0	0.0	0.0	0.1	0.3	0.7

RIO TINGUIRIRICA BAJO BRIONES



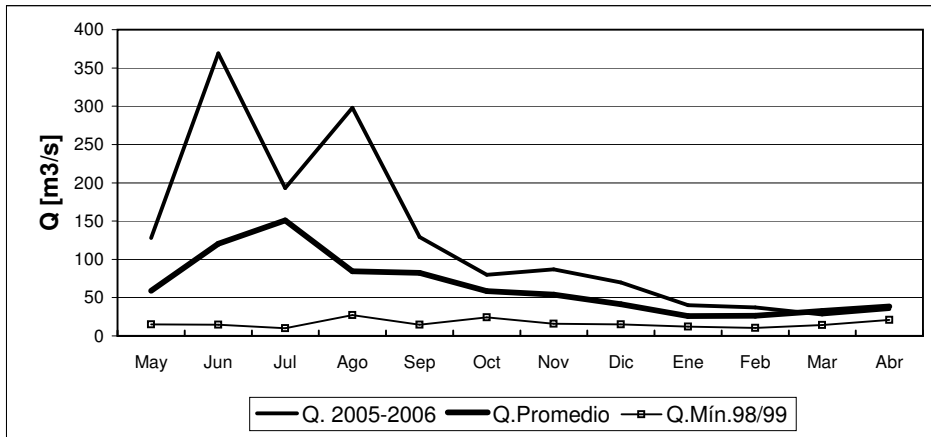
	May	Jun	Jul	Ago	Sep	Oct	Nov	Dic	Ene	Feb	Mar	Abr
Q. 2005-2006	28.1	62.8	46.3	86.0	47.9	48.9	82.8	113.0	95.0	68.0	32.5	23.2
Q. Promedio	26.0	32.0	37.0	34.0	36.0	48.0	81.0	105.0	90.0	59.0	35.0	22.0
Q. Mín. 98/99	11.0	8.0	7.4	7.4	8.2	8.5	24.0	24.0	44.0	29.0	15.0	15.0

RIO TENO DESPUES DE JUNTA



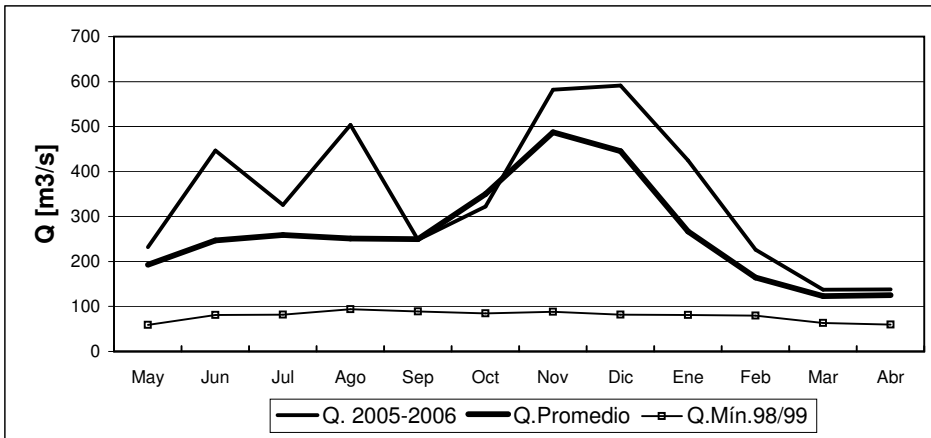
	May	Jun	Jul	Ago	Sep	Oct	Nov	Dic	Ene	Feb	Mar	Abr
Q. 2005-2006	54	165	93	150	78	81	133	145	119	67	31	23
Q. Promedio	36	51	55	52	54	69	97	98	64	40	29	22
Q. Mín. 98/99	10	8.6	7.4	8.4	11	14	22	16	16	14	11	17

RIO CLARO EN RAUQUEN



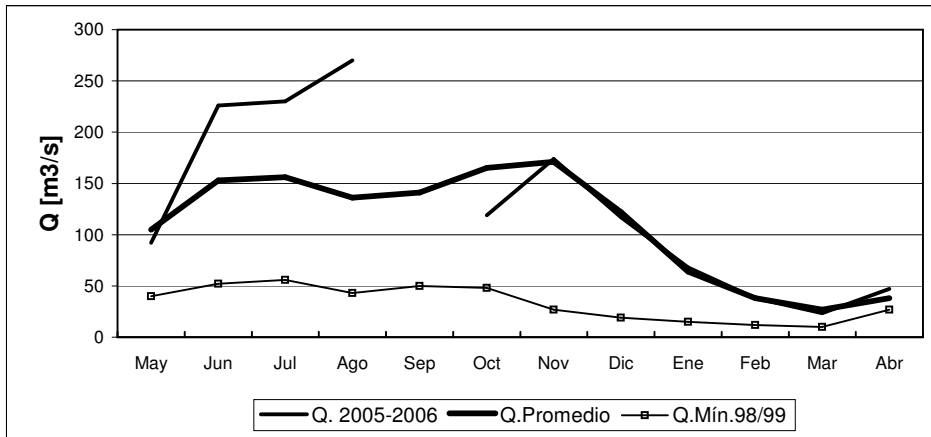
	May	Jun	Jul	Ago	Sep	Oct	Nov	Dic	Ene	Feb	Mar	Abr
Q. 2005-2006	128	369	193	298	129	80	87	70	40	37	28	35
Q. Promedio	59	121	151	84	82	58	54	41	26	26	33	39
Q. Mín.98/99	15	15	10	27	15	24	16	15	12	10	14	21

RIO MAULE EN ARMERILLO



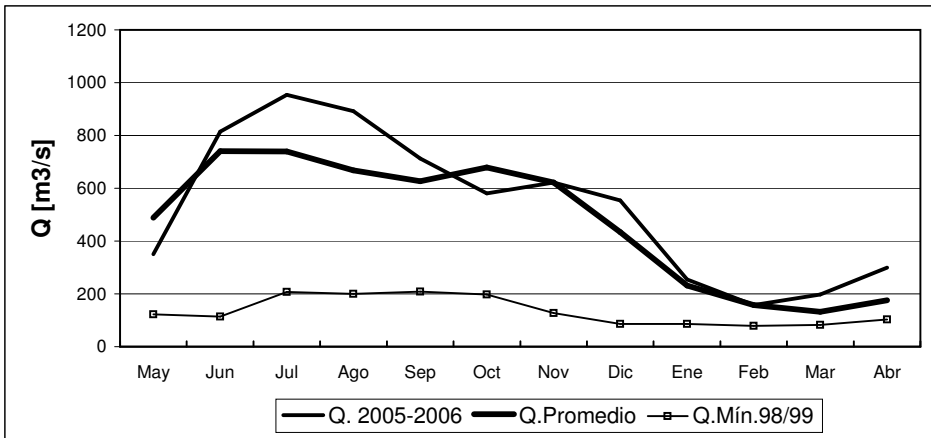
	May	Jun	Jul	Ago	Sep	Oct	Nov	Dic	Ene	Feb	Mar	Abr
Q. 2005-2006	232	447	326	504	248	322	582	591	425	226	137	138
Q. Promedio	193	247	259	251	250	350	487	445	267	164	123	125
Q. Mín.98/99	59	81	82	94	89	85	88	82	81	80	63	60

RIO ÑUBLE EN SAN FABIAN



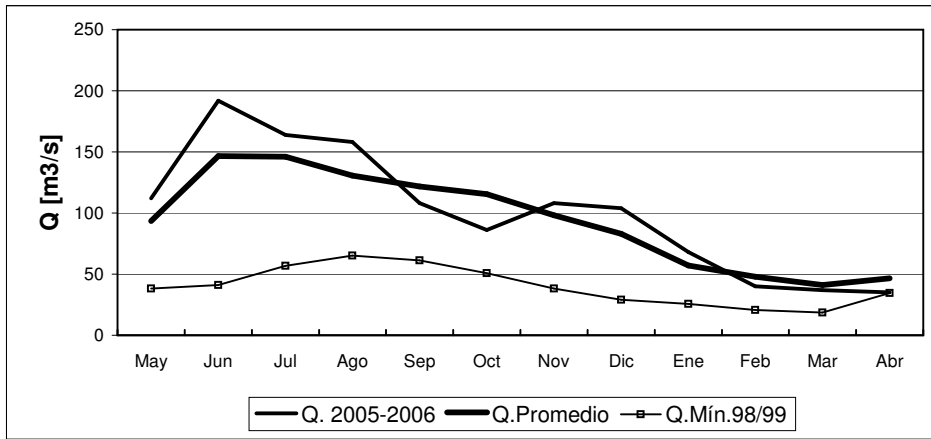
	May	Jun	Jul	Ago	Sep	Oct	Nov	Dic	Ene	Feb	Mar	Abr
Q. 2005-2006	92	226	230	270		119	174	117	68	38	23	47
Q. Promedio	105	153	156	136	141	165	171	122	64	38	27	38
Q. Mín.98/99	40	52	56	43	50	48	27	19	15	12	10	27

RIO BIO-BIO EN RUCALHUE



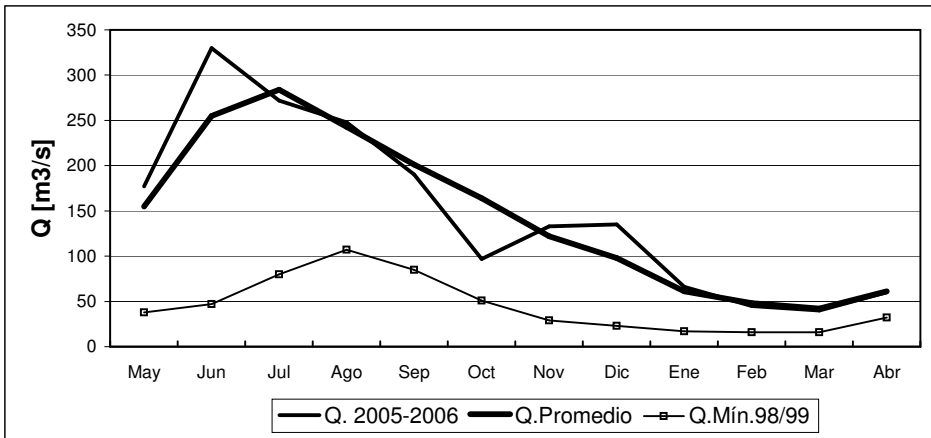
	May	Jun	Jul	Ago	Sep	Oct	Nov	Dic	Ene	Feb	Mar	Abr
Q. 2005-2006	350	815	954	892	713	581	622	554	255	157	198	300
Q. Promedio	489	741	740	668	627	679	622	434	231	158	132	176
Q. Mín.98/99	122	114	207	200	208	197	127	86	86	79	82	103

RIO CAUTIN EN RARI-RUCA



	May	Jun	Jul	Ago	Sep	Oct	Nov	Dic	Ene	Feb	Mar	Abr
Q. 2005-2006	112	192	164	158	108	86	108	104	68	40	37	35
Q.Promedio	93	147	146	131	122	116	98	83	57	48	41	47
Q.Mín.98/99	38	41	57	65	61	51	38	29	26	21	19	35

RIO CAUTIN EN CAJON

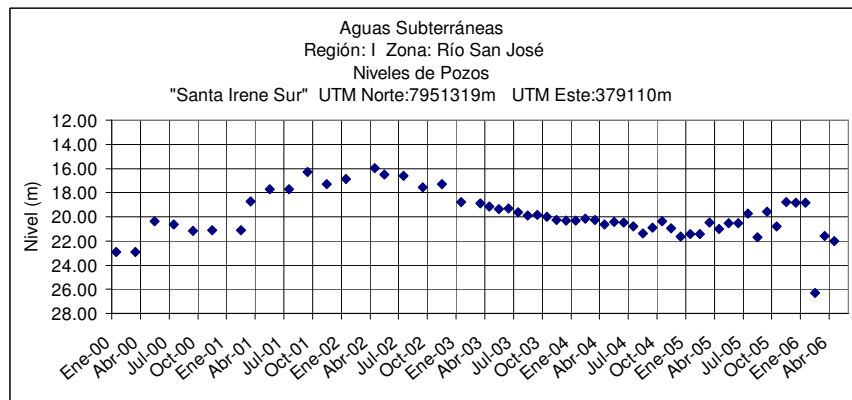


	May	Jun	Jul	Ago	Sep	Oct	Nov	Dic	Ene	Feb	Mar	Abr
Q. 2005-2006	177	330	272	248	190	97	133	135	66	45	40	60
Q.Promedio	155	255	284	243	201	164	122	98	61	48	42	61
Q.Mín.98/99	38	47	80	107	85	51	29	23	17	16	16	32

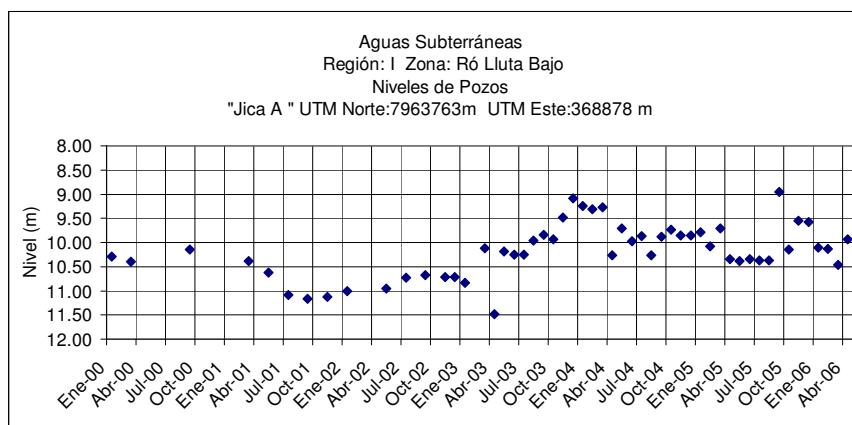
Informe de Aguas Subterráneas

Niveles de Pozos en metros

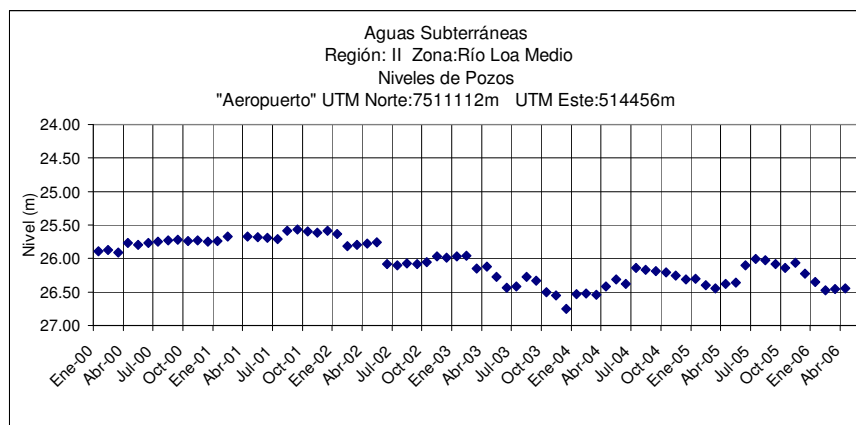
*Gráficos de últimos cinco años.



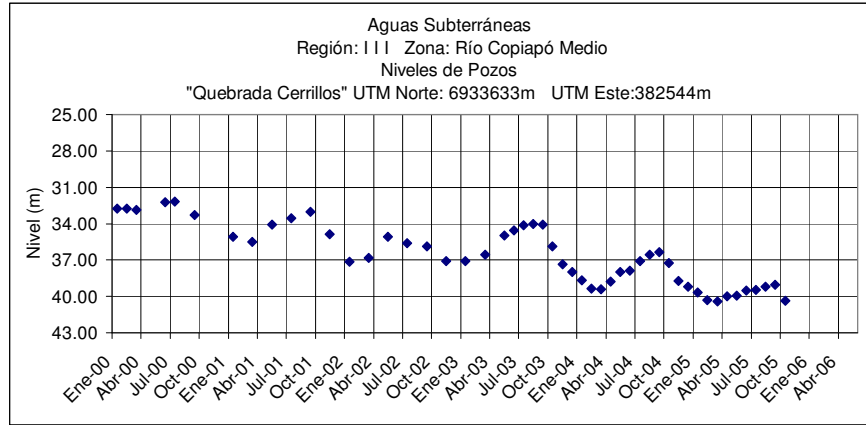
	May	Jun	Jul	Ago	Sep	Oct	Nov	Dic	Ene	Feb	Mar	Abr
2005-2006	20.52	20.54	19.75	21.67	19.60	20.82	18.78	18.86	18.84	26.30	21.59	22.01



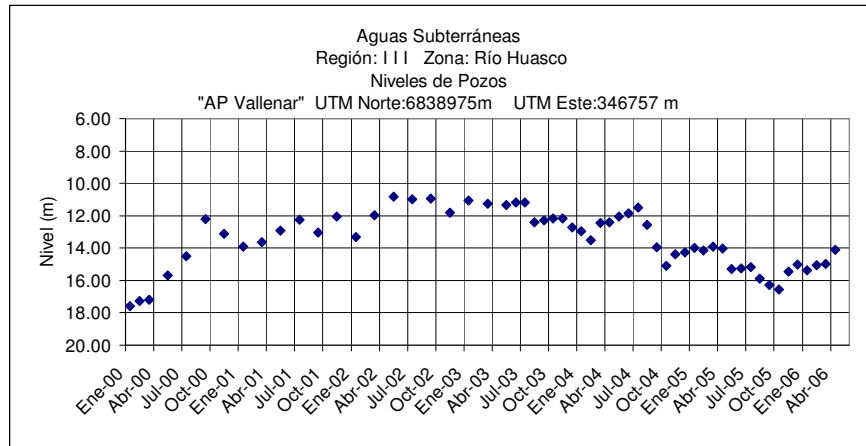
	May	Jun	Jul	Ago	Sep	Oct	Nov	Dic	Ene	Feb	Mar	Abr
2005-2006	10.39	10.35	10.37	10.37	8.95	10.15	9.55	9.58	10.11	10.13	10.46	9.94



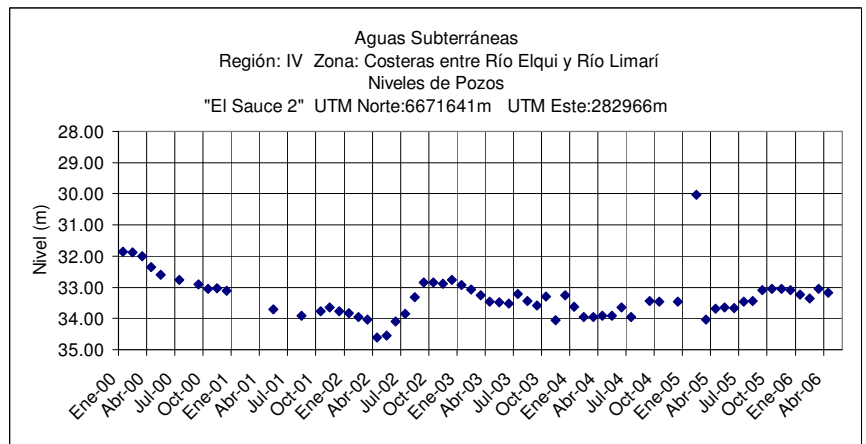
	May	Jun	Jul	Ago	Sep	Oct	Nov	Dic	Ene	Feb	Mar	Abr
2005-2006	26.36	26.10	26.01	26.03	26.08	26.14	26.06	26.23	26.35	26.47	26.46	26.45



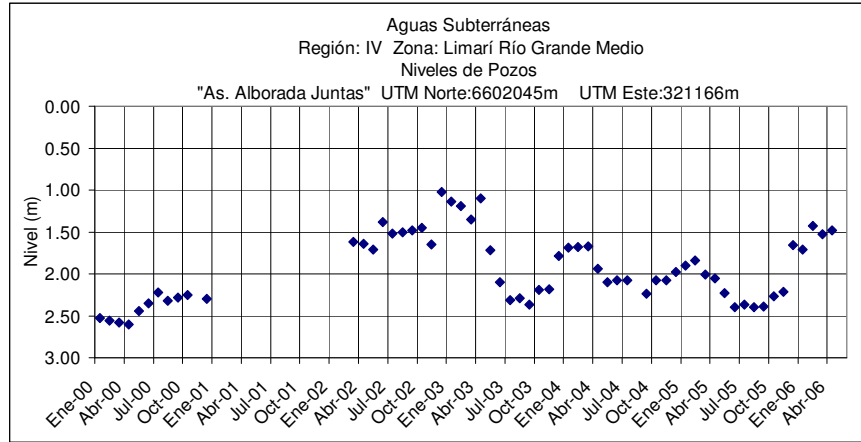
	May	Jun	Jul	Ago	Sep	Oct	Nov	Dic	Ene	Feb	Mar	Abr
2005-2006	39.92	39.51	39.46	39.19	39.06	40.36	Seco	Seco	Seco	Seco	Seco	Seco



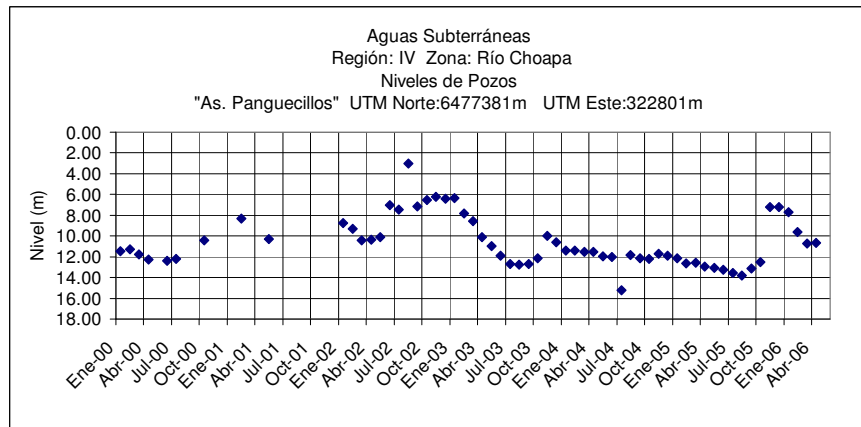
	May	Jun	Jul	Ago	Sep	Oct	Nov	Dic	Ene	Feb	Mar	Abr
2005-2006	15.28	15.26	15.17	15.87	16.29	16.56	15.45	15.03	15.37	15.07	14.97	14.09



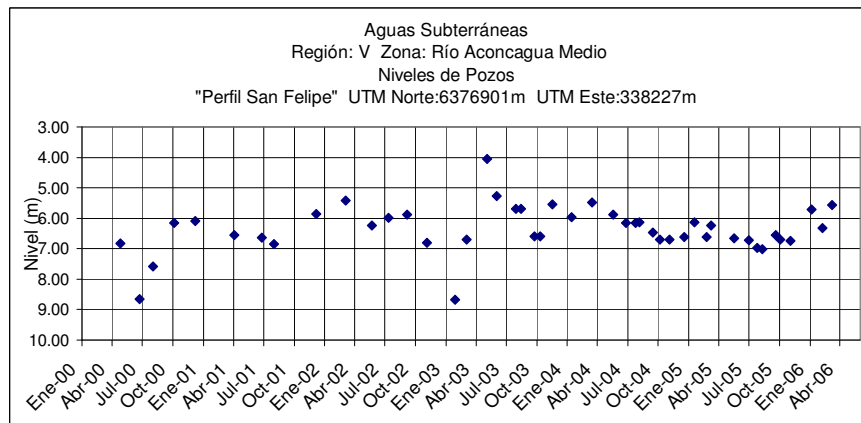
	May	Jun	Jul	Ago	Sep	Oct	Nov	Dic	Ene	Feb	Mar	Abr
2005-2006	33.64	33.66	33.46	32.56	33.10	33.06	33.05	33.10	33.23	33.36	33.04	33.18



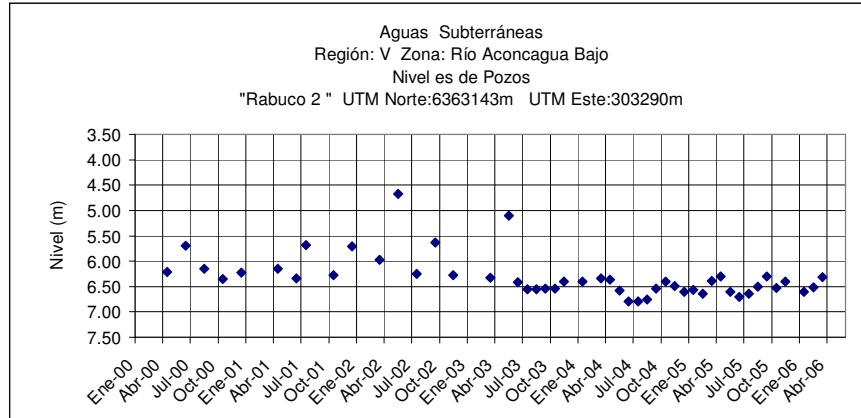
Year	May	Jun	Jul	Ago	Sep	Oct	Nov	Dic	Ene	Feb	Mar	Abr
2005-2006	2.23	2.40	2.37	2.40	2.39	2.27	2.21	1.66	1.71	1.43	1.53	1.48



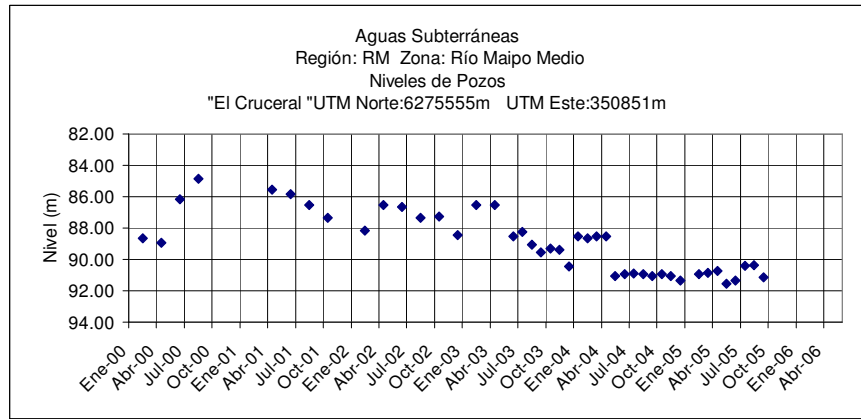
Year	May	Jun	Jul	Ago	Sep	Oct	Nov	Dic	Ene	Feb	Mar	Abr
2005-2006	13.08	13.27	13.55	13.78	13.16	12.49	7.24	7.21	7.68	9.61	10.72	10.68



Year	May	Jun	Jul	Ago	Sep	Oct	Nov	Dic	Ene	Feb	Mar	Abr
2005-2006	6.65	6.72	6.97	7.02	6.55	6.70	6.75	.	5.71	6.33	5.57	

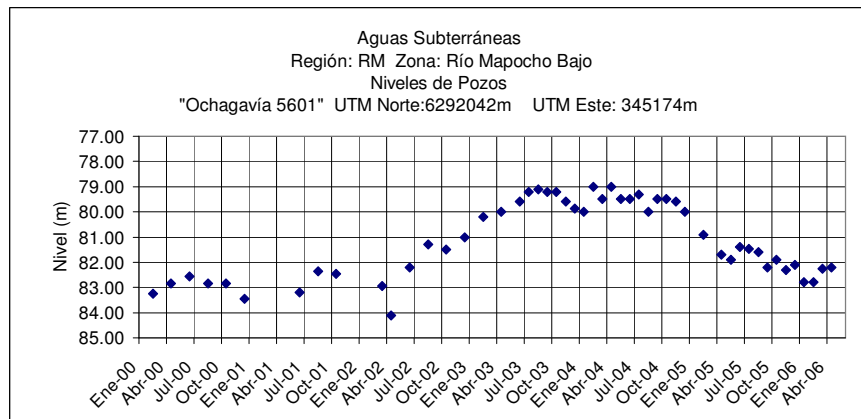


	May	Jun	Jul	Ago	Sep	Oct	Nov	Dic	Ene	Feb	Mar	Abr
2005-2006	6.61	6.70	6.64	6.50	6.30	6.53	6.40	.	6.61	6.52	6.32	

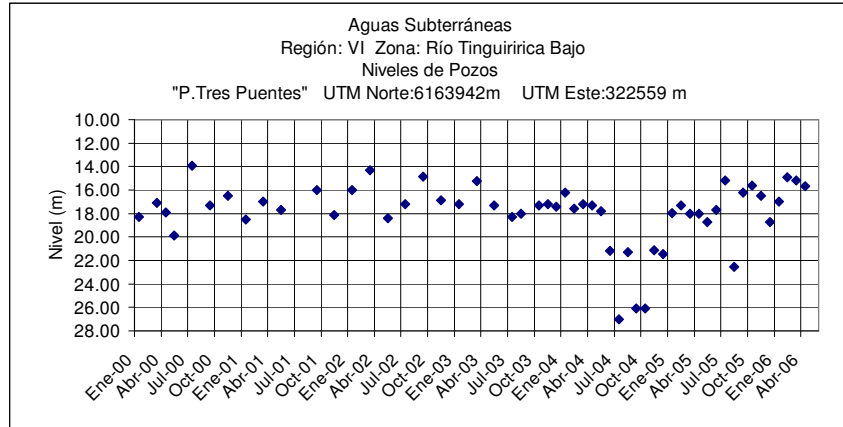


	May	Jun	Jul	Ago	Sep	Oct	Nov	Dic	Ene	Feb	Mar	Abr
2005-2006	91.55	91.35	90.40	90.35	91.15

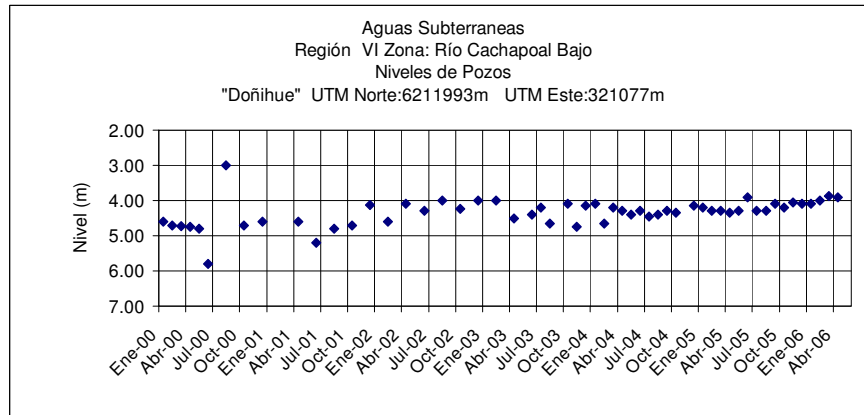
(.) Embancado



	May	Jun	Jul	Ago	Sep	Oct	Nov	Dic	Ene	Feb	Mar	Abr
2005-2006	81.90	81.40	81.47	81.60	82.20	81.90	82.30	82.10	82.80	82.80	82.25	82.20



	May	Jun	Jul	Ago	Sep	Oct	Nov	Dic	Ene	Feb	Mar	Abr
2005-2006	18.75	17.70	15.20	22.55	16.20	15.60	16.50	18.75	17.00	14.90	15.20	15.70



	May	Jun	Jul	Ago	Sep	Oct	Nov	Dic	Ene	Feb	Mar	Abr
2005-2006	4.30	3.90	4.30	4.30	4.10	4.20	4.05	4.10	4.10	4.00	3.88	3.90