

MINISTERIO DE OBRAS PUBLICAS
DIRECCION GENERAL DE AGUAS

Boletín N° : 349
Mes : Mayo
Año : 2007

DE : JAVIER NARBONA NARANJO
ING. JEFE DEPARTAMENTO DE HIDROLOGIA

*INFORMACION PLUVIOMETRICA, FLUVIOMETRICA,
ESTADO DE EMBALSES Y AGUAS SUBTERRANEAS*

Contenido :

- 1.- Informe pluviométrico
- 2.- Volúmenes de embalses
- 3.- Informe fluviométrico
- 4.- Informe aguas subterráneas

En Internet (www.dga.cl) se publica: .
-Los informes de este boletín
-Caudales en tiempo real

NOTA: Datos provisorios sujetos a modificaciones posteriores

INFORME PLUVIOMETRICO NACIONAL N°05

ESTACIONES	MAYO	TOTALES AL 31 DE MAYO			EXCESO O DÉFICIT (%)
		2007 (mm)	2006 (mm)	PROMEDIO (mm)	
CENTRAL CHAPIQUIÑA	0 0	76.1	155.5	130.7*	- 42
EMBALSE CONCHI	0.0	3.0	33.2	16.1*	- 81
CALAMA	0.0	0.0	0.7	2.0	-100
ANTOFAGASTA	0.0	0.0	0.0	0.7	-100
COPIAPÓ	0.0	0.0	0.0	1.1	-100
EMBALSE LAUTARO	5.0	5.0	1.0	5.0	0
VALLENAR	0.4	1.4	0.0	4.2	- 67
RIVADAVIA	0.0	0.0	1.5	10.1	-100
VICUÑA	0.0	0.0	0.0	11.3	-100
LA SERENA	0.0	0.0	0.9	7.2	-100
OVALLE	0.0	0.0	0.5	12.0	-100
EMBALSE PALOMA	0.0	0.0	0.3	17.1	-100
COGOTÍ 18	0.5	0.5	0.5	25.2	- 98
HUINTIL	3.0	3.0	0.0	31.6	- 91
COIRÓN	0.0	0.0	0.5	45.6	-100
VILCUYA	5.0	15.0	17.5	55.9	- 73
SAN FELIPE	1.4	7.8	5.5	34.5	- 77
LAGO PEÑUELAS	19.5	42.5	48.0	111.8	- 62
EMBALSE EL YESO	27.5	55.0	32.8	123.1	- 55
CERRO CALÁN	9.9	44.3	5.6	64.6	- 31
SANTIAGO (MOP)	12.7	37.9	8.8	57.5	- 34
RANCAGUA	19.5	59.8	67.0	90.2	- 34
SAN FERNANDO	32.1	83.2	99.8	144.5	- 42
CONVENTO VIEJO	31.0	78.0	91.0	150.9	- 48
CURICO	26.7	73.6	44.7	155.4	- 53
TALCA	12.3	91.1	88.1	164.5	- 45
COLORADO	38.3	141.9	221.0	340.2	- 58
LINARES	23.0	161.6	156.0	239.5	- 33
PARRAL	29.3	159.3	258.1	257.2	- 38
EMBALSE DIGUA	37.2	250.0	341.3	386.7	- 35
CHILLÁN	61.3	166.1	189.0	275.4	- 40
CONCEPCIÓN	63.0	302.4	306.1	317.1	- 5
LOS ÁNGELES	50.8	252.7	344.3	329.2	- 23
CAÑETE	63.0	290.4	524.6	354.8	- 18
ANGOL	59.1	307.7	378.4	299.4	3
TEMUCO	79.0	310.1	409.8	384.1	- 19
VALDIVIA	69.6	364.6	661.5	713.8	- 49
OSORNO	62.4	252.3	435.7	544.4	- 54
PUERTO MONTT	92.5	395.1	970.3	711.5	- 44
COYHAIQUE	43.2	229.5	472.2	492.0	- 53
PUNTA ARENAS	42.8	293.1	316.7	188.8	55

Promedios acumulados para el período 1961-1990 (D.G.A)

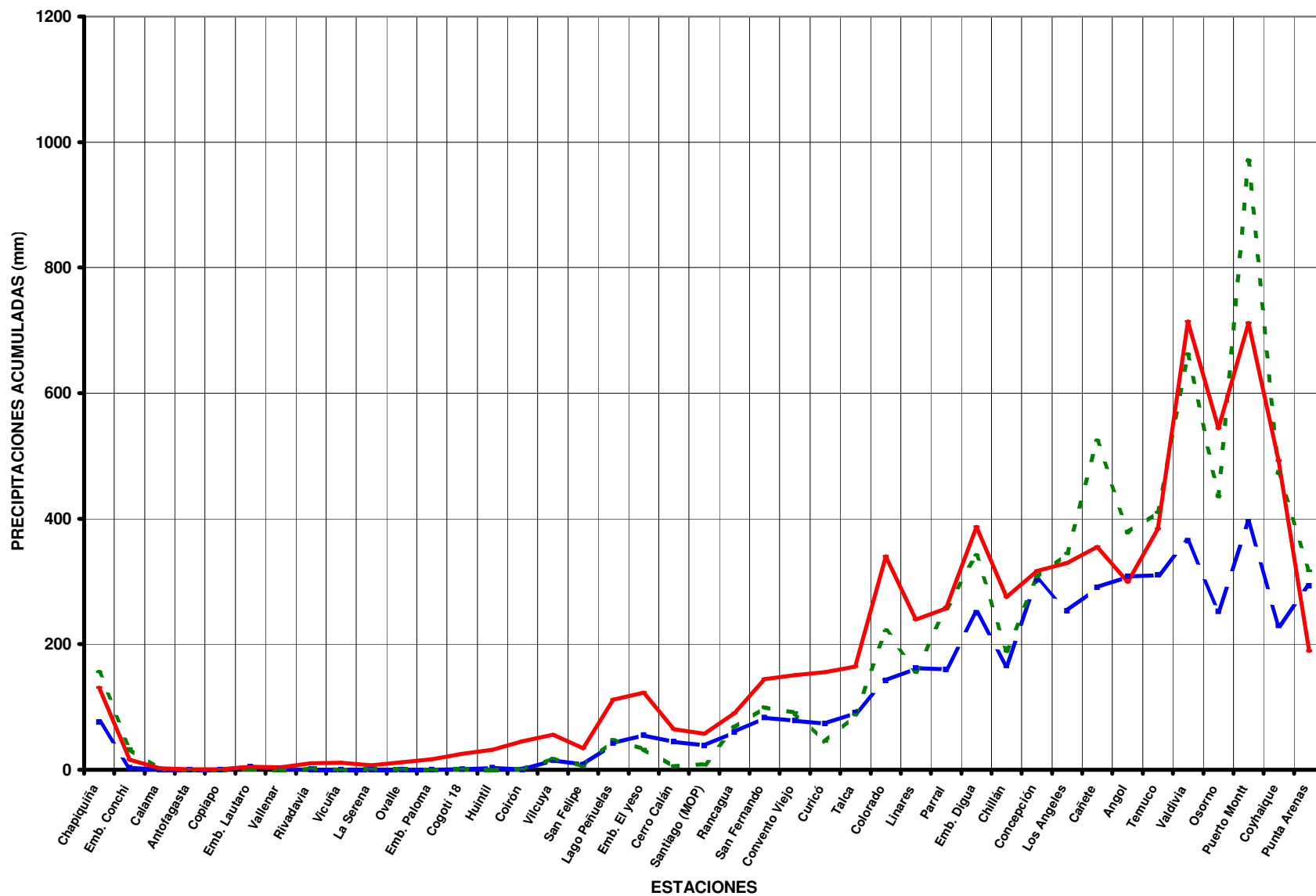
* : Promedios calculados para períodos inferiores a 30 años
Valores expresados en milímetros (1 mm = 1 lt x m2)

TOTALES DE LLUVIA HASTA EL
31 de Mayo de 2007

Normal

Año 2007

Año 2006



ESTADO DE EMBALSES

Ultimo día del mes
(Volúmenes en mill-m³)

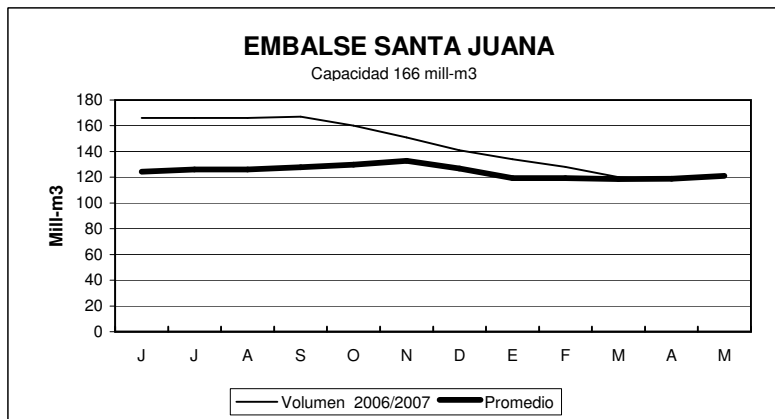
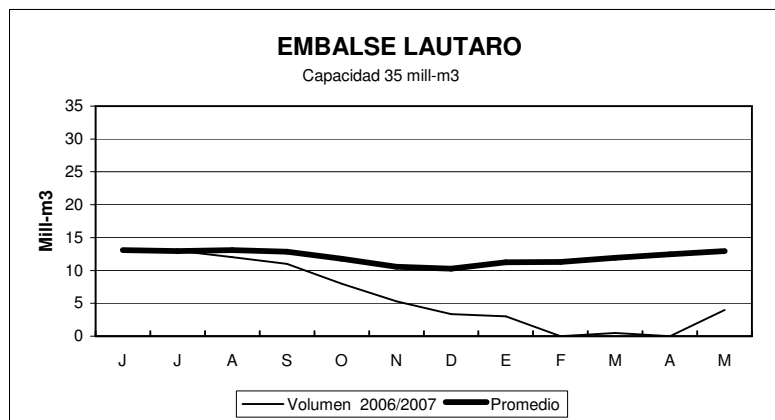
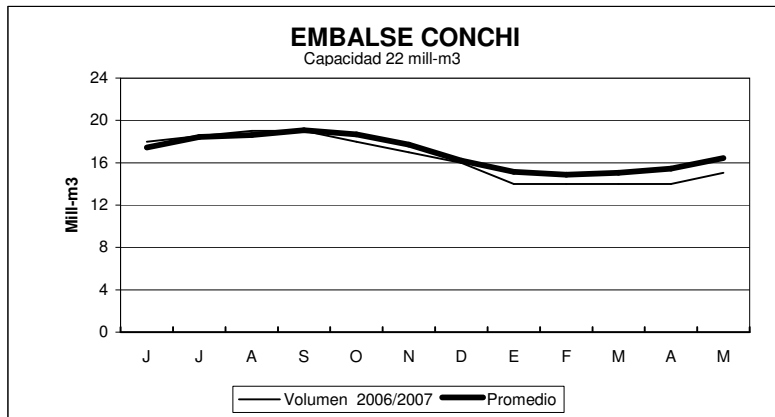
EMBALSE	REGION	CUENCA	CAPACIDAD	PROMEDIO	Mayo	
				HISTORICO MENSUAL	2007	2006
Conchi	II	Loa	22	16	15	17
Lautaro	III	Copiapó	35	13	4.0	12
Santa Juana	III	Huasco	166	121	121	166
La Laguna	IV	Elqui	40	21	32	34
Puclaro	IV	Elqui	200	119	187	200
Recoleta	IV	Limarí	100	61	68	95
La Paloma	IV	Limarí	748	389	447	539
Cogotí	IV	Limarí	150	69	41	79
Culimo	IV	Quilimarí	10	2.7	0.0	0.4
Corrales	IV	Illapel	50	39	40	48
Peñuelas	V	Peñuelas	95	22	16	20
El Yeso	RM	Maipo	256	188	195	241
Rungue	RM	Maipo	2.2	0.3	0.3	0.2
Rapel	VI	Rapel	695	479	413	511
Colbún	VII	Maule	1544	927	389	654
Lag. Maule	VII	Maule	1420	950	1285	1115
Bullileo	VII	Maule	60	13	2.12	7
Digua	VII	Maule	220	54	6.0	2.7
Tutuvén	VII	Maule	15	3.6	2.8	3.0
Coihueco	VIII	Itata	29	5	1.8	6
Lago Laja (&)	VIII	Bio-Bio	5582	3257	2492	2365

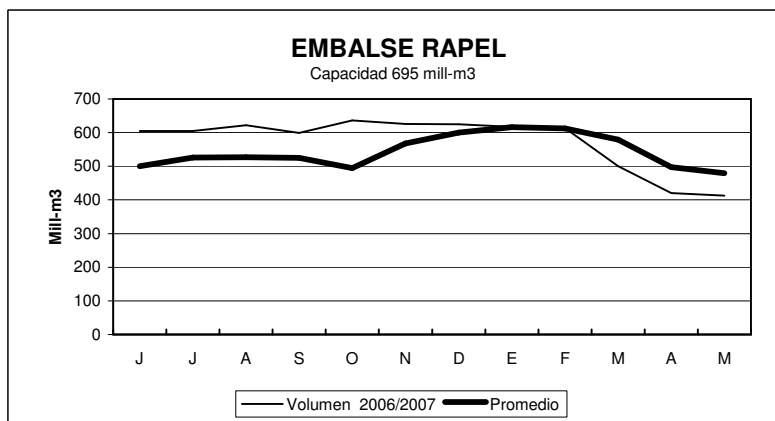
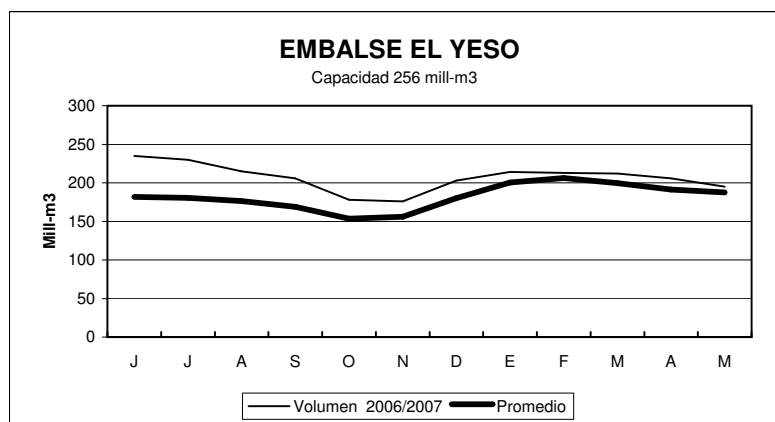
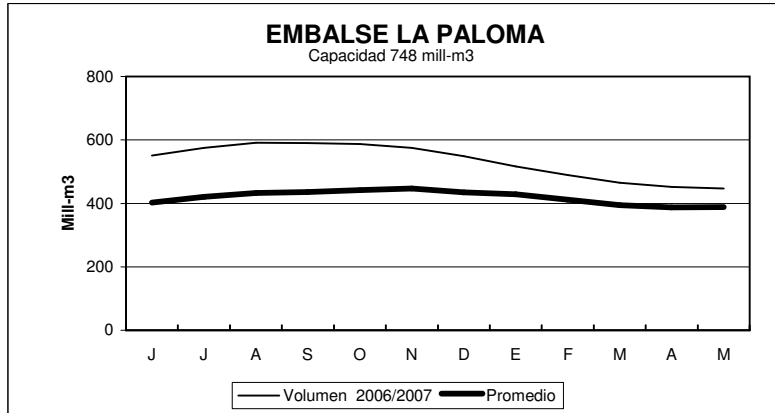
RESUMEN ANUAL

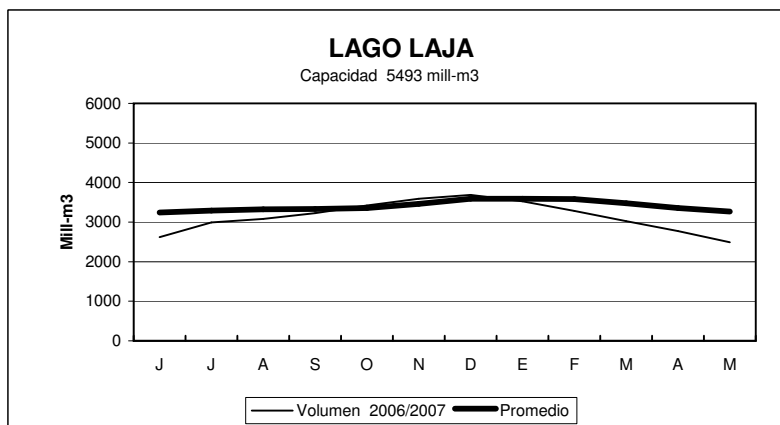
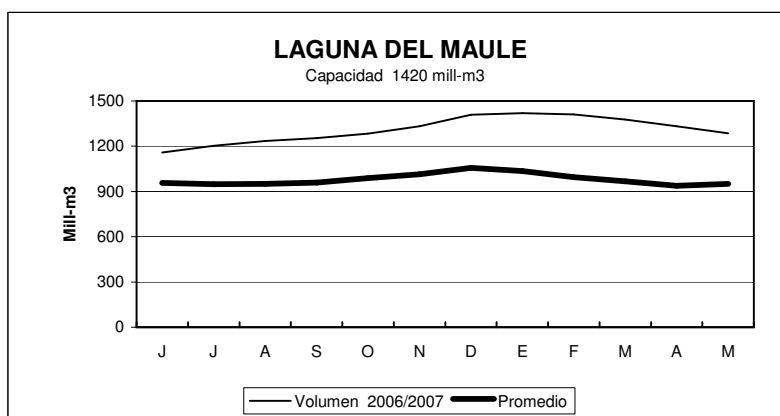
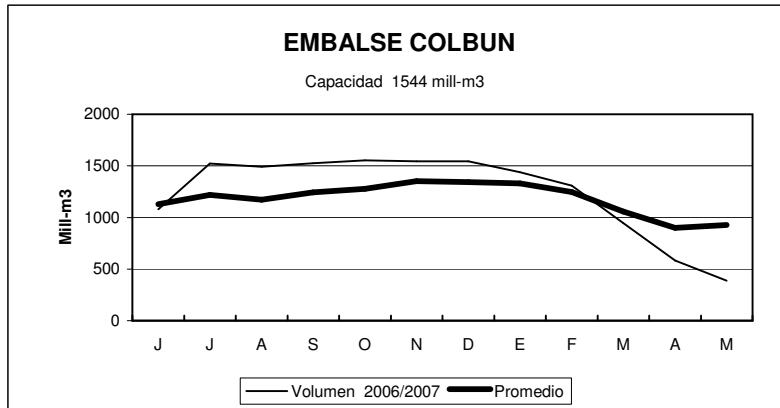
EMBALSE	2006-2007											
	J	J	A	S	O	N	D	E	F	M	A	M
Conchi	18	19	19	19	18	17	16	14	14	14	14	15
Lautaro	13	13	12	11	8	5	3	3	0	0.5	0.0	4.0
Santa Juana	166	166	166	167	160	151	141	134	128	120	118	121
La Laguna	33	32	31	32	35	35	35	33	29	28	30	32
Puclaro	196	197	197	192	189	192	195	196	197	191	188	187
Recoleta	97	97	95	91	87	82	79	75	71	68	67	68
La Paloma	551	575	591	590	587	575	549	517	489	465	452	447
Cogotí	79	83	85	82	81	75	67	59	53	47	43	41
Culimo	0.4	0.7	1.3	1.4	1.6	1.7	1.6	1.0	0.4	0.3	0.0	0.0
Corrales	48	50	51	50	50	50	49	48	47	43	40	40
Peñuelas	21	30	34	33	32	29	26	24	24	20	18	16
El Yeso	235	230	215	206	178	176	203	214	213	212	206	195
Rungue	0.3	2.0	2.0	2.0	2.0	1.8	1.3	1.0	0.7	0.4	0.3	0.3
Rapel	605	605	622	599	636	626	625	617	613	500	420	413
Colbún	1078	1522	1491	1525	1555	1544	1544	1439	1308	945	584	389
Lag. Maule	1159	1202	1234	1254	1283	1332	1408	1420	1411	1376	1333	1285
Bullileo	30	60	60	60	60	60	60	50	35	6.5	0	2.12
Digua	93	179	219	220	220	220	155	85	29	4	3.2	6.0
Tutuvén	10	11	12	12	14	15	10	6	4	2	4.7	2.8
Coihueco	10	16	27	29	30	29	27	20	13.4	5.9	1.8	1.8
Lago Laja (&)	2620	2989	3083	3224	3421	3590	3689	3522	3282	3024	2775	2492

(&) : Volumen sobre cota 1300 msnm

ESTADO DE EMBALSES



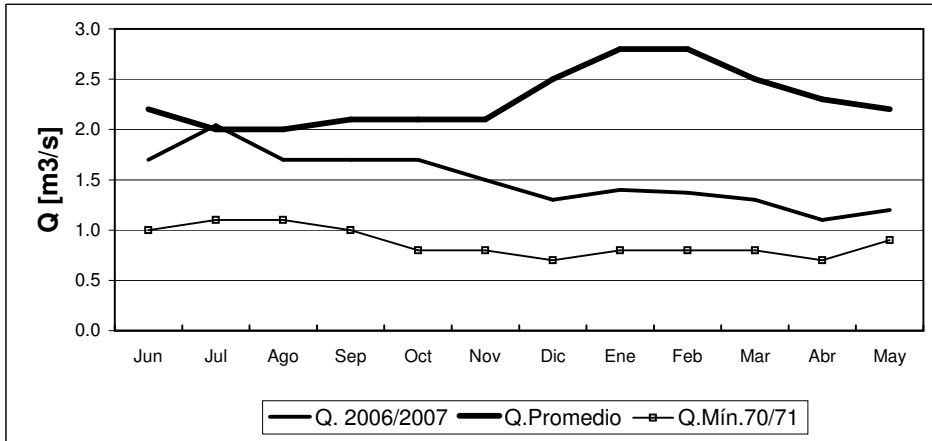




INFORME FLUVIOMETRICO
Caudales medios mensuales en m3/seg

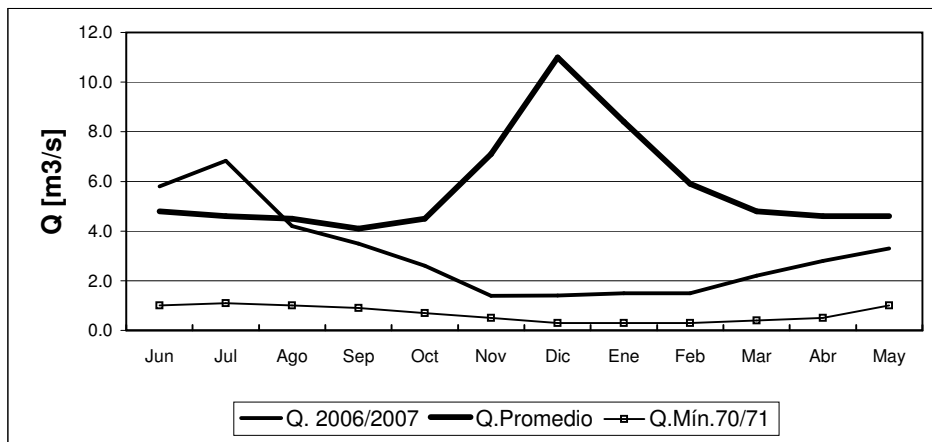
May-07

RIO COPIAPO EN LA PUERTA



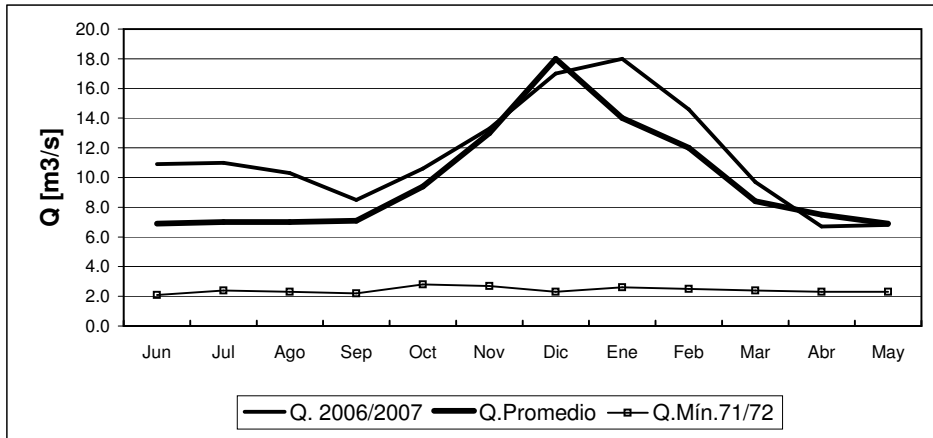
	Jun	Jul	Ago	Sep	Oct	Nov	Dic	Ene	Feb	Mar	Abr	May
Q. 2006/2007	1.7	2.0	1.7	1.7	1.7	1.5	1.3	1.4	1.4	1.3	1.1	1.2
Q. Promedio	2.2	2.0	2.0	2.1	2.1	2.1	2.5	2.8	2.8	2.5	2.3	2.2
Q. Min. 70/71	1.0	1.1	1.1	1.0	0.8	0.8	0.7	0.8	0.8	0.8	0.7	0.9

RIO HUASCO EN ALGODONES



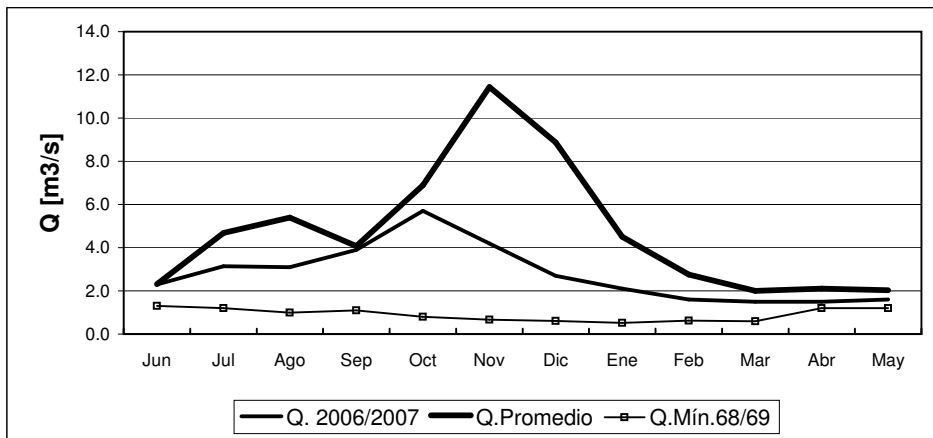
	Jun	Jul	Ago	Sep	Oct	Nov	Dic	Ene	Feb	Mar	Abr	May
Q. 2006/2007	5.8	6.8	4.2	3.5	2.6	1.4	1.4	1.5	1.5	2.2	2.8	3.3
Q. Promedio	4.8	4.6	4.5	4.1	4.5	7.1	11.0	8.4	5.9	4.8	4.6	4.6
Q. Min. 70/71	1.0	1.1	1.0	0.9	0.7	0.5	0.3	0.3	0.3	0.4	0.5	1.0

RIO ELQUI EN ALGARROBAL



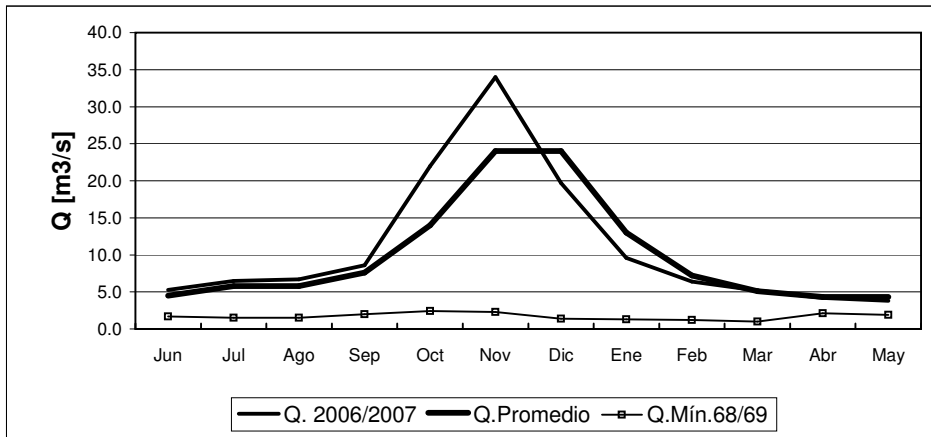
	Jun	Jul	Ago	Sep	Oct	Nov	Dic	Ene	Feb	Mar	Abr	May
Q. 2006/2007	10.9	11.0	10.3	8.5	10.6	13.3	17.0	18.0	14.6	9.7	6.7	6.8
Q. Promedio	6.9	7.0	7.0	7.1	9.4	13.0	18.0	14.0	12.0	8.4	7.5	6.9
Q. Mín. 71/72	2.1	2.4	2.3	2.2	2.8	2.7	2.3	2.6	2.5	2.4	2.3	2.3

RIO GRANDE EN LAS RAMADAS



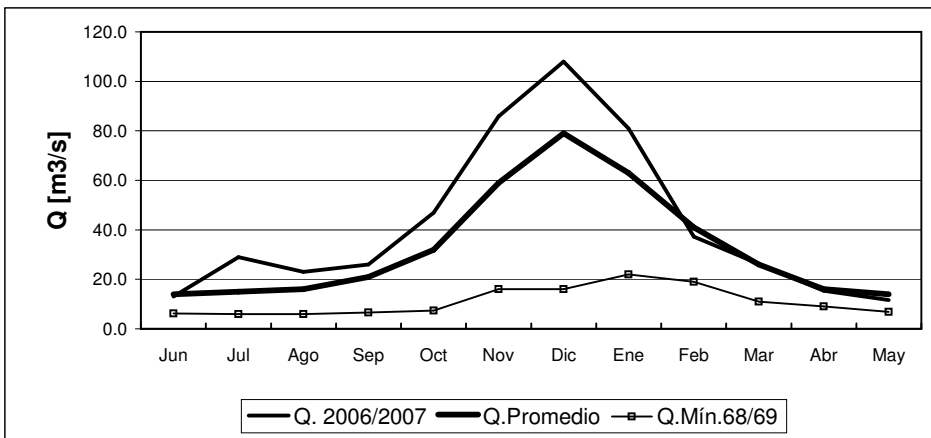
	Jun	Jul	Ago	Sep	Oct	Nov	Dic	Ene	Feb	Mar	Abr	May
Q. 2006/2007	2.3	3.1	3.1	3.9	5.7	4.2	2.7	2.1	1.6	1.5	1.5	1.6
Q. Promedio	2.3	4.7	5.4	4.1	6.9	11.4	8.9	4.5	2.8	2.0	2.1	2.0
Q. Mín. 68/69	1.3	1.2	1.0	1.1	0.8	0.7	0.6	0.5	0.6	0.6	1.2	1.2

RIO CHOAPA EN CUNCUMEN



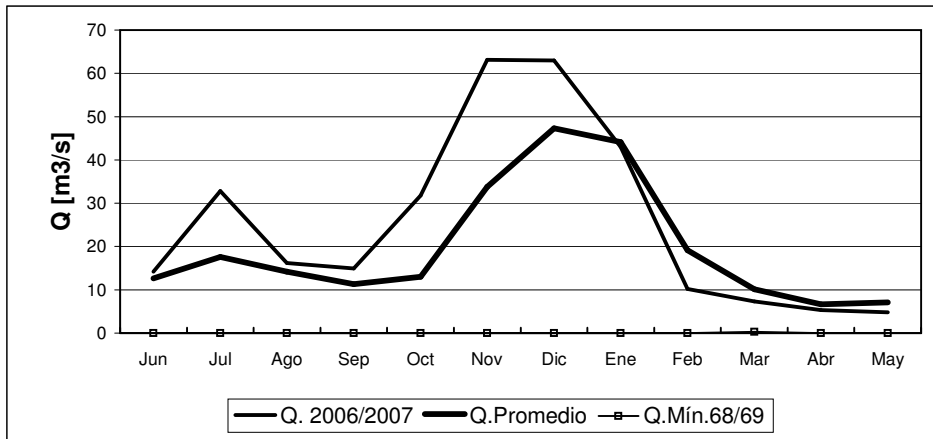
	Jun	Jul	Ago	Sep	Oct	Nov	Dic	Ene	Feb	Mar	Abr	May
Q. 2006/2007	5.3	6.5	6.7	8.6	22.0	34.0	19.7	9.6	6.4	5.2	4.2	3.8
Q. Promedio	4.5	5.8	5.8	7.6	14.0	24.0	24.0	13.0	7.2	5.1	4.3	4.3
Q. Mín.68/69	1.7	1.5	1.5	2.0	2.4	2.3	1.4	1.3	1.2	1.0	2.1	1.9

RIO ACONCAGUA EN CHACABUQUITO



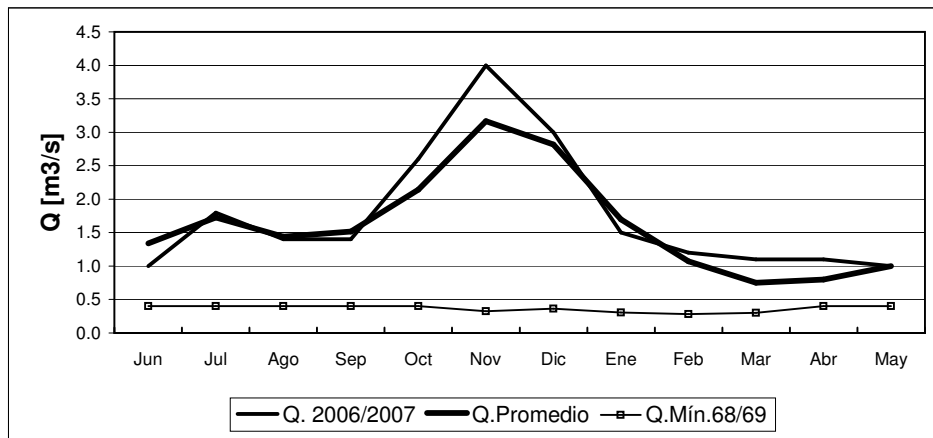
	Jun	Jul	Ago	Sep	Oct	Nov	Dic	Ene	Feb	Mar	Abr	May
Q. 2006/2007	13.0	29.0	23.0	26.0	47.0	85.8	108.0	81.0	37.2	26.3	15.4	11.6
Q. Promedio	14.0	15.0	16.0	21.0	32.0	59.0	79.0	63.0	41.0	26.0	16.0	14.0
Q. Mín.68/69	6.2	5.9	5.9	6.6	7.4	16.0	16.0	22.0	19.0	11.0	9.1	6.9

RIO ACONCAGUA EN SAN FELIPE



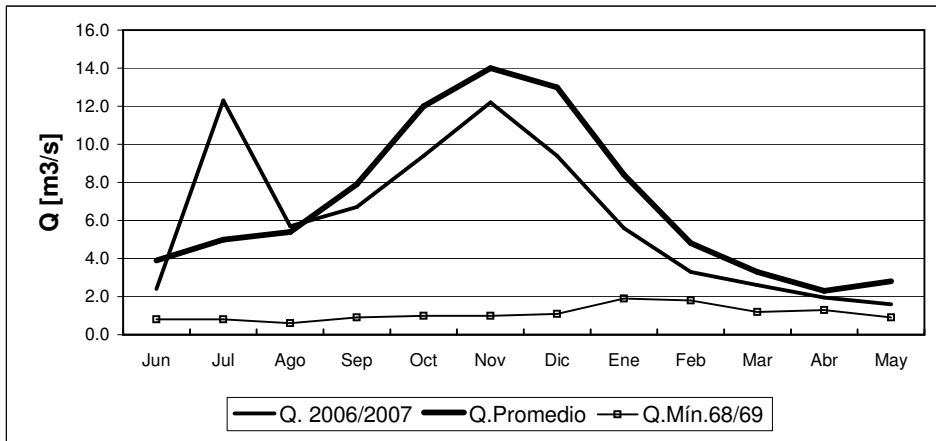
	Jun	Jul	Ago	Sep	Oct	Nov	Dic	Ene	Feb	Mar	Abr	May
Q. 2006/2007	14.2	32.8	16.2	14.9	31.8	63.1	63.0	43.0	10.2	7.3	5.3	4.8
Q. Promedio	12.7	17.6	14.2	11.3	13.0	33.8	47.3	44.1	19.1	10.2	6.7	7.1
Q. Mín.68/69	0.0	0.0	0.0	0.0	0.0	0.0	0.0	0.0	0.0	0.3	0.0	0.0

ESTERO ARRAYAN EN LA MONTOSA



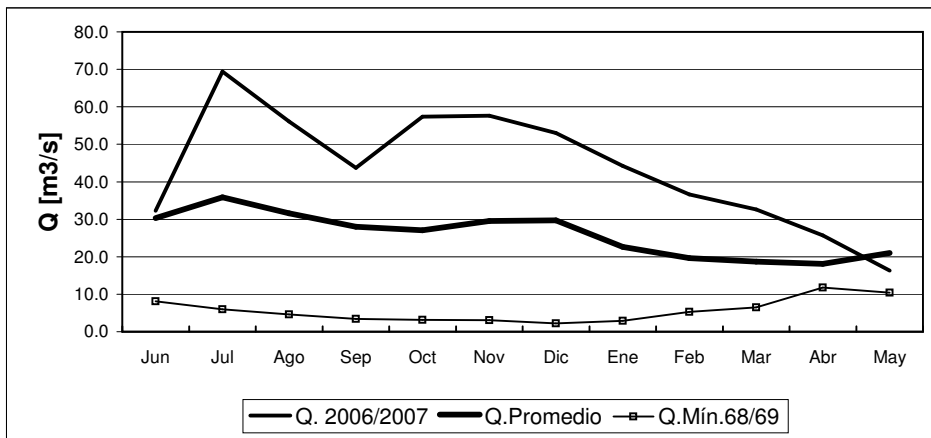
	Jun	Jul	Ago	Sep	Oct	Nov	Dic	Ene	Feb	Mar	Abr	May
Q. 2006/2007	1.0	1.8	1.4	1.4	2.6	4.0	3.0	1.5	1.2	1.1	1.1	1.0
Q. Promedio	1.3	1.7	1.4	1.5	2.1	3.2	2.8	1.7	1.1	0.8	0.8	1.0
Q. Mín.68/69	0.4	0.4	0.4	0.4	0.4	0.3	0.4	0.3	0.3	0.3	0.4	0.4

RIO MAPOCHO EN LOS ALMENDROS



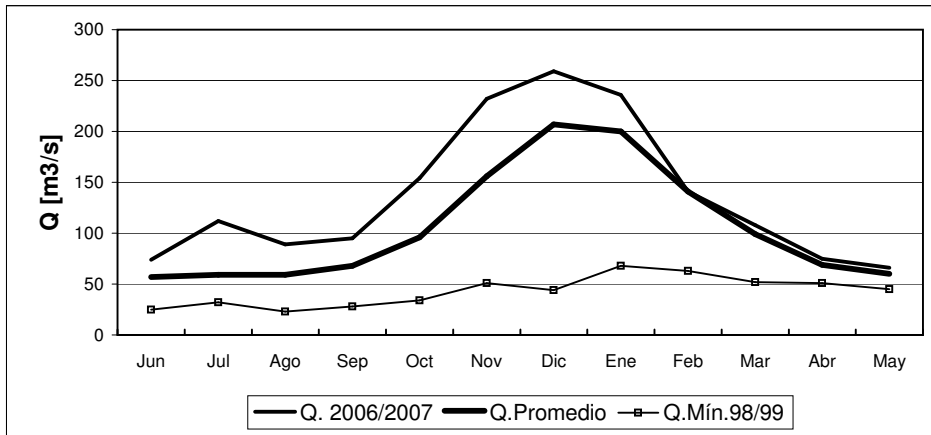
	Jun	Jul	Ago	Sep	Oct	Nov	Dic	Ene	Feb	Mar	Abr	May
Q. 2006/2007	2.4	12.3	5.7	6.7	9.4	12.2	9.4	5.6	3.3	2.6	2.0	1.6
Q. Promedio	3.9	5.0	5.4	7.9	12.0	14.0	13.0	8.4	4.8	3.3	2.3	2.8
Q. Mín. 68/69	0.8	0.8	0.6	0.9	1.0	1.0	1.1	1.9	1.8	1.2	1.3	0.9

RIO MAPOCHO EN RINCONADA DE MAIPU



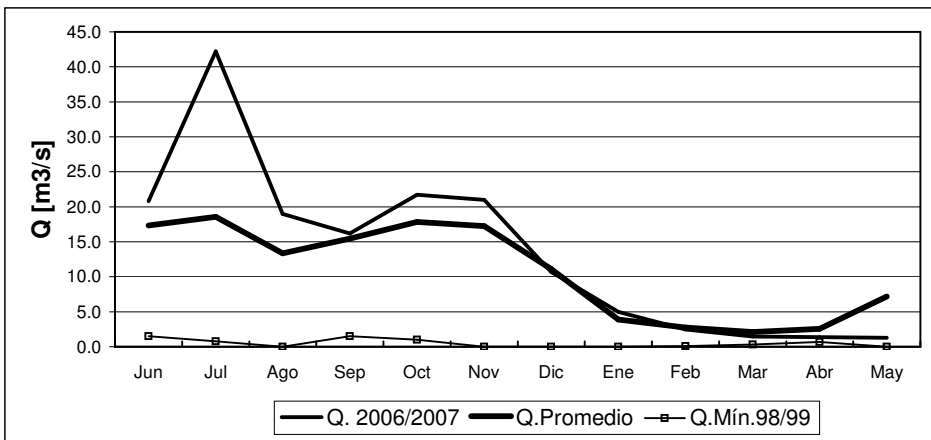
	Jun	Jul	Ago	Sep	Oct	Nov	Dic	Ene	Feb	Mar	Abr	May
Q. 2006/2007	32.3	69.4	56.1	43.7	57.4	57.6	53.0	44.2	36.6	32.6	25.7	16.3
Q. Promedio	30.3	35.9	31.6	28.0	27.1	29.5	29.7	22.6	19.6	18.7	18.1	21.0
Q. Mín. 68/69	8.1	6.0	4.6	3.4	3.2	3.1	2.2	2.9	5.3	6.5	11.8	10.4

RIO MAIPO EN EL MANZANO



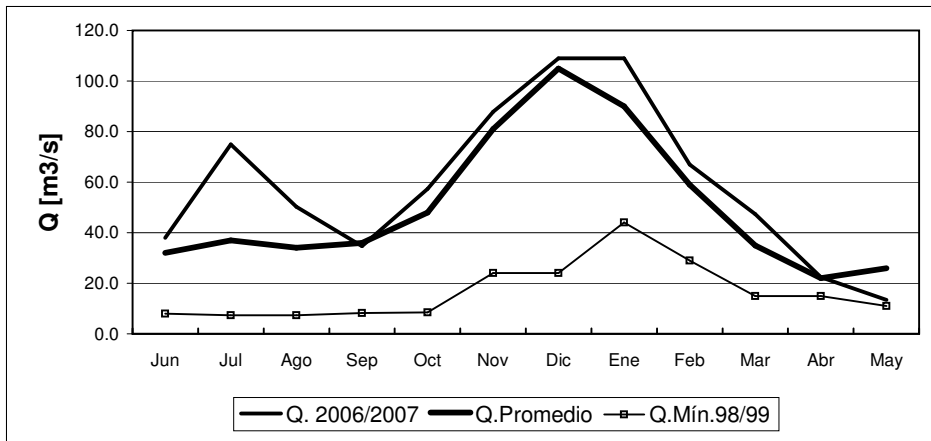
	Jun	Jul	Ago	Sep	Oct	Nov	Dic	Ene	Feb	Mar	Abr	May
Q. 2006/2007	73.8	112	89	95	154	232	259	236	141	108	75	66
Q. Promedio	57	59	59	68	96	156	207	200	141	99	69	60
Q. Mín.98/99	25	32	23	28	34	51	44	68	63	52	51	45

RIO CLARO EN EL VALLE 2



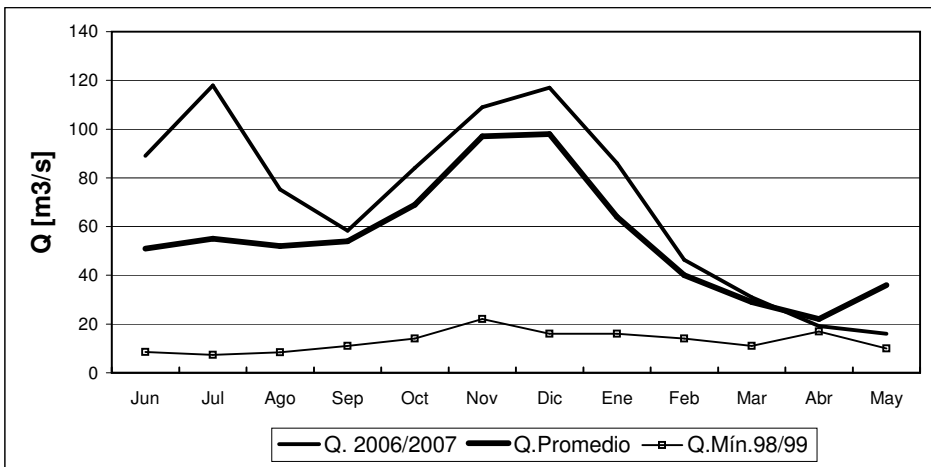
	Jun	Jul	Ago	Sep	Oct	Nov	Dic	Ene	Feb	Mar	Abr	May
Q. 2006/2007	20.8	42.2	19.0	16.2	21.7	21.0	10.7	5.0	2.5	1.5	1.4	1.3
Q. Promedio	17.3	18.6	13.4	15.5	17.9	17.2	11.1	3.9	2.7	2.1	2.6	7.2
Q. Mín.98/99	1.5	0.8	0.0	1.5	1.0	0.0	0.0	0.0	0.1	0.3	0.7	0.0

RIO TINGUIRIRICA BAJO BRIONES



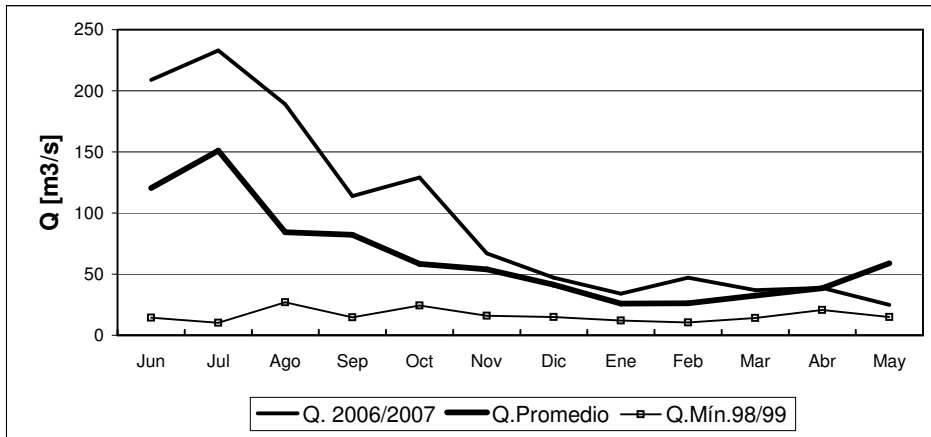
	Jun	Jul	Ago	Sep	Oct	Nov	Dic	Ene	Feb	Mar	Abr	May
Q. 2006/2007	38.0	74.9	50.3	34.7	57.3	87.9	109.0	109.0	67.0	47.4	22.4	13.4
Q. Promedio	32.0	37.0	34.0	36.0	48.0	81.0	105.0	90.0	59.0	35.0	22.0	26.0
Q. Mín.98/99	8.0	7.4	7.4	8.2	8.5	24.0	24.0	44.0	29.0	15.0	15.0	11.0

RIO TENO DESPUES DE JUNTA



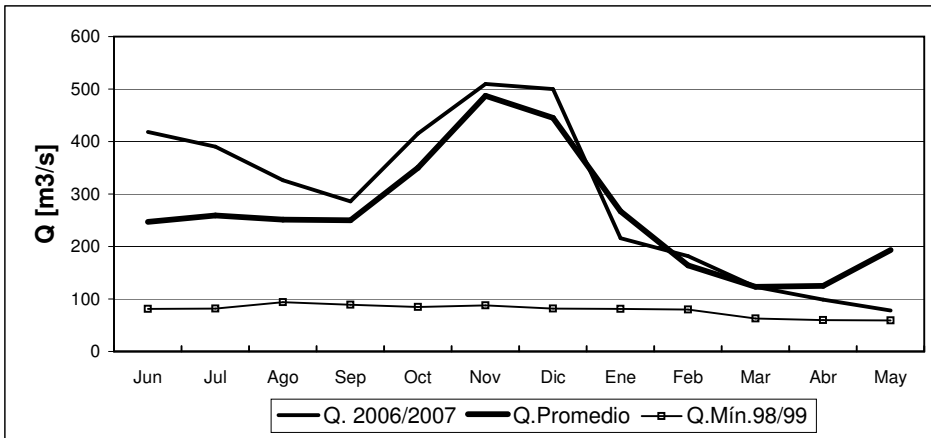
	Jun	Jul	Ago	Sep	Oct	Nov	Dic	Ene	Feb	Mar	Abr	May
Q. 2006/2007	89	118	75	58	84	109	117	86	46	31	19	16
Q. Promedio	51	55	52	54	69	97	98	64	40	29	22	36
Q. Mín.98/99	8.6	7.4	8.4	11	14	22	16	16	14	11	17	10

RIO CLARO EN RAUQUEN



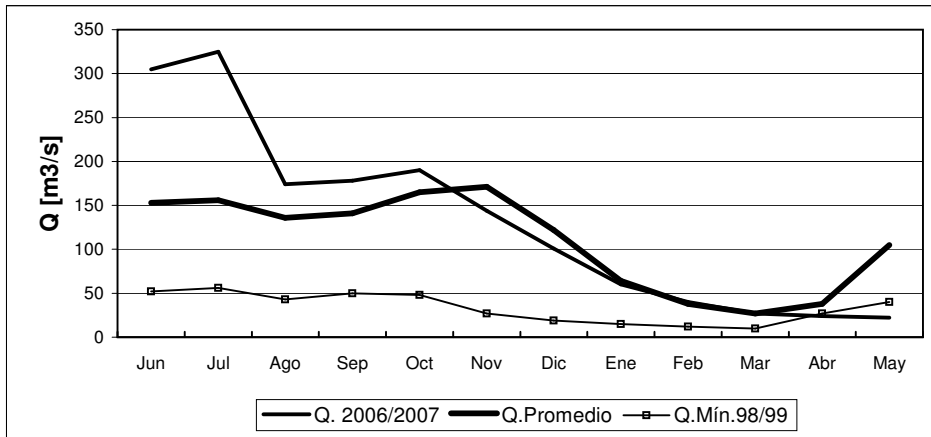
	Jun	Jul	Ago	Sep	Oct	Nov	Dic	Ene	Feb	Mar	Abr	May
Q. 2006/2007	209	233	189	114	129	67	47	34	47	37	39	25
Q. Promedio	121	151	84	82	58	54	41	26	26	33	39	59
Q. Mín.98/99	15	10	27	15	24	16	15	12	10	14	21	15

RIO MAULE EN ARMERILLO (R. N.)



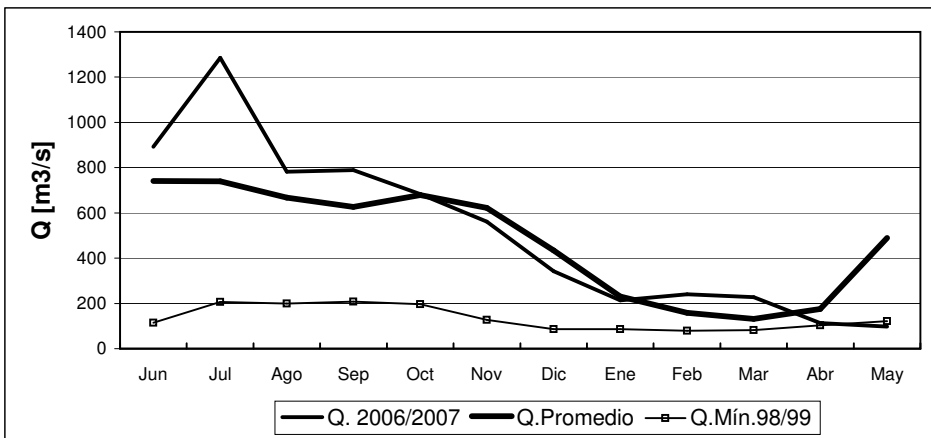
	Jun	Jul	Ago	Sep	Oct	Nov	Dic	Ene	Feb	Mar	Abr	May
Q. 2006/2007	418	390	326	286	415	510	500	216	182	123	99	78
Q. Promedio	247	259	251	250	350	487	445	267	164	123	125	193
Q. Mín.98/99	81	82	94	89	85	88	82	81	80	63	60	59

RIO ÑUBLE EN SAN FABIAN



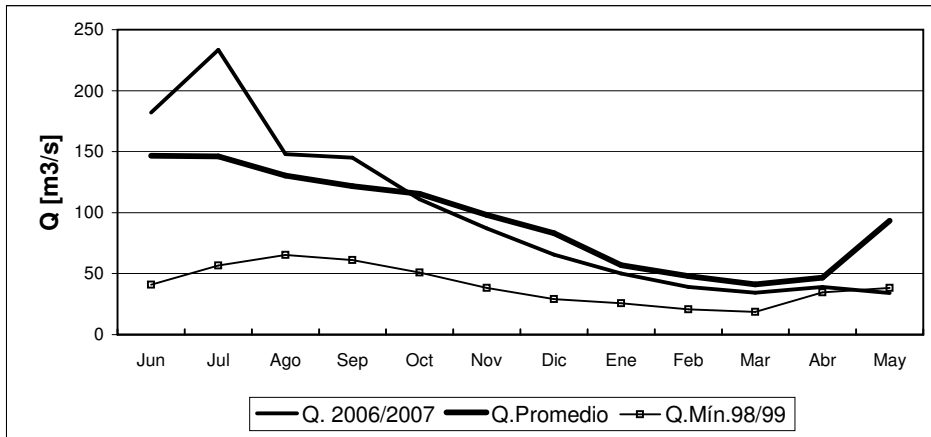
	Jun	Jul	Ago	Sep	Oct	Nov	Dic	Ene	Feb	Mar	Abr	May
Q. 2006/2007	305	325	174	178	190	144	101	60	40	27	24	22
Q. Promedio	153	156	136	141	165	171	122	64	38	27	38	105
Q. Mín.98/99	52	56	43	50	48	27	19	15	12	10	27	40

RIO BIO-BIO EN RUCALHUE



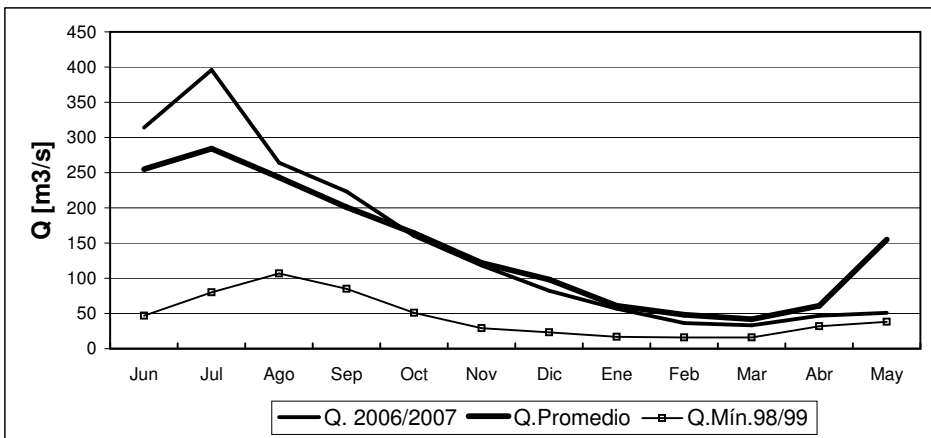
	Jun	Jul	Ago	Sep	Oct	Nov	Dic	Ene	Feb	Mar	Abr	May
Q. 2006/2007	892	1285	782	789	683	561	342	214	240	227	113	97
Q. Promedio	741	740	668	627	679	622	434	231	158	132	176	489
Q. Mín.98/99	114	207	200	208	197	127	86	86	79	82	103	122

RIO CAUTIN EN RARI-RUCA



	Jun	Jul	Ago	Sep	Oct	Nov	Dic	Ene	Feb	Mar	Abr	May
Q. 2006/2007	182	233	148	145	111	87	66	50	39	34	39	34 *
Q.Promedio	147	146	131	122	116	98	83	57	48	41	47	93
Q.Mín.98/99	41	57	65	61	51	38	29	26	21	19	35	38

RIO CAUTIN EN CAJON



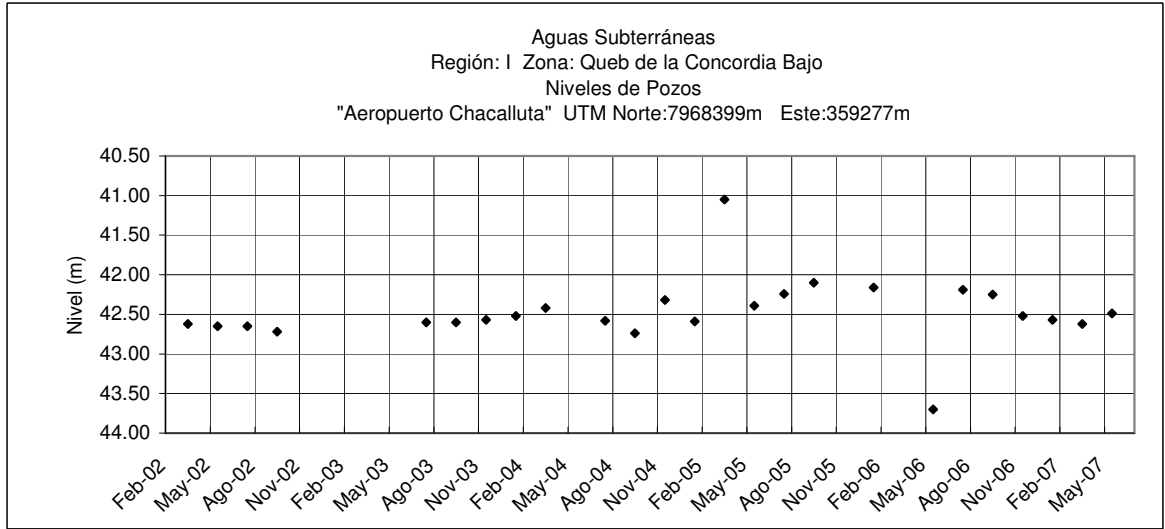
	Jun	Jul	Ago	Sep	Oct	Nov	Dic	Ene	Feb	Mar	Abr	May
Q. 2006/2007	314	396	264	223	160	118	82	57	36	33	47	51
Q.Promedio	255	284	243	201	164	122	98	61	48	42	61	155
Q.Mín.98/99	47	80	107	85	51	29	23	17	16	16	32	38

* valor de 9 días

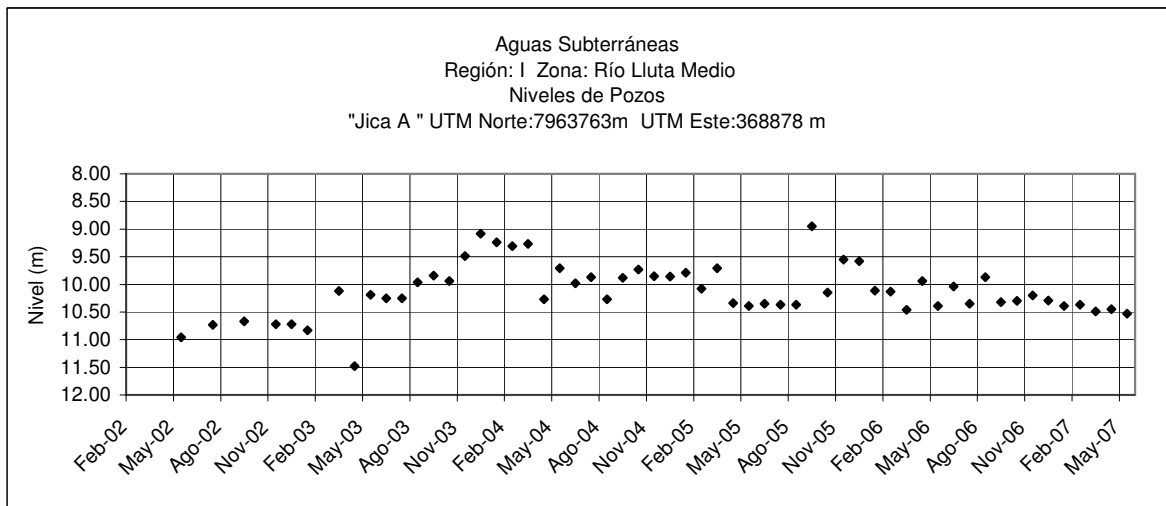
Informe de Aguas Subterráneas

Niveles de Pozos en metros

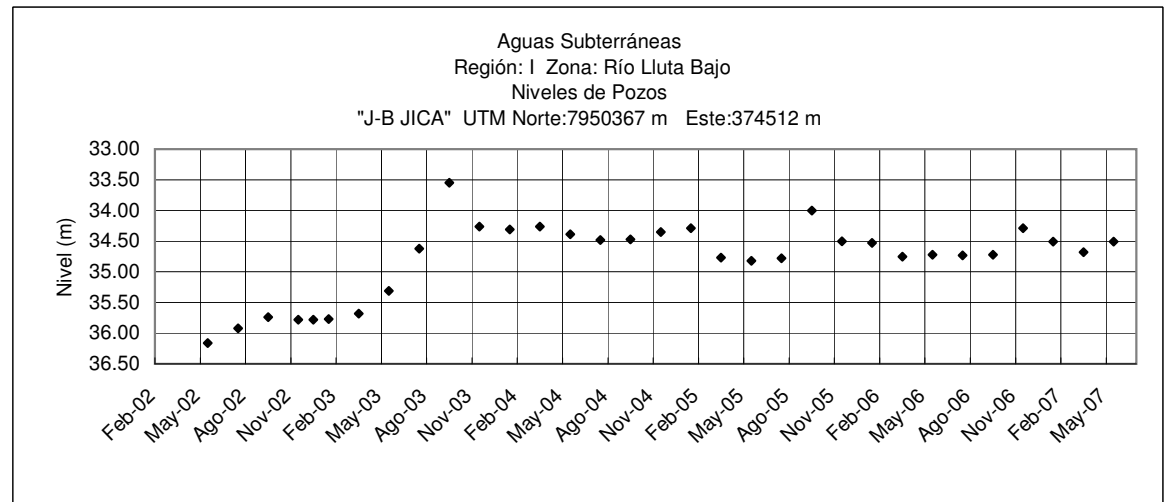
*Gráficos de últimos cinco años.



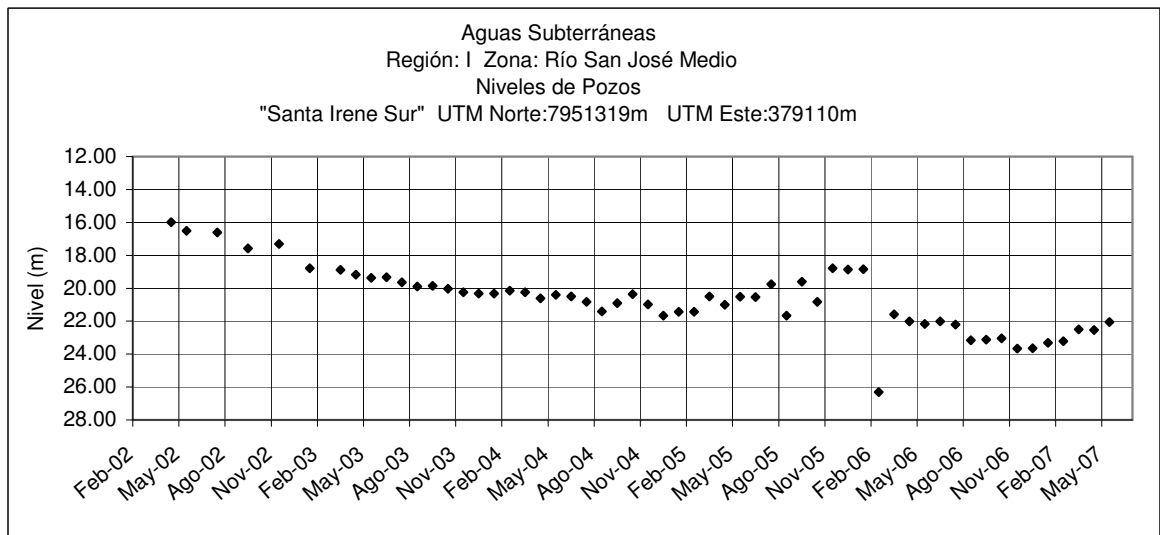
	Jun	Jul	Ago	Sep	Oct	Nov	Dic	Ene	Feb	Mar	Abr	May
2006-2007		42.19		42.25		42.52		42.57		42.62		42.49



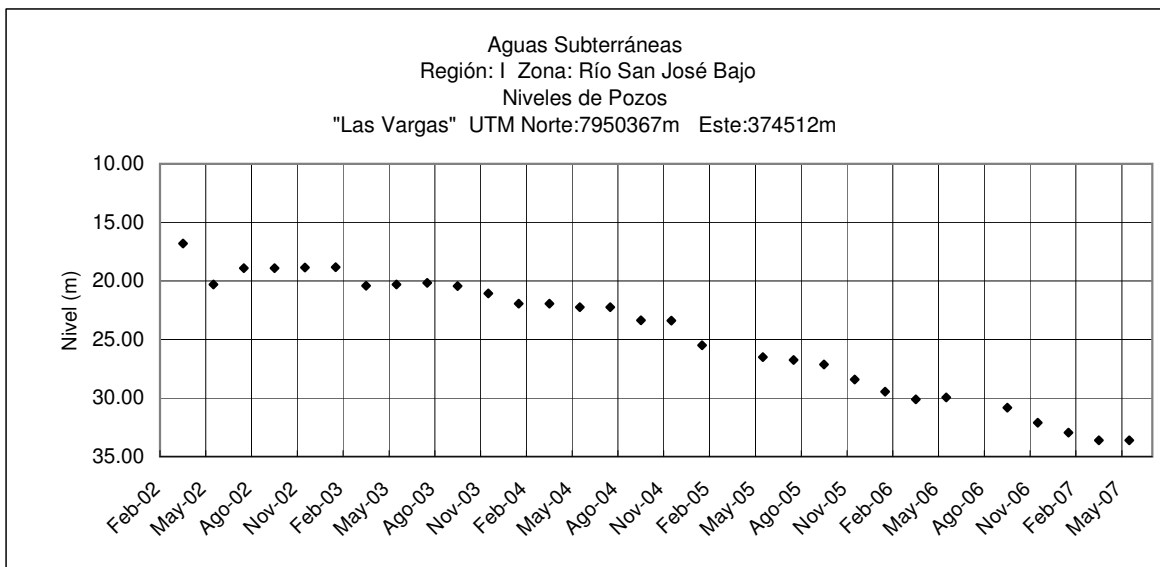
	Jun	Jul	Ago	Sep	Oct	Nov	Dic	Ene	Feb	Mar	Abr	May
2006-2007	10.04	10.35	9.87	10.32	10.3	10.2	10.29	10.39	10.37	10.49	10.45	10.53



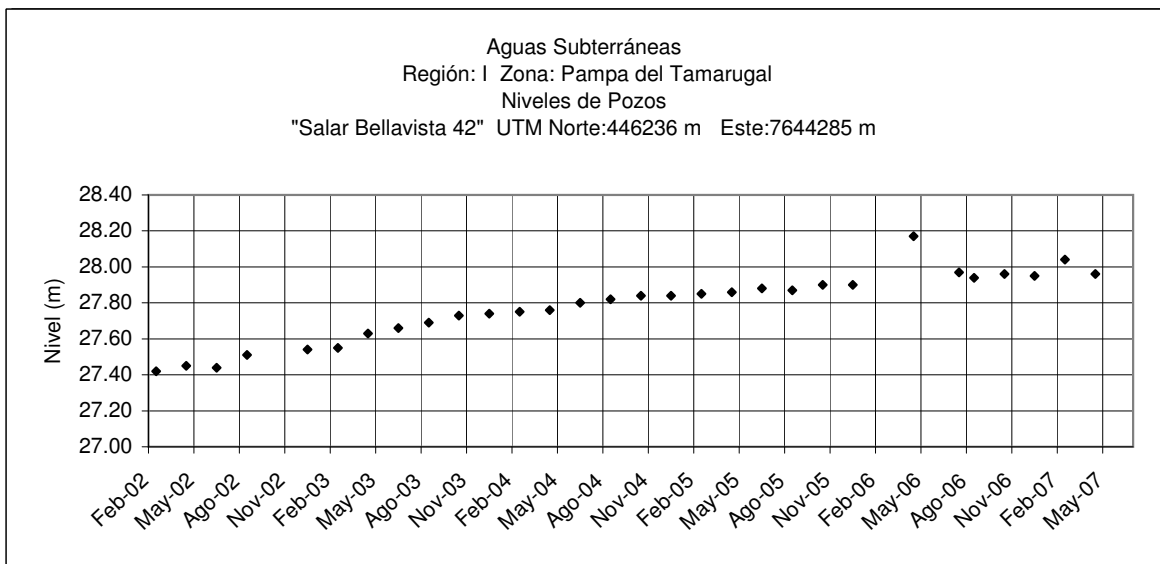
	Jun	Jul	Ago	Sep	Oct	Nov	Dic	Ene	Feb	Mar	Abr	May
2006-2007		34.73		34.72		34.29		34.51		34.68		34.51



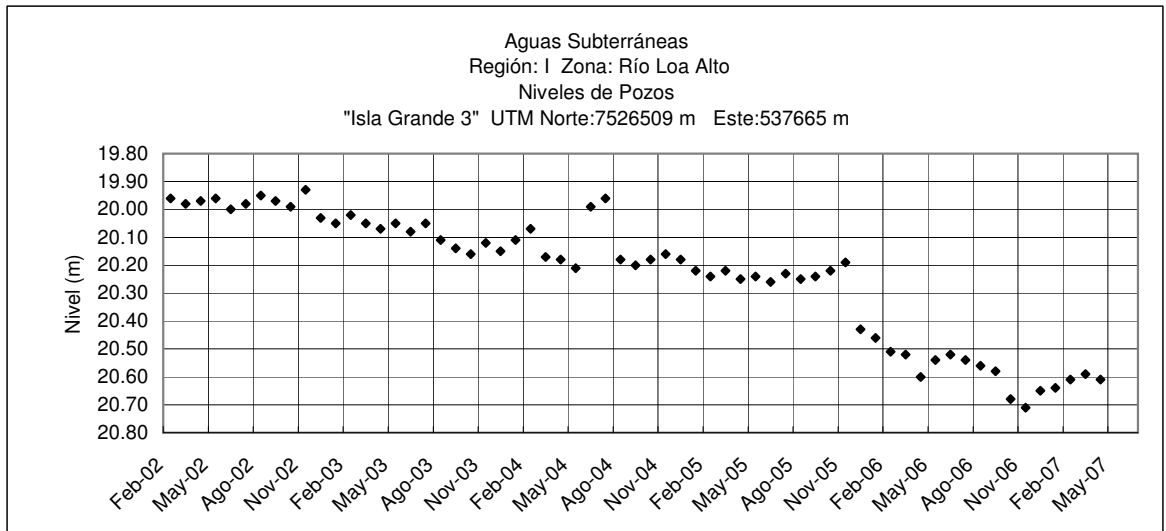
Month	Jun	Jul	Ago	Sep	Oct	Nov	Dic	Ene	Feb	Mar	Abr	May
2006-2007	22.01	22.20	23.16	23.13	23.05	23.67	23.64	23.31	23.22	22.49	22.53	22.06



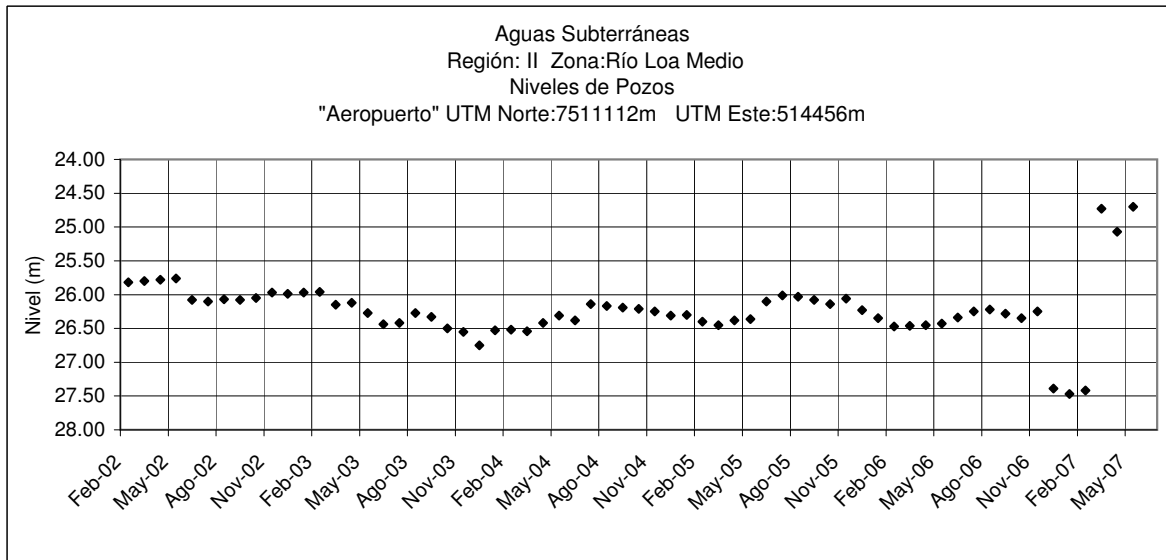
Month	Jun	Jul	Ago	Sep	Oct	Nov	Dic	Ene	Feb	Mar	Abr	May
2006-2007		30.23		30.83		32.1		32.95		33.6		33.61



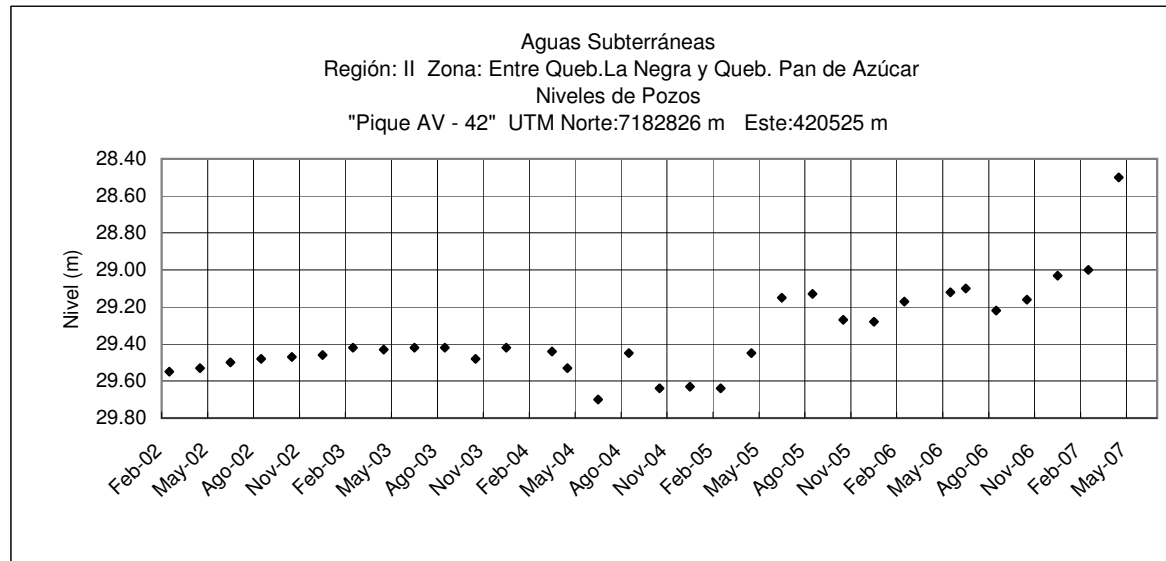
Month	Jun	Jul	Ago	Sep	Oct	Nov	Dic	Ene	Feb	Mar	Abr	May
2006-2007		27.97	27.94		27.96		27.95		28.04		27.96	



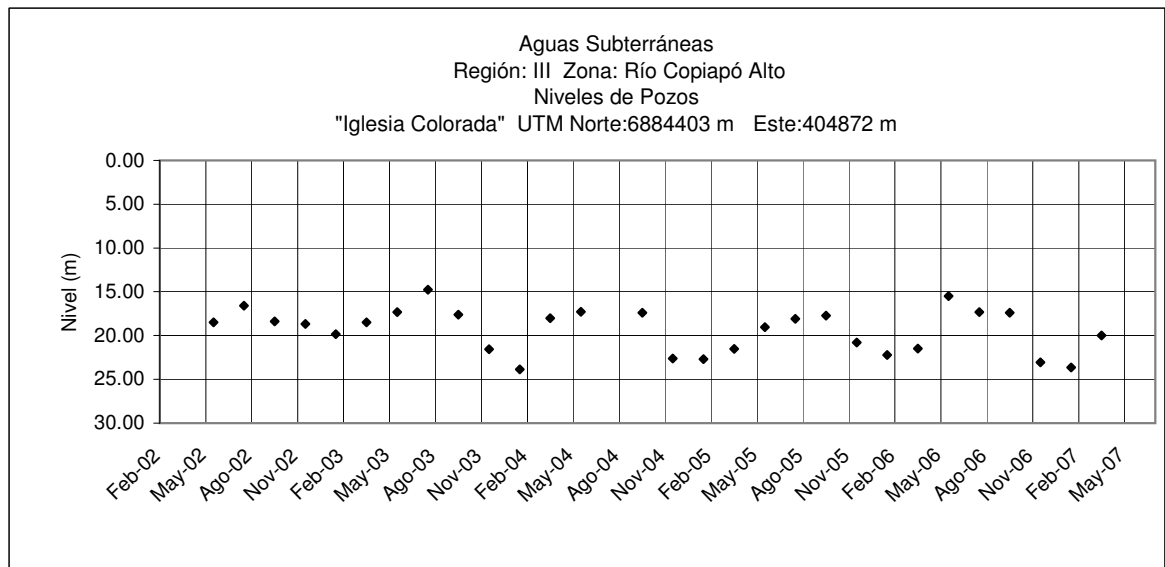
	Jun	Jul	Ago	Sep	Oct	Nov	Dic	Ene	Feb	Mar	Abr	May
2006-2007	20.52	20.54	20.56	20.58	20.68	20.71	20.65	20.64	20.61	20.59	20.61	



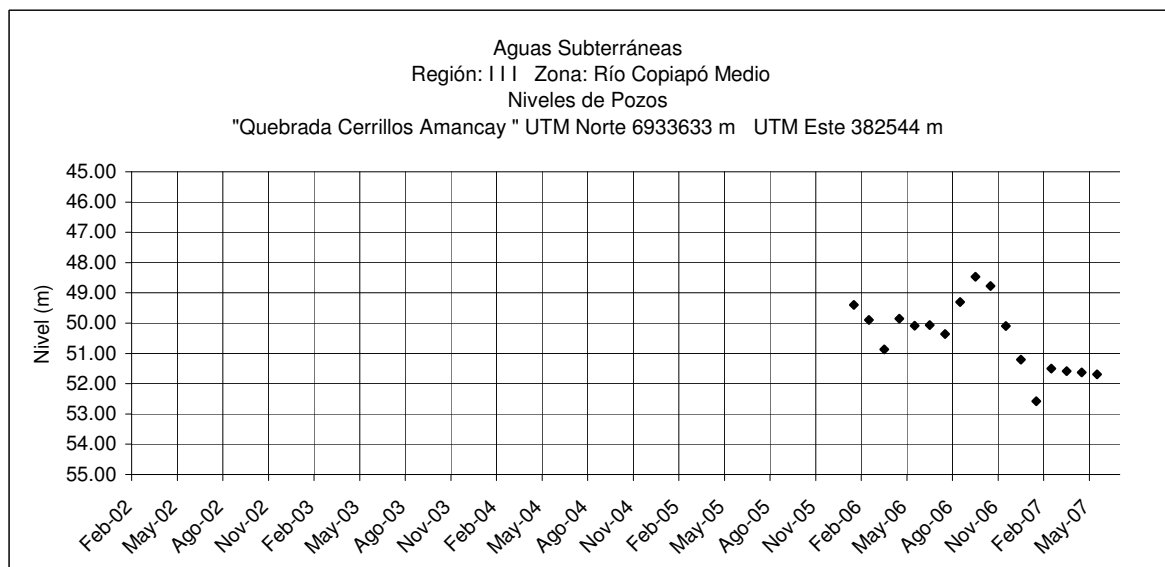
	Jun	Jul	Ago	Sep	Oct	Nov	Dic	Ene	Feb	Mar	Abr	May
2006-2007	26.34	26.25	26.22	26.28	26.35	26.25	27.39	27.47	27.42	24.73	25.07	24.7

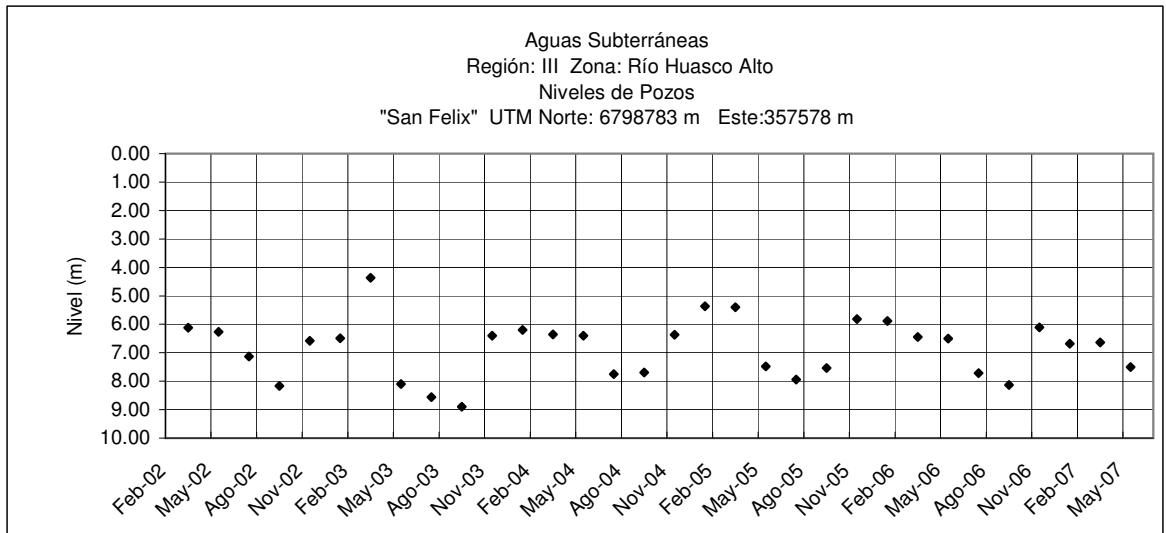


	Jun	Jul	Ago	Sep	Oct	Nov	Dic	Ene	Feb	Mar	Abr	May
2006-2007	29.1		29.22		29.16		29.03		29		28.5	

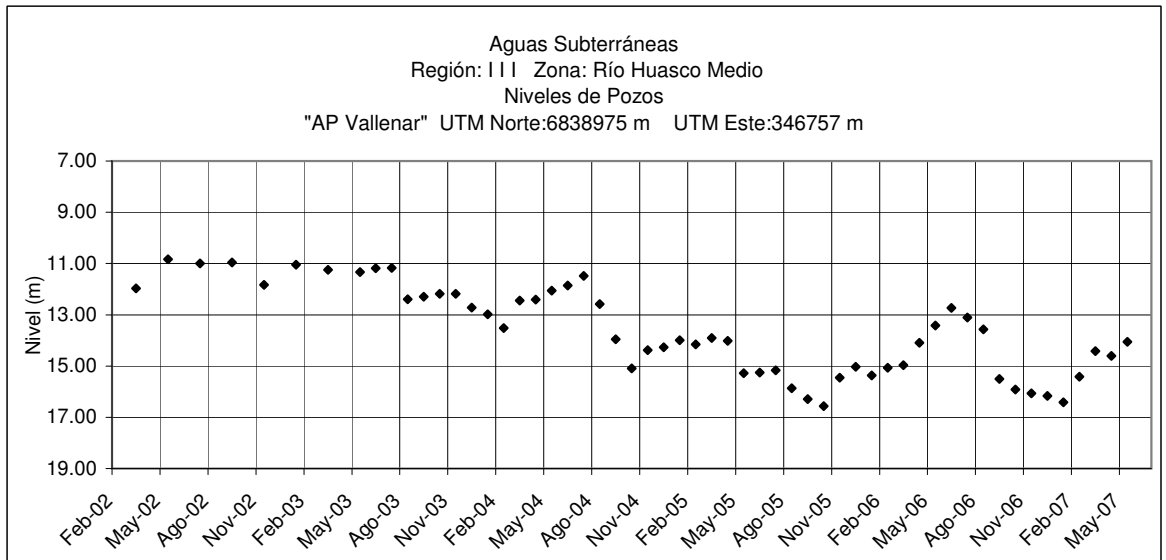


	Jun	Jul	Ago	Sep	Oct	Nov	Dic	Ene	Feb	Mar	Abr	May
2006-2007		17.33		17.41		23.06		23.65		19.97		21.09

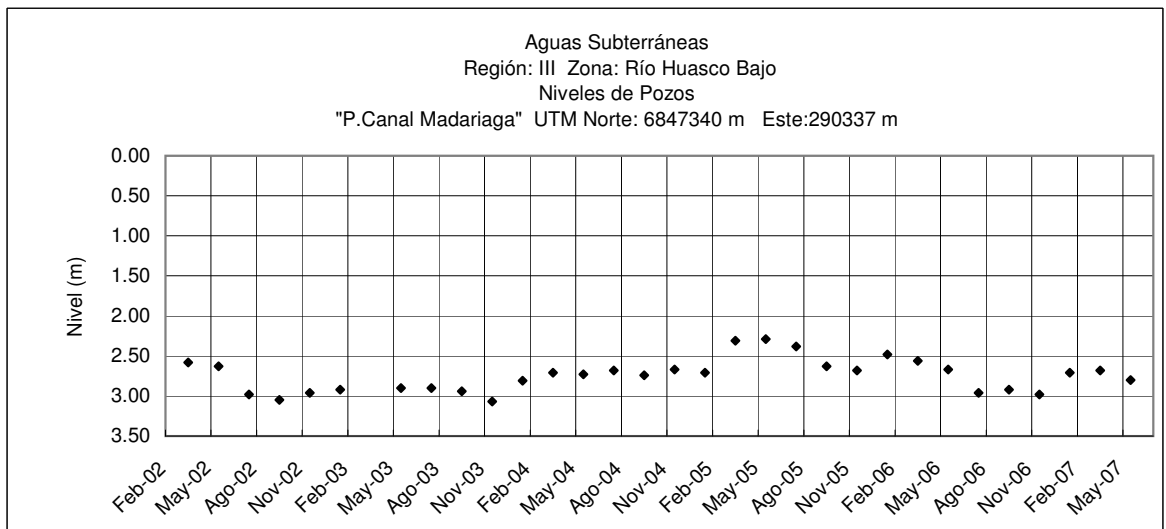




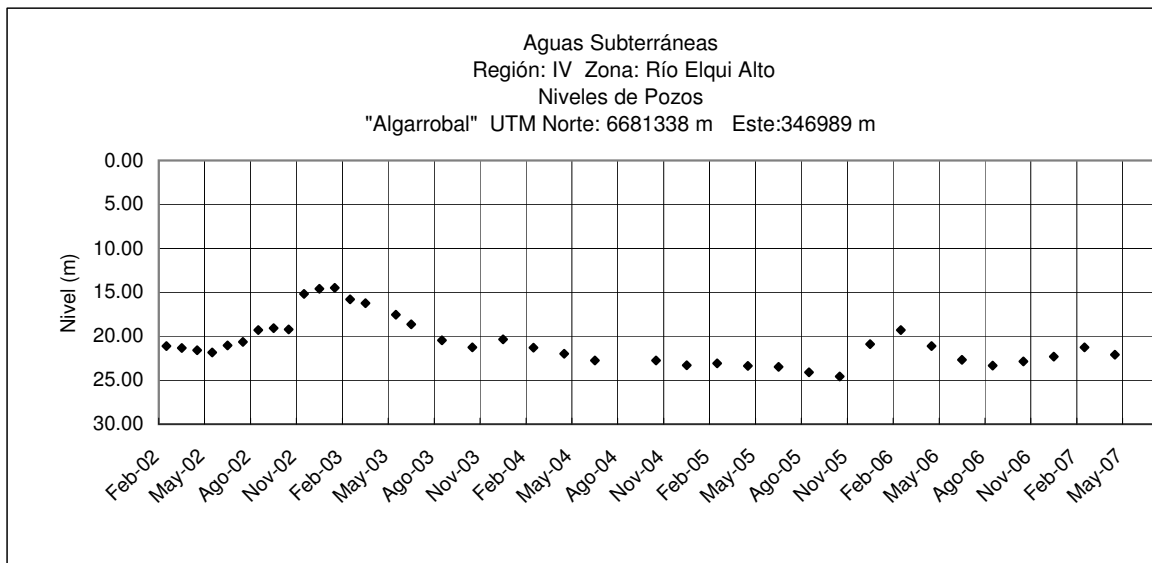
	Jun	Jul	Ago	Sep	Oct	Nov	Dic	Ene	Feb	Mar	Abr	May
2006-2007		7.72		8.13		6.11		6.68		6.64		7.5



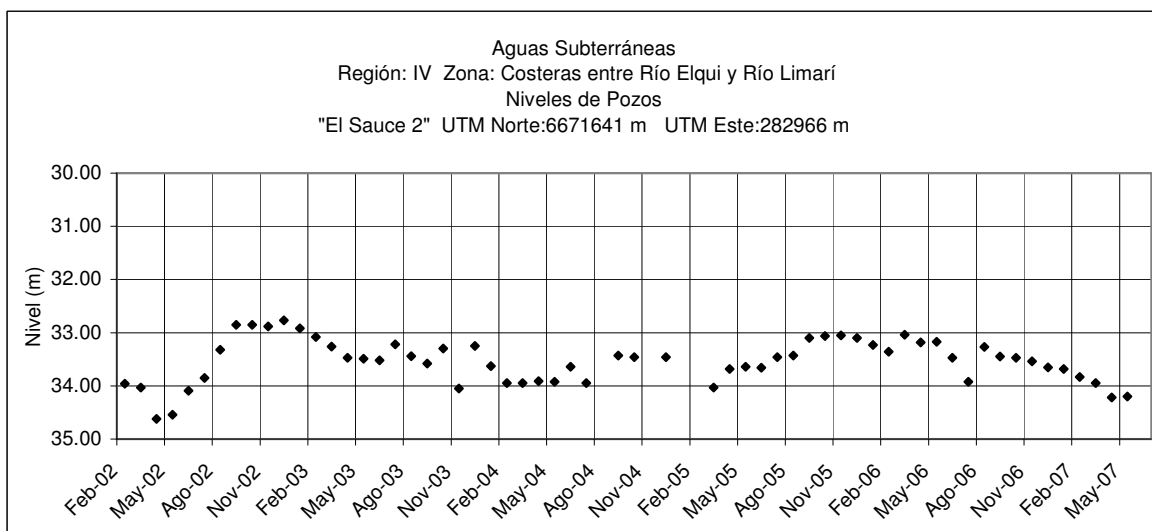
	Jun	Jul	Ago	Sep	Oct	Nov	Dic	Ene	Feb	Mar	Abr	May
2006-2007	12.73	13.11	13.57	15.5	15.92	16.07	16.17	16.41	15.41	14.42	14.61	14.05



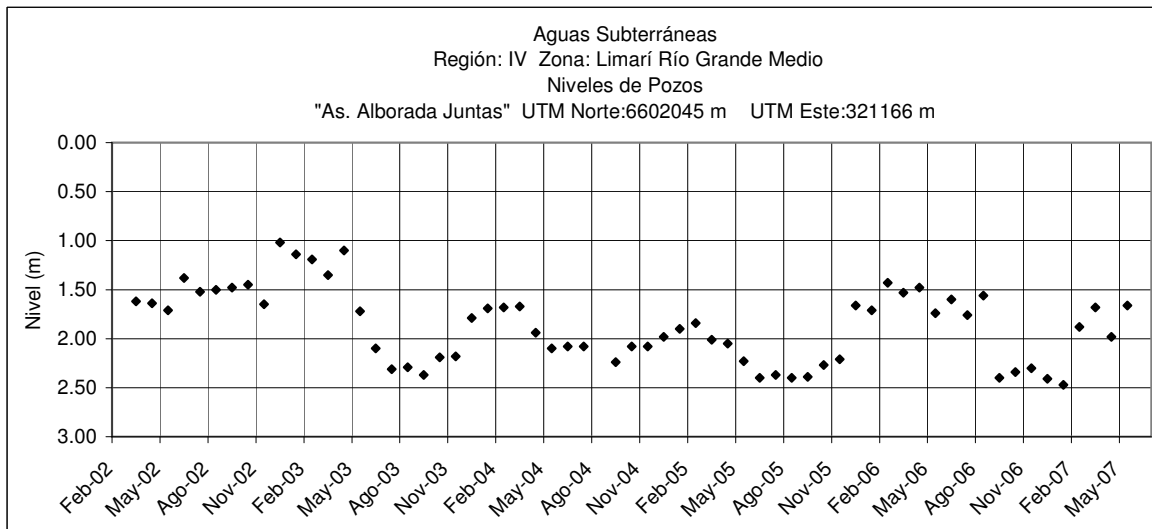
	Jun	Jul	Ago	Sep	Oct	Nov	Dic	Ene	Feb	Mar	Abr	May
2006-2007		2.96		2.92		2.98		2.71		2.68		2.80



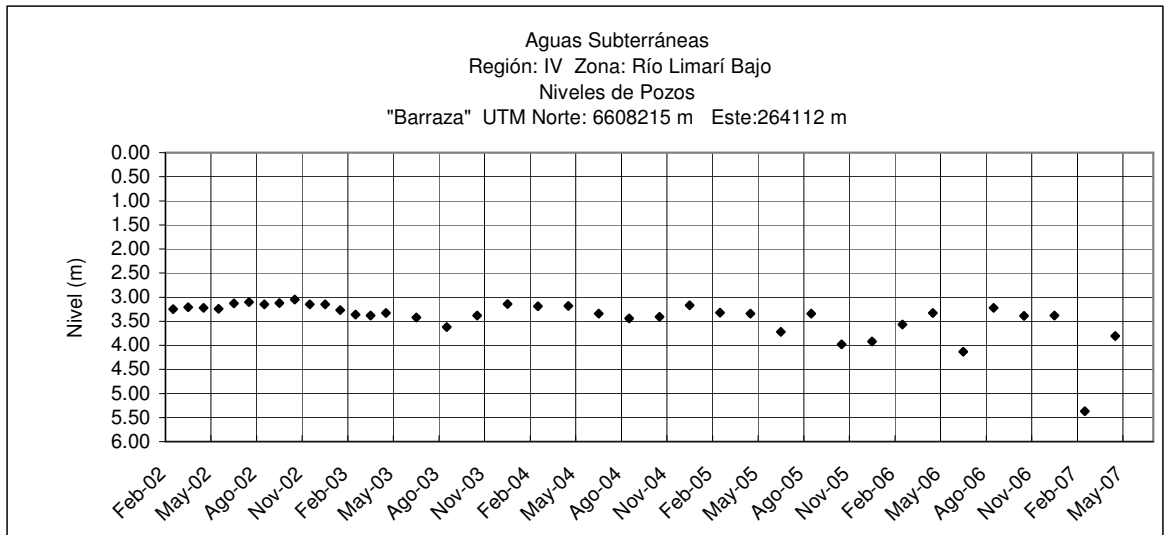
	Jun	Jul	Ago	Sep	Oct	Nov	Dic	Ene	Feb	Mar	Abr	May
2006-2007	22.7		23.32		22.87		22.31		21.27		22.09	



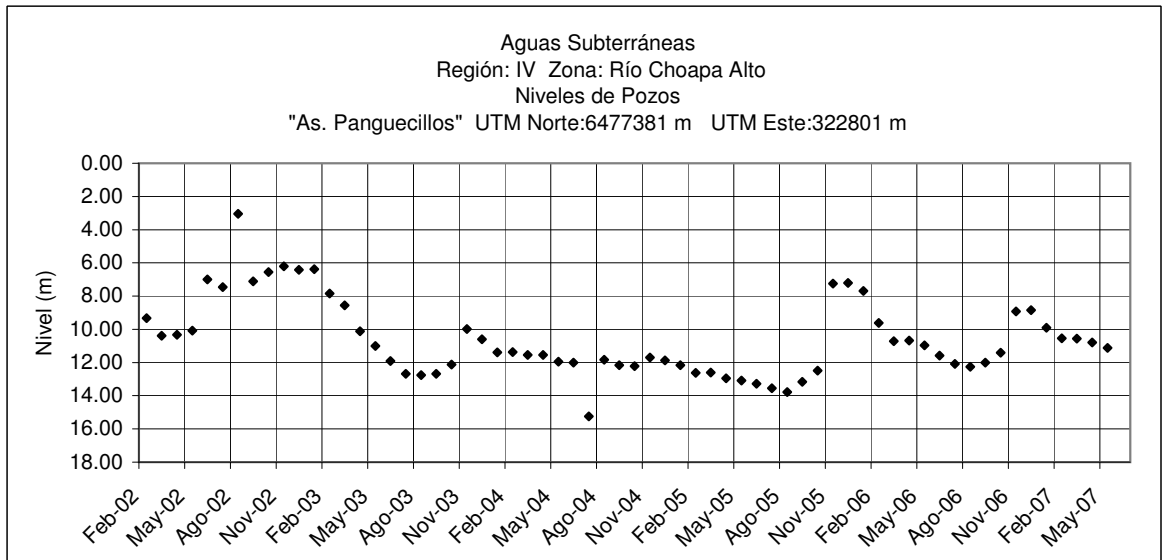
	Jun	Jul	Ago	Sep	Oct	Nov	Dic	Ene	Feb	Mar	Abr	May
2006-2007	.	33.92	33.27	33.45	33.47	33.54	33.65	33.68	33.83	33.95	34.22	34.2



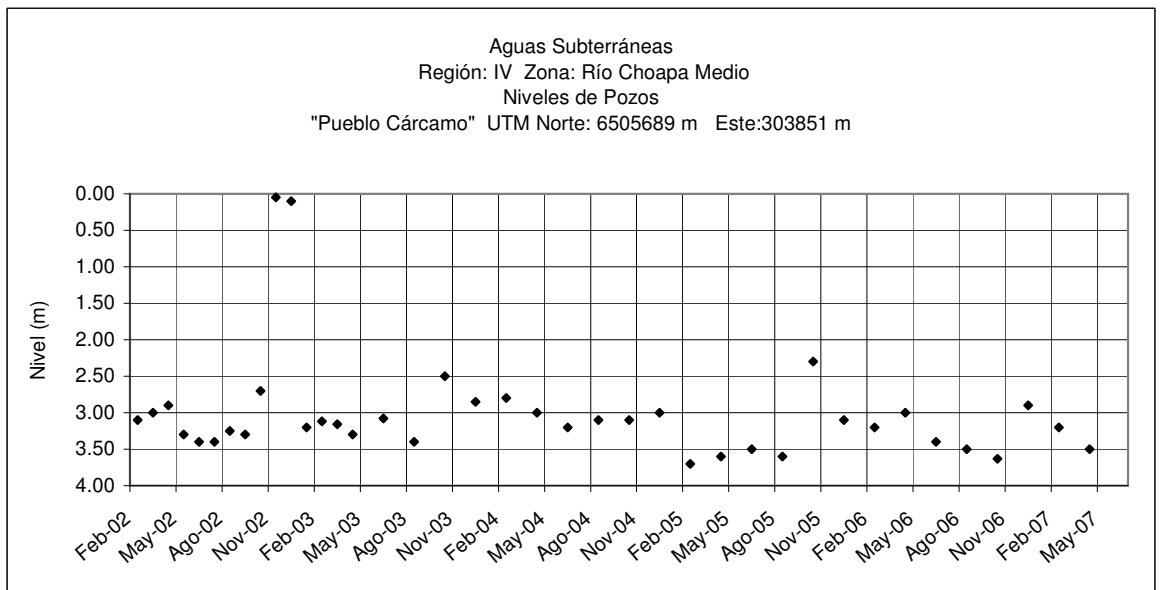
	Jun	Jul	Ago	Sep	Oct	Nov	Dic	Ene	Feb	Mar	Abr	May
2006-2007	1.6	.	1.56	2.4	2.34	2.3	2.41	2.47	1.88	1.68	1.98	1.66



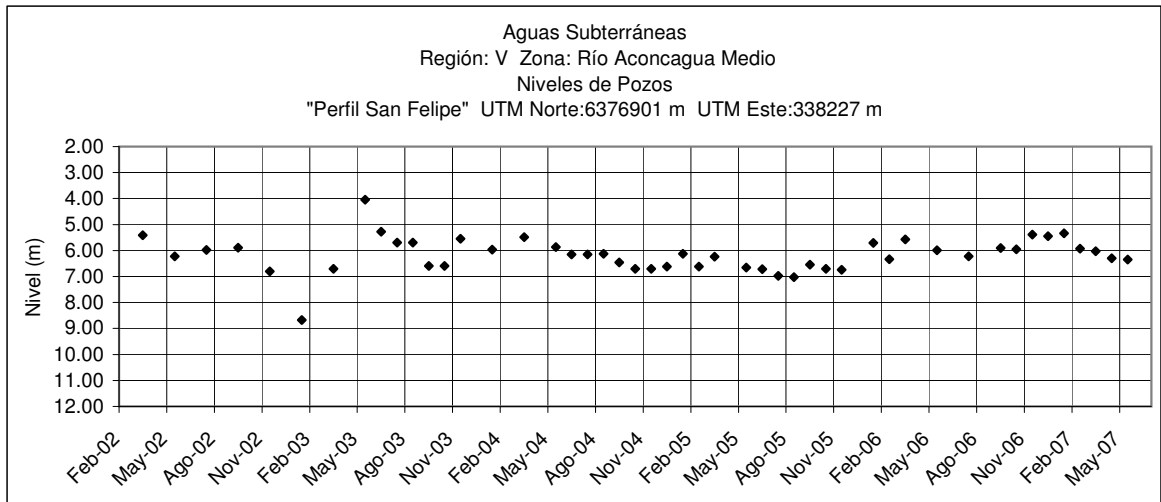
	Jun	Jul	Ago	Sep	Oct	Nov	Dic	Ene	Feb	Mar	Abr	May
2006-2007	4.13		3.22		3.39		3.38		5.37		3.81	



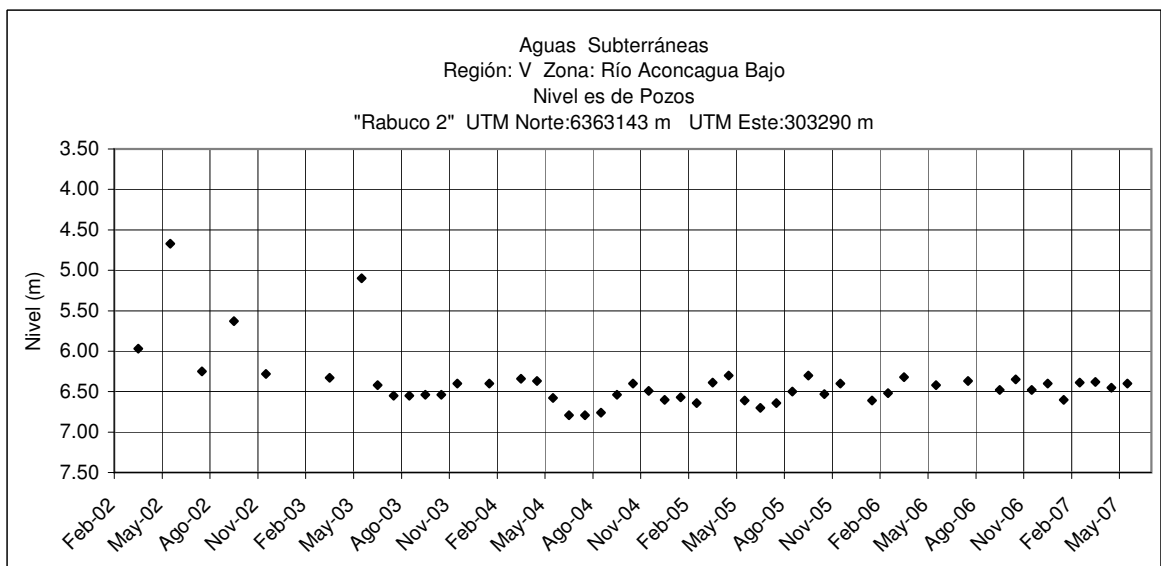
	Jun	Jul	Ago	Sep	Oct	Nov	Dic	Ene	Feb	Mar	Abr	May
2006-2007	11.58	12.08	12.26	12.00	11.40	8.93	8.85	9.90	10.55	10.56	10.80	11.12



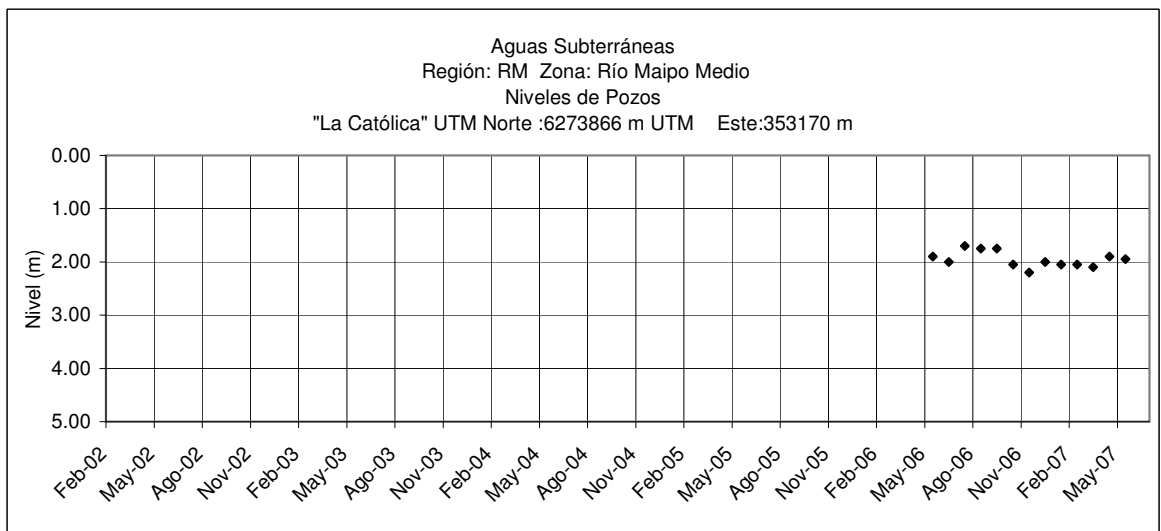
	Jun	Jul	Ago	Sep	Oct	Nov	Dic	Ene	Feb	Mar	Abr	May
2006-2007	3.4		3.5		3.63		2.9		3.2		3.5	



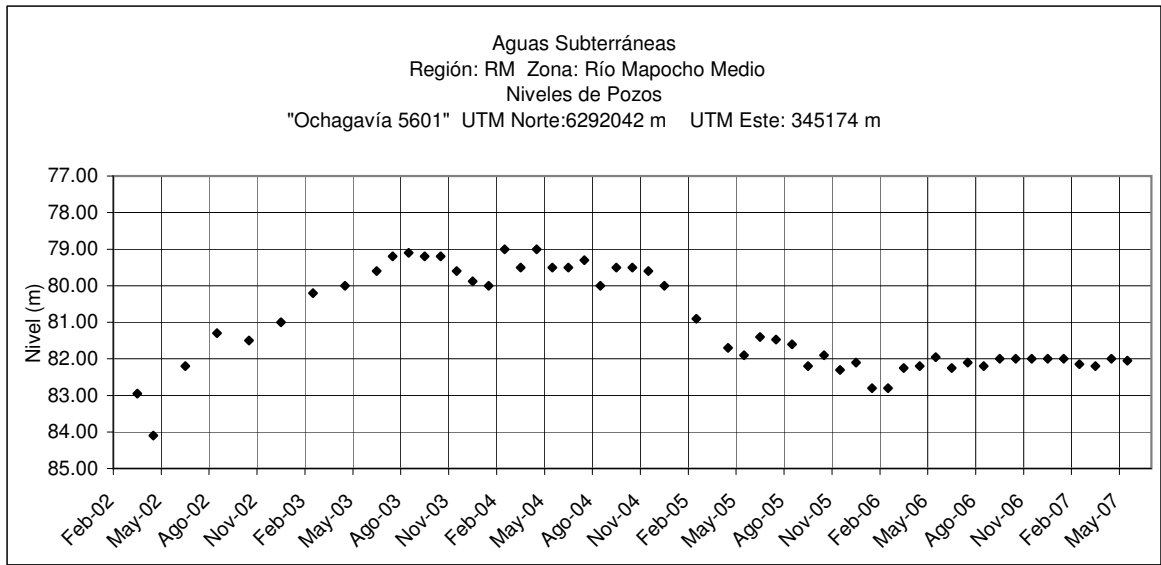
	Jun	Jul	Ago	Sep	Oct	Nov	Dic	Ene	Feb	Mar	Abr	May
2006-2007	.	6.22	.	5.91	5.95	5.39	5.45	5.34	5.93	6.03	6.3	6.35



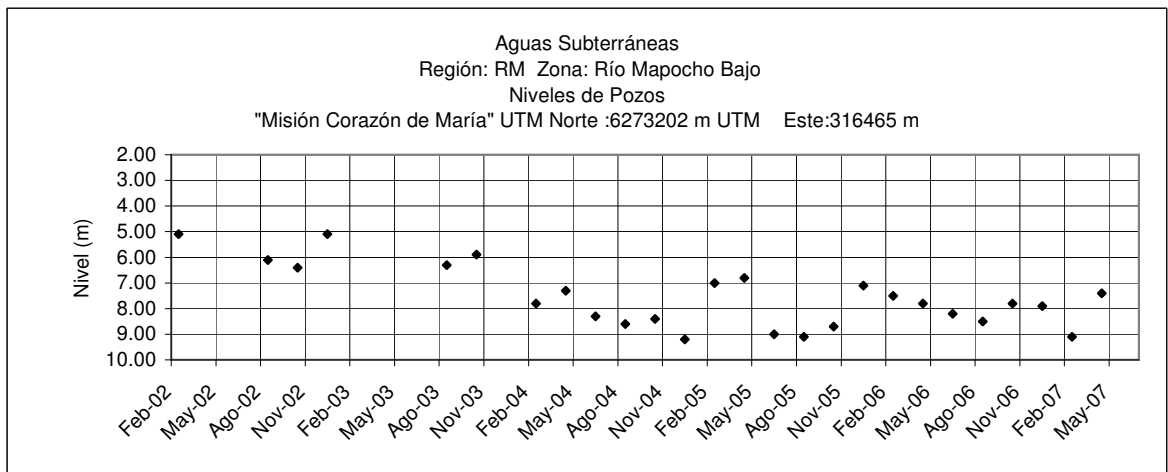
	Jun	Jul	Ago	Sep	Oct	Nov	Dic	Ene	Feb	Mar	Abr	May
2006-2007	.	6.37	.	6.48	6.35	6.48	6.4	6.6	6.39	6.38	6.45	6.4



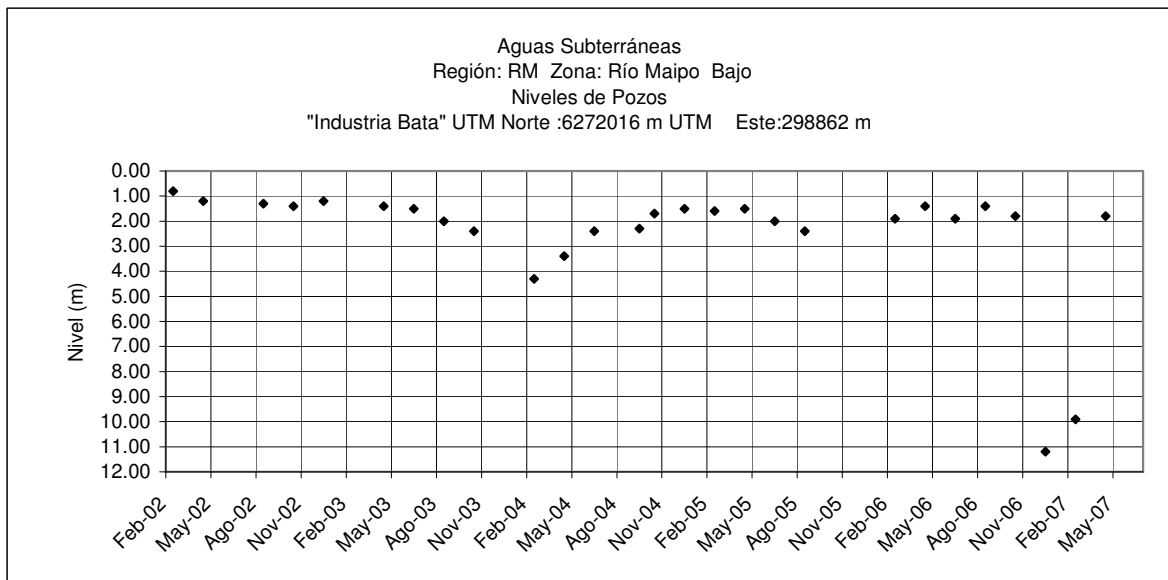
	Jun	Jul	Ago	Sep	Oct	Nov	Dic	Ene	Feb	Mar	Abr	May
2006-2007	2	1.7	1.75	1.75	2.05	2.2	2	2.05	2.05	2.1	1.9	1.95



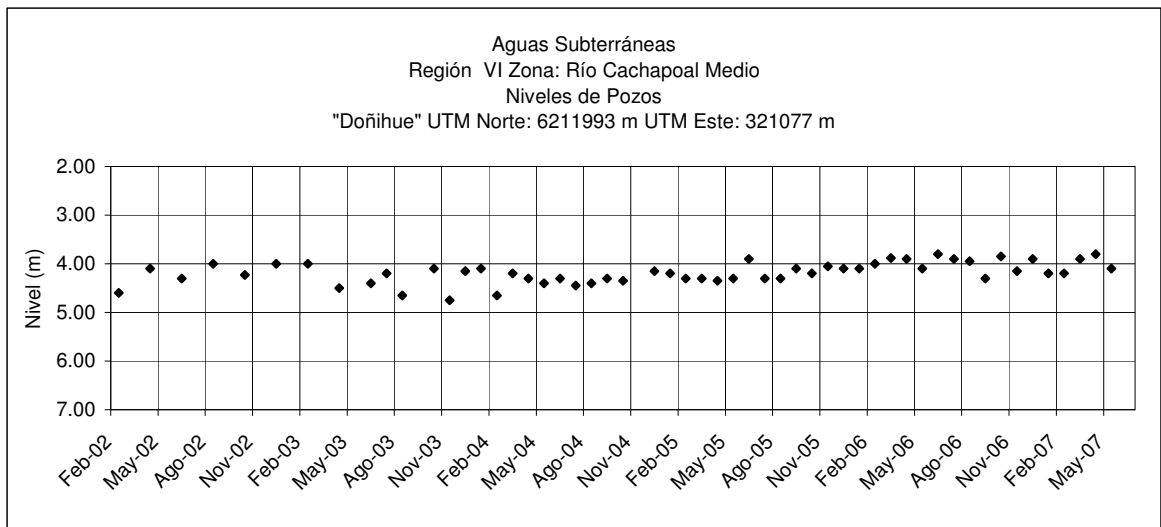
	Jun	Jul	Ago	Sep	Oct	Nov	Dic	Ene	Feb	Mar	Abr	May
2006-2007	82.25	82.10	82.20	82.00	82.00	82.00	82.00	82.00	82.15	82.20	82.00	82.05



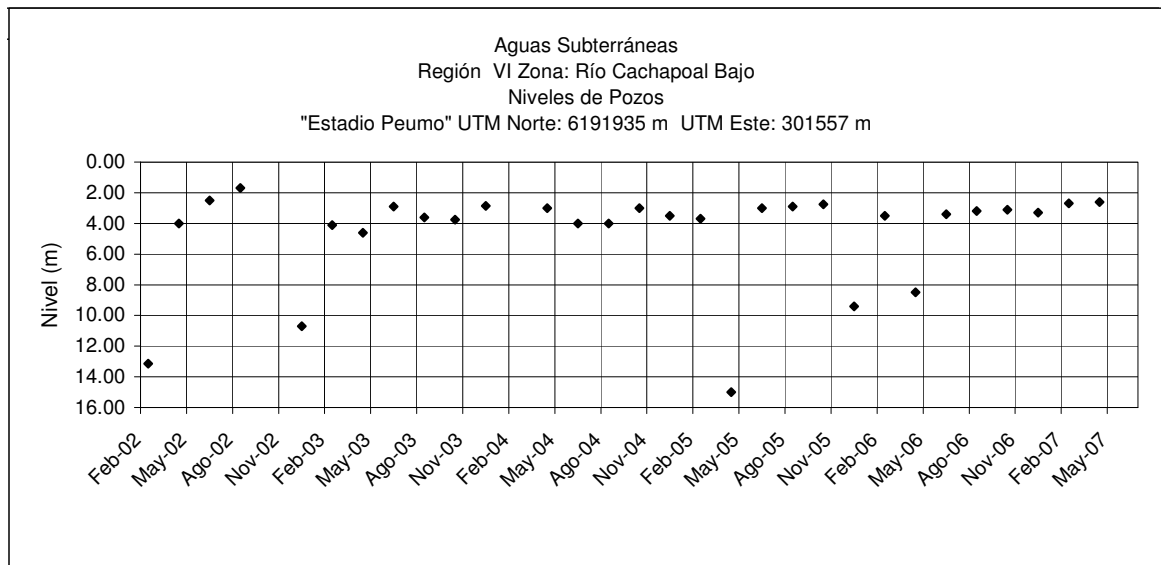
	Jun	Jul	Ago	Sep	Oct	Nov	Dic	Ene	Feb	Mar	Abr	May
2006-2007	8.20		8.50		7.80		7.90		9.10		7.40	



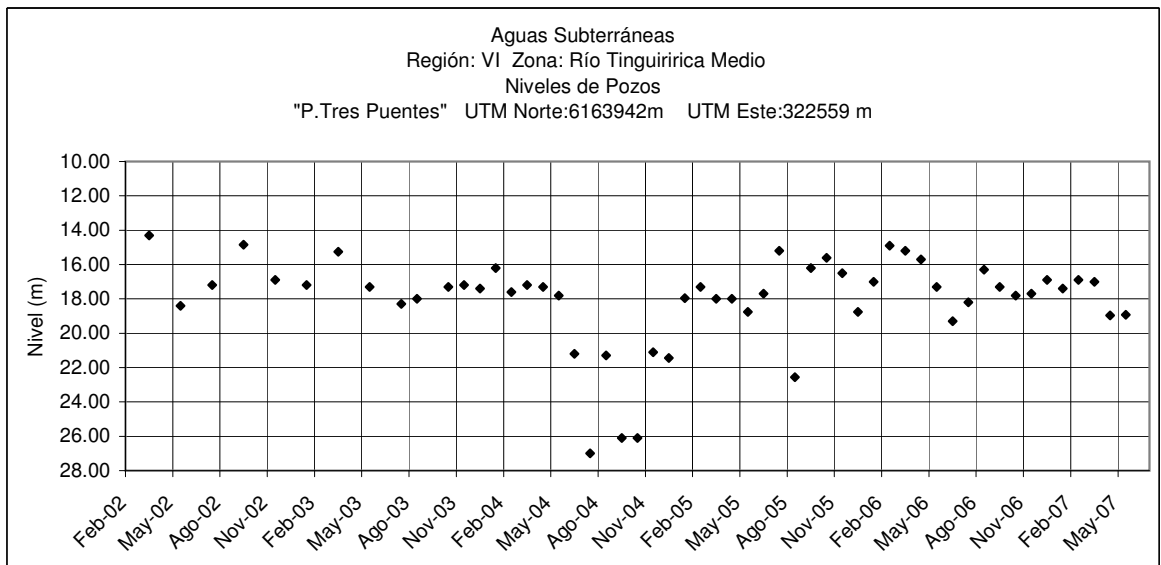
	Jun	Jul	Ago	Sep	Oct	Nov	Dic	Ene	Feb	Mar	Abr	May
2006-2007	1.90		1.40		1.80		11.20		9.90		1.80	



	Jun	Jul	Ago	Sep	Oct	Nov	Dic	Ene	Feb	Mar	Abr	May
2006-2007	3.80	3.90	3.95	4.30	3.85	4.15	3.90	4.20	4.20	3.90	3.80	4.10

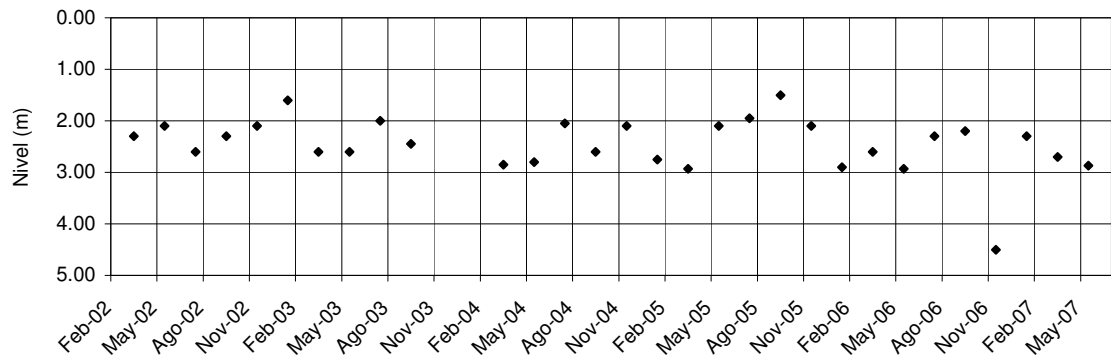


	Jun	Jul	Ago	Sep	Oct	Nov	Dic	Ene	Feb	Mar	Abr	May
2006-2007	3.40		3.20		3.10		3.30		2.70		2.60	



	Jun	Jul	Ago	Sep	Oct	Nov	Dic	Ene	Feb	Mar	Abr	May
2006-2007	19.30	18.20	16.30	17.30	17.80	17.70	16.90	17.40	16.90	17.00	18.97	18.92

Aguas Subterráneas
 Región VI Zona: Río Tinguiririca Bajo
 Niveles de Pozos
 "Asentamiento La Puerta" UTM Norte: 6167913 m UTM Este: 281959 m



	Jun	Jul	Ago	Sep	Oct	Nov	Dic	Ene	Feb	Mar	Abr	May
2006-2007		2.3		2.2		4.5		2.3		2.7		2.87