

Boletín N° : 338
Mes : Junio
Año : 2006

DE : JAVIER NARBONA NARANJO
ING. JEFE DEPARTAMENTO DE HIDROLOGIA

*INFORMACION PLUVIOMETRICA, FLUVIOMETRICA,
ESTADO DE EMBALSES Y AGUAS SUBTERRANEAS*

Contenido :

- 1.- Informe pluviométrico
- 2.- Volúmenes de embalses
- 3.- Informe fluviométrico
- 4.- Informe aguas subterráneas

En Internet (www.dga.cl) se publica: .

- Los informes de este boletín
- Caudales en tiempo real

NOTA: Datos provisorios sujetos a modificaciones posteriores

INFORME PLUVIOMETRICO NACIONAL N°06

ESTACIONES	JUNIO	TOTALES AL 30 DE JUNIO			EXCESO O DÉFICIT (%)
		2006 (mm)	2005 (mm)	PROMEDIO (mm)	
CENTRAL CHAPIQUÍÑA	0.0	155.5	75.0	132.9	17
EMBALSE CONCHI	0.0	33.2	21.5	17.2*	94
CALAMA	0.0	0.7	6.5	3.5	- 80
ANTOFAGASTA	0.0	0.0	0.5	1.1	-100
COPIAPÓ	0.0	0.0	1.8	4.1	-100
EMBALSE LAUTARO	0.0	1.0	15.5	9.8	- 90
VALLENAR	1.0	1.0	1.0	9.3	- 89
RIVADAVIA	4.0	5.5	46.0	27.3	- 80
VICUÑA	3.6	3.6	35.9	28.8	- 87
LA SERENA	21.4	22.3	37.7	24.5	- 9
OVALLE	23.0	23.5	30.7	33.5	- 30
EMBALSE PALOMA	19.5	19.8	46.2	45.8	- 57
COGOTÍ 18	27.0	27.5	47.5	62.6	- 56
HUINTIL	62.1	62.1	66.2	76.9	- 19
COIRÓN	39.5	40.0	91.4	114.9	- 65
VILCUYA	85.5	103.0	334.0	131.4	- 22
SAN FELIPE	68.1	73.6	142.8	76.1	- 3
LAGO PEÑUELAS	190.0	196.5	323.1	239.7	- 18
EMBALSE EL YESO	119.0	151.8	781.1	232.4	- 35
CERRO CALAN	62.4	68.0	283.6	154.7	- 56
SANTIAGO (MOP)	87.5	96.3	263.8	127.5	- 24
RANCAGUA	105.0	172.0	329.3	182.6	- 6
SAN FERNANDO	192.6	292.4	603.0	299.6	- 2
CONVENTO VIEJO	215.5	306.5	639.2	295.6	4
CURICO	234.8	279.5	576.1	305.3	- 8
TALCA	233.7	321.8	499.4	305.4	5
COLORADO	470.5	691.5	1019.7	628.6	10
LINARES	281.3	437.3	600.3	418.0	5
PARRAL	284.0	542.1	551.5	456.9	19
EMBALSE DIGUA	416.4	758.5	870.2	678.6	12
CHILLÁN	346.5	535.5	743.3	466.7	15
CONCEPCIÓN	364.5	670.6	855.5	552.6	21
LOS ÁNGELES	295.2	639.5	727.8	524.0	22
CAÑETE	331.0	855.6	895.9	575.1	49
ANGOL	407.5	785.4	840.4	500.3	57
TEMUCO	359.7	769.5	848.4	572.3	34
VALDIVIA	435.9	1097.4	1342.8	1039.7	6
OSORNO	272.8	708.5	792.7	766.4	- 8
PUERTO MONTT	453.0	1423.3	1250.7	951.6	50
COYHAIQUE	118.7	590.9	763.4	643.8*	- 8
PUNTA ARENAS	64.9	381.6	266.4	226.5	68

Promedios acumulados para el período 1961-1990 (D.G.A)

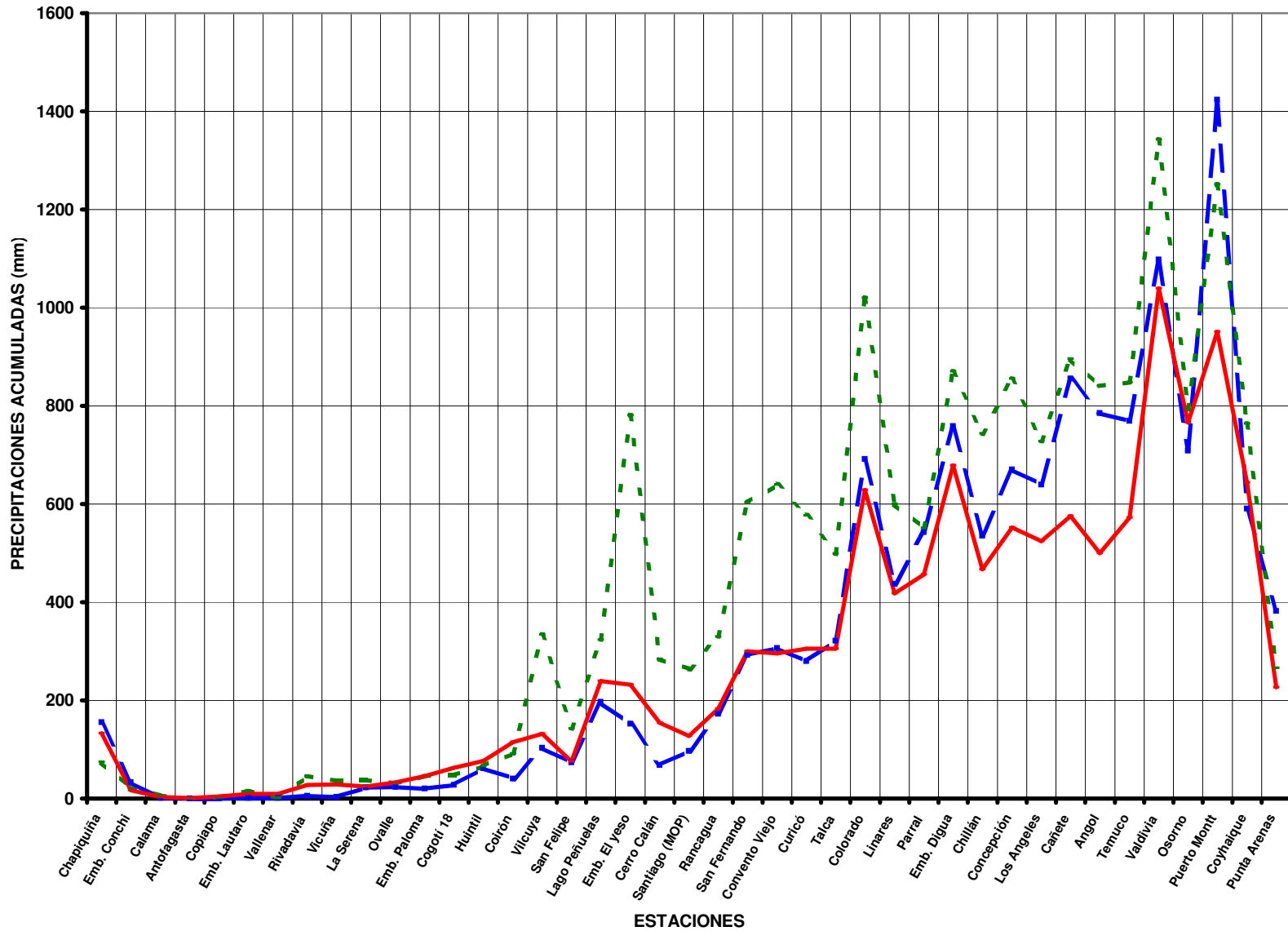
* : Promedios calculados para períodos inferiores a 30 años

TOTALES DE LLUVIA HASTA EL
30 de Junio de 2006

Normal

Año 2006

Año 2005



ESTADO DE EMBALSES

Ultimo día del mes
(Volúmenes en mill-m³)

EMBALSE	REGION	CUENCA	CAPACIDAD	PROMEDIO	Junio	
				HISTORICO MENSUAL	2006	2005
Conchi	II	Loa	22	17	18	17
Lautaro	III	Copiapó	35	13	13	12
Santa Juana	III	Huasco	166	113	166	129
La Laguna	IV	Elqui	40	21	33	27
Puclaro	IV	Elqui	200	82	196	137
Recoleta	IV	Limarí	100	63	97	73
La Paloma	IV	Limarí	748	393	551	437
Cogotí	IV	Limarí	150	73	79	58
Culimo	IV	Quilimarí	10	3.7	0.4	0.0
Corrales	IV	Illapel	50	27	48	32
Peñuelas	V	Peñuelas	95	24	21	29
El Yeso	RM	Maipo	256	178	235	221
Rungue	RM	Maipo	2.2	0.9	0.3	0.6
Rapel	VI	Rapel	695	499	605	432
Colbún	VII	Maule	1544	1150	1017	1253
Lag. Maule	VII	Maule	1420	955	1159	761
Bullileo	VII	Maule	60	31	30	44
Digua	VII	Maule	220	108	93	105
Tutuvén	VII	Maule	15	6.5	10	15
Coihueco	VIII	Itata	29	9	10	13.4
Lago Laja (&)	VIII	Bio-Bio	5582	3338	2622	1943

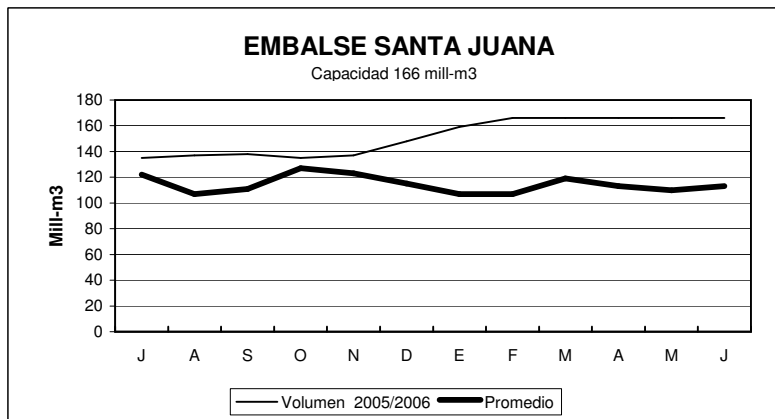
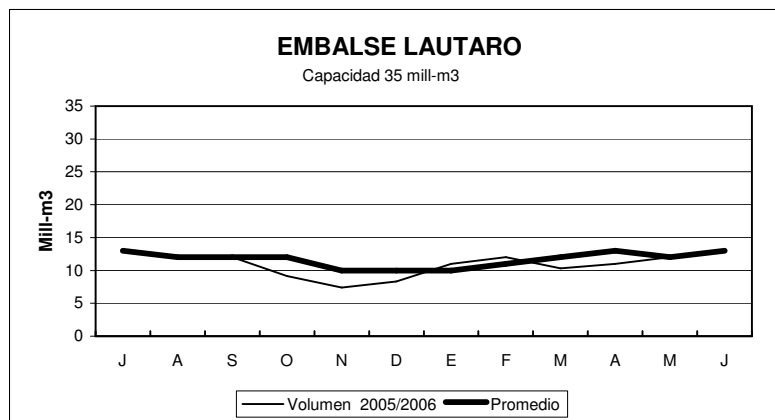
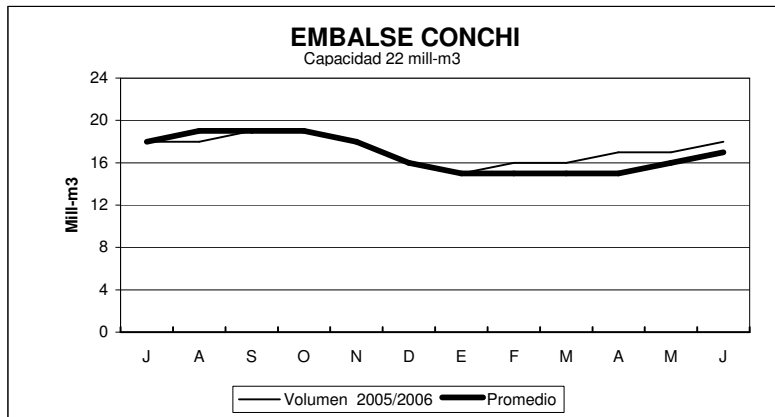
RESUMEN ANUAL

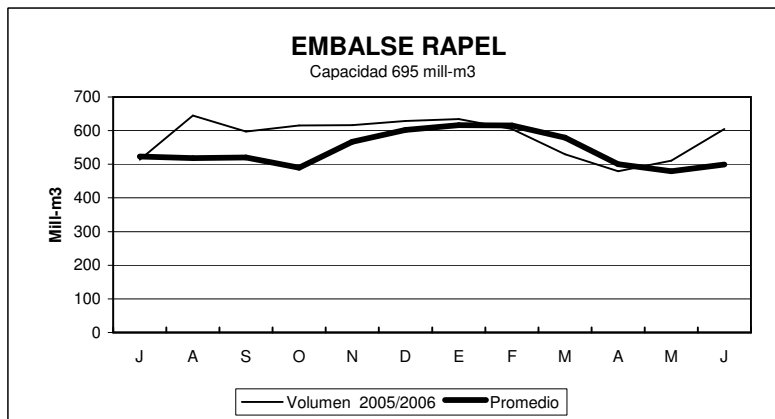
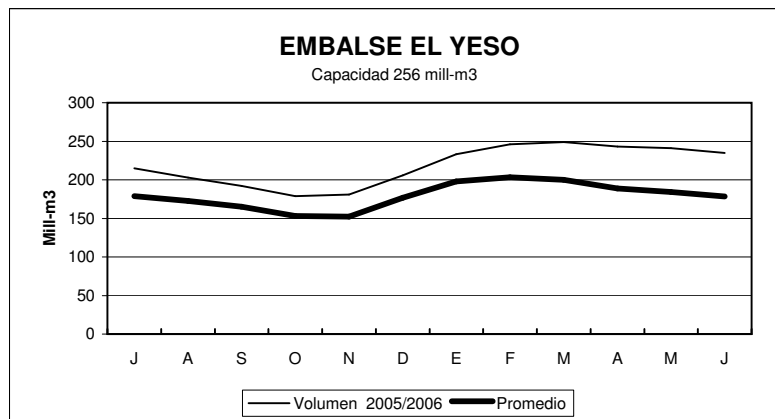
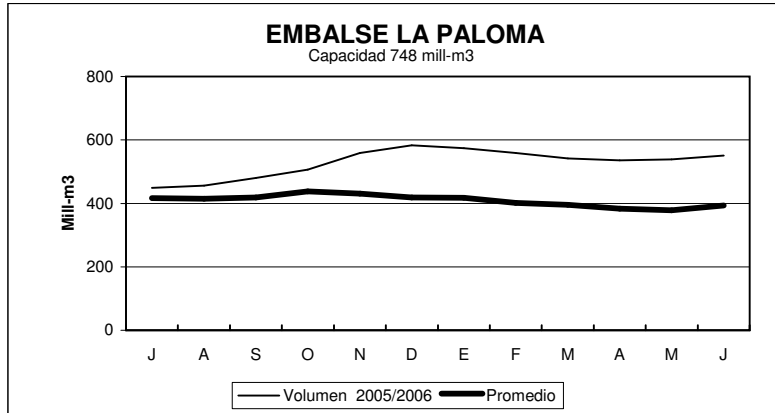
2005-2006

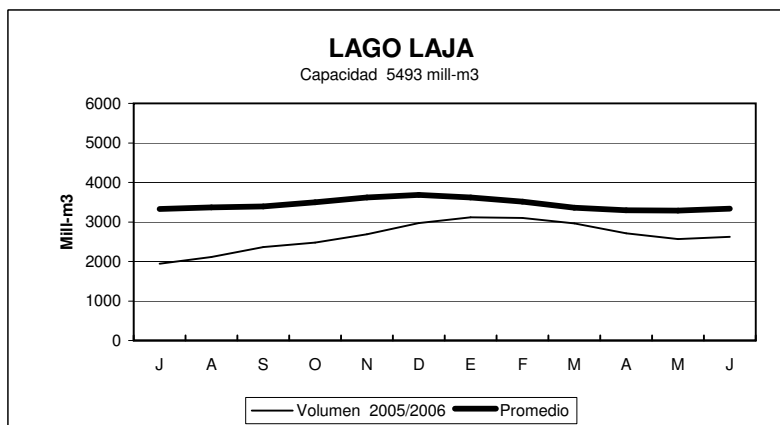
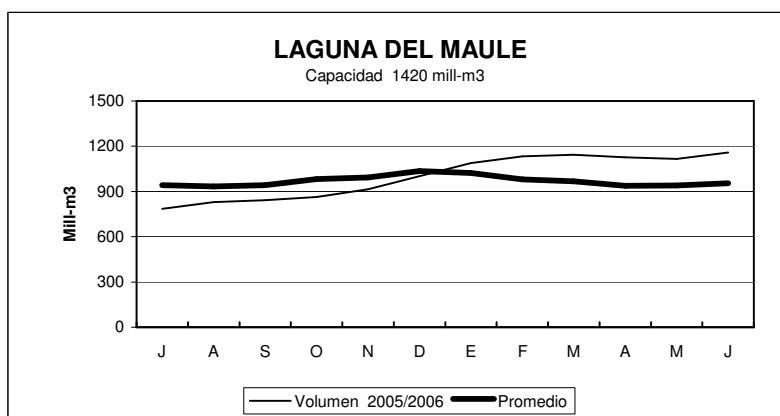
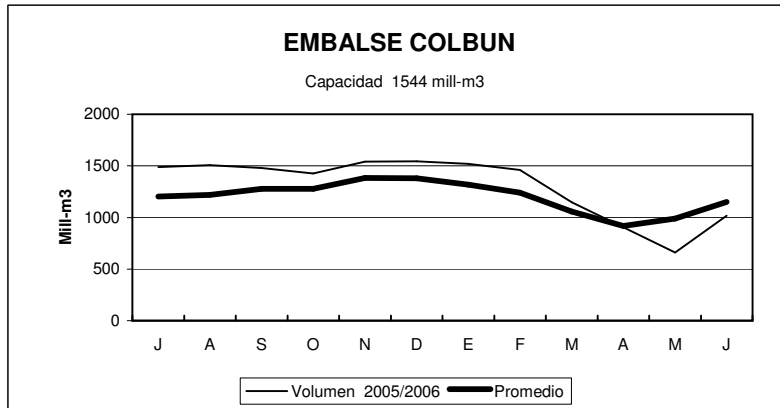
EMBALSE	J	A	S	O	N	D	E	F	M	A	M	J
Conchi	18	18	19	19	18	16	15	16	16	17	17	18
Lautaro	13	12	12	9	7	8	11	12	10	11	12	13
Santa Juana	135	137	138	135	137	148	159	166	166	166	166	166
La Laguna	29	31	32	36	37	38	36	31	28	32	34	33
Puclaro	140	140	141	142	155	189	200	200	200	200	200	196
Recoleta	75	77	80	81	86	91	91	100	92	94	95	97
La Paloma	449	456	480	506	559	583	574	559	542	536	539	551
Cogotí	61	63	73	80	100	104	98	92	86	82	79	79
Culimo	0.0	1.3	3.1	3.7	2.9	2.4	1.9	1.2	0.4	0.1	0.4	0.4
Corrales	32	37	42	43	44	46	49	49	49	48	48	48
Peñuelas	30	35	35	34	32	29	27	24	22	21	20	21
El Yeso	215	203	192	179	181	206	233	246	249	243	241	235
Rungue	1.2	2.0	2.1	2.0	1.9	2.2	1.0	0.6	0.3	0.2	0.2	0.3
Rapel	514	645	597	615	616	629	634	605	530	479	511	605
Colbún	1488	1506	1480	1425	1542	1544	1519	1462	1148	905	661	1017
Lag. Maule	786	829	843	863	914	1001	1088	1134	1144	1127	1115	1159
Bullileo	60	60	60	60	60	60	49	24	0	0	7	30
Digua	160	219	220	220	199	220	93	34	11	8.6	2.7	93
Tutuvén	13	15	13	12	12	15	6.1	4	2.0	3.4	3.0	10
Coihueco	24	28.3	29	29	29	28	22	14	6.6	3.9	6	10
Lago Laja (&)	1943	2110	2365	2480	2690	2970	3119	3104	2966	2709	2566	2622

(&) : Volumen sobre cota 1300 msnm

ESTADO DE EMBALSES



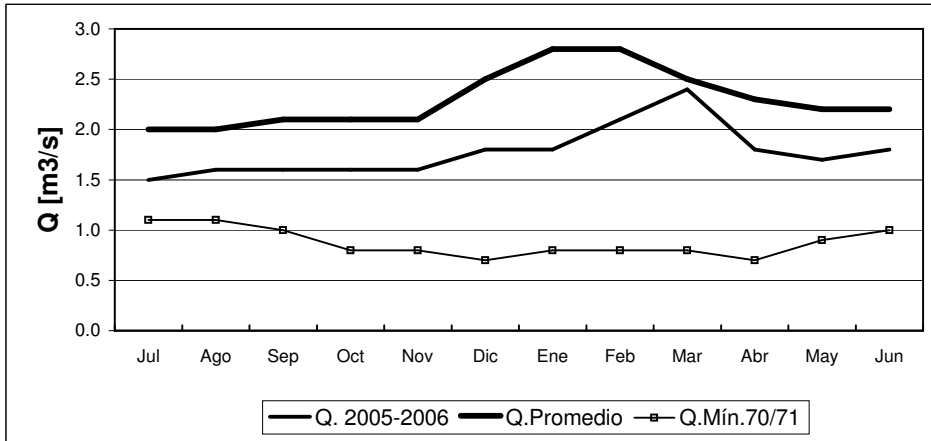




INFORME FLUVIOMETRICO
Caudales medios mensuales en m3/seg

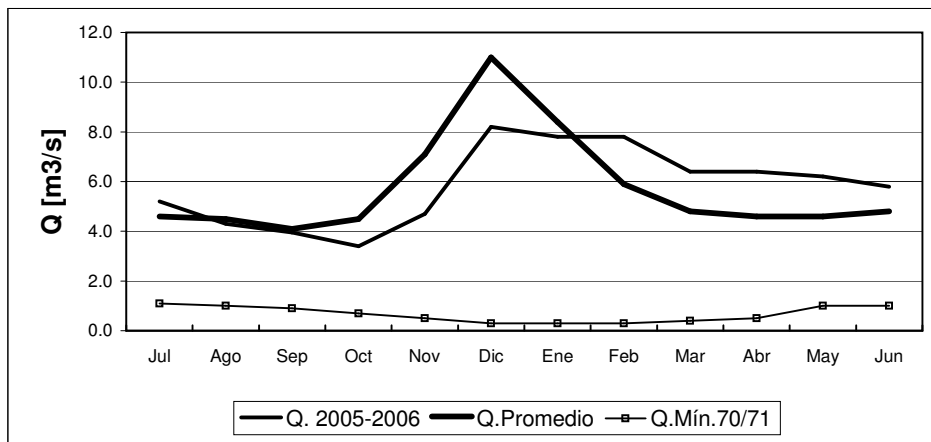
Jun-06

RIO COPIAPO EN LA PUERTA



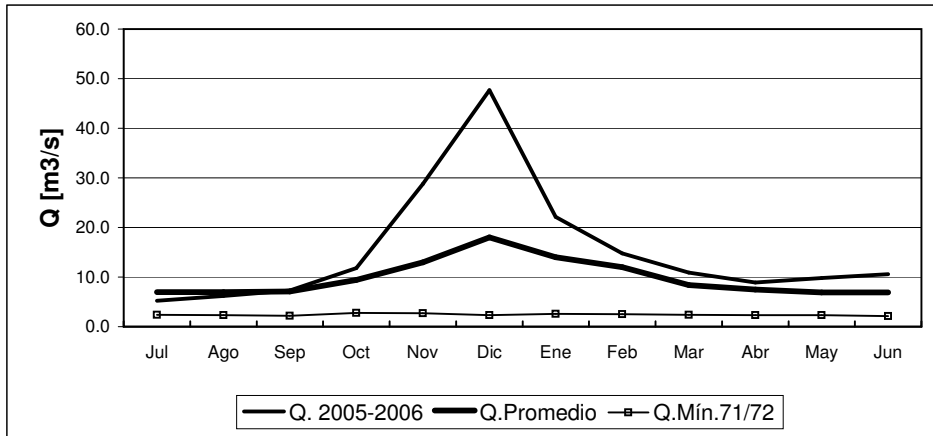
	Jul	Ago	Sep	Oct	Nov	Dic	Ene	Feb	Mar	Abr	May	Jun
Q. 2005-2006	1.5	1.6	1.6	1.6	1.6	1.8	1.8	2.1	2.4	1.8	1.7	1.8
Q. Promedio	2.0	2.0	2.1	2.1	2.1	2.5	2.8	2.8	2.5	2.3	2.2	2.2
Q. Mín.70/71	1.1	1.1	1.0	0.8	0.8	0.7	0.8	0.8	0.8	0.7	0.9	1.0

RIO HUASCO EN ALGODONES



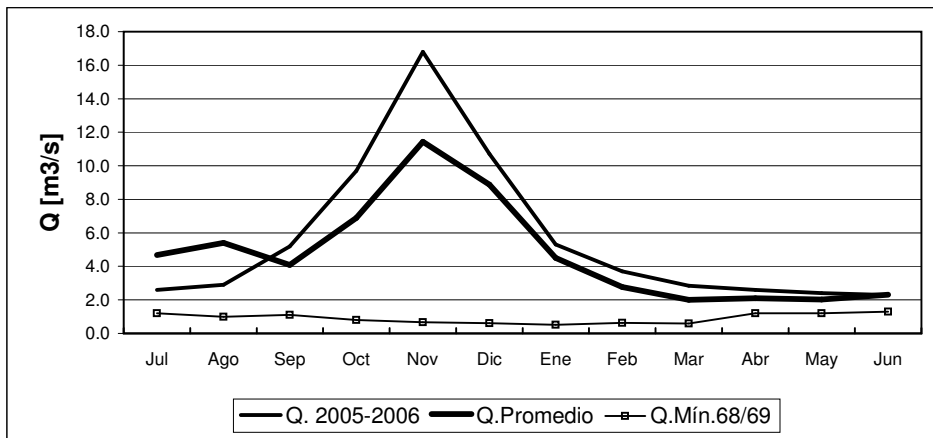
	Jul	Ago	Sep	Oct	Nov	Dic	Ene	Feb	Mar	Abr	May	Jun
Q. 2005-2006	5.2	4.3	4.0	3.4	4.7	8.2	7.8	7.8	6.4	6.4	6.2	5.8
Q. Promedio	4.6	4.5	4.1	4.5	7.1	11.0	8.4	5.9	4.8	4.6	4.6	4.8
Q. Mín.70/71	1.1	1.0	0.9	0.7	0.5	0.3	0.3	0.3	0.4	0.5	1.0	1.0

RIO ELQUI EN ALGARROBAL



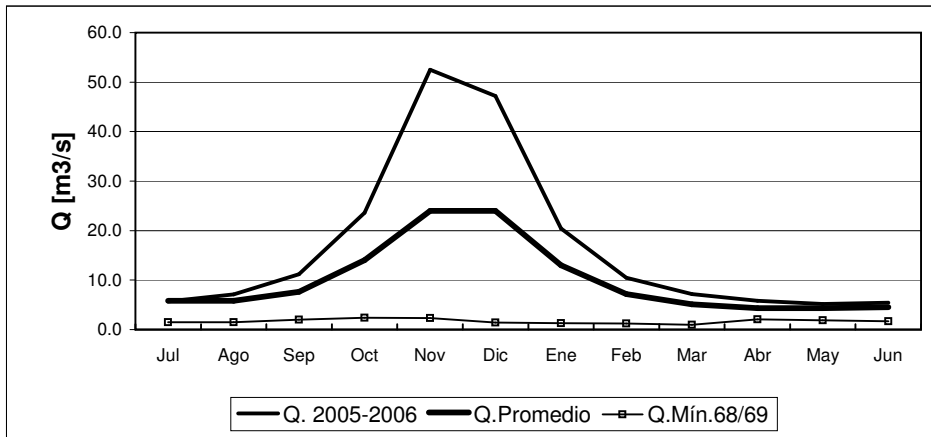
	Jul	Ago	Sep	Oct	Nov	Dic	Ene	Feb	Mar	Abr	May	Jun
Q. 2005-2006	5.2	6.2	7.3	11.8	28.8	47.7	22.1	14.8	10.9	8.9	9.8	10.6
Q.Promedio	7.0	7.0	7.1	9.4	13.0	18.0	14.0	12.0	8.4	7.5	6.9	6.9
Q.Mín.71/72	2.4	2.3	2.2	2.8	2.7	2.3	2.6	2.5	2.4	2.3	2.3	2.1

RIO GRANDE EN LAS RAMADAS



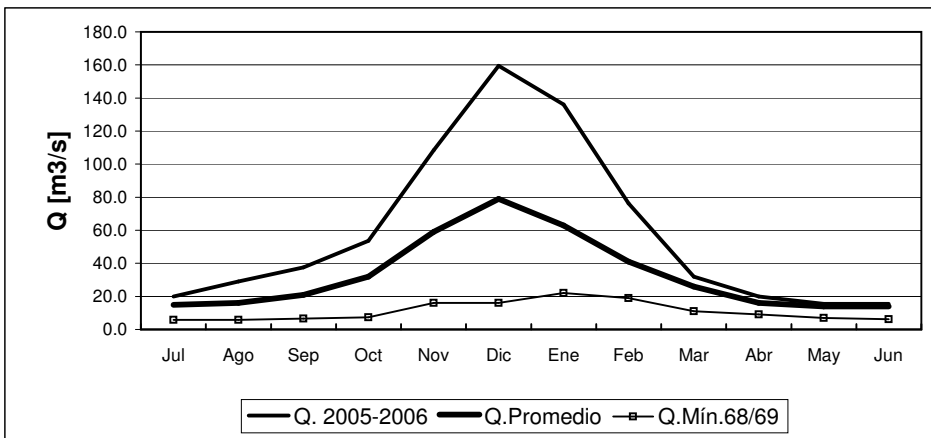
	Jul	Ago	Sep	Oct	Nov	Dic	Ene	Feb	Mar	Abr	May	Jun
Q. 2005-2006	2.6	2.9	5.2	9.7	16.8	10.7	5.3	3.7	2.9	2.6	2.4	2.3
Q.Promedio	4.7	5.4	4.1	6.9	11.4	8.9	4.5	2.8	2.0	2.1	2.0	2.3
Q.Mín.68/69	1.2	1.0	1.1	0.8	0.7	0.6	0.5	0.6	0.6	1.2	1.2	1.3

RIO CHOAPA EN CUNCUMEN



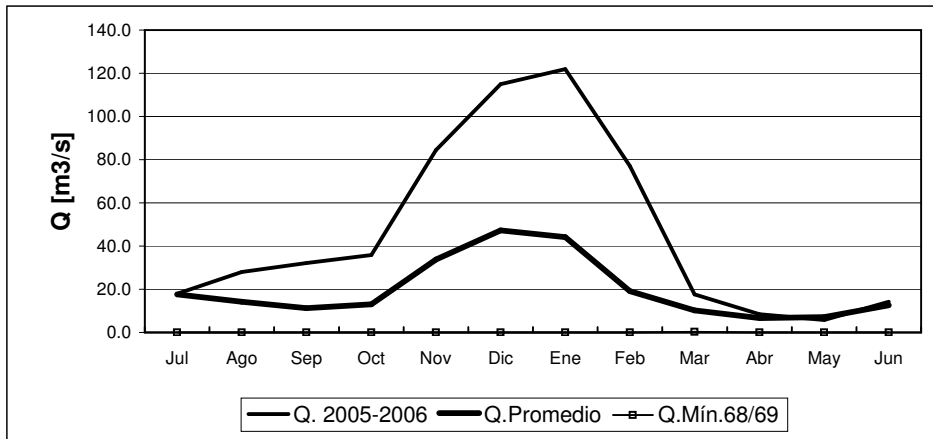
	Jul	Ago	Sep	Oct	Nov	Dic	Ene	Feb	Mar	Abr	May	Jun
Q. 2005-2006	5.7	7.1	11.2	23.6	52.5	47.2	20.4	10.5	7.2	5.8	5.2	5.4
Q.Promedio	5.8	5.8	7.6	14.0	24.0	24.0	13.0	7.2	5.1	4.3	4.3	4.5
Q.Mín.68/69	1.5	1.5	2.0	2.4	2.3	1.4	1.3	1.2	1.0	2.1	1.9	1.7

RIO ACONCAGUA EN CHACABUQUITO



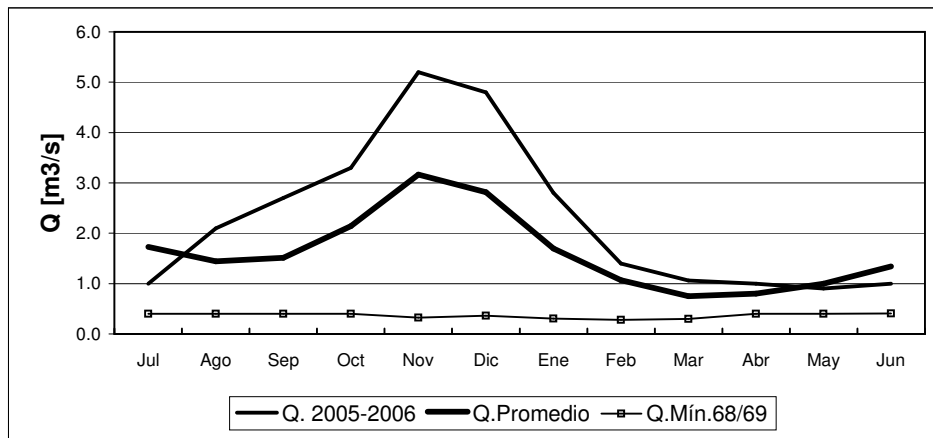
	Jul	Ago	Sep	Oct	Nov	Dic	Ene	Feb	Mar	Abr	May	Jun
Q. 2005-2006	20.0	29.1	37.5	53.7	108.4	159.5	136.0	76.3	31.9	20.0	15.5	15.4
Q.Promedio	15.0	16.0	21.0	32.0	59.0	79.0	63.0	41.0	26.0	16.0	14.0	14.0
Q.Mín.68/69	5.9	5.9	6.6	7.4	16.0	16.0	22.0	19.0	11.0	9.1	6.9	6.2

RIO ACONCAGUA EN SAN FELIPE



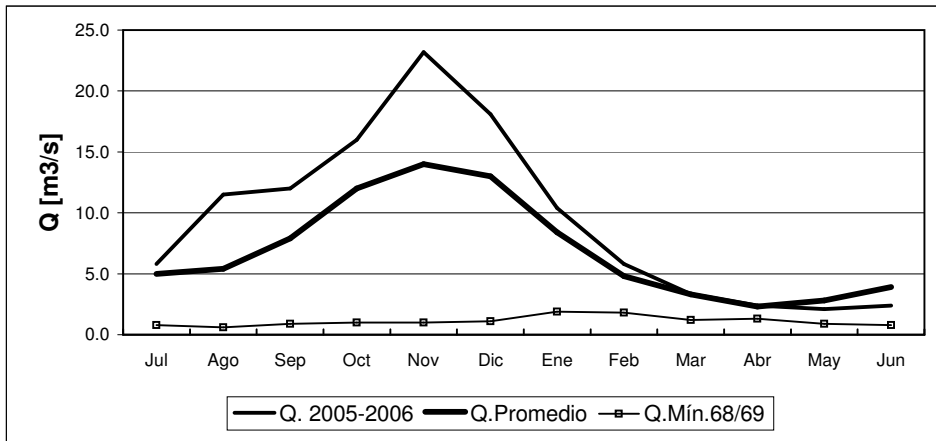
	Jul	Ago	Sep	Oct	Nov	Dic	Ene	Feb	Mar	Abr	May	Jun
Q. 2005-2006	18.0	28	32.2	35.8	84.4	115.0	122	77	17.6	8.5	5.8	14.2
Q.Promedio	17.6	14.2	11.3	13.0	33.8	47.3	44.1	19.1	10.2	6.7	7.1	12.7
Q.Mín.68/69	0.0	0.0	0.0	0.0	0.0	0.0	0.0	0.0	0.3	0.0	0.0	0.0

ESTERO ARRAYAN EN LA MONTOSA



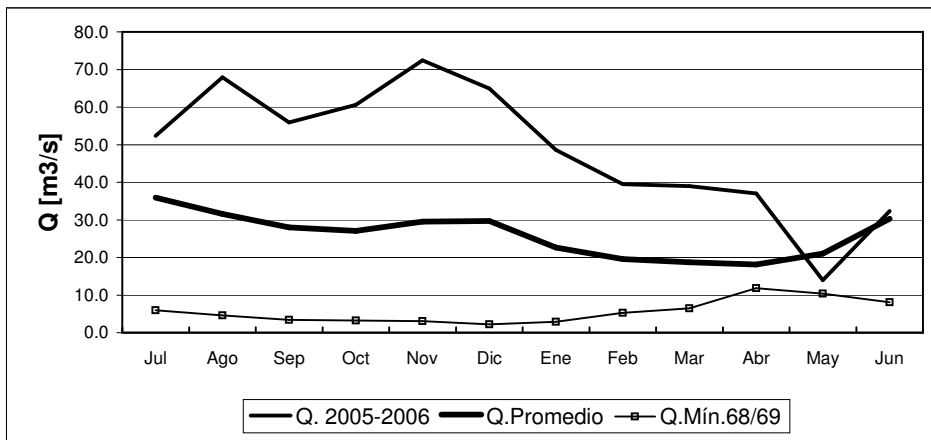
	Jul	Ago	Sep	Oct	Nov	Dic	Ene	Feb	Mar	Abr	May	Jun
Q. 2005-2006	1.0	2.1	2.7	3.3	5.2	4.8	2.8	1.4	1.1	1.0	0.9	1.0
Q.Promedio	1.7	1.4	1.5	2.1	3.2	2.8	1.7	1.1	0.8	0.8	1.0	1.3
Q.Mín.68/69	0.4	0.4	0.4	0.4	0.3	0.4	0.3	0.3	0.3	0.4	0.4	0.4

RIO MAPOCHO EN LOS ALMENDROS



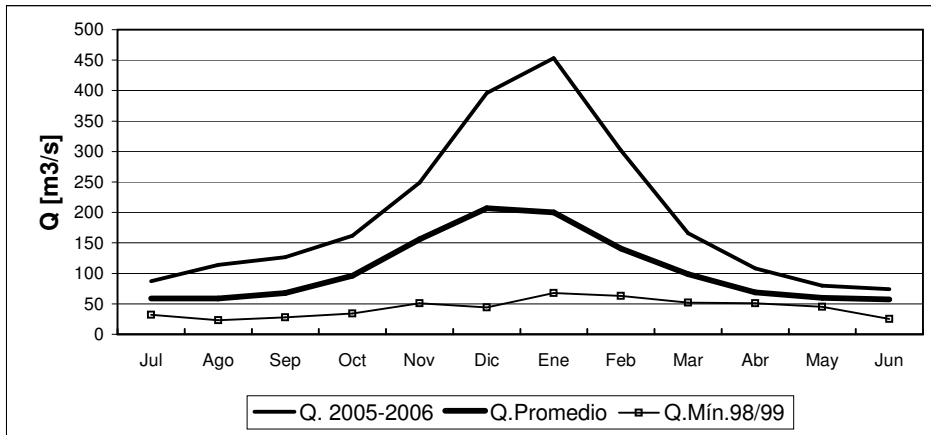
	Jul	Ago	Sep	Oct	Nov	Dic	Ene	Feb	Mar	Abr	May	Jun
Q. 2005-2006	5.8	11.5	12.0	16.0	23.2	18.1	10.4	5.8	3.3	2.4	2.1	2.4
Q. Promedio	5.0	5.4	7.9	12.0	14.0	13.0	8.4	4.8	3.3	2.3	2.8	3.9
Q. Mín. 68/69	0.8	0.6	0.9	1.0	1.0	1.1	1.9	1.8	1.2	1.3	0.9	0.8

RIO MAPOCHO EN RINCONADA DE MAIPU



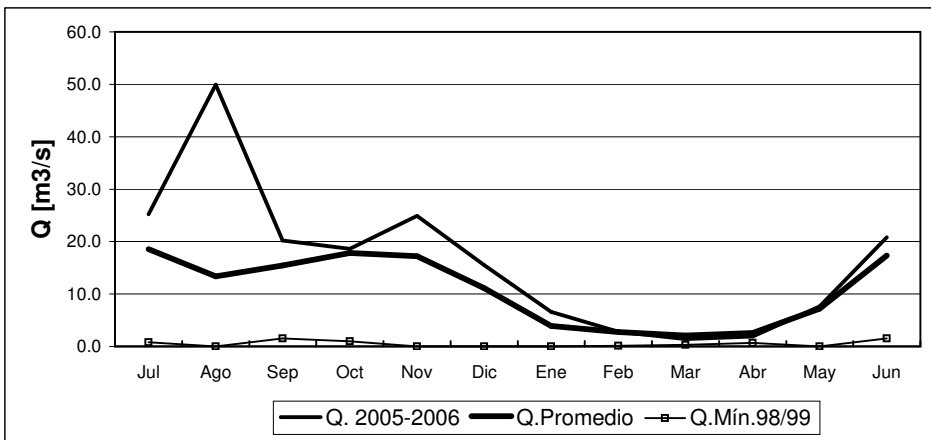
	Jul	Ago	Sep	Oct	Nov	Dic	Ene	Feb	Mar	Abr	May	Jun
Q. 2005-2006	52.3	67.9	55.9	60.6	72.4	64.9	48.6	39.5	39.0	37.0	14.0	32.3
Q. Promedio	35.9	31.6	28.0	27.1	29.5	29.7	22.6	19.6	18.7	18.1	21.0	30.3
Q. Mín. 68/69	6.0	4.6	3.4	3.2	3.1	2.2	2.9	5.3	6.5	11.8	10.4	8.1

RIO MAIPO EN EL MANZANO



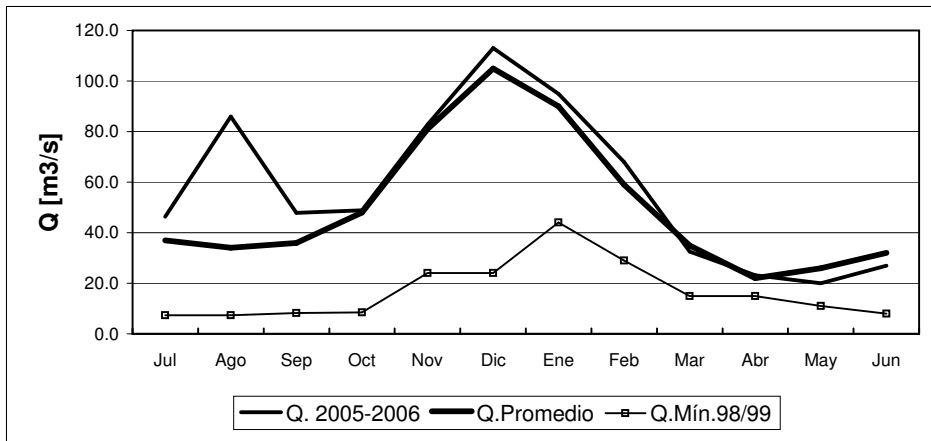
	Jul	Ago	Sep	Oct	Nov	Dic	Ene	Feb	Mar	Abr	May	Jun
Q. 2005-2006	87	114	126	162	249	396	453	302	166	108	80	74
Q. Promedio	59	59	68	96	156	207	200	141	99	69	60	57
Q. Mín.98/99	32	23	28	34	51	44	68	63	52	51	45	25

RIO CLARO EN EL VALLE 2



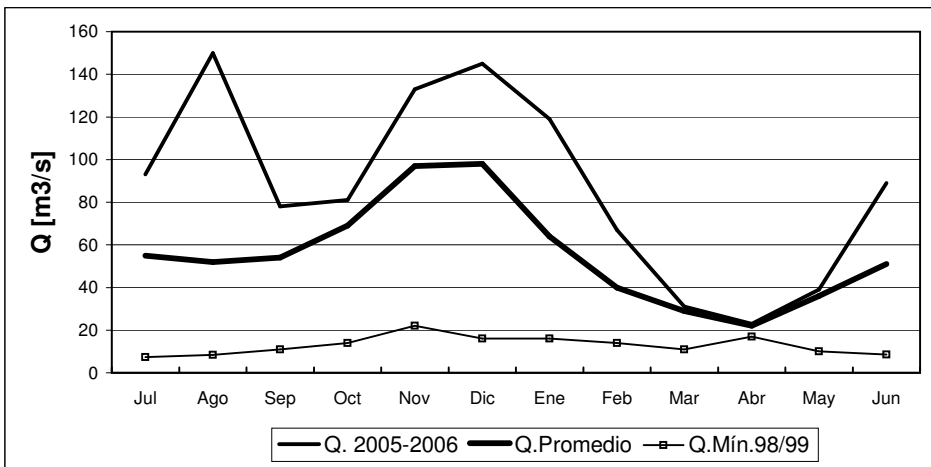
	Jul	Ago	Sep	Oct	Nov	Dic	Ene	Feb	Mar	Abr	May	Jun
Q. 2005-2006	25.2	49.9	20.2	18.6	24.9	15.5	6.6	2.8	1.4	1.9	7.6	20.8
Q. Promedio	18.6	13.4	15.5	17.9	17.2	11.1	3.9	2.7	2.1	2.6	7.2	17.3
Q. Mín.98/99	0.8	0.0	1.5	1.0	0.0	0.0	0.0	0.1	0.3	0.7	0.0	1.5

RIO TINGUIRIRICA BAJO BRIONES



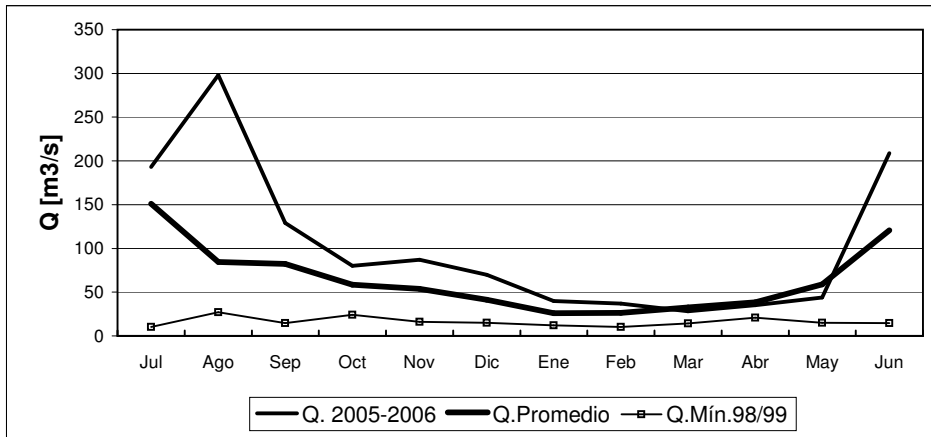
	Jul	Ago	Sep	Oct	Nov	Dic	Ene	Feb	Mar	Abr	May	Jun
Q. 2005-2006	46.3	86.0	47.9	48.9	82.8	113.0	95.0	68.0	32.5	23.2	20.0	27.0
Q.Promedio	37.0	34.0	36.0	48.0	81.0	105.0	90.0	59.0	35.0	22.0	26.0	32.0
Q.Mín.98/99	7.4	7.4	8.2	8.5	24.0	24.0	44.0	29.0	15.0	15.0	11.0	8.0

RIO TENO DESPUES DE JUNTA



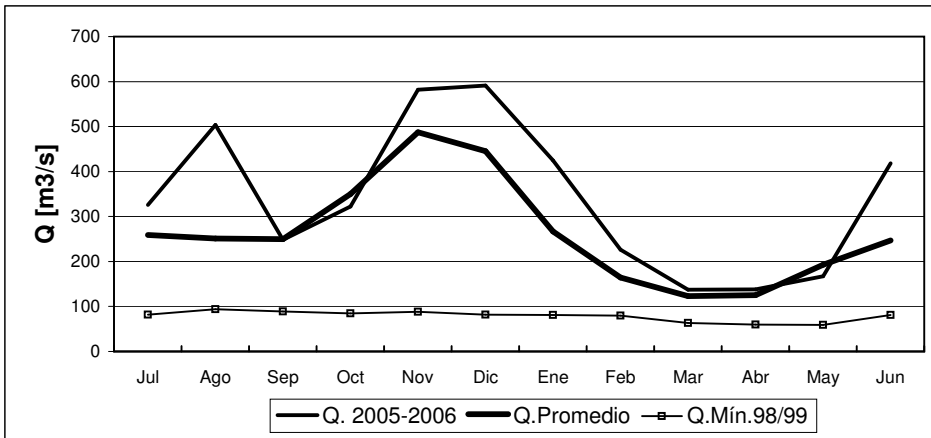
	Jul	Ago	Sep	Oct	Nov	Dic	Ene	Feb	Mar	Abr	May	Jun
Q. 2005-2006	93	150	78	81	133	145	119	67	31	23	39	89
Q.Promedio	55	52	54	69	97	98	64	40	29	22	36	51
Q.Mín.98/99	7.4	8.4	11	14	22	16	16	14	11	17	10	8.6

RIO CLARO EN RAUQUEN



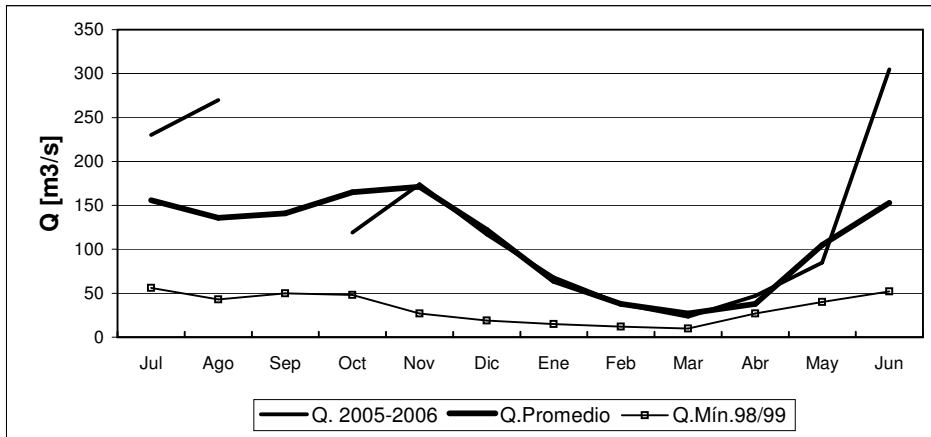
	Jul	Ago	Sep	Oct	Nov	Dic	Ene	Feb	Mar	Abr	May	Jun
Q. 2005-2006	193	298	129	80	87	70	40	37	28	35	44	209
Q.Promedio	151	84	82	58	54	41	26	26	33	39	59	121
Q.Mín.98/99	10	27	15	24	16	15	12	10	14	21	15	15

RIO MAULE EN ARMERILLO



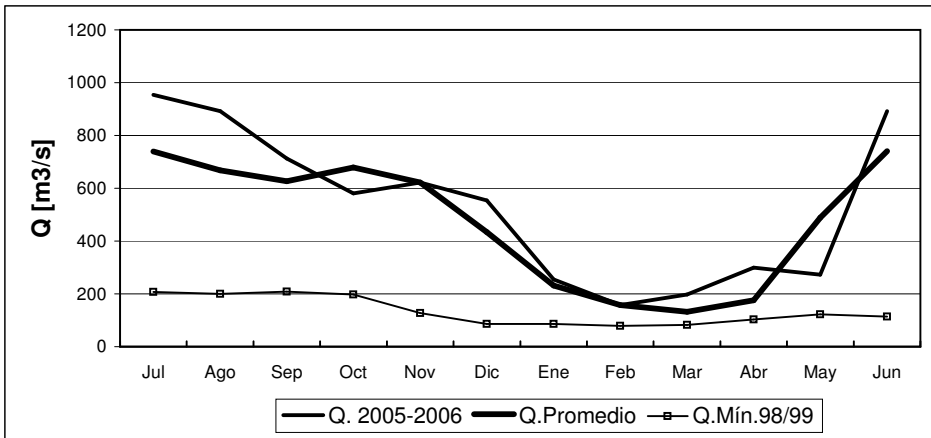
	Jul	Ago	Sep	Oct	Nov	Dic	Ene	Feb	Mar	Abr	May	Jun
Q. 2005-2006	326	504	248	322	582	591	425	226	137	138	167	418
Q.Promedio	259	251	250	350	487	445	267	164	123	125	193	247
Q.Mín.98/99	82	94	89	85	88	82	81	80	63	60	59	81

RIO ÑUBLE EN SAN FABIAN



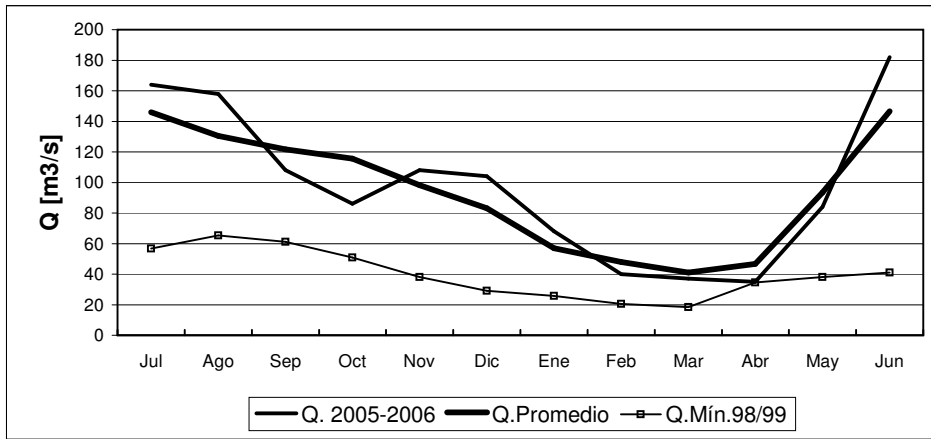
	Jul	Ago	Sep	Oct	Nov	Dic	Ene	Feb	Mar	Abr	May	Jun
Q. 2005-2006	230	270	141	119	174	117	68	38	23	47	85	305
Q. Promedio	156	136	141	165	171	122	64	38	27	38	105	153
Q. Mín.98/99	56	43	50	48	27	19	15	12	10	27	40	52

RIO BIO-BIO EN RUCALHUE



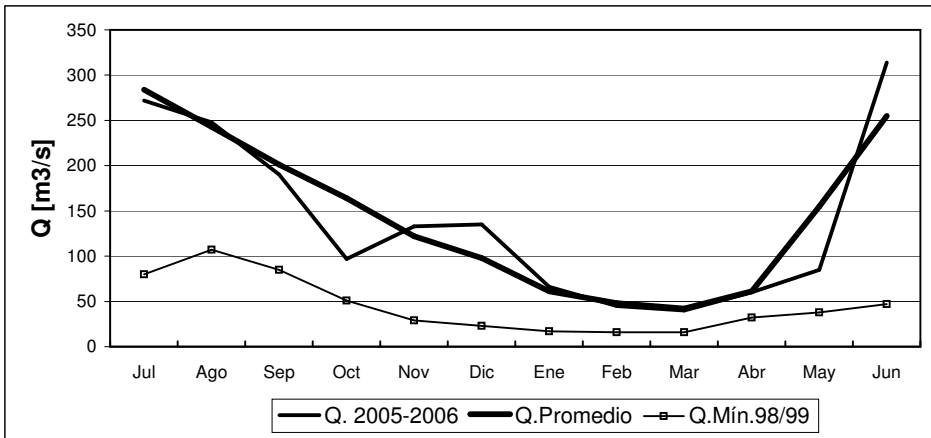
	Jul	Ago	Sep	Oct	Nov	Dic	Ene	Feb	Mar	Abr	May	Jun
Q. 2005-2006	954	892	713	581	622	554	255	157	198	300	273	892
Q. Promedio	740	668	627	679	622	434	231	158	132	176	489	741
Q. Mín.98/99	207	200	208	197	127	86	86	79	82	103	122	114

RIO CAUTIN EN RARI-RUCA



	Jul	Ago	Sep	Oct	Nov	Dic	Ene	Feb	Mar	Abr	May	Jun
Q. 2005-2006	164	158	108	86	108	104	68	40	37	35	84	182
Q. Promedio	146	131	122	116	98	83	57	48	41	47	93	147
Q. Mín.98/99	57	65	61	51	38	29	26	21	19	35	38	41

RIO CAUTIN EN CAJON

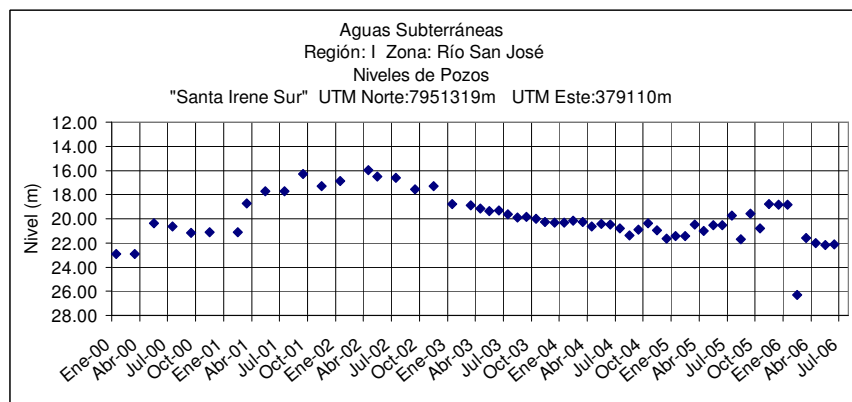


	Jul	Ago	Sep	Oct	Nov	Dic	Ene	Feb	Mar	Abr	May	Jun
Q. 2005-2006	272	248	190	97	133	135	66	45	40	60	85	314
Q. Promedio	284	243	201	164	122	98	61	48	42	61	155	255
Q. Mín.98/99	80	107	85	51	29	23	17	16	16	32	38	47

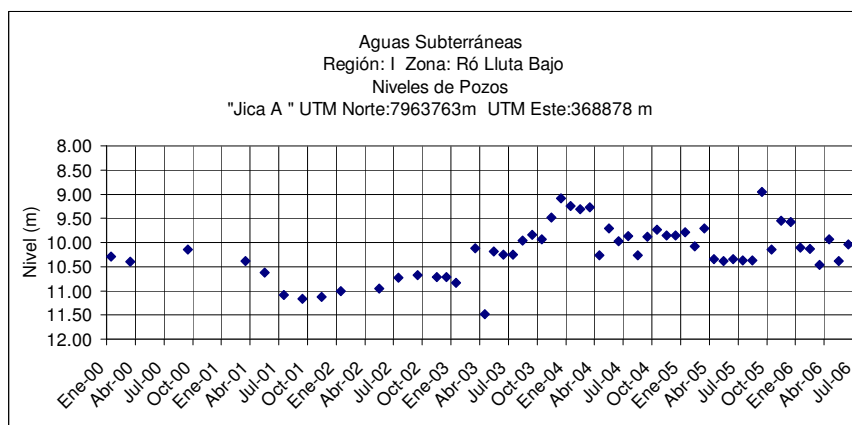
Informe de Aguas Subterráneas

Niveles de Pozos en metros

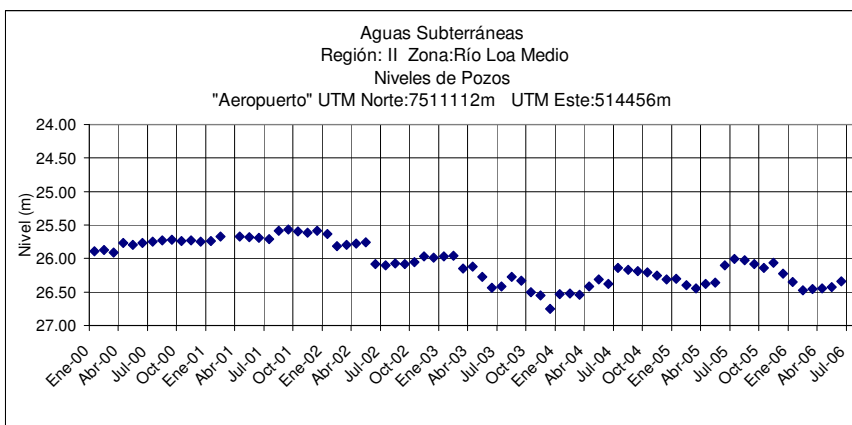
*Gráficos de últimos cinco años.



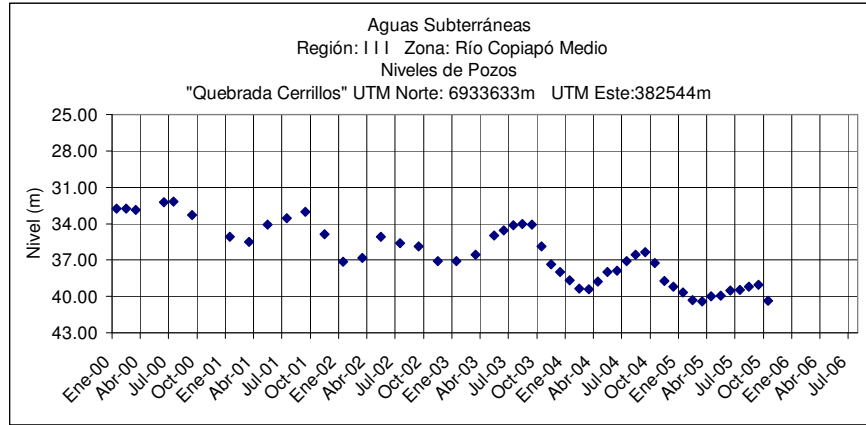
	Jul	Ago	Sep	Oct	Nov	Dic	Ene	Feb	Mar	Abr	May	Jun
2005-2006	19.75	21.67	19.60	20.82	18.78	18.86	18.84	26.30	21.59	22.01	22.16	22.10



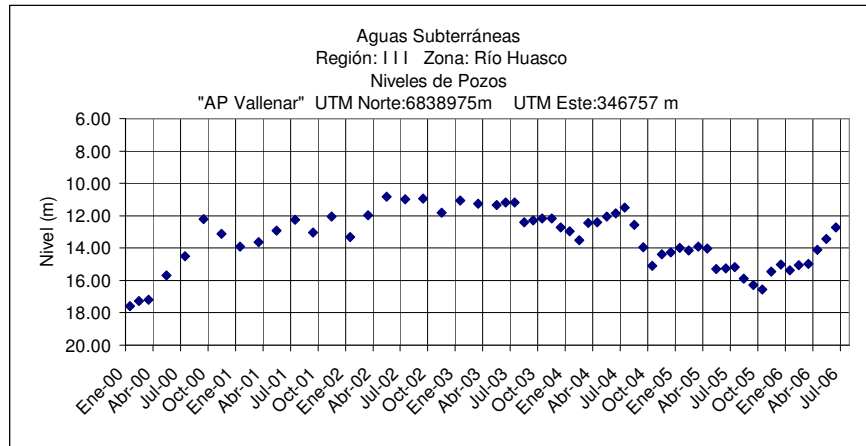
	Jul	Ago	Sep	Oct	Nov	Dic	Ene	Feb	Mar	Abr	May	Jun
2005-2006	10.37	10.37	8.95	10.15	9.55	9.58	10.11	10.13	10.46	9.94	10.39	10.04



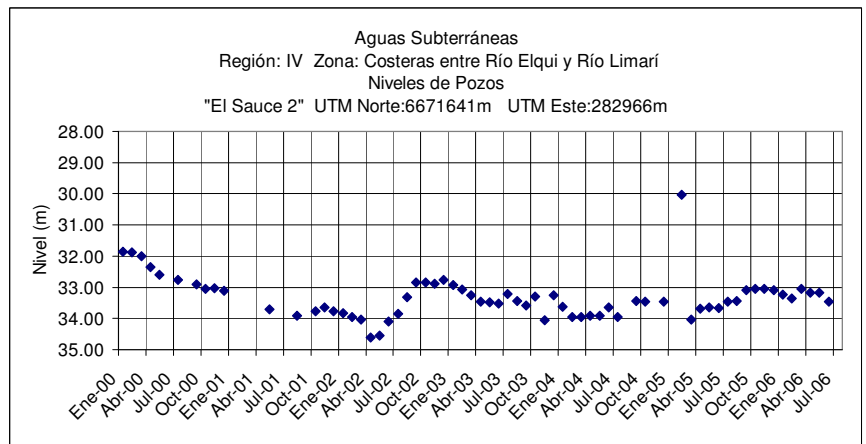
	Jul	Ago	Sep	Oct	Nov	Dic	Ene	Feb	Mar	Abr	May	Jun
2005-2006	26.01	26.03	26.08	26.14	26.06	26.23	26.35	26.47	26.46	26.45	26.43	26.34



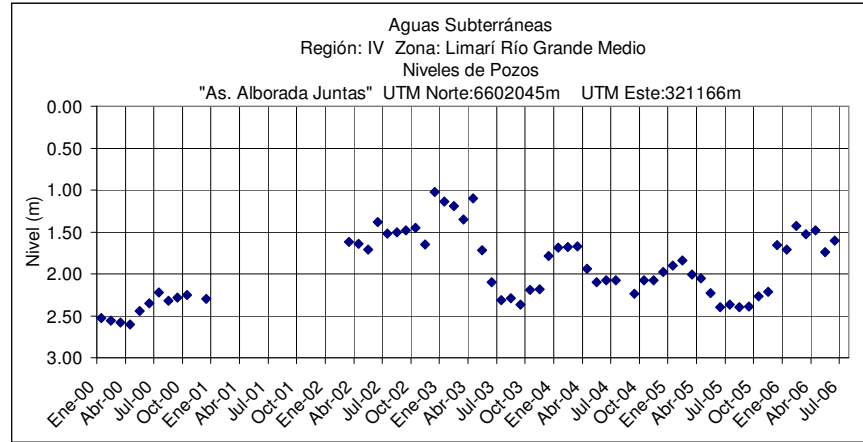
Year	Jul	Ago	Sep	Oct	Nov	Dic	Ene	Feb	Mar	Abr	May	Jun
2005-2006	39.46	39.19	39.06	40.36	Seco	Seco	Seco	Seco	Seco	Seco	Seco	Seco



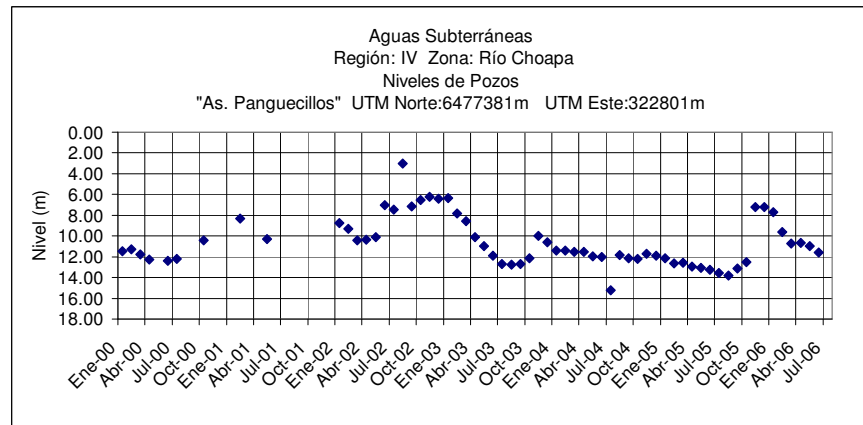
Year	Jul	Ago	Sep	Oct	Nov	Dic	Ene	Feb	Mar	Abr	May	Jun
2005-2006	15.17	15.87	16.29	16.56	15.45	15.03	15.37	15.07	14.97	14.09	13.42	12.73



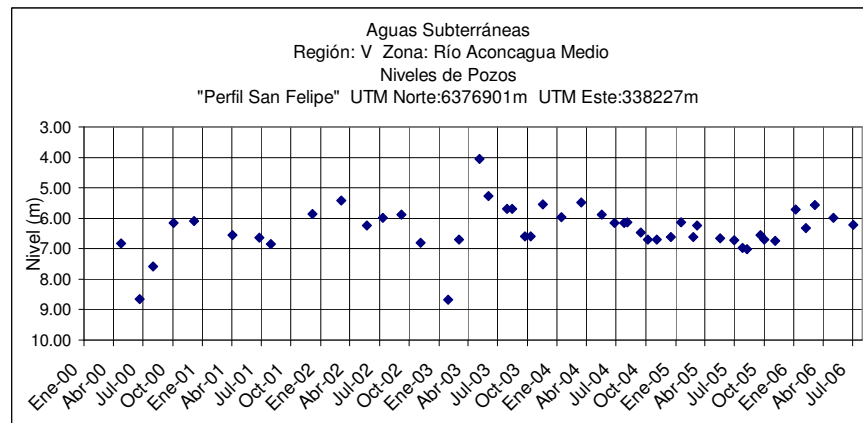
Year	Jul	Ago	Sep	Oct	Nov	Dic	Ene	Feb	Mar	Abr	May	Jun
2005-2006	33.46	33.43	33.10	33.06	33.05	33.10	33.23	33.36	33.04	33.18	33.17	33.47



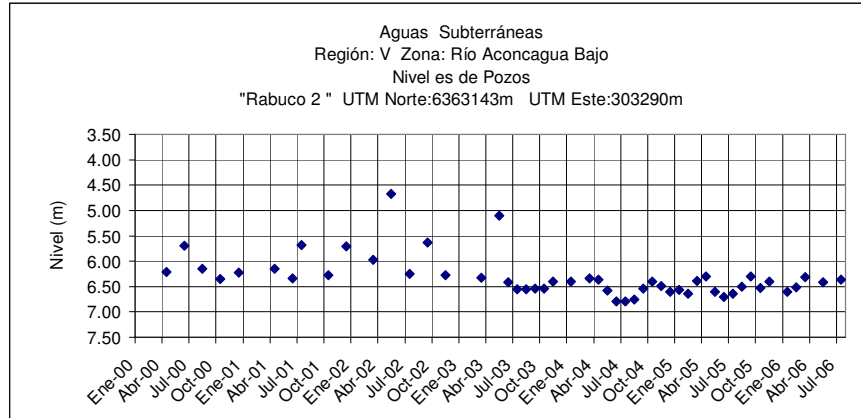
	Jul	Ago	Sep	Oct	Nov	Dic	Ene	Feb	Mar	Abr	May	Jun
2005-2006	2.37	2.40	2.39	2.27	2.21	1.66	1.71	1.43	1.53	1.48	1.74	1.60



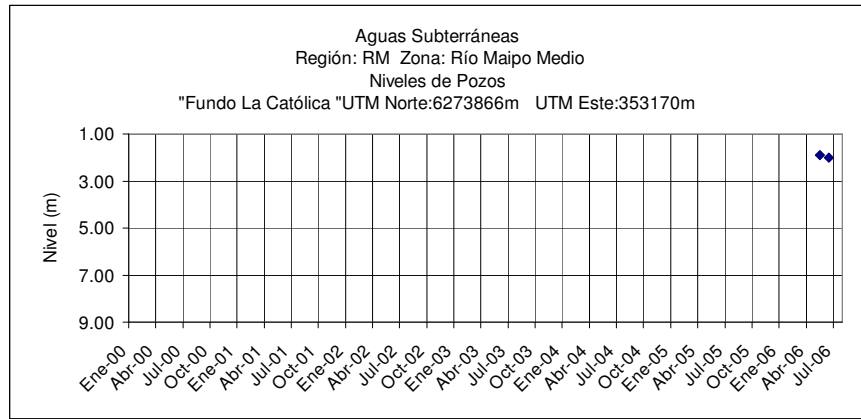
	Jul	Ago	Sep	Oct	Nov	Dic	Ene	Feb	Mar	Abr	May	Jun
2005-2006	13.55	13.78	13.16	12.49	7.24	7.21	7.68	9.61	10.72	10.68	10.96	11.58



	Jul	Ago	Sep	Oct	Nov	Dic	Ene	Feb	Mar	Abr	May	Jun
2005-2006	6.97	7.02	6.55	6.70	6.75	.	5.71	6.33	5.57	.	5.99	.

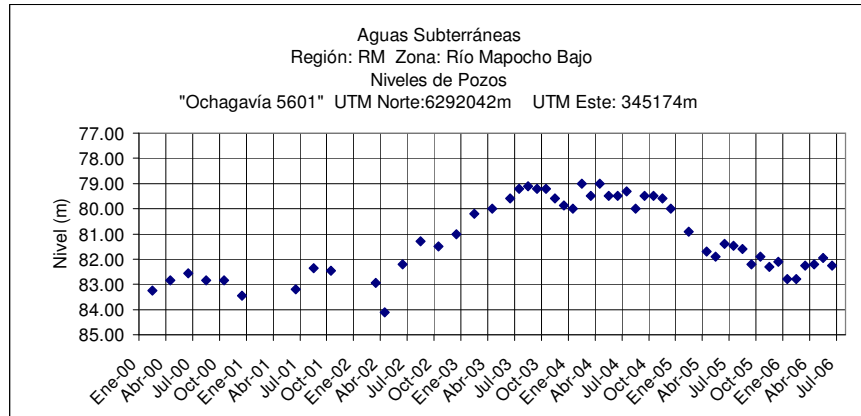


	Jul	Ago	Sep	Oct	Nov	Dic	Ene	Feb	Mar	Abr	May	Jun
2005-2006	6.64	6.50	6.30	6.53	6.40	.	6.61	6.52	6.32	.	6.42	.

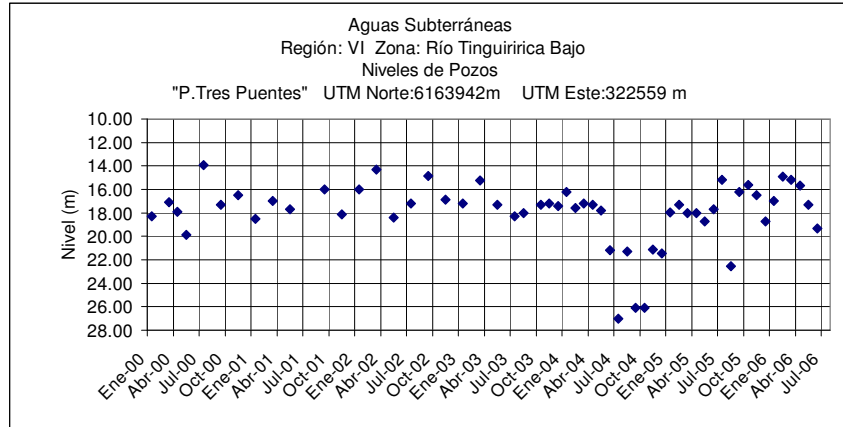


	Jul	Ago	Sep	Oct	Nov	Dic	Ene	Feb	Mar	Abr	May	Jun
2005-2006	1.90	2.00

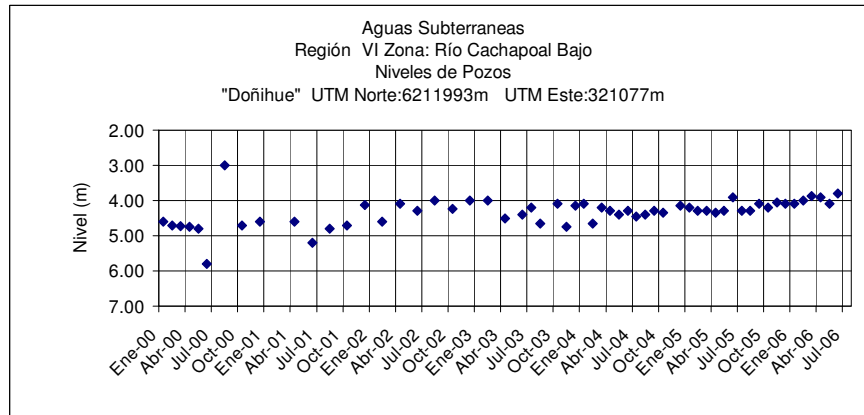
Nuevo pozo, reemplaza a pozo "El Cruceral" embancado.



	Jul	Ago	Sep	Oct	Nov	Dic	Ene	Feb	Mar	Abr	May	Jun
2005-2006	81.47	81.60	82.20	81.90	82.30	82.10	82.80	82.80	82.25	82.20	81.95	82.25



	Jul	Ago	Sep	Oct	Nov	Dic	Ene	Feb	Mar	Abr	May	Jun
2005-2006	15.20	22.55	16.20	15.60	16.50	18.75	17.00	14.90	15.20	15.70	17.30	19.30



	Jul	Ago	Sep	Oct	Nov	Dic	Ene	Feb	Mar	Abr	May	Jun
2005-2006	4.30	4.30	4.10	4.20	4.05	4.10	4.10	4.00	3.88	3.90	4.10	3.80