

Boletín N° : 340
Mes : Agosto
Año : 2006

DE : JAVIER NARBONA NARANJO
ING. JEFE DEPARTAMENTO DE HIDROLOGIA

*INFORMACION PLUVIOMETRICA, FLUVIOMETRICA,
ESTADO DE EMBALSES Y AGUAS SUBTERRANEAS*

Contenido :

- 1.- Informe pluviométrico
- 2.- Volúmenes de embalses
- 3.- Informe fluviométrico
- 4.- Informe aguas subterráneas

En Internet (www.dga.cl) se publica: .

- Los informes de este boletín
- Caudales en tiempo real

NOTA: Datos provisorios sujetos a modificaciones posteriores

INFORME PLUVIOMETRICO NACIONAL N°08

ESTACIONES	AGOSTO	TOTALES AL 31 DE AGOSTO			EXCESO O DÉFICIT (%)
		2006 (mm)	2005 (mm)	PROMEDIO (mm)	
CENTRAL CHAPIQUIÑA	0.0	155.5	75.0	135.6	15
EMBALSE CONCHI	1.0	34.2	21.5	17.3*	97
CALAMA	0.0	0.7	6.5	3.9	- 82
ANTOFAGASTA	11.5	11.5	0.5	3.1	>100
COPIAPÓ	0.0	0.0	18.7	12.4	-100
EMBALSE LAUTARO	0.0	1.0	31.5	28.2	- 96
VALLENAR	0.0	2.0	28.6	30.8	- 93
RIVADAVIA	1.5	42.5	75.0	85.7	- 50
VICUÑA	0.0	51.4	62.0	84.3	- 39
LA SERENA	1.1	64.4	57.5	72.1	- 11
OVALLE	0.0	62.4	46.3	93.3	- 33
EMBALSE PALOMA	0.0	75.7	62.1	122.3	- 38
COGOTÍ 18	0.0	96.0	98.0	167.1	- 43
HUINTIL	3.5	135.0	132.6	197.7	- 32
COIRÓN	2.5	182.0	220.3	295.1	- 38
VILCUYA	34.0	332.2	517.0	283.1	17
SAN FELIPE	20.1	219.7	224.4	178.6	23
LAGO PEÑUELAS	53.0	687.5	607.1	544.2	26
EMBALSE EL YESO	57.5	559.3	1205.6	449.5	24
CERRO CALÁN	66.5	322.8	556.1	328.6	- 2
SANTIAGO (MOP)	62.9	308.2	453.4	263.1	17
RANCAGUA	62.2	398.9	496.8	340.4	17
SAN FERNANDO	119.5	713.5	969.8	591.7	21
CONVENTO VIEJO	139.5	649.5	1002.2	578.4	12
CURICO	102.6	590.0	880.5	586.9	1
TALCA	134.6	656.6	762.0	535.1	23
COLORADO	322.0	1404.5	1620.9	1125.3	25
LINARES	146.2	794.4	967.9	732.4	8
PARRAL	146.0	966.6	945.7	778.4	24
EMBALSE DIGUA	252.8	1415.9	1574.5	1168.0	21
CHILLÁN	165.5	1067.3	1141.1	790.9	35
CONCEPCIÓN	239.9	1250.6	1226.0	939.2	33
LOS ÁNGELES	215.9	1170.7	1061.1	865.7	35
CAÑETE	219.6	1335.9	1289.6	990.0	35
ANGOL	234.9	1283.0	1273.3	873.7	47
TEMUCO	177.9	1200.5	1239.9	896.9	34
VALDIVIA	253.9	1754.6	1945.5	1670.2	5
OSORNO	162.9	1114.4	1178.4	1186.2	- 6
PUERTO MONTT	196.7	2011.4	1758.6	1410.1	43
COYHAIQUE	52.6	852.2	865.8	924.5*	- 8
PUNTA ARENAS	42.9	467.3	367.3	310.5	50

Promedios acumulados para el período 1961-1990 (D.G.A)

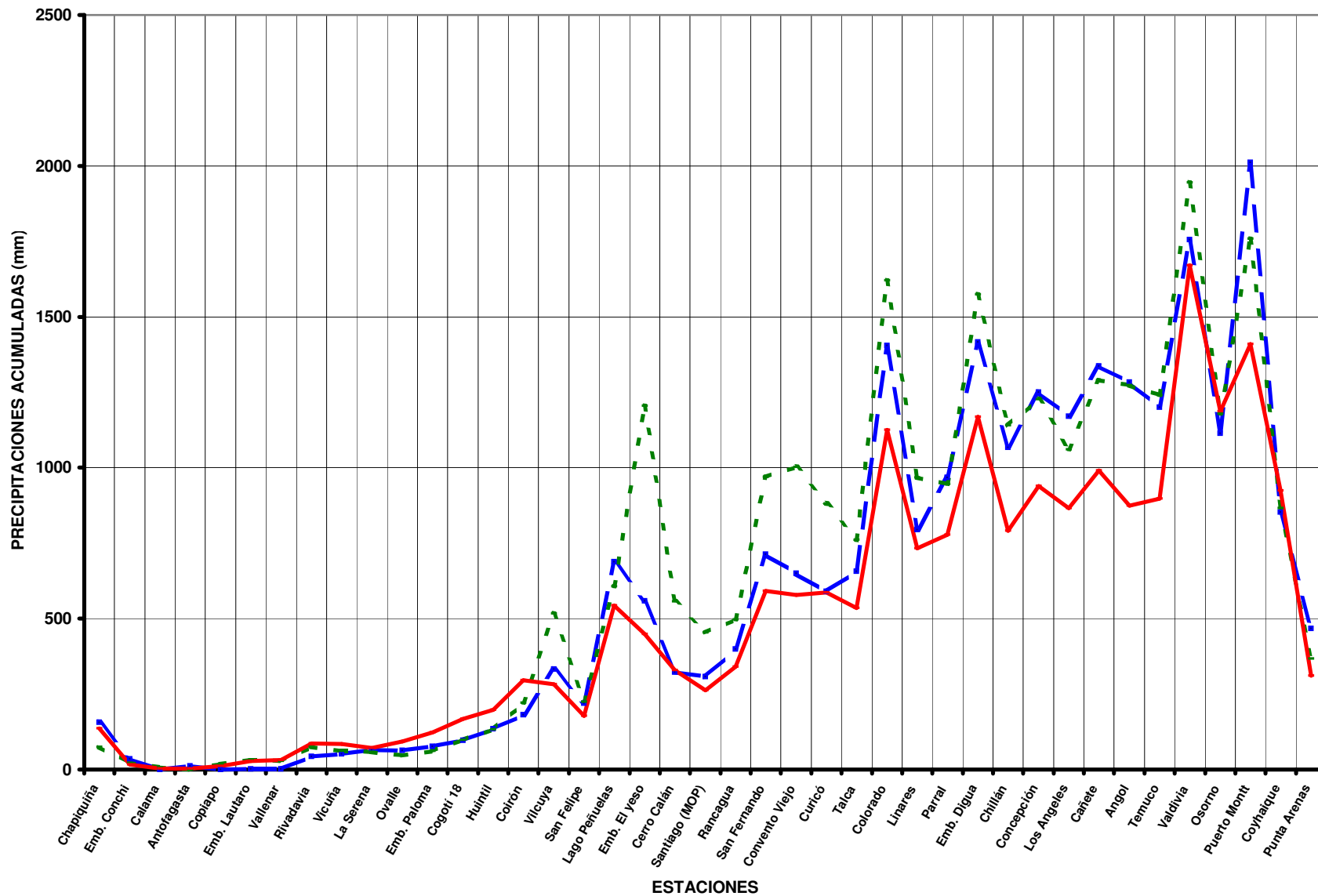
* : Promedios calculados para períodos inferiores a 30 años
Valores expresados en milímetros (1 mm = 1 lt x m2)

TOTALES DE LLUVIA HASTA EL
31 de Agosto de 2006

Normal

Año 2006

Año 2005



ESTADO DE EMBALSES

Ultimo día del mes
(Volúmenes en mill-m³)

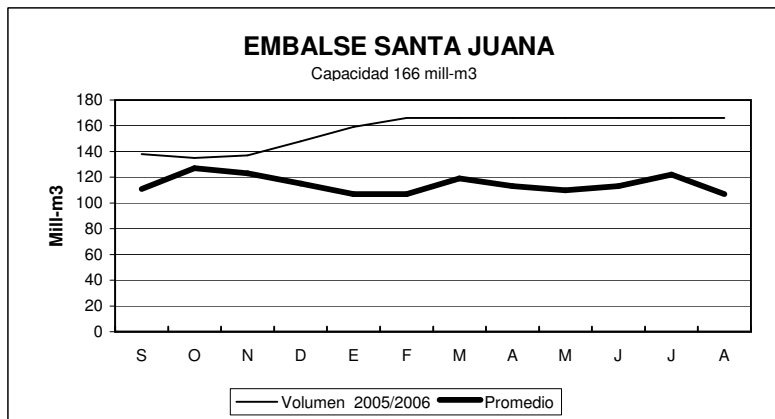
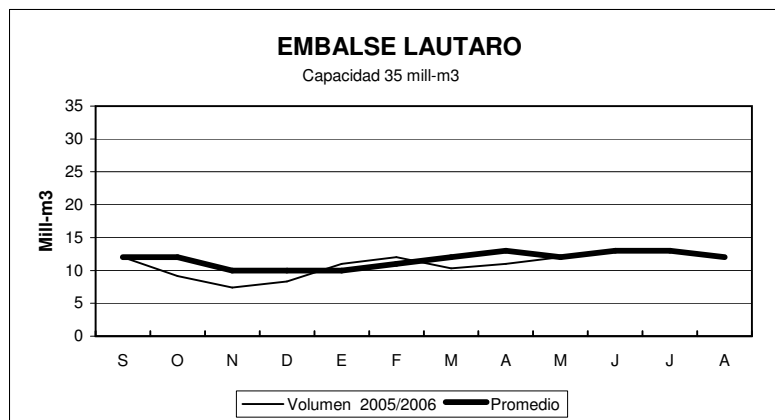
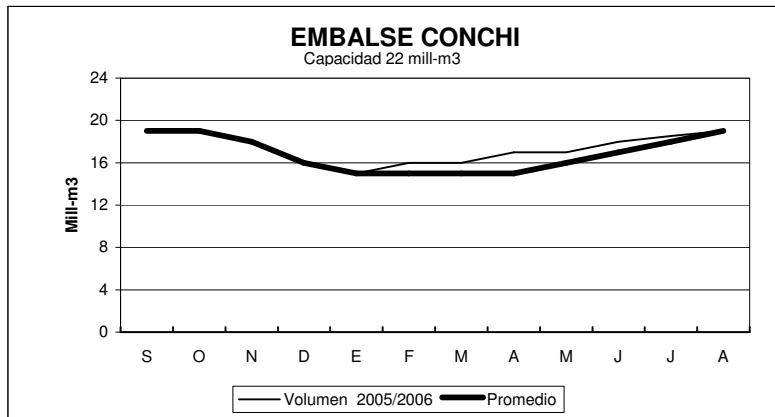
EMBALSE	REGION	CUENCA	CAPACIDAD	PROMEDIO	Agosto	
				HISTORICO MENSUAL	2006	2005
Conchi	II	Loa	22	19	19	18
Lautaro	III	Copiapó	35	13	12	12
Santa Juana	III	Huasco	166	107	166	137
La Laguna	IV	Elqui	40	24	31	31
Puclaro	IV	Elqui	200	71	197	140
Recoleta	IV	Limarí	100	67	95	77
La Paloma	IV	Limarí	748	415	591	456
Cogotí	IV	Limarí	150	85	85	63
Culimo	IV	Quilimarí	10	5.4	1.3	1.3
Corrales	IV	Illapel	50	31	51	37
Peñuelas	V	Peñuelas	95	32	34	35
El Yeso	RM	Maipo	256	173	215	203
Rungue	RM	Maipo	2.2	1.5	2.0	2.0
Rapel	VI	Rapel	695	518	622	645
Colbún	VII	Maule	1544	1180	1491	1506
Lag. Maule	VII	Maule	1420	939	1234	829
Bullileo	VII	Maule	60	53	60	60
Digua	VII	Maule	220	200	219	219
Tutuvén	VII	Maule	15	10.8	12	15
Coihueco	VIII	Itata	29	22	27	28.3
Lago Laja (&)	VIII	Bio-Bio	5582	3367	3083	2368

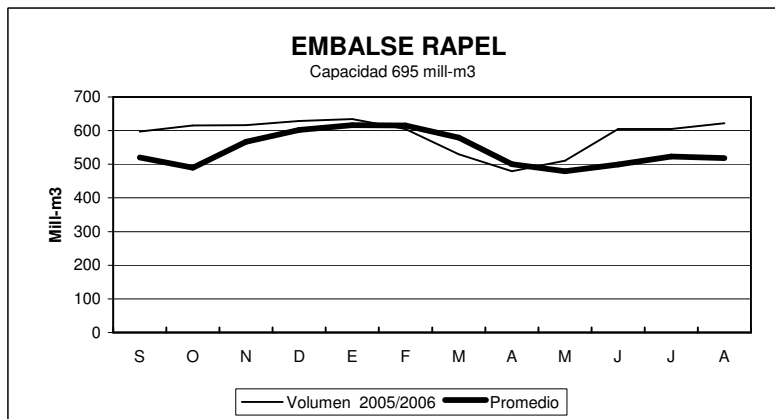
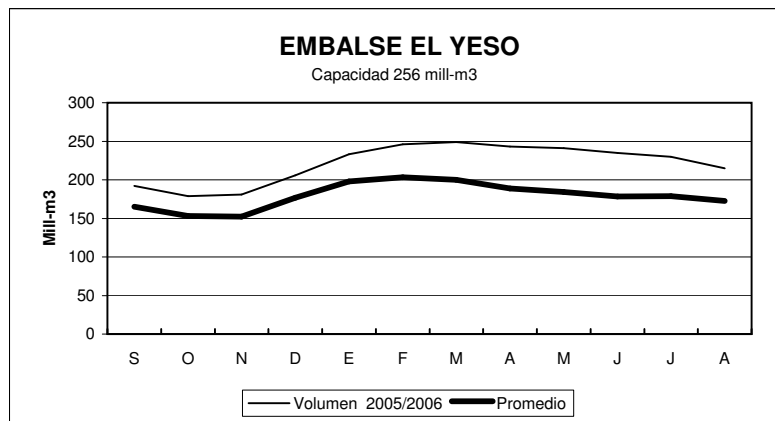
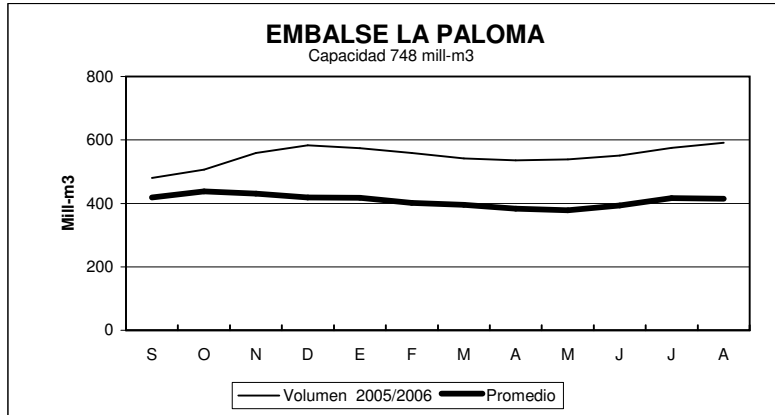
RESUMEN ANUAL

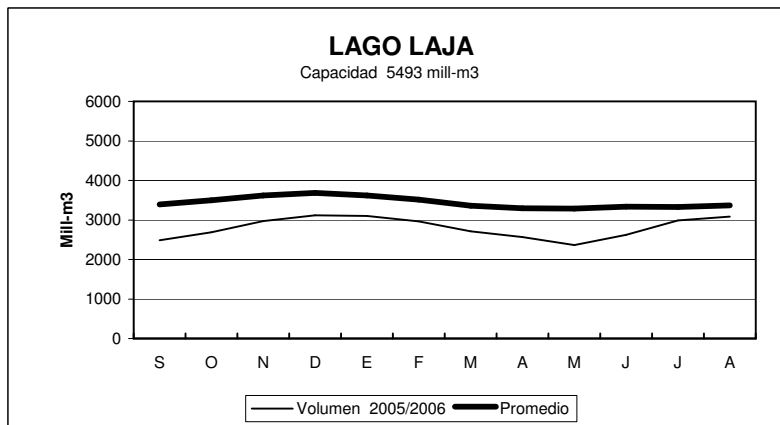
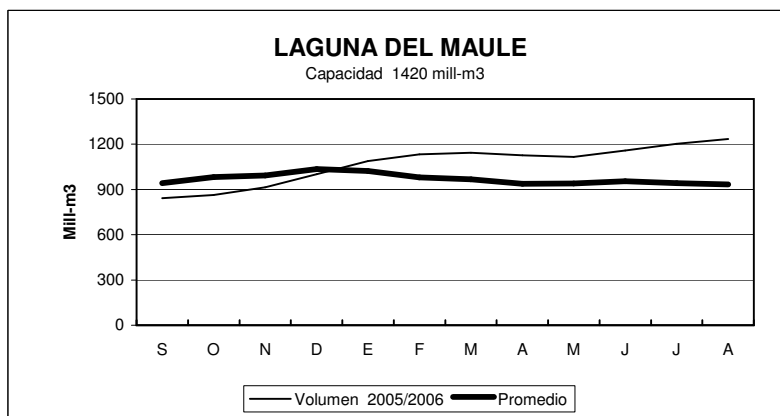
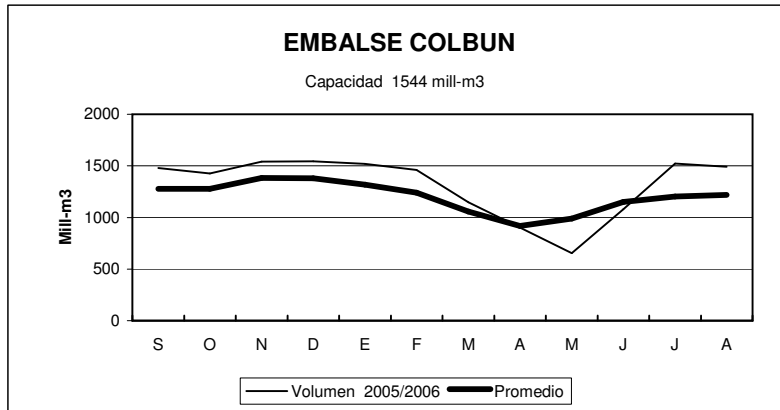
EMBALSE	2005-2006											
	S	O	N	D	E	F	M	A	M	J	J	A
Conchi	19	19	18	16	15	16	16	17	17	18	19	19
Lautaro	12	9	7	8	11	12	10	11	12	13	13	12
Santa Juana	138	135	137	148	159	166	166	166	166	166	166	166
La Laguna	32	36	37	38	36	31	28	32	34	33	32	31
Puclaro	141	142	155	189	200	200	200	200	200	196	197	197
Recoleta	80	81	86	91	91	100	92	94	95	97	97	95
La Paloma	480	506	559	583	574	559	542	536	539	551	575	591
Cogotí	73	80	100	104	98	92	86	82	79	79	83	85
Culimo	3.1	3.7	2.9	2.4	1.9	1.2	0.4	0.1	0.4	0.4	0.7	1.3
Corrales	42	43	44	46	49	49	49	48	48	48	50	51
Peñuelas	35	34	32	29	27	24	22	21	20	21	30	34
El Yeso	192	179	181	206	233	246	249	243	241	235	230	215
Rungue	2.1	2.0	1.9	2.2	1.0	0.6	0.3	0.2	0.2	0.3	2.0	2.0
Rapel	597	615	616	629	634	605	530	479	511	605	605	622
Colbún	1480	1425	1542	1544	1519	1462	1148	902	654	1078	1522	1491
Lag. Maule	843	863	914	1001	1088	1134	1144	1127	1115	1159	1202	1234
Bullileo	60	60	60	60	49	24	0	0	7	30	60	60
Digua	220	220	199	220	93	34	11	8.6	2.7	93	179	219
Tutuvén	13	12	12	15	6.1	4	2.0	3.4	3.0	10	11	12
Coihueco	29	29	29	28	22	14	6.6	3.9	6	10	16	27
Lago Laja (&)	2482	2690	2974	3120	3104	2960	2709	2566	2365	2620	2989	3083

(&) : Volumen sobre cota 1300 msnm

ESTADO DE EMBALSES



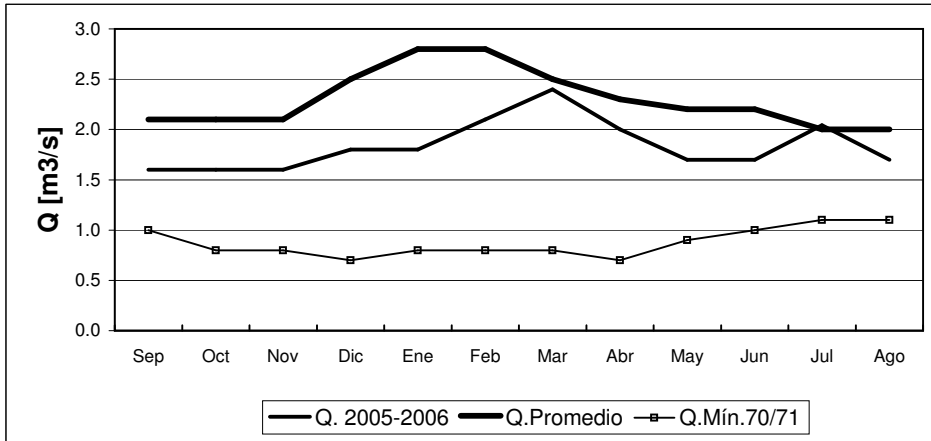




INFORME FLUVIOMETRICO
Caudales medios mensuales en m3/seg

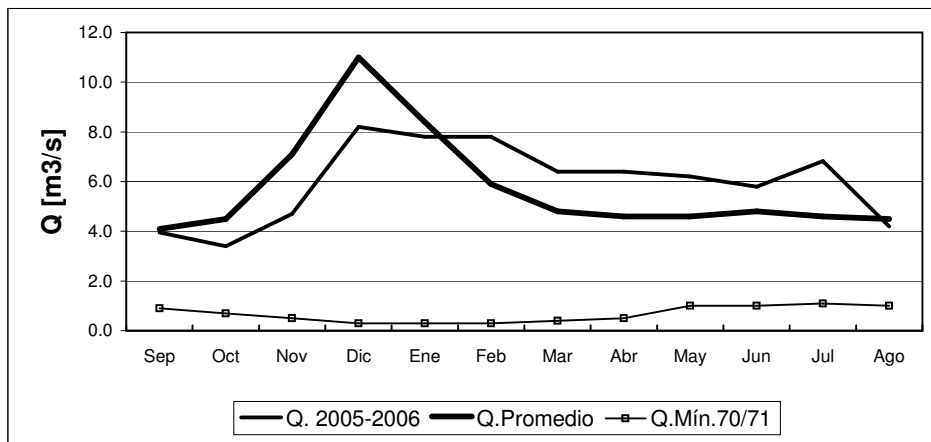
Ago-06

RIO COPIAPO EN LA PUERTA



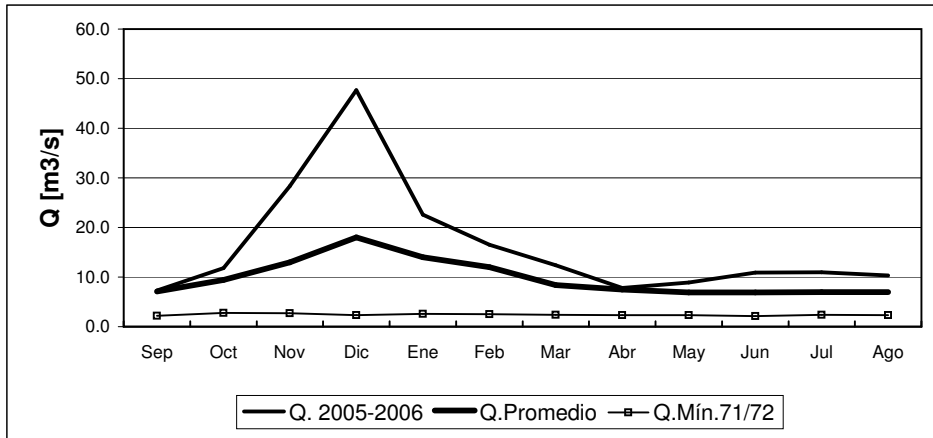
	Sep	Oct	Nov	Dic	Ene	Feb	Mar	Abr	May	Jun	Jul	Ago
Q. 2005-2006	1.6	1.6	1.6	1.8	1.8	2.1	2.4	2.0	1.7	1.7	2.0	1.7
Q. Promedio	2.1	2.1	2.1	2.5	2.8	2.8	2.5	2.3	2.2	2.2	2.0	2.0
Q. Mín.70/71	1.0	0.8	0.8	0.7	0.8	0.8	0.8	0.7	0.9	1.0	1.1	1.1

RIO HUASCO EN ALGODONES



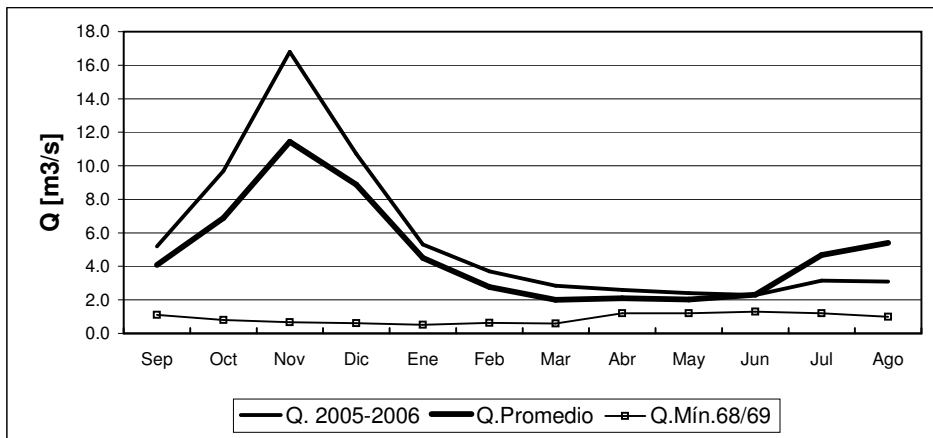
	Sep	Oct	Nov	Dic	Ene	Feb	Mar	Abr	May	Jun	Jul	Ago
Q. 2005-2006	4.0	3.4	4.7	8.2	7.8	7.8	6.4	6.4	6.2	5.8	6.8	4.2
Q. Promedio	4.1	4.5	7.1	11.0	8.4	5.9	4.8	4.6	4.6	4.8	4.6	4.5
Q. Mín.70/71	0.9	0.7	0.5	0.3	0.3	0.3	0.4	0.5	1.0	1.0	1.1	1.0

RIO ELQUI EN ALGARROBAL



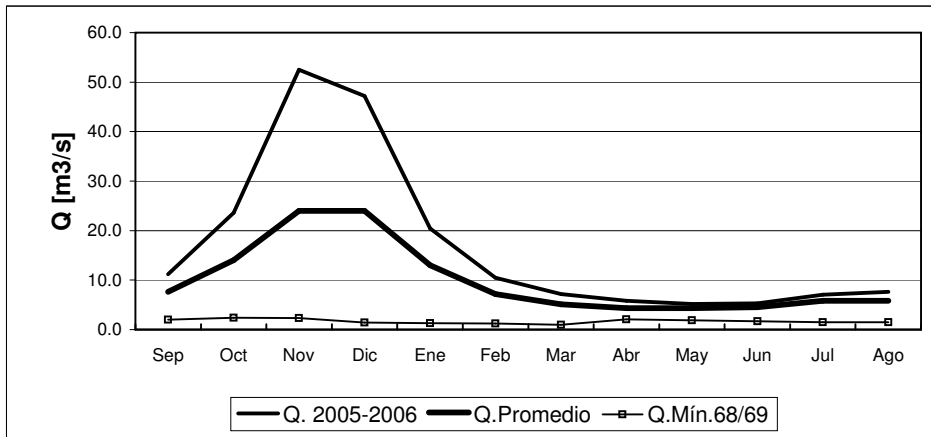
	Sep	Oct	Nov	Dic	Ene	Feb	Mar	Abr	May	Jun	Jul	Ago
Q. 2005-2006	7.3	11.8	28.3	47.7	22.6	16.5	12.4	7.8	8.9	10.9	11.0	10.3
Q.Promedio	7.1	9.4	13.0	18.0	14.0	12.0	8.4	7.5	6.9	6.9	7.0	7.0
Q.Mín.71/72	2.2	2.8	2.7	2.3	2.6	2.5	2.4	2.3	2.3	2.1	2.4	2.3

RIO GRANDE EN LAS RAMADAS



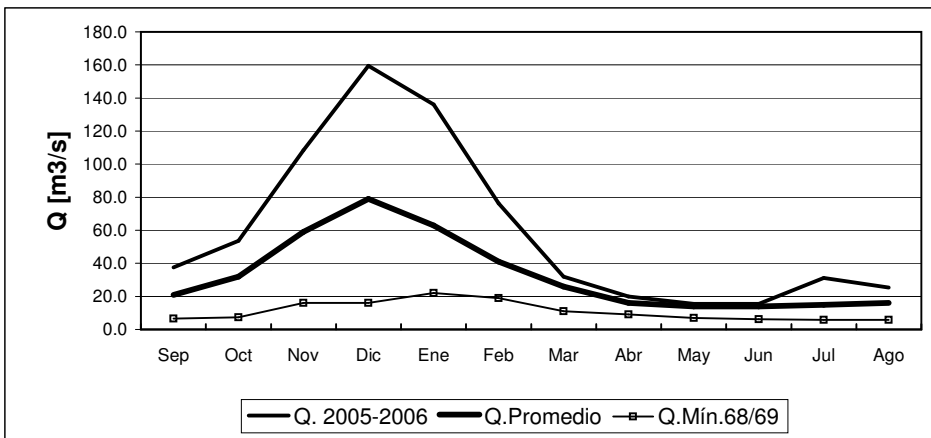
	Sep	Oct	Nov	Dic	Ene	Feb	Mar	Abr	May	Jun	Jul	Ago
Q. 2005-2006	5.2	9.7	16.8	10.7	5.3	3.7	2.9	2.6	2.4	2.3	3.1	3.1
Q.Promedio	4.1	6.9	11.4	8.9	4.5	2.8	2.0	2.1	2.0	2.3	4.7	5.4
Q.Mín.68/69	1.1	0.8	0.7	0.6	0.5	0.6	0.6	1.2	1.2	1.3	1.2	1.0

RIO CHOAPA EN CUNCUMEN



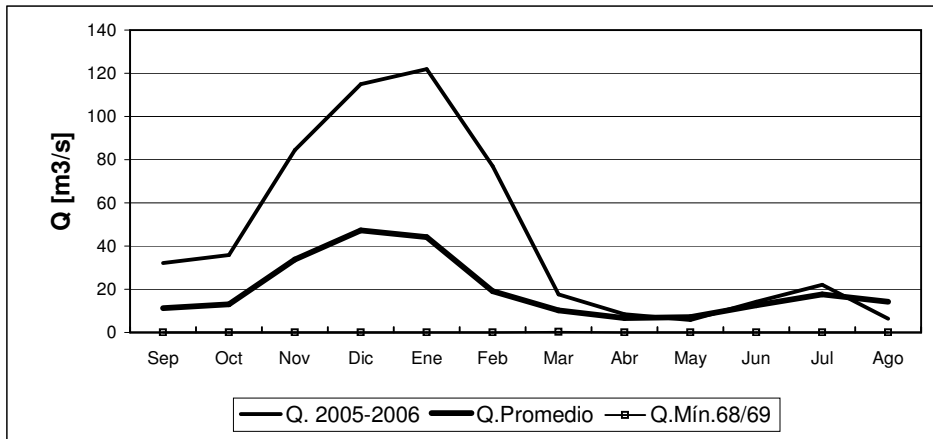
	Sep	Oct	Nov	Dic	Ene	Feb	Mar	Abr	May	Jun	Jul	Ago
Q. 2005-2006	11.2	23.6	52.5	47.2	20.4	10.5	7.2	5.8	5.2	5.3	7.1	7.6
Q.Promedio	7.6	14.0	24.0	24.0	13.0	7.2	5.1	4.3	4.3	4.5	5.8	5.8
Q.Mín.68/69	2.0	2.4	2.3	1.4	1.3	1.2	1.0	2.1	1.9	1.7	1.5	1.5

RIO ACONCAGUA EN CHACABUQUITO



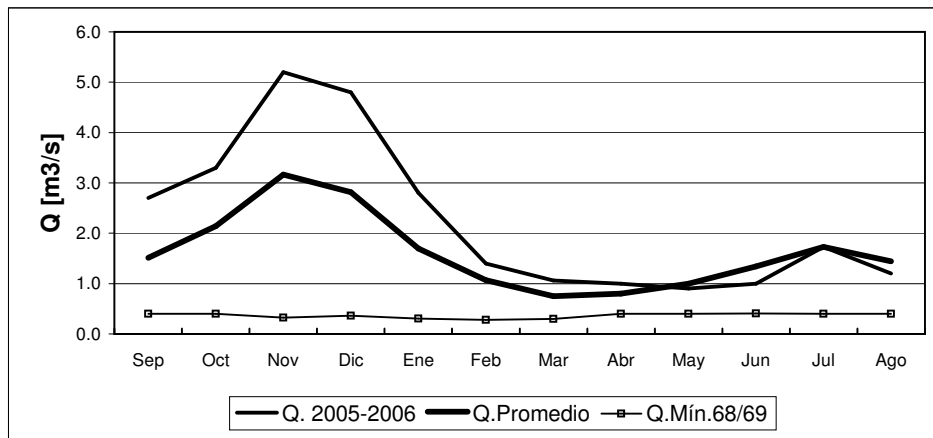
	Sep	Oct	Nov	Dic	Ene	Feb	Mar	Abr	May	Jun	Jul	Ago
Q. 2005-2006	37.5	53.7	108.4	159.5	136.0	76.3	31.9	20.0	15.5	15.4	31.2	25.4
Q.Promedio	21.0	32.0	59.0	79.0	63.0	41.0	26.0	16.0	14.0	14.0	15.0	16.0
Q.Mín.68/69	6.6	7.4	16.0	16.0	22.0	19.0	11.0	9.1	6.9	6.2	5.9	5.9

RIO ACONCAGUA EN SAN FELIPE



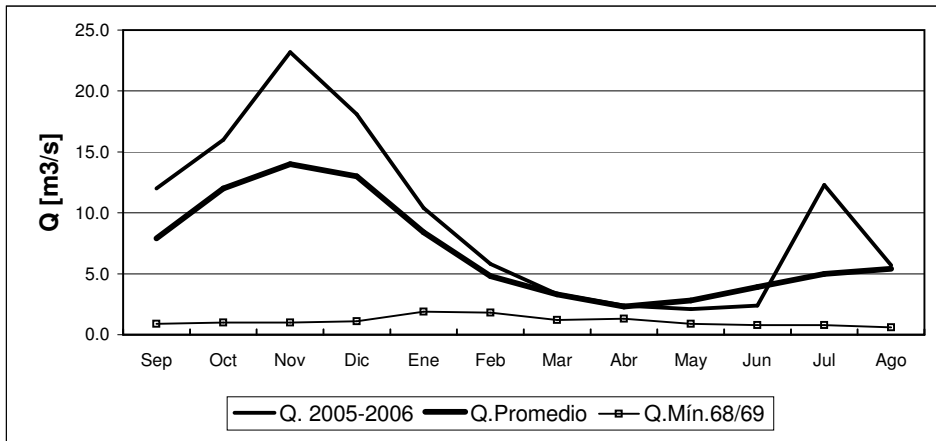
	Sep	Oct	Nov	Dic	Ene	Feb	Mar	Abr	May	Jun	Jul	Ago
Q. 2005-2006	32.2	35.8	84.4	115.0	122	77	17.6	8.5	5.8	14.2	22.1	6.3
Q.Promedio	11.3	13.0	33.8	47.3	44.1	19.1	10.2	6.7	7.1	12.7	17.6	14.2
Q.Mín.68/69	0.0	0.0	0.0	0.0	0.0	0.0	0.3	0.0	0.0	0.0	0.0	0.0

ESTERO ARRAYAN EN LA MONTOSA



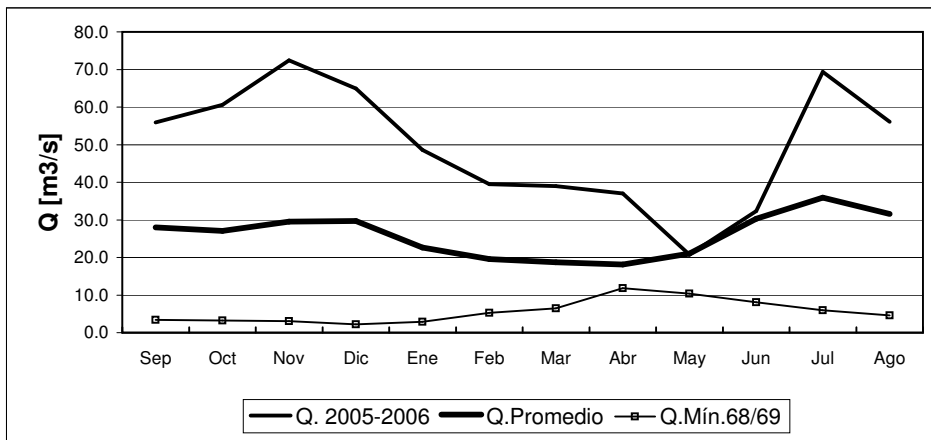
	Sep	Oct	Nov	Dic	Ene	Feb	Mar	Abr	May	Jun	Jul	Ago
Q. 2005-2006	2.7	3.3	5.2	4.8	2.8	1.4	1.1	1.0	0.9	1.0	1.7	1.2
Q.Promedio	1.5	2.1	3.2	2.8	1.7	1.1	0.8	0.8	1.0	1.3	1.7	1.4
Q.Mín.68/69	0.4	0.4	0.3	0.4	0.3	0.3	0.3	0.4	0.4	0.4	0.4	0.4

RIO MAPOCHO EN LOS ALMENDROS



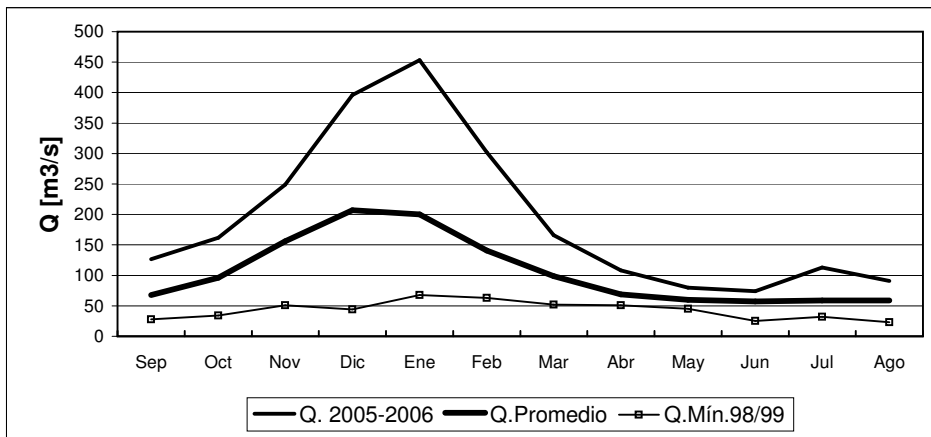
	Sep	Oct	Nov	Dic	Ene	Feb	Mar	Abr	May	Jun	Jul	Ago
Q. 2005-2006	12.0	16.0	23.2	18.1	10.4	5.8	3.3	2.4	2.1	2.4	12.3	5.7
Q.Promedio	7.9	12.0	14.0	13.0	8.4	4.8	3.3	2.3	2.8	3.9	5.0	5.4
Q.Mín.68/69	0.9	1.0	1.0	1.1	1.9	1.8	1.2	1.3	0.9	0.8	0.8	0.6

RIO MAPOCHO EN RINCONADA DE MAIPU



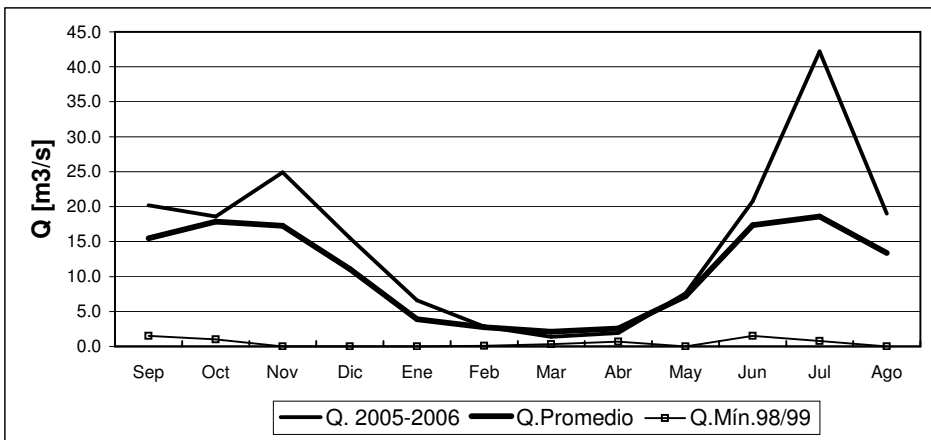
	Sep	Oct	Nov	Dic	Ene	Feb	Mar	Abr	May	Jun	Jul	Ago
Q. 2005-2006	55.9	60.6	72.4	64.9	48.6	39.5	39.0	37.0	20.8	32.3	69.4	56.1
Q.Promedio	28.0	27.1	29.5	29.7	22.6	19.6	18.7	18.1	21.0	30.3	35.9	31.6
Q.Mín.68/69	3.4	3.2	3.1	2.2	2.9	5.3	6.5	11.8	10.4	8.1	6.0	4.6

RIO MAIPO EN EL MANZANO



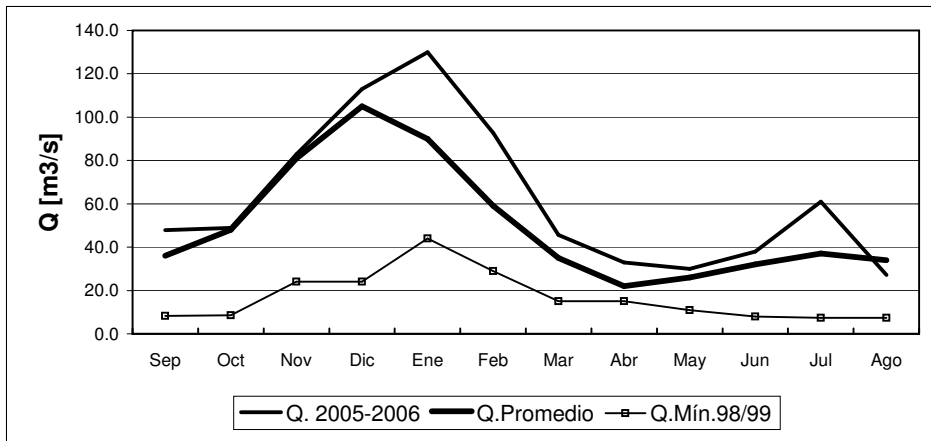
	Sep	Oct	Nov	Dic	Ene	Feb	Mar	Abr	May	Jun	Jul	Ago
Q. 2005-2006	126	162	249	396	453	302	166	108	80	74	113	91
Q. Promedio	68	96	156	207	200	141	99	69	60	57	59	59
Q. Mín.98/99	28	34	51	44	68	63	52	51	45	25	32	23

RIO CLARO EN EL VALLE 2



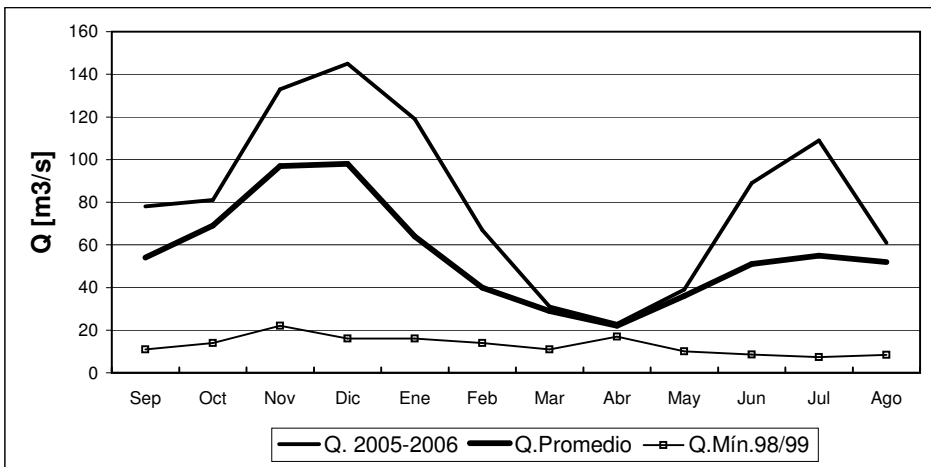
	Sep	Oct	Nov	Dic	Ene	Feb	Mar	Abr	May	Jun	Jul	Ago
Q. 2005-2006	20.2	18.6	24.9	15.5	6.6	2.8	1.4	1.9	7.6	20.8	42.2	19.0
Q. Promedio	15.5	17.9	17.2	11.1	3.9	2.7	2.1	2.6	7.2	17.3	18.6	13.4
Q. Mín.98/99	1.5	1.0	0.0	0.0	0.0	0.1	0.3	0.7	0.0	1.5	0.8	0.0

RIO TINGUIRIRICA BAJO BRIONES



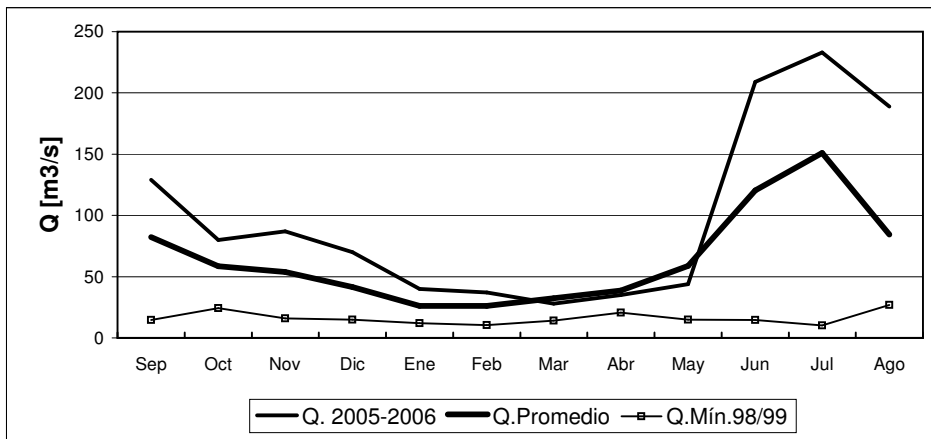
	Sep	Oct	Nov	Dic	Ene	Feb	Mar	Abr	May	Jun	Jul	Ago
Q. 2005-2006	47.9	48.9	82.8	113.0	130.0	92.7	45.7	32.9	30.0	38.0	61.0	27.1
Q. Promedio	36.0	48.0	81.0	105.0	90.0	59.0	35.0	22.0	26.0	32.0	37.0	34.0
Q. Mín. 98/99	8.2	8.5	24.0	24.0	44.0	29.0	15.0	15.0	11.0	8.0	7.4	7.4

RIO TENO DESPUES DE JUNTA



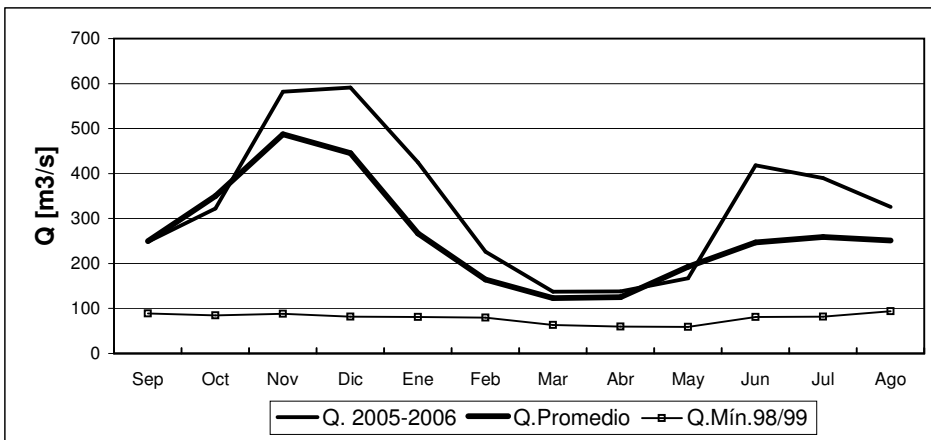
	Sep	Oct	Nov	Dic	Ene	Feb	Mar	Abr	May	Jun	Jul	Ago
Q. 2005-2006	78	81	133	145	119	67	31	23	39	89	109	61
Q. Promedio	54	69	97	98	64	40	29	22	36	51	55	52
Q. Mín. 98/99	11	14	22	16	16	14	11	17	10	8.6	7.4	8.4

RIO CLARO EN RAUQUEN



	Sep	Oct	Nov	Dic	Ene	Feb	Mar	Abr	May	Jun	Jul	Ago
Q. 2005-2006	129	80	87	70	40	37	28	35	44	209	233	189
Q. Promedio	82	58	54	41	26	26	33	39	59	121	151	84
Q. Mín.98/99	15	24	16	15	12	10	14	21	15	15	10	27

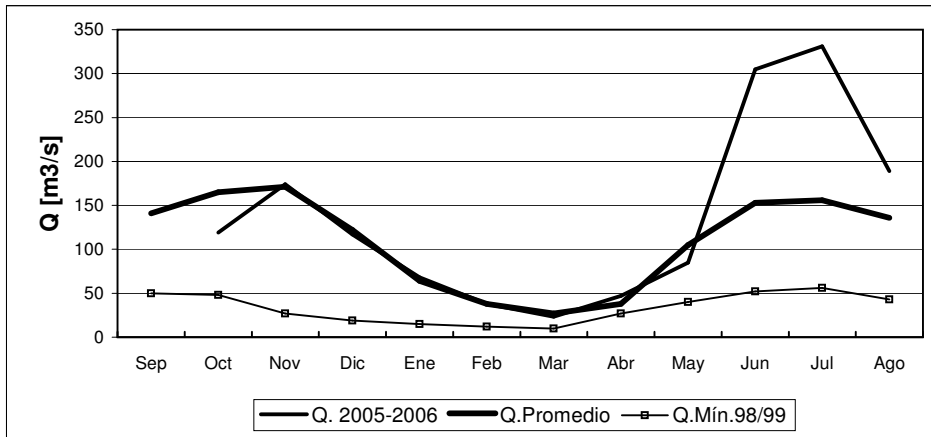
RIO MAULE EN ARMERILLO



	Sep	Oct	Nov	Dic	Ene	Feb	Mar	Abr	May	Jun	Jul	Ago
Q. 2005-2006	248	322	582	591	425	226	137	138	167	418	390	326
Q. Promedio	250	350	487	445	267	164	123	125	193	247	259	251
Q. Mín.98/99	89	85	88	82	81	80	63	60	59	81	82	94

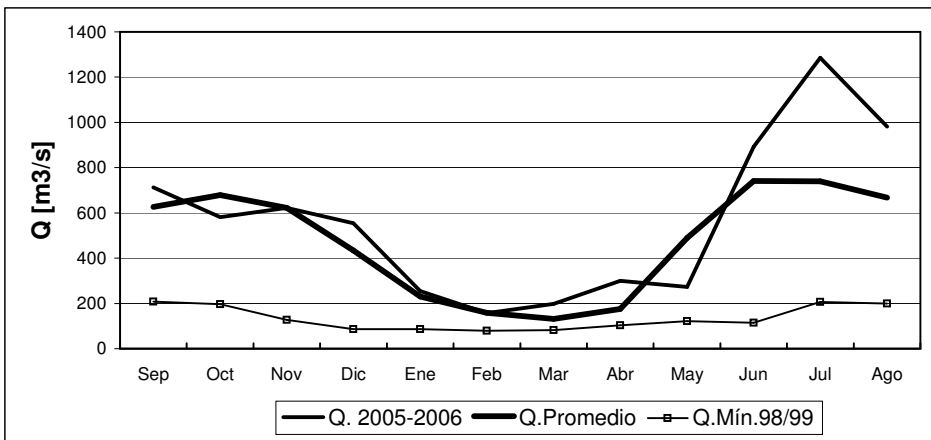
nota: caudal julio 2006 corresponde a últimos 15 días

RIO ÑUBLE EN SAN FABIAN



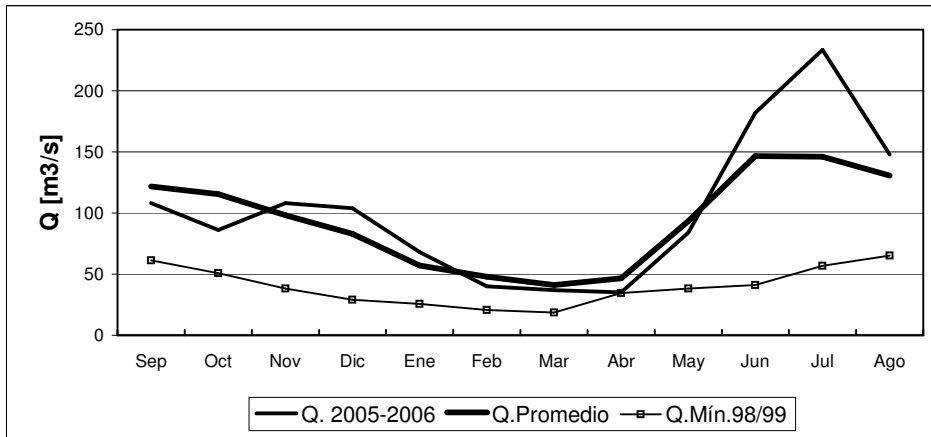
	Sep	Oct	Nov	Dic	Ene	Feb	Mar	Abr	May	Jun	Jul	Ago
Q. 2005-2006	119	174	117	68	38	23	47	85	305	331	189	
Q. Promedio	141	165	171	122	64	38	27	38	105	153	156	136
Q. Mín.98/99	50	48	27	19	15	12	10	27	40	52	56	43

RIO BIO-BIO EN RUCALHUE



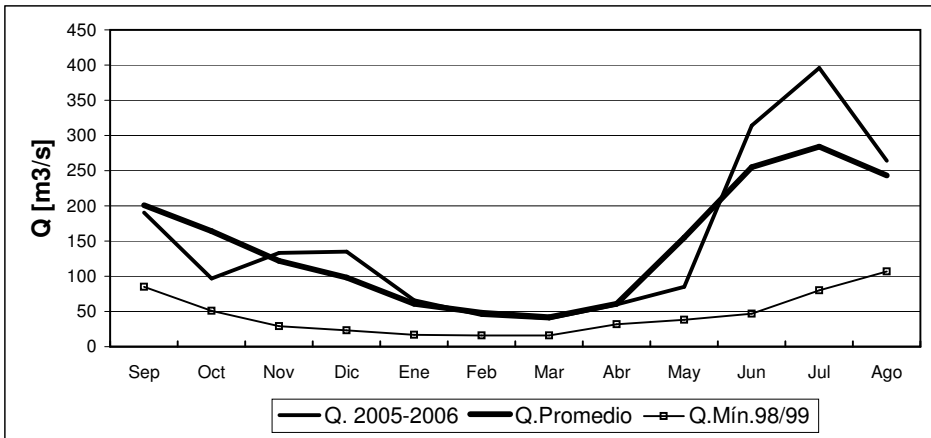
	Sep	Oct	Nov	Dic	Ene	Feb	Mar	Abr	May	Jun	Jul	Ago
Q. 2005-2006	581	622	554	255	157	198	300	273	892	1285	982	
Q. Promedio	627	679	622	434	231	158	132	176	489	741	740	668
Q. Mín.98/99	208	197	127	86	86	79	82	103	122	114	207	200

RIO CAUTIN EN RARI-RUCA



	Sep	Oct	Nov	Dic	Ene	Feb	Mar	Abr	May	Jun	Jul	Ago
Q. 2005-2006	108	86	108	104	68	40	37	35	84	182	233	148
Q. Promedio	122	116	98	83	57	48	41	47	93	147	146	131
Q. Mín.98/99	61	51	38	29	26	21	19	35	38	41	57	65

RIO CAUTIN EN CAJON

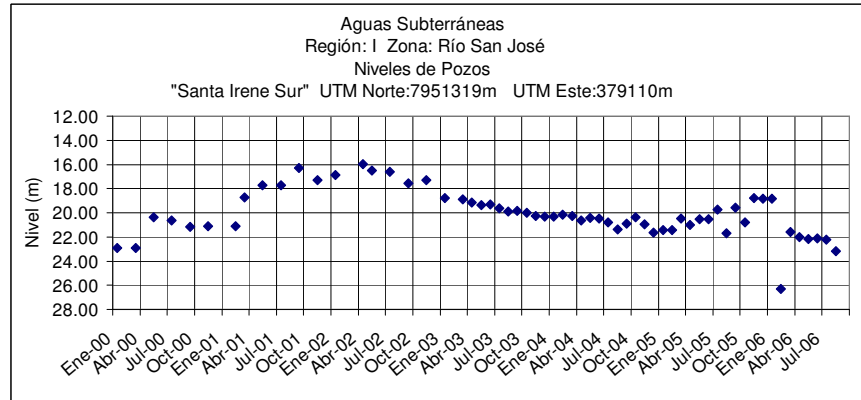


	Sep	Oct	Nov	Dic	Ene	Feb	Mar	Abr	May	Jun	Jul	Ago
Q. 2005-2006	190	97	133	135	66	45	40	60	85	314	396	264
Q. Promedio	201	164	122	98	61	48	42	61	155	255	284	243
Q. Mín.98/99	85	51	29	23	17	16	16	32	38	47	80	107

Informe de Aguas Subterráneas

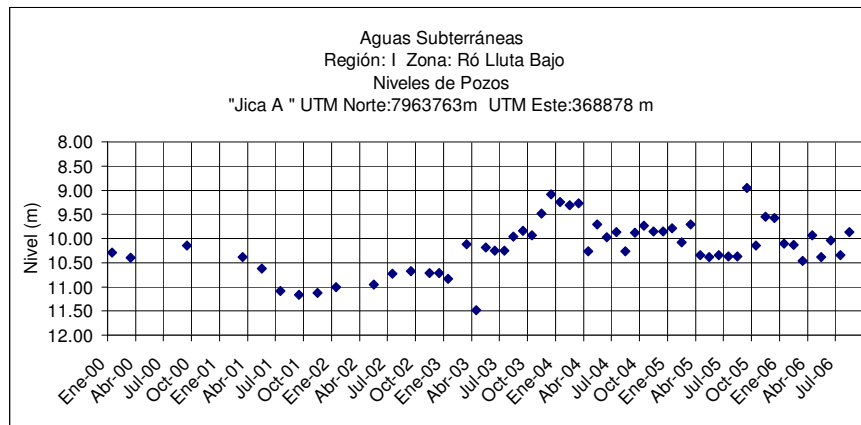
Niveles de Pozos en metros

*Gráficos de últimos cinco años.

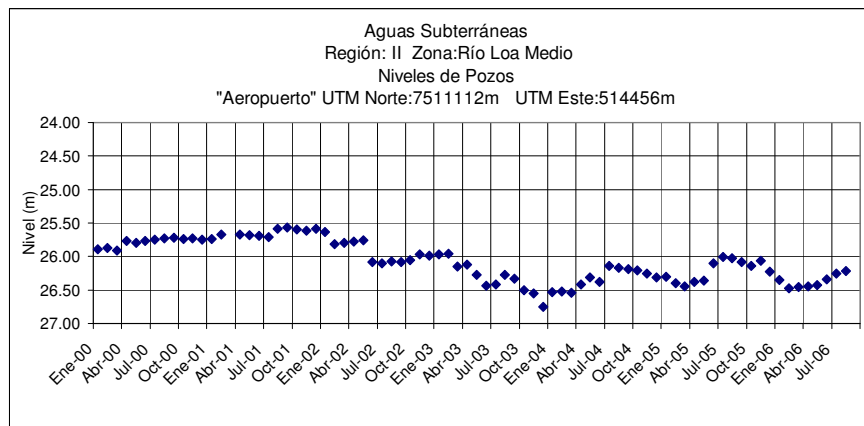


	Sep	Oct	Nov	Dic	Ene	Feb	Mar	Abr	May	Jun	Jul	Ago
2005-2006	19.60	20.82	18.78	18.86	18.84	26.30	21.59	22.01	22.16	22.01	22.20	23.16

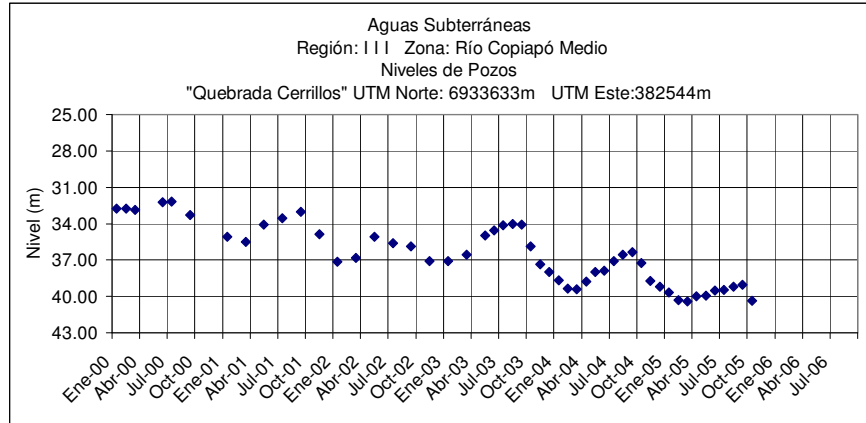
(Dinámico)



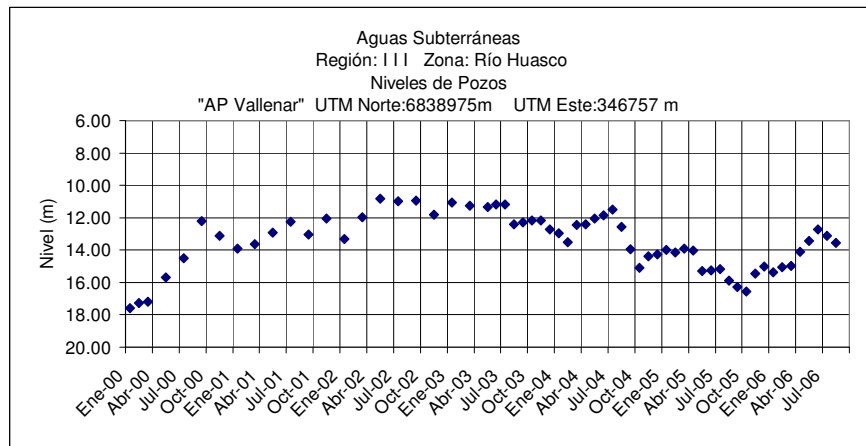
	Sep	Oct	Nov	Dic	Ene	Feb	Mar	Abr	May	Jun	Jul	Ago
2005-2006	8.95	10.15	9.55	9.58	10.11	10.13	10.46	9.94	10.39	10.04	10.35	9.87



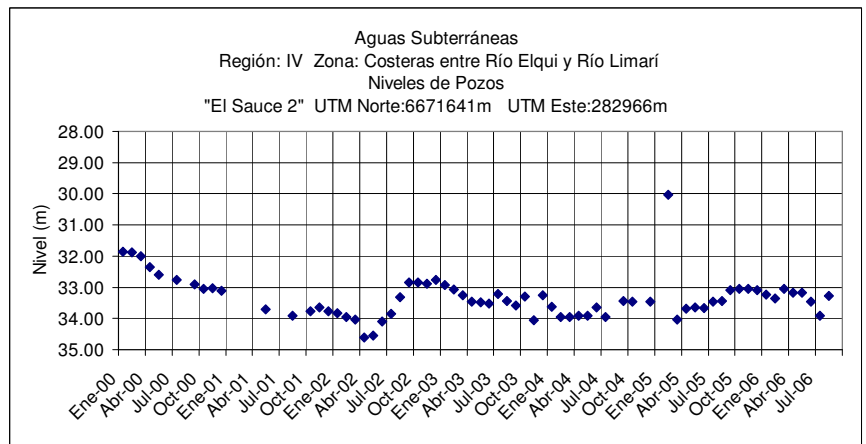
	Sep	Oct	Nov	Dic	Ene	Feb	Mar	Abr	May	Jun	Jul	Ago
2005-2006	26.08	26.14	26.06	26.23	26.35	26.47	26.46	26.45	26.43	26.34	26.25	26.22



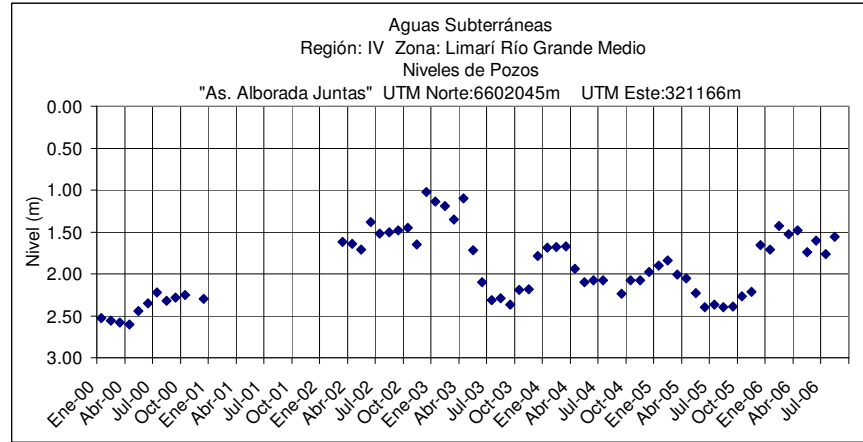
	Sep	Oct	Nov	Dic	Ene	Feb	Mar	Abr	May	Jun	Jul	Ago
2005-2006	39.06	40.36	Seco	Seco	Seco	Seco	Seco	Seco	Seco	Seco	Seco	Seco



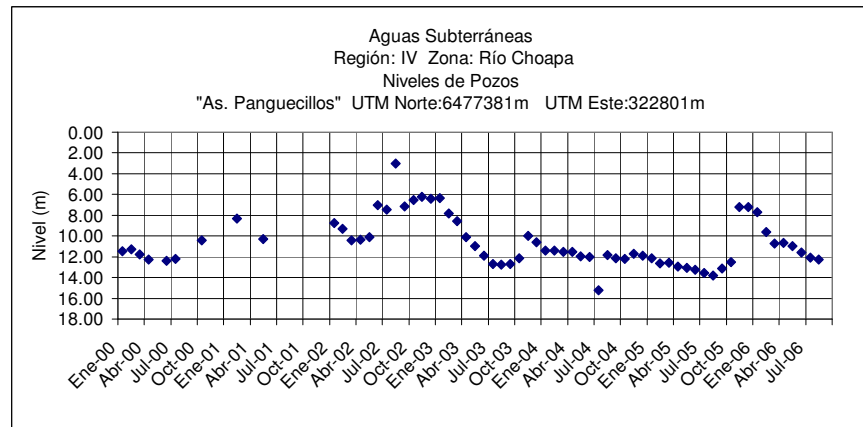
	Sep	Oct	Nov	Dic	Ene	Feb	Mar	Abr	May	Jun	Jul	Ago
2005-2006	16.29	16.56	15.45	15.03	15.37	15.07	14.97	14.09	13.42	12.73	13.11	13.57



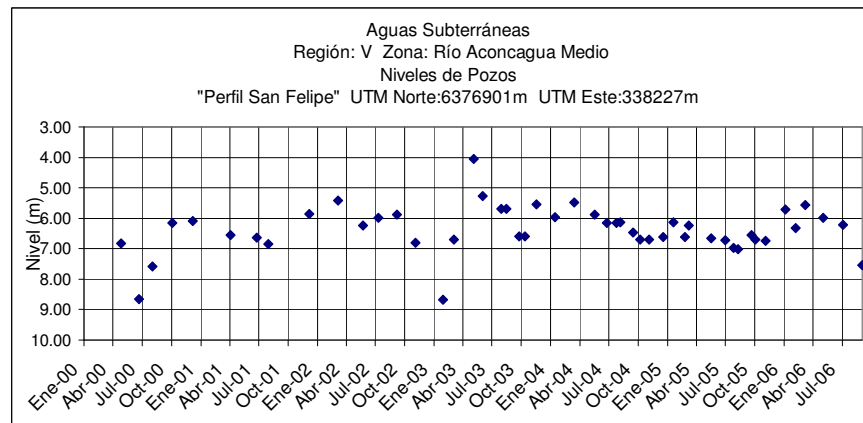
	Sep	Oct	Nov	Dic	Ene	Feb	Mar	Abr	May	Jun	Jul	Ago
2005-2006	33.10	33.06	33.05	33.10	33.23	33.36	33.04	33.18	33.17	33.47	33.92	33.27



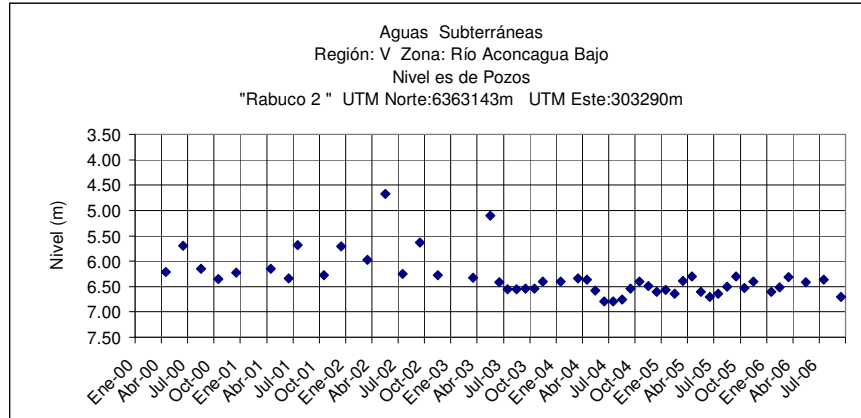
	Sep	Oct	Nov	Dic	Ene	Feb	Mar	Abr	May	Jun	Jul	Ago
2005-2006	2.39	2.27	2.21	1.66	1.71	1.43	1.53	1.48	1.74	1.60	1.76	1.56



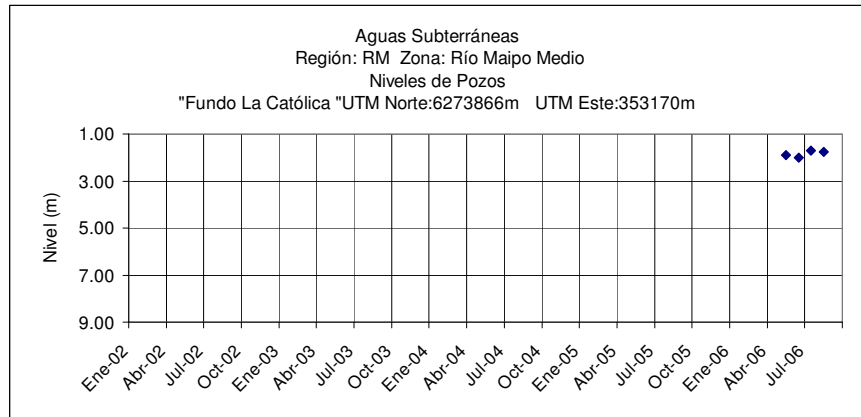
	Sep	Oct	Nov	Dic	Ene	Feb	Mar	Abr	May	Jun	Jul	Ago
2005-2006	13.16	12.49	7.24	7.21	7.68	9.61	10.72	10.68	10.96	11.58	12.08	12.26



	Sep	Oct	Nov	Dic	Ene	Feb	Mar	Abr	May	Jun	Jul	Ago
2005-2006	6.55	6.70	6.75	.	5.71	6.33	5.57	.	5.99	.	6.22	.

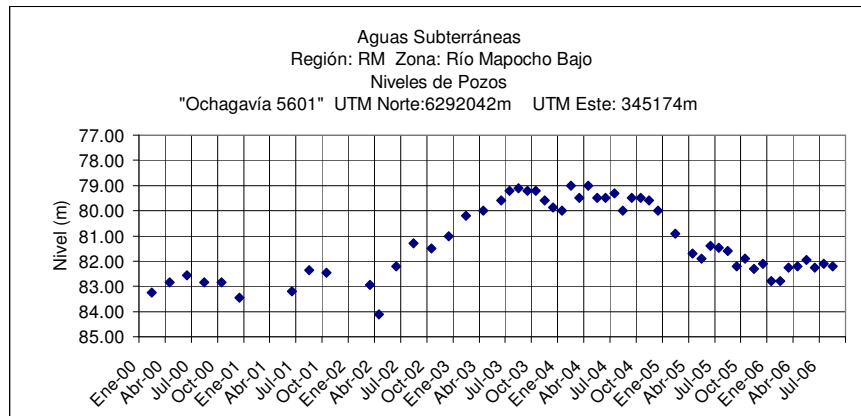


	Sep	Oct	Nov	Dic	Ene	Feb	Mar	Abr	May	Jun	Jul	Ago
2005-2006	6.30	6.53	6.40	.	6.61	6.52	6.32	.	6.42	.	6.37	.

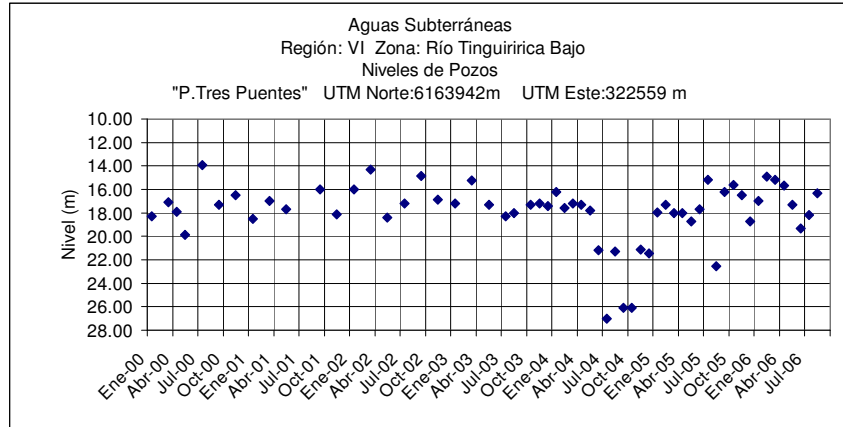


	Sep	Oct	Nov	Dic	Ene	Feb	Mar	Abr	May	Jun	Jul	Ago
2005-2006	1.90	2.00	1.70	1.75

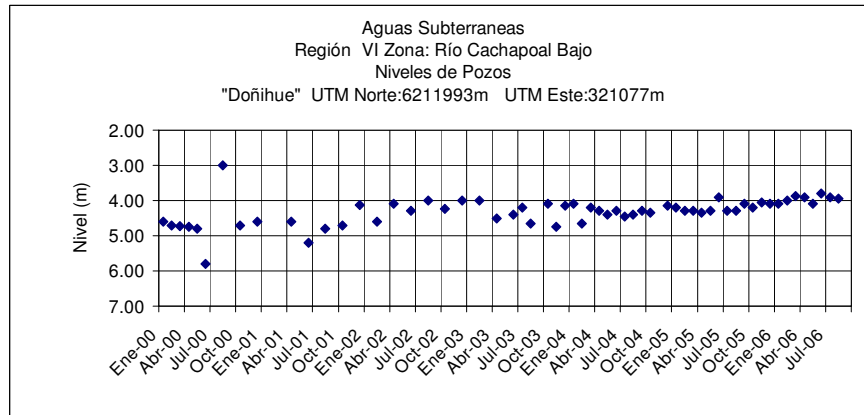
Nuevo pozo, reemplaza a pozo "El Cruceral" embancado.



	Sep	Oct	Nov	Dic	Ene	Feb	Mar	Abr	May	Jun	Jul	Ago
2005-2006	82.20	81.90	82.30	82.10	82.80	82.80	82.25	82.20	81.95	82.25	82.10	82.20



	Sep	Oct	Nov	Dic	Ene	Feb	Mar	Abr	May	Jun	Jul	Ago
2005-2006	16.20	15.60	16.50	18.75	17.00	14.90	15.20	15.70	17.30	19.30	18.20	16.30



	Sep	Oct	Nov	Dic	Ene	Feb	Mar	Abr	May	Jun	Jul	Ago
2005-2006	4.10	4.20	4.05	4.10	4.10	4.00	3.88	3.90	4.10	3.80	3.90	3.95