

DE : JAVIER NARBONA NARANJO
ING. JEFE DEPARTAMENTO DE HIDROLOGIA

*INFORMACION PLUVIOMETRICA, FLUVIOMETRICA,
ESTADO DE EMBALSES Y AGUAS SUBTERRANEAS*

Contenido :

- 1.- Informe pluviométrico
- 2.- Volúmenes de embalses
- 3.- Informe fluviométrico
- 4.- Informe aguas subterráneas

En Internet (www.dga.cl) se publica: .
-Los informes de este boletín
-Caudales en tiempo real

NOTA: Datos provisorios sujetos a modificaciones posteriores

INFORME PLUVIOMETRICO NACIONAL N°12

ESTACIONES	DICIEMBRE	TOTALES AL 31 DE DICIEMBRE			EXCESO O DÉFICIT (%)
		2006 (mm)	2005 (mm)	PROMEDIO (mm)	
CENTRAL CHAPIQUÍÑA	0.0	155.5	94.5	163.0*	- 5
EMBALSE CONCHI	0.0	34.2	27.0	19.1*	79
CALAMA	0.0	0.7	7.0	4.2	- 84
ANTOFAGASTA	0.0	11.5	0.5	4.2	174
COPIAPÓ	0.0	0.0	18.7	13.2	-100
EMBALSE LAUTARO	0.0	1.0	31.5	30.7	- 97
VALLENAR	0.0	2.0	28.6	34.3	- 94
RIVADAVIA	0.0	43.0	86.9	94.8	- 55
VICUÑA	0.0	51.4	65.6	95.2	- 46
LA SERENA	0.0	68.6	62.4	81.8	- 16
OVALLE	0.0	66.2	51.8	103.3	- 36
EMBALSE PALOMA	0.0	77.7	80.4	135.4	- 43
COGOTÍ 18	0.0	129.5	120.0	186.3	- 30
HUINTIL	0.0	173.0	159.7	223.3	- 23
COIRÓN	0.0	226.6	283.3	333.7	- 32
VILCUYA	0.0	366.7	614.0	337.8	9
SAN FELIPE	0.0	268.2	251.0	207.1	29
LAGO PEÑUELAS	0.0	764.0	718.6	616.7	24
EMBALSE EL YESO	0.0	667.3	1325.6	540.4	23
CERRO CALÁN	0.0	396.8	657.6	404.3	- 2
SANTIAGO (MOP)	0.0	374.1	508.4	311.2	20
RANCAGUA	0.0	528.5	579.3	414.8	27
SAN FERNANDO	0.0	824.3	1037.3	699.4	18
CONVENTO VIEJO	7.5	779.5	1081.7	694.0	12
CURICO	12.0	688.3	958.0	705.3	- 2
TALCA	16.6	767.9	855.5	646.0	19
COLORADO	20.6	1684.1	1892.4	1405.5	20
LINARES	31.4	970.0	1097.0	911.6	6
PARRAL	36.0	1139.6	1061.7	965.8	18
EMBALSE DIGUA	50.0	1744.1	1793.7	1494.4	17
CHILLÁN	77.2	1268.3	1241.4	1003.0	26
CONCEPCIÓN	55.2	1477.0	1450.0	1176.1	26
LOS ÁNGELES	75.0	1408.2	1239.1	1106.6	27
CAÑETE	68.1	1608.5	1547.5	1250.9	29
ANGOL	38.0	1418.4	1449.1	1071.0	32
TEMUCO	68.2	1543.4	1586.8	1187.1	30
VALDIVIA	171.4	2283.1	2419.5	2174.9	5
OSORNO	112.1	1534.2	1399.9	1533.7	0
PUERTO MONTT	280.2	2759.8	2227.9	1908.5	45
COYHAIQUE	125.2	1207.0	1070.6	1199.1	1
PUNTA ARENAS	62.1	675.7	565.5	434.4	56

Promedios acumulados para el período 1961-1990 (D.G.A)

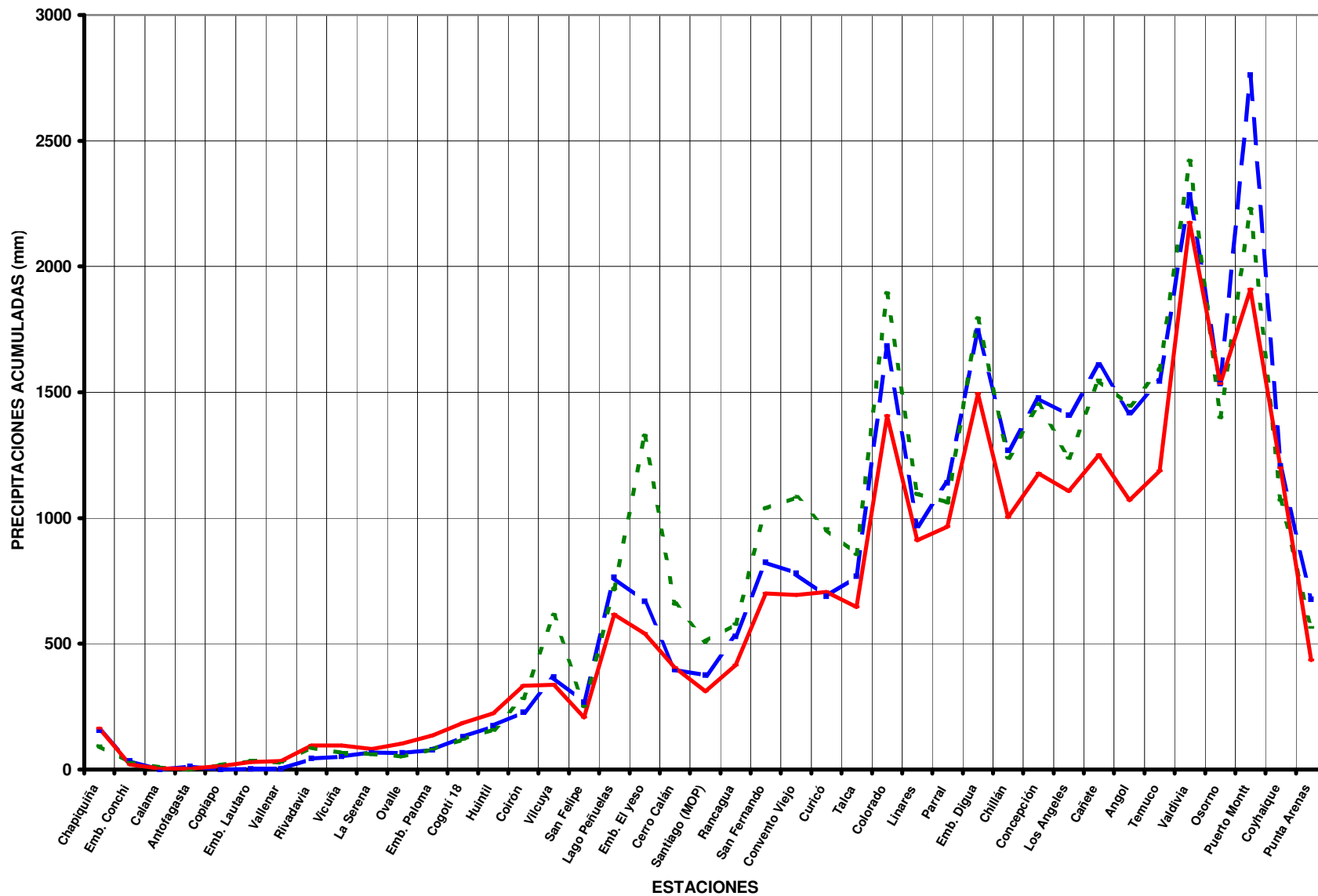
* : Promedios calculados para períodos inferiores a 30 años
Valores expresados en milímetros (1 mm = 1 lt x m2)

TOTALES DE LLUVIA HASTA EL
31 de Diciembre de 2006

Normal

Año 2006

Año 2005



ESTADO DE EMBALSES

Ultimo día del mes
(Volúmenes en mill-m³)

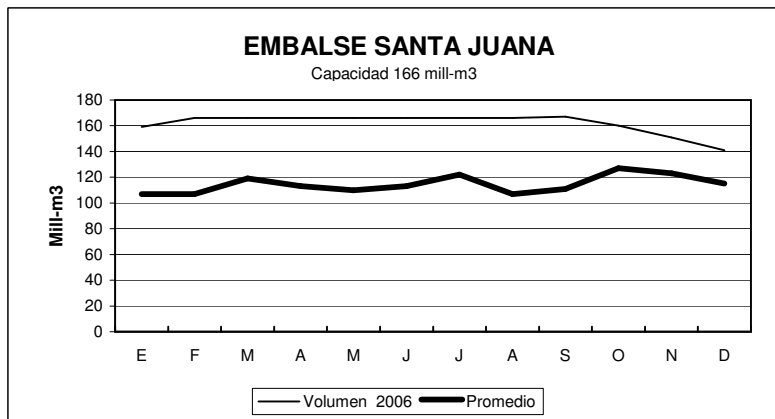
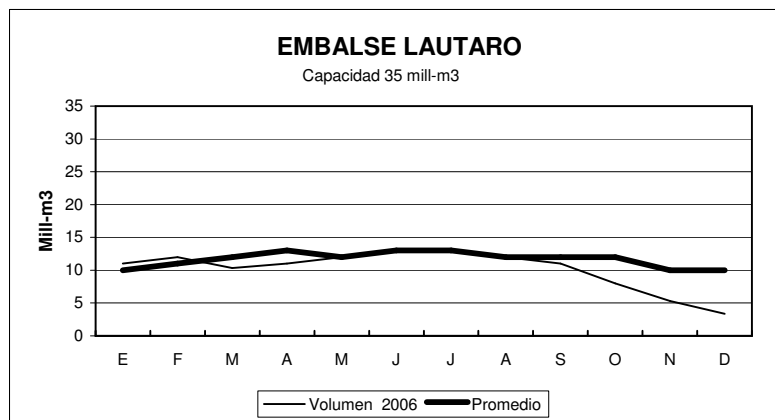
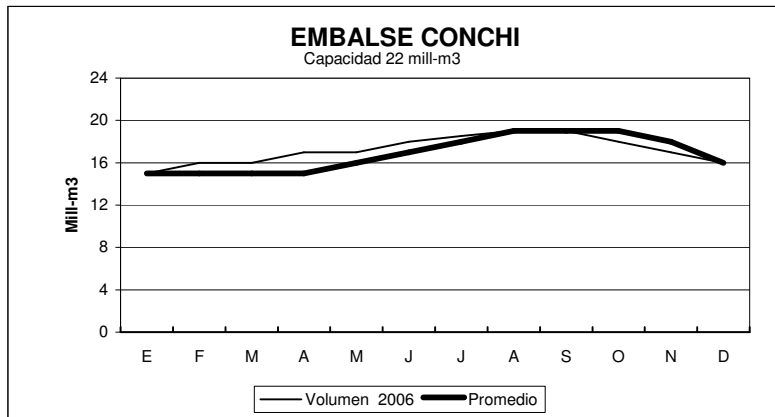
EMBALSE	REGION	CUENCA	CAPACIDAD	PROMEDIO	Diciembre	
				HISTORICO MENSUAL	2006	2005
Conchi	II	Loa	22	16	16	16
Lautaro	III	Copiapó	35	10	3	8
Santa Juana	III	Huasco	166	127	141	148
La Laguna	IV	Elqui	40	24	35	38
Puclaro	IV	Elqui	200	130	195	189
Recoleta	IV	Limarí	100	67	79	91
La Paloma	IV	Limarí	748	435	549	583
Cogotí	IV	Limarí	150	88	67	104
Culimo	IV	Quilimarí	10	4.4	1.6	2.4
Corrales	IV	Illapel	50	43	49	46
Peñuelas	V	Peñuelas	95	27	26	29
El Yeso	RM	Maipo	256	180	203	206
Rungue	RM	Maipo	2.2	1.7	1.3	2.2
Rapel	VI	Rapel	695	600	625	629
Colbún	VII	Maule	1544	1343	1544	1544
Lag. Maule	VII	Maule	1420	1056	1408	1001
Bullileo	VII	Maule	60	56	60	60
Digua	VII	Maule	220	167	155	220
Tutuvén	VII	Maule	15	9.5	10	15
Coihueco	VIII	Itata	29	26	27	28
Lago Laja (&)	VIII	Bio-Bio	5582	3588	3689	3120

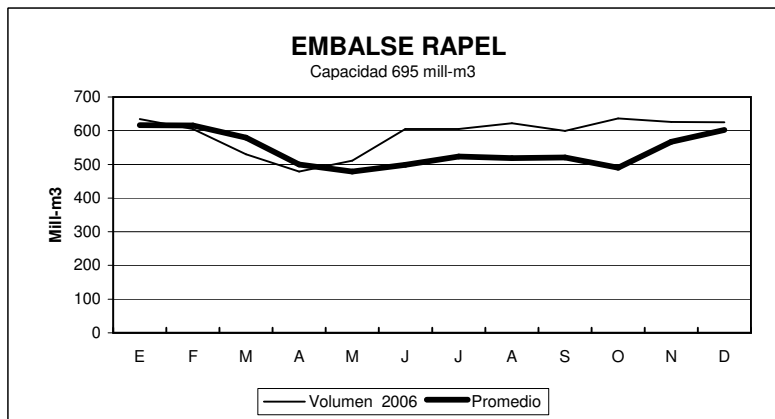
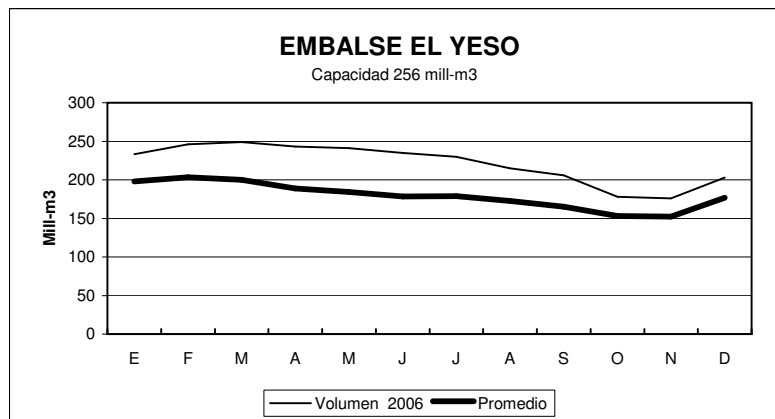
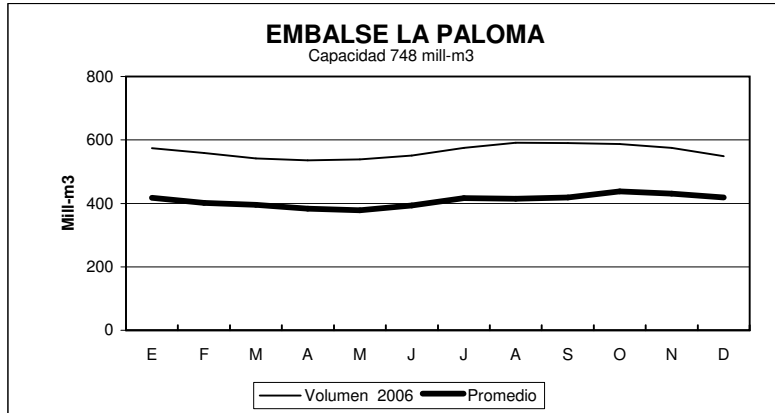
RESUMEN ANUAL

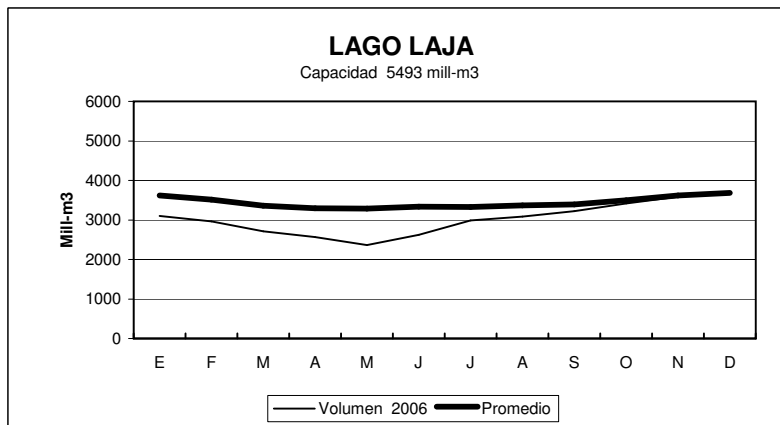
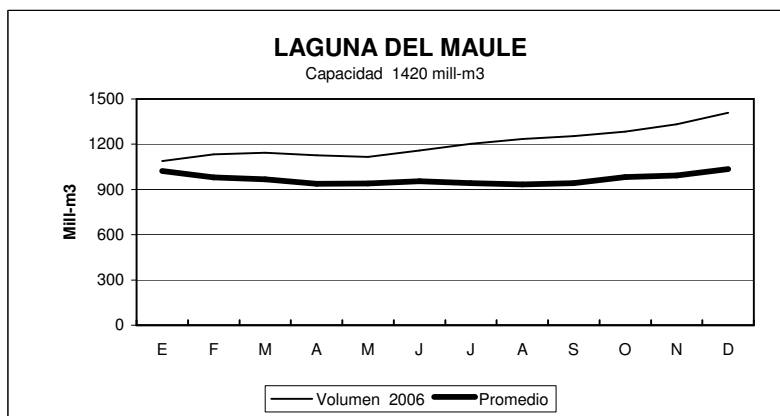
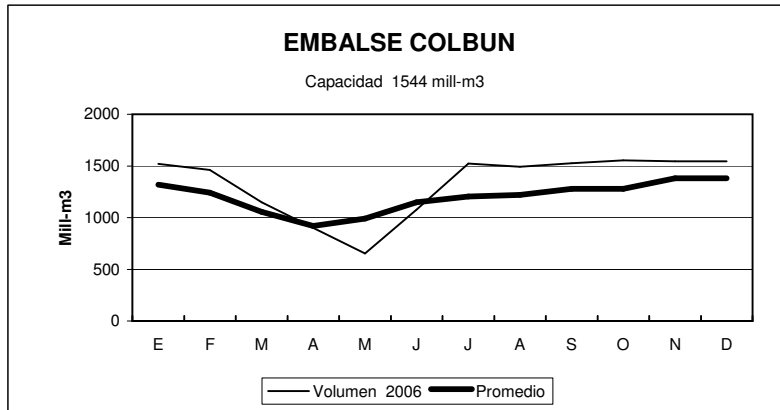
EMBALSE	2006											
	E	F	M	A	M	J	J	A	S	O	N	D
Conchi	15	16	16	17	17	18	19	19	19	18	17	16
Lautaro	11	12	10	11	12	13	13	12	11	8	5	3
Santa Juana	159	166	166	166	166	166	166	166	167	160	151	141
La Laguna	36	31	28	32	34	33	32	31	32	35	35	35
Puclaro	200	200	200	200	200	196	197	197	192	189	192	195
Recoleta	91	100	92	94	95	97	97	95	91	87	82	79
La Paloma	574	559	542	536	539	551	575	591	590	587	575	549
Cogotí	98	92	86	82	79	79	83	85	82	81	75	67
Culimo	1.9	1.2	0.4	0.1	0.4	0.4	0.7	1.3	1.4	1.6	1.7	1.6
Corrales	49	49	49	48	48	48	50	51	50	50	50	49
Peñuelas	27	24	22	21	20	21	30	34	33	32	29	26
El Yeso	233	246	249	243	241	235	230	215	206	178	176	203
Rungue	1.0	0.6	0.3	0.2	0.2	0.3	2.0	2.0	2.0	2.0	1.8	1.3
Rapel	634	605	530	479	511	605	605	622	599	636	626	625
Colbún	1519	1462	1148	902	654	1078	1522	1491	1525	1555	1544	1544
Lag. Maule	1088	1134	1144	1127	1115	1159	1202	1234	1254	1283	1332	1408
Bullileo	49	24	0	0	7	30	60	60	60	60	60	60
Digua	93	34	11	8.6	2.7	93	179	219	220	220	220	155
Tutuvén	6.1	4	2.0	3.4	3.0	10	11	12	12	14	15	10
Coihueco	22	14	6.6	3.9	6	10	16	27	29	30	29	27
Lago Laja (&)	3104	2960	2709	2566	2365	2620	2989	3083	3224	3421	3590	3689

(&) : Volumen sobre cota 1300 msnm

ESTADO DE EMBALSES

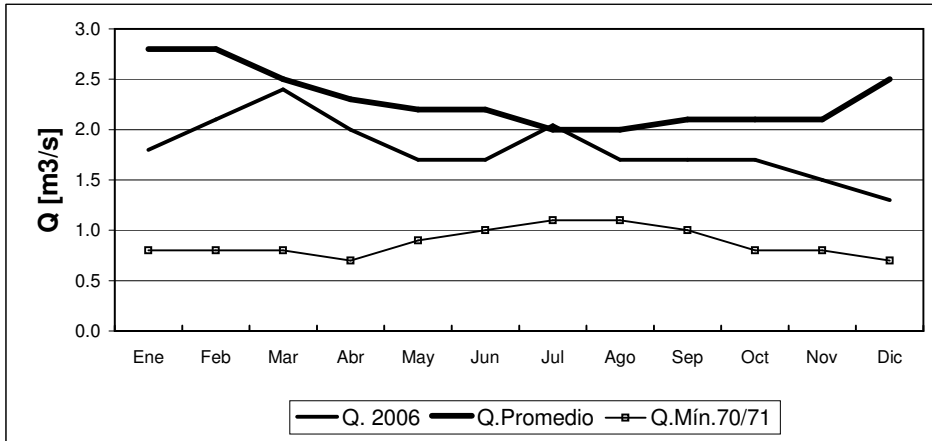






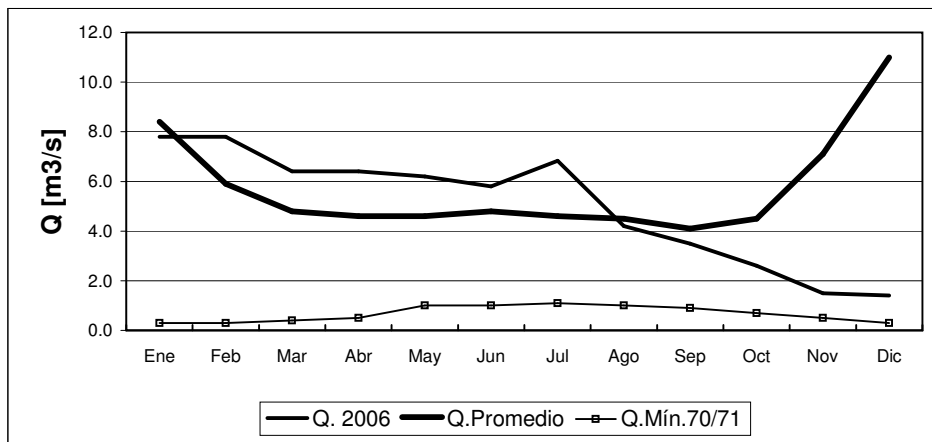
INFORME FLUVIOMETRICO
Caudales medios mensuales en m3/seg
RIO COPIAPO EN LA PUERTA

Dic-06



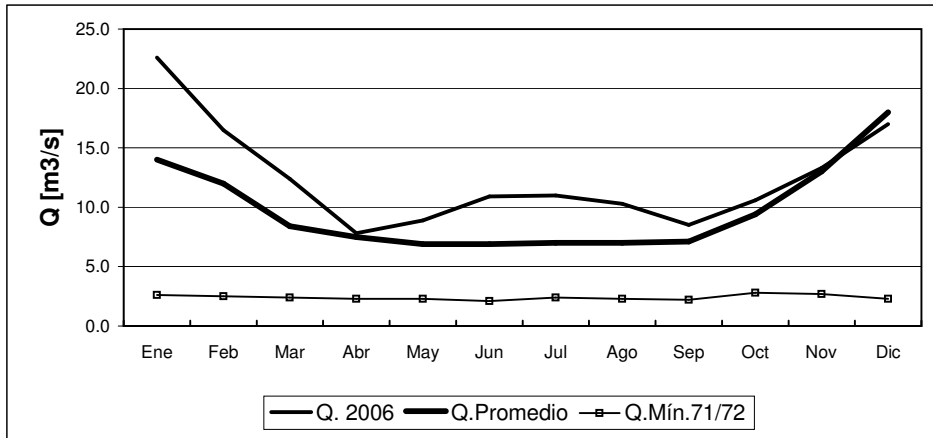
	Ene	Feb	Mar	Abr	May	Jun	Jul	Ago	Sep	Oct	Nov	Dic
Q. 2006	1.8	2.1	2.4	2.0	1.7	1.7	2.0	1.7	1.7	1.7	1.5	1.3
Q. Promedio	2.8	2.8	2.5	2.3	2.2	2.2	2.0	2.0	2.1	2.1	2.1	2.5
Q. MÍN.70/71	0.8	0.8	0.8	0.7	0.9	1.0	1.1	1.1	1.0	0.8	0.8	0.7

RIO HUASCO EN ALGODONES



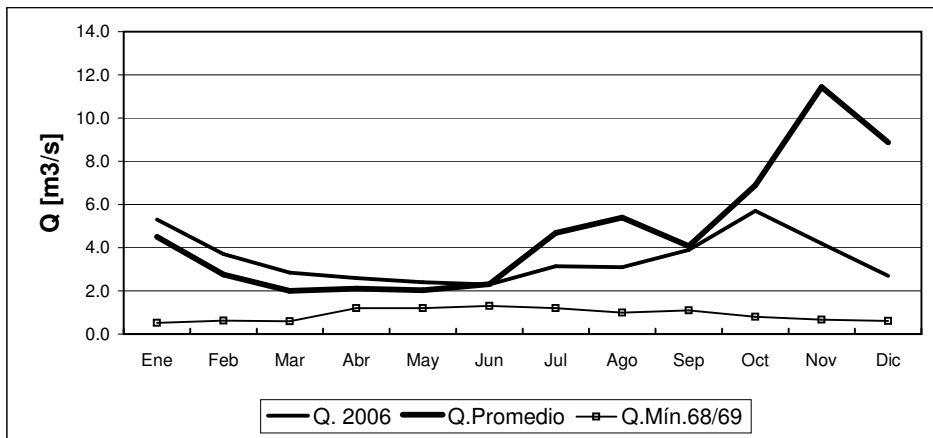
	Ene	Feb	Mar	Abr	May	Jun	Jul	Ago	Sep	Oct	Nov	Dic
Q. 2006	7.8	7.8	6.4	6.4	6.2	5.8	6.8	4.2	3.5	2.6	1.5	1.4
Q. Promedio	8.4	5.9	4.8	4.6	4.6	4.8	4.6	4.5	4.1	4.5	7.1	11.0
Q. MÍN.70/71	0.3	0.3	0.4	0.5	1.0	1.0	1.1	1.0	0.9	0.7	0.5	0.3

RIO ELQUI EN ALGARROBAL



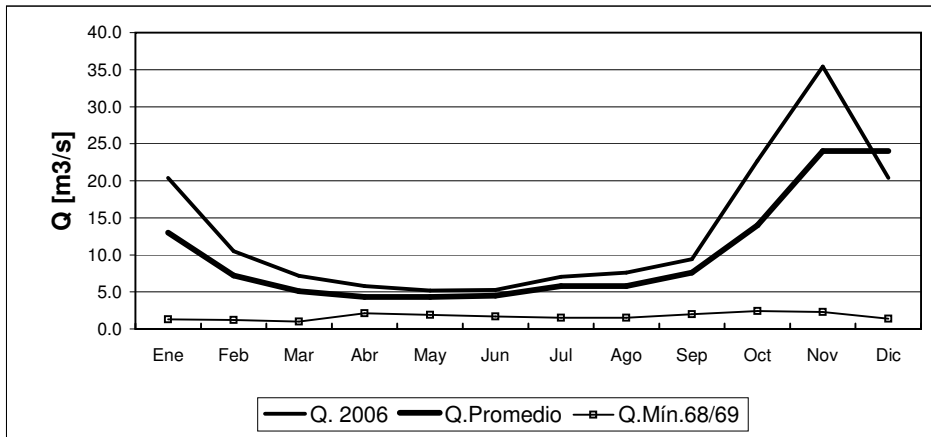
	Ene	Feb	Mar	Abr	May	Jun	Jul	Ago	Sep	Oct	Nov	Dic
Q. 2006	22.6	16.5	12.4	7.8	8.9	10.9	11.0	10.3	8.5	10.6	13.3	17.0
Q. Promedio	14.0	12.0	8.4	7.5	6.9	6.9	7.0	7.0	7.1	9.4	13.0	18.0
Q. Mín. 71/72	2.6	2.5	2.4	2.3	2.3	2.1	2.4	2.3	2.2	2.8	2.7	2.3

RIO GRANDE EN LAS RAMADAS



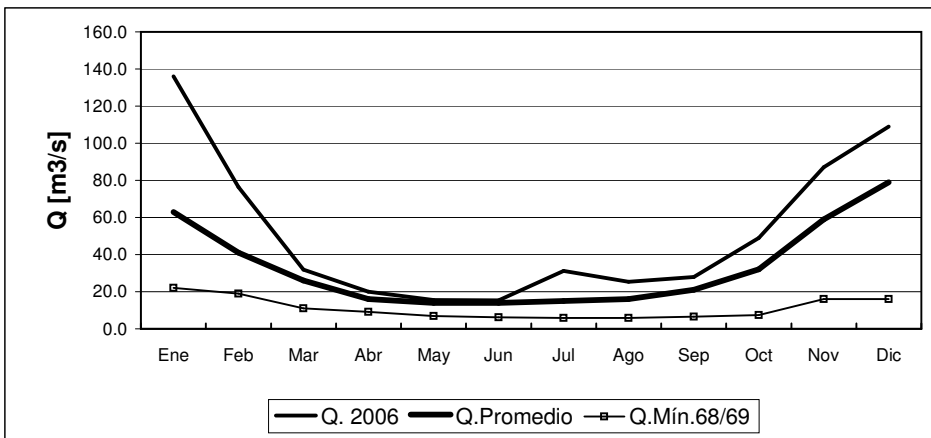
	Ene	Feb	Mar	Abr	May	Jun	Jul	Ago	Sep	Oct	Nov	Dic
Q. 2006	5.3	3.7	2.9	2.6	2.4	2.3	3.1	3.1	3.9	5.7	4.2	2.7
Q. Promedio	4.5	2.8	2.0	2.1	2.0	2.3	4.7	5.4	4.1	6.9	11.4	8.9
Q. Mín. 68/69	0.5	0.6	0.6	1.2	1.2	1.3	1.2	1.0	1.1	0.8	0.7	0.6

RIO CHOAPA EN CUNCUMEN



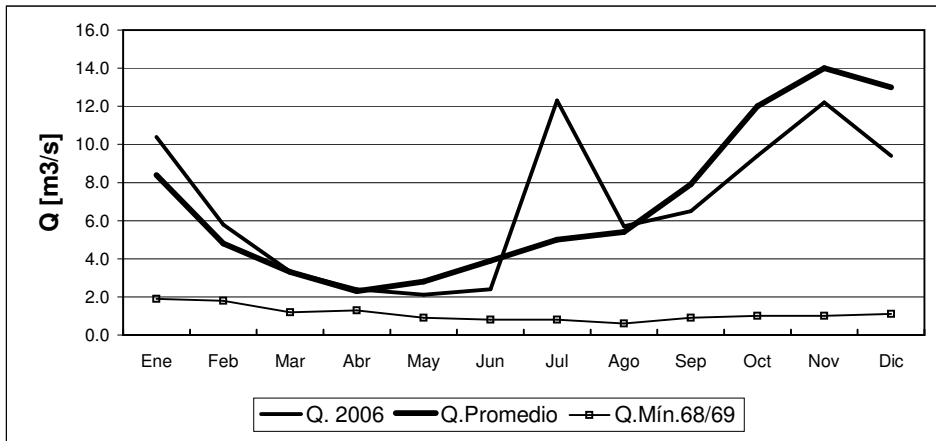
	Ene	Feb	Mar	Abr	May	Jun	Jul	Ago	Sep	Oct	Nov	Dic
Q. 2006	20.4	10.5	7.2	5.8	5.2	5.3	7.1	7.6	9.4	22.7	35.4	20.4
Q.Promedio	13.0	7.2	5.1	4.3	4.3	4.5	5.8	5.8	7.6	14.0	24.0	24.0
Q.Mín.68/69	1.3	1.2	1.0	2.1	1.9	1.7	1.5	1.5	2.0	2.4	2.3	1.4

RIO ACONCAGUA EN CHACABUQUITO



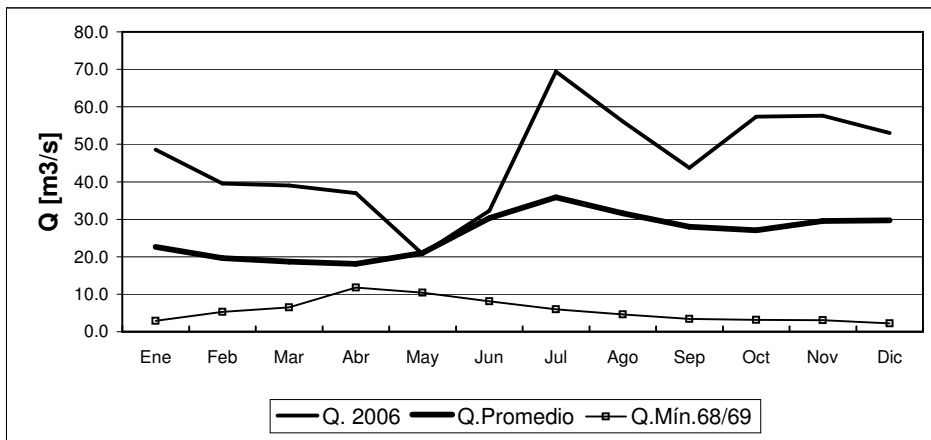
	Ene	Feb	Mar	Abr	May	Jun	Jul	Ago	Sep	Oct	Nov	Dic
Q. 2006	136.0	76.3	31.9	20.0	15.5	15.4	31.2	25.4	28.0	49.0	87.0	109.0
Q.Promedio	63.0	41.0	26.0	16.0	14.0	14.0	15.0	16.0	21.0	32.0	59.0	79.0
Q.Mín.68/69	22.0	19.0	11.0	9.1	6.9	6.2	5.9	5.9	6.6	7.4	16.0	16.0

RIO MAPOCHO EN LOS ALMENDROS



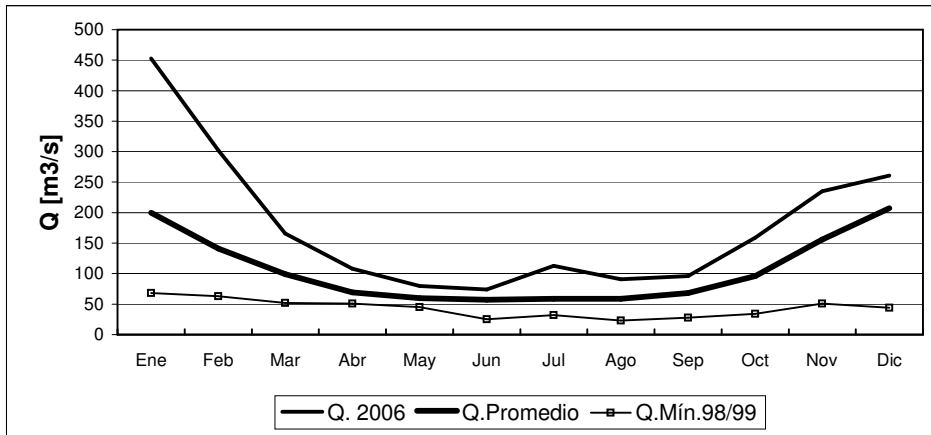
	Ene	Feb	Mar	Abr	May	Jun	Jul	Ago	Sep	Oct	Nov	Dic
Q. 2006	10.4	5.8	3.3	2.4	2.1	2.4	12.3	5.7	6.5	9.4	12.2	9.4
Q. Promedio	8.4	4.8	3.3	2.3	2.8	3.9	5.0	5.4	7.9	12.0	14.0	13.0
Q. Mín.68/69	1.9	1.8	1.2	1.3	0.9	0.8	0.8	0.6	0.9	1.0	1.0	1.1

RIO MAPOCHO EN RINCONADA DE MAIPU



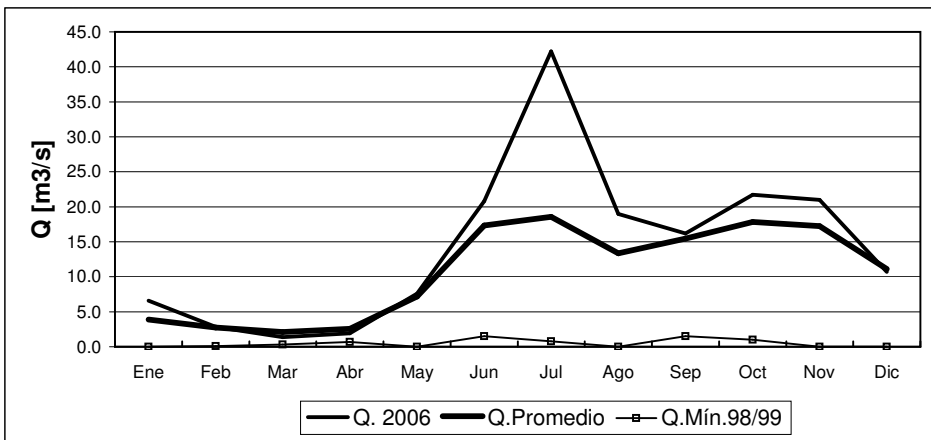
	Ene	Feb	Mar	Abr	May	Jun	Jul	Ago	Sep	Oct	Nov	Dic
Q. 2006	48.6	39.5	39.0	37.0	20.8	32.3	69.4	56.1	43.7	57.4	57.6	53.0
Q. Promedio	22.6	19.6	18.7	18.1	21.0	30.3	35.9	31.6	28.0	27.1	29.5	29.7
Q. Mín.68/69	2.9	5.3	6.5	11.8	10.4	8.1	6.0	4.6	3.4	3.2	3.1	2.2

RIO MAIPO EN EL MANZANO



	Ene	Feb	Mar	Abr	May	Jun	Jul	Ago	Sep	Oct	Nov	Dic
Q. 2006	453	302	166	108	80	74	113	91	96	159	235	261
Q. Promedio	200	141	99	69	60	57	59	59	68	96	156	207
Q. Mín.98/99	68	63	52	51	45	25	32	23	28	34	51	44

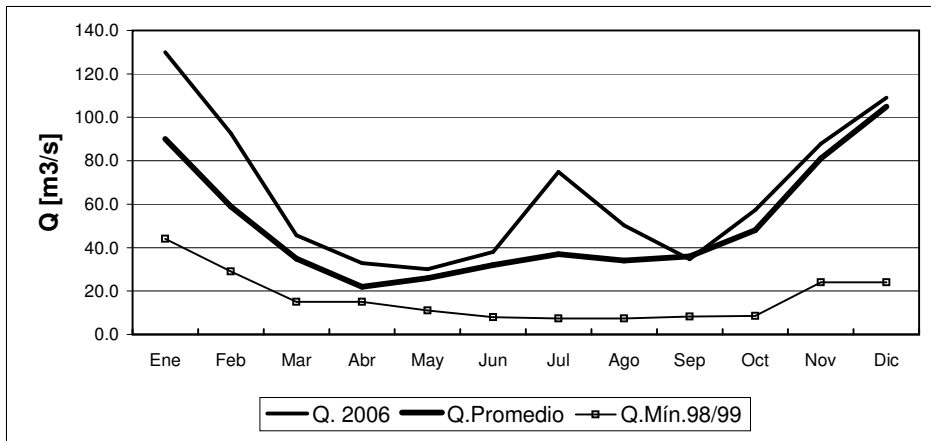
RIO CLARO EN EL VALLE 2



	Ene	Feb	Mar	Abr	May	Jun	Jul	Ago	Sep	Oct	Nov	Dic
Q. 2006	6.6	2.8	1.4	1.9	7.6	20.8	42.2	19.0	16.2	21.7	21.0	10.7 *
Q. Promedio	3.9	2.7	2.1	2.6	7.2	17.3	18.6	13.4	15.5	17.9	17.2	11.1
Q. Mín.98/99	0.0	0.1	0.3	0.7	0.0	1.5	0.8	0.0	1.5	1.0	0.0	0.0

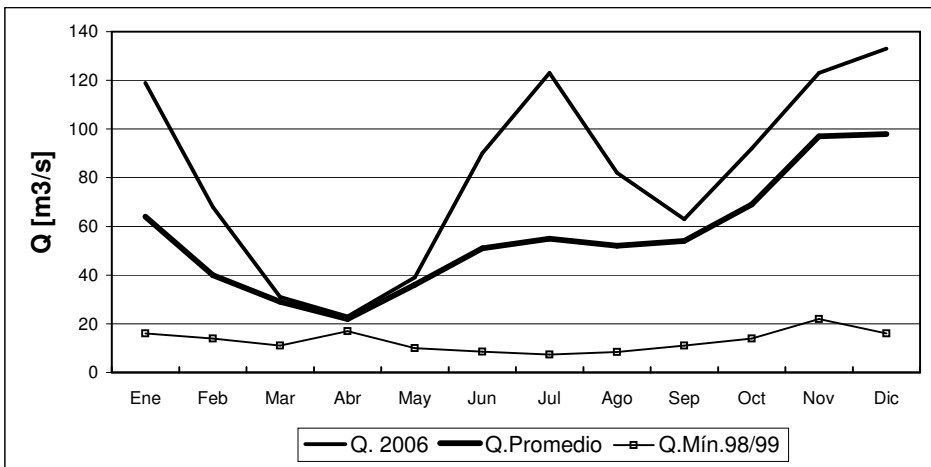
*Aforo

RIO TINGUIRIRICA BAJO BRIONES



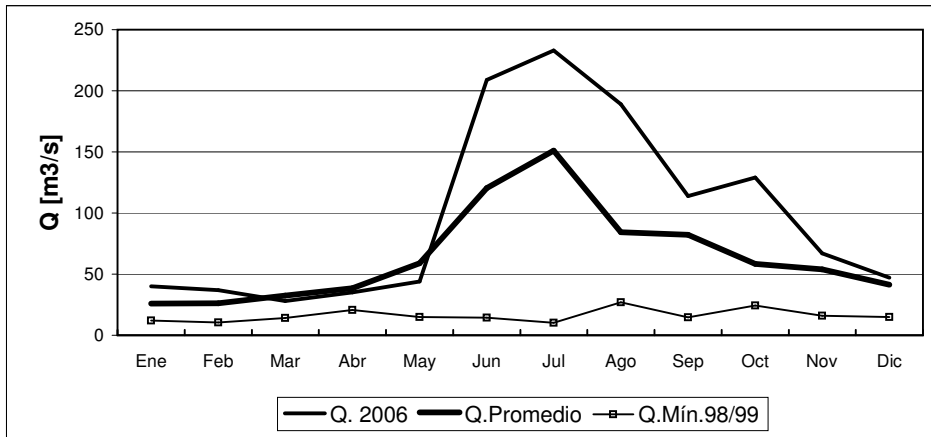
	Ene	Feb	Mar	Abr	May	Jun	Jul	Ago	Sep	Oct	Nov	Dic
Q. 2006	130.0	92.7	45.7	32.9	30.0	38.0	74.9	50.3	34.7	57.3	87.9	109.0
Q. Promedio	90.0	59.0	35.0	22.0	26.0	32.0	37.0	34.0	36.0	48.0	81.0	105.0
Q. Mín.98/99	44.0	29.0	15.0	15.0	11.0	8.0	7.4	7.4	8.2	8.5	24.0	24.0

RIO TENO DESPUES DE JUNTA



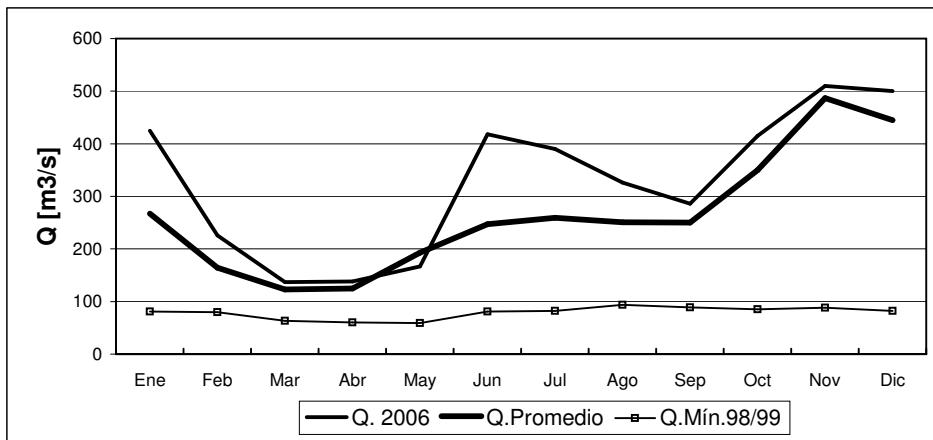
	Ene	Feb	Mar	Abr	May	Jun	Jul	Ago	Sep	Oct	Nov	Dic
Q. 2006	119	68	31	23	39	90	123	82	63	92	123	133
Q. Promedio	64	40	29	22	36	51	55	52	54	69	97	98
Q. Mín.98/99	16	14	11	17	10	8.6	7.4	8.4	11	14	22	16

RIO CLARO EN RAUQUEN



	Ene	Feb	Mar	Abr	May	Jun	Jul	Ago	Sep	Oct	Nov	Dic
Q. 2006	40	37	28	35	44	209	233	189	114	129	67	47
Q. Promedio	26	26	33	39	59	121	151	84	82	58	54	41
Q. Mín.98/99	12	10	14	21	15	15	10	27	15	24	16	15

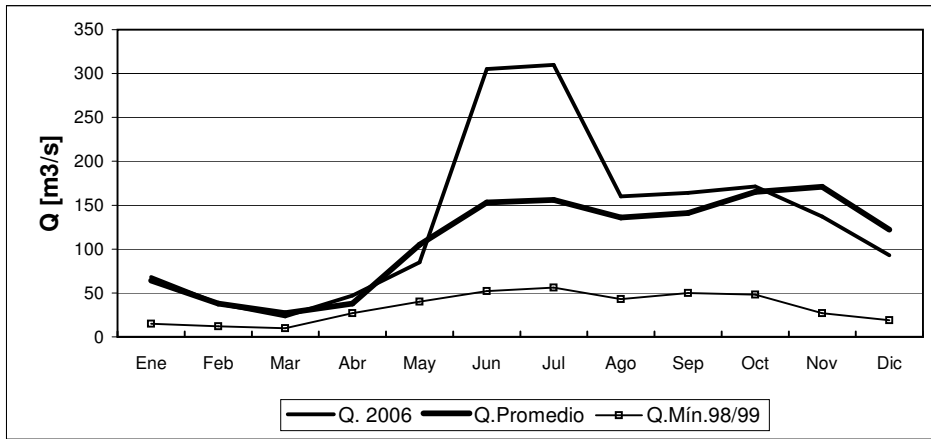
RIO MAULE EN ARMERILLO (R. N.)



	Ene	Feb	Mar	Abr	May	Jun	Jul	Ago	Sep	Oct	Nov	Dic
Q. 2006	425	226	137	138	167	418	390	326	286	415	510	500
Q. Promedio	267	164	123	125	193	247	259	251	250	350	487	445
Q. Mín.98/99	81	80	63	60	59	81	82	94	89	85	88	82

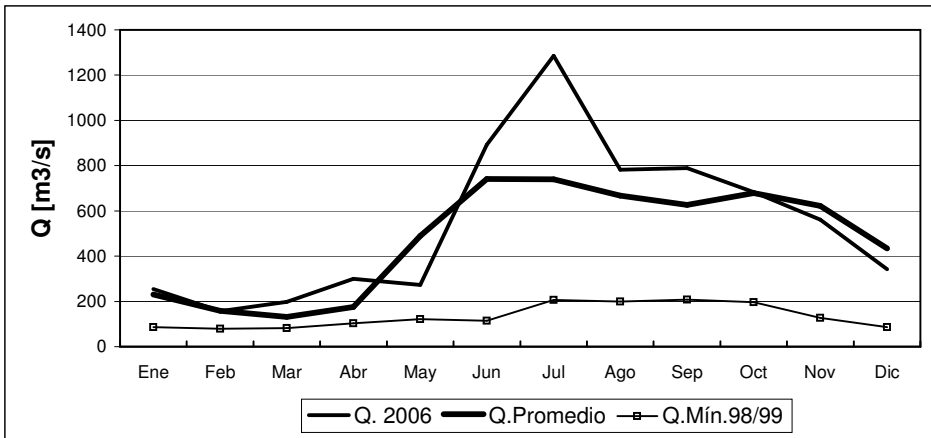
nota: caudal julio 2006 corresponde a últimos 15 días

RIO ÑUBLE EN SAN FABIAN



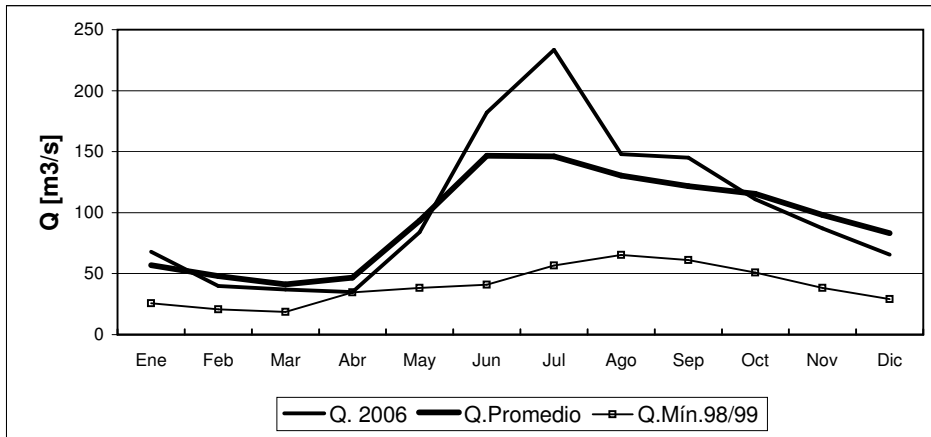
	Ene	Feb	Mar	Abr	May	Jun	Jul	Ago	Sep	Oct	Nov	Dic
Q. 2006	68	38	23	47	85	305	310	160	164	171	137	93
Q. Promedio	64	38	27	38	105	153	156	136	141	165	171	122
Q. Mín.98/99	15	12	10	27	40	52	56	43	50	48	27	19

RIO BIO-BIO EN RUCALHUE



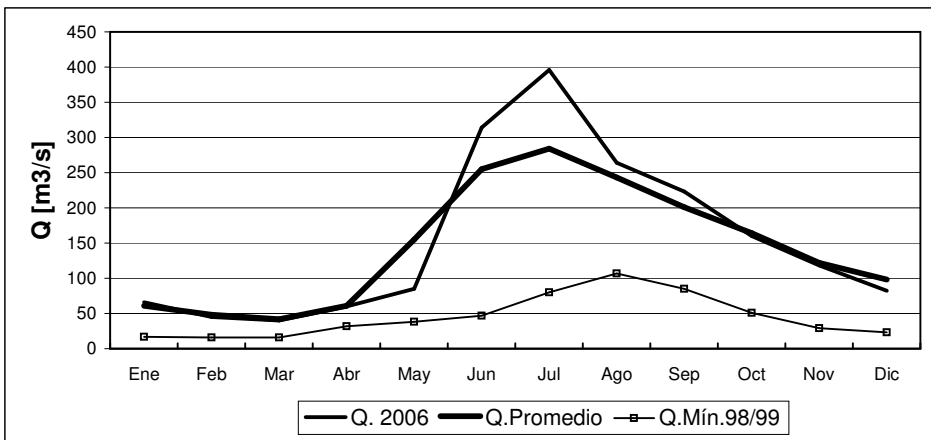
	Ene	Feb	Mar	Abr	May	Jun	Jul	Ago	Sep	Oct	Nov	Dic
Q. 2006	255	157	198	300	273	892	1285	782	789	683	561	342
Q. Promedio	231	158	132	176	489	741	740	668	627	679	622	434
Q. Mín.98/99	86	79	82	103	122	114	207	200	208	197	127	86

RIO CAUTIN EN RARI-RUCA



	Ene	Feb	Mar	Abr	May	Jun	Jul	Ago	Sep	Oct	Nov	Dic
Q. 2006	68	40	37	35	84	182	233	148	145	111	87	66
Q.Promedio	57	48	41	47	93	147	146	131	122	116	98	83
Q.Mín.98/99	26	21	19	35	38	41	57	65	61	51	38	29

RIO CAUTIN EN CAJON

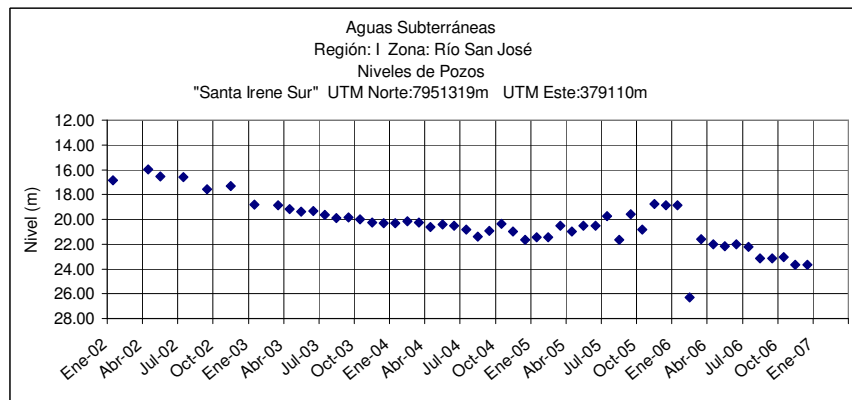


	Ene	Feb	Mar	Abr	May	Jun	Jul	Ago	Sep	Oct	Nov	Dic
Q. 2006	66	45	40	60	85	314	396	264	223	160	118	82
Q.Promedio	61	48	42	61	155	255	284	243	201	164	122	98
Q.Mín.98/99	17	16	16	32	38	47	80	107	85	51	29	23

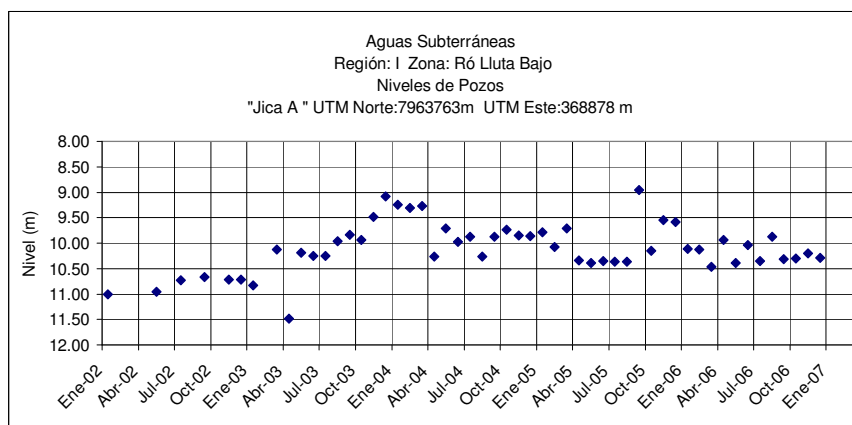
Informe de Aguas Subterráneas

Niveles de Pozos en metros

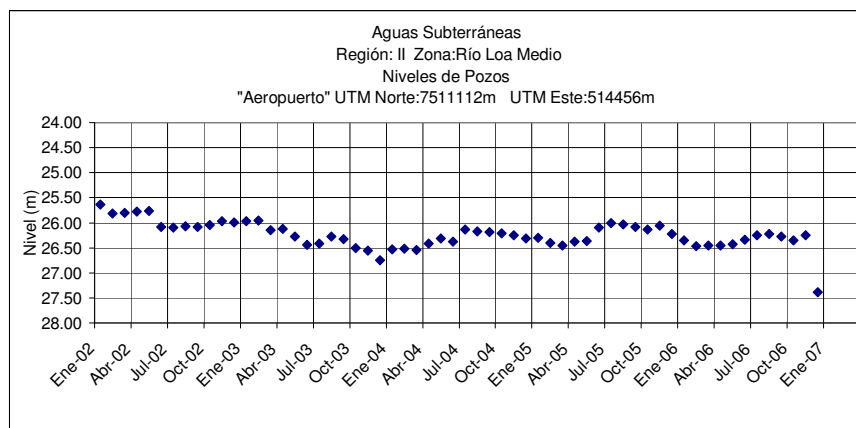
*Gráficos de últimos cinco años.



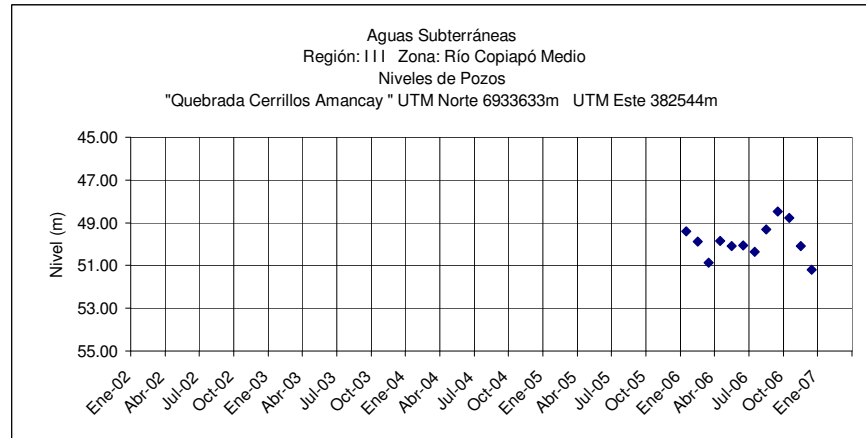
	Ene	Feb	Mar	Abr	May	Jun	Jul	Ago	Sep	Oct	Nov	Dic
2005-2006	18.84	26.30	21.59	22.01	22.16	22.01	22.20	23.16	23.13	23.05	23.67	23.64



	Ene	Feb	Mar	Abr	May	Jun	Jul	Ago	Sep	Oct	Nov	Dic
2005-2006	11.11	10.13	10.46	9.94	10.39	10.04	10.35	9.87	10.32	10.30	10.20	10.29

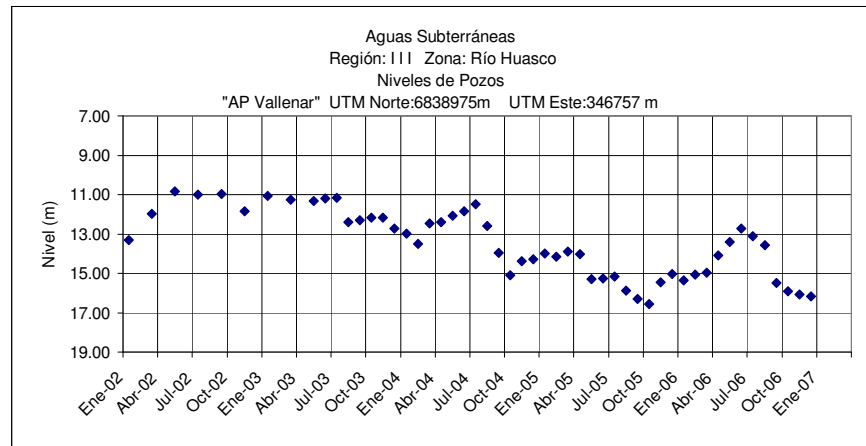


	Ene	Feb	Mar	Abr	May	Jun	Jul	Ago	Sep	Oct	Nov	Dic
2005-2006	26.35	26.47	26.46	26.45	26.43	26.34	26.25	26.22	26.28	26.35	26.25	27.39

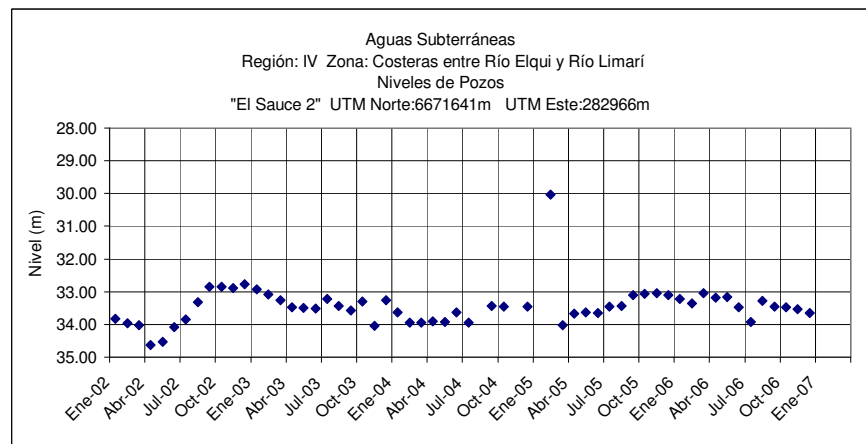


	Ene	Feb	Mar	Abr	May	Jun	Jul	Ago	Sep	Oct	Nov	Dic
2005-2006	49.40	49.89	50.87	49.85	50.08	50.06	50.36	49.30	48.47	48.77	50.09	51.21

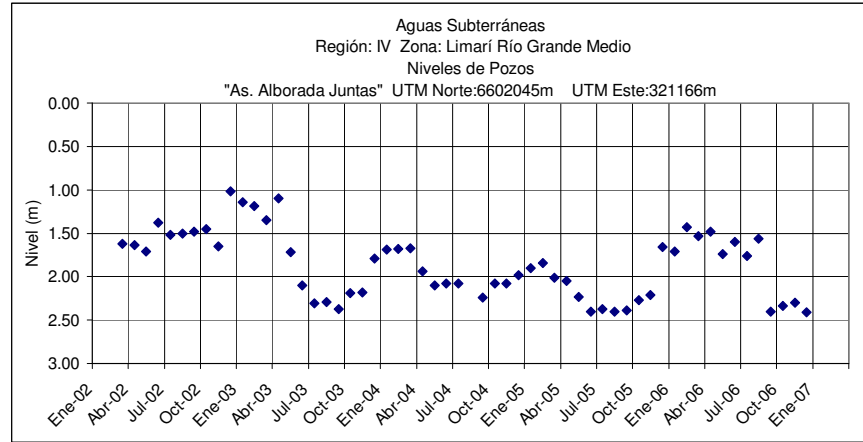
(.) Embancado



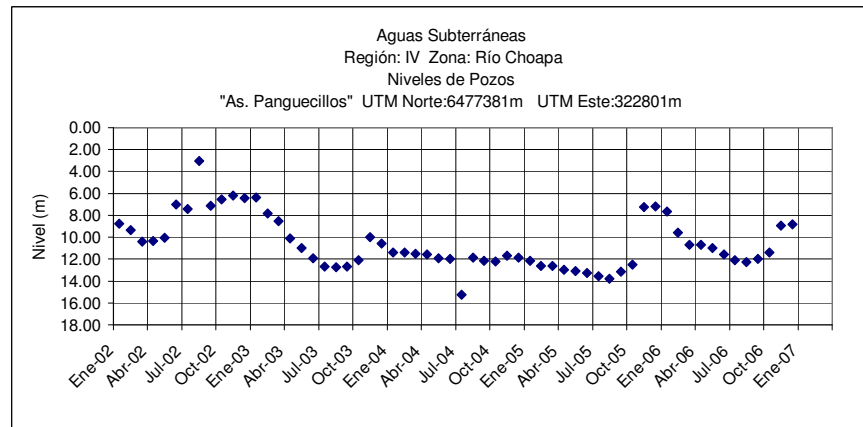
	Ene	Feb	Mar	Abr	May	Jun	Jul	Ago	Sep	Oct	Nov	Dic
2005-2006	15.37	15.07	14.97	14.09	13.42	12.73	13.11	13.57	15.50	15.92	16.07	16.17



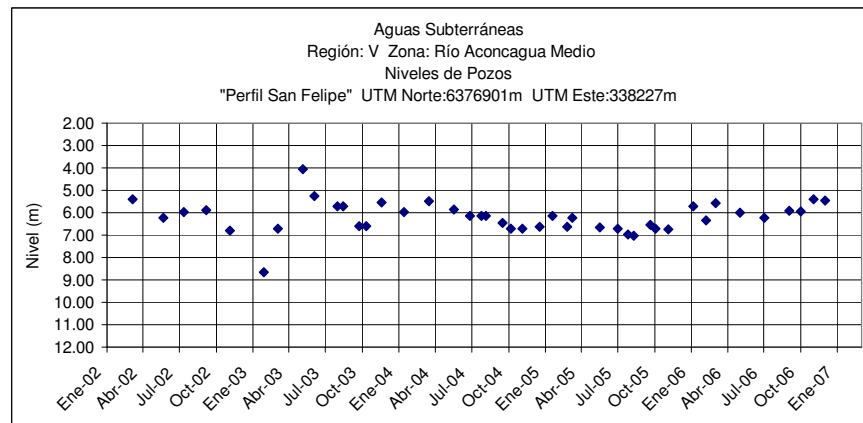
	Ene	Feb	Mar	Abr	May	Jun	Jul	Ago	Sep	Oct	Nov	Dic
2005-2006	33.23	33.36	33.04	33.18	33.17	.	33.92	33.27	33.45	33.47	33.54	33.65



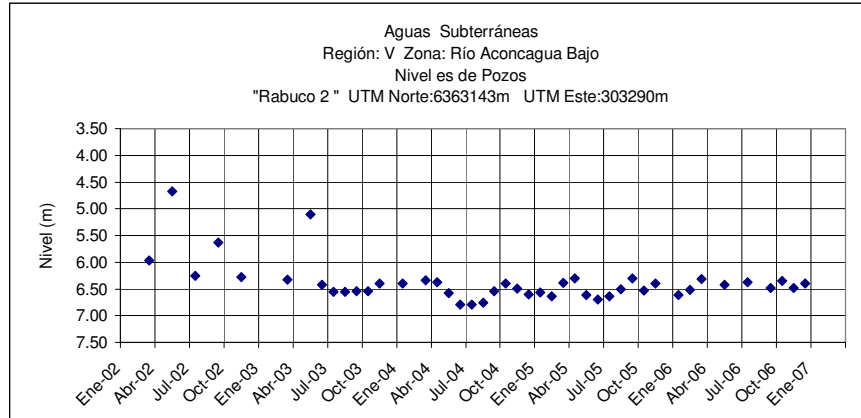
	Ene	Feb	Mar	Abr	May	Jun	Jul	Ago	Sep	Oct	Nov	Dic
2005-2006	1.71	1.43	1.53	1.48	1.54	1.60	.	1.56	2.40	2.34	2.30	2.41



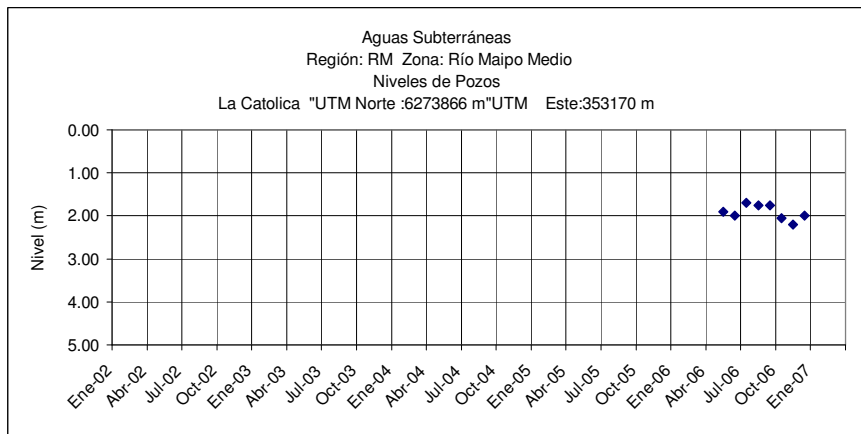
	Ene	Feb	Mar	Abr	May	Jun	Jul	Ago	Sep	Oct	Nov	Dic
2005-2006	7.68	9.61	10.72	10.68	10.96	11.58	12.08	12.26	12.00	11.40	8.93	8.85



	Ene	Feb	Mar	Abr	May	Jun	Jul	Ago	Sep	Oct	Nov	Dic
2005-2006	5.71	.	5.57	.	5.89	.	6.22	.	5.91	5.95	5.39	5.45

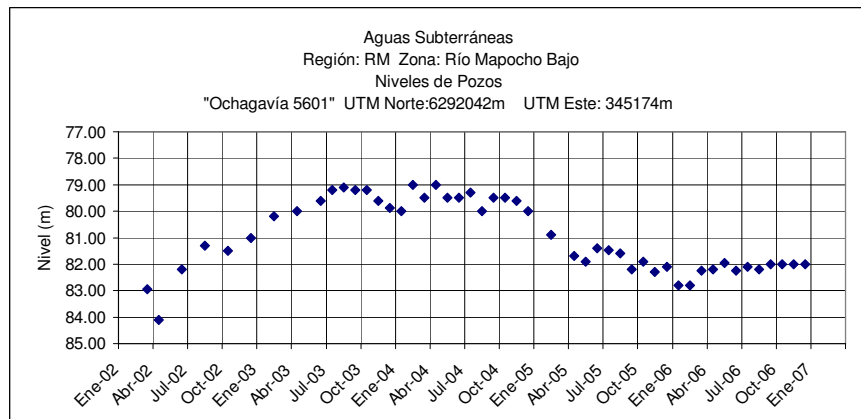


	Ene	Feb	Mar	Abr	May	Jun	Jul	Ago	Sep	Oct	Nov	Dic
2005-2006	6.61	.	6.32	.	6.42	.	6.37	.	6.48	6.35	6.48	6.40

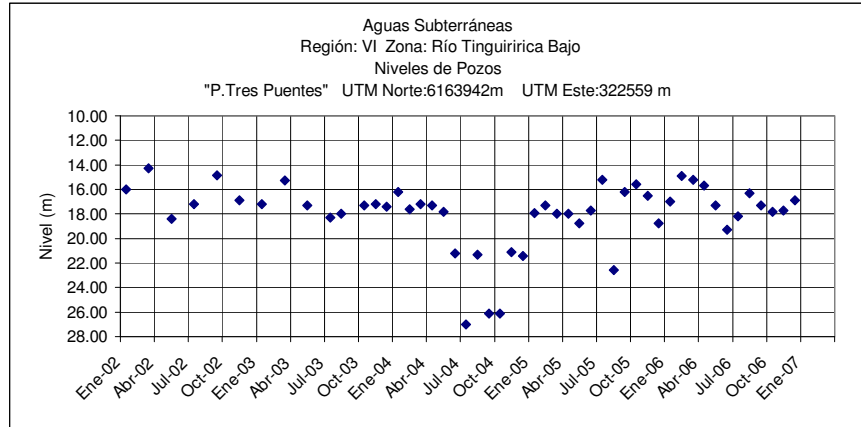


	Ene	Feb	Mar	Abr	May	Jun	Jul	Ago	Sep	Oct	Nov	Dic
2005-2006	1.90	2.00	1.70	1.75	1.75	2.05	2.20	2.00

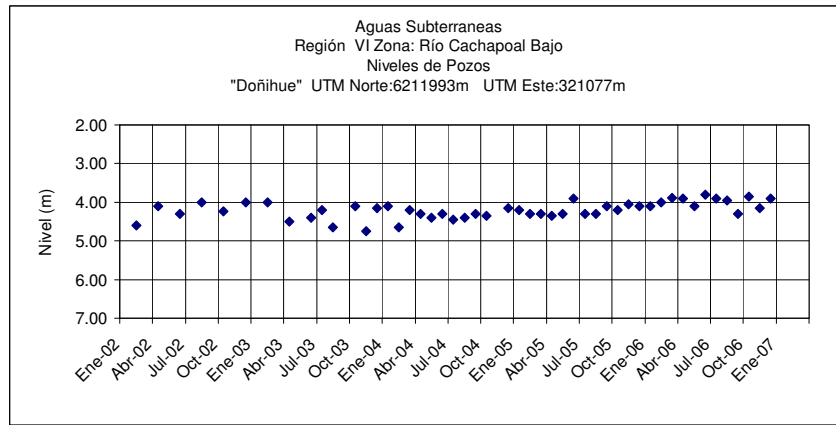
(.) Embancado



	Ene	Feb	Mar	Abr	May	Jun	Jul	Ago	Sep	Oct	Nov	Dic
2005-2006	82.80	82.80	82.25	82.20	81.95	82.25	82.10	82.20	82.00	82.00	82.00	82.00



	Ene	Feb	Mar	Abr	May	Jun	Jul	Ago	Sep	Oct	Nov	Dic
2005-2006	17.00	14.90	15.20	15.70	17.30	19.30	18.20	16.30	17.30	17.80	17.70	16.90



	Ene	Feb	Mar	Abr	May	Jun	Jul	Ago	Sep	Oct	Nov	Dic
2005-2006	4.10	4.00	3.88	3.90	4.10	3.80	3.90	3.95	4.30	3.85	4.15	3.90